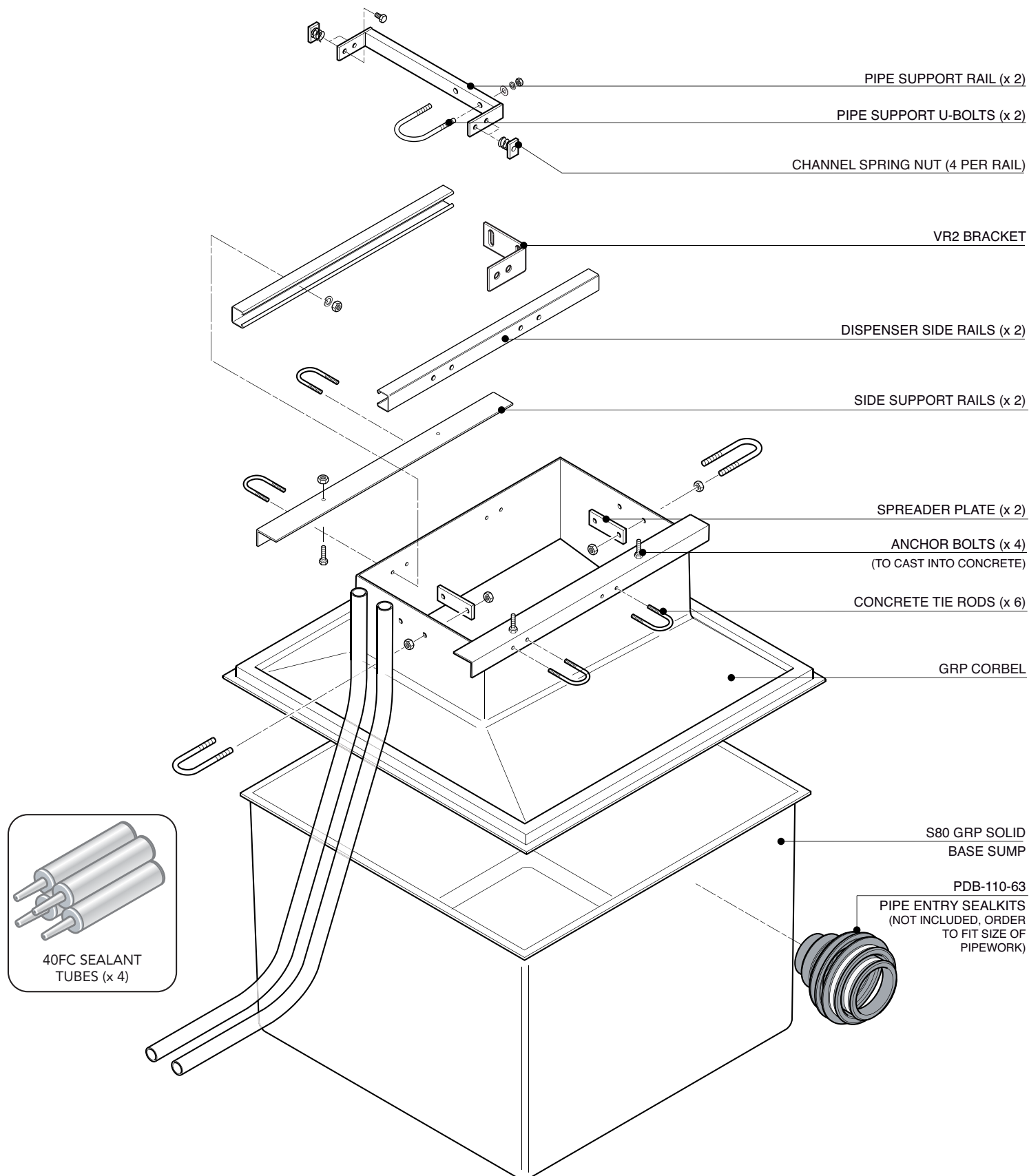


INSTALLATION INSTRUCTIONS

EL-W-H4000-S2-4-INST Dresser Wayne Sump Systems

FIBRELITE 
PART OF OPW A DOW COMPANY

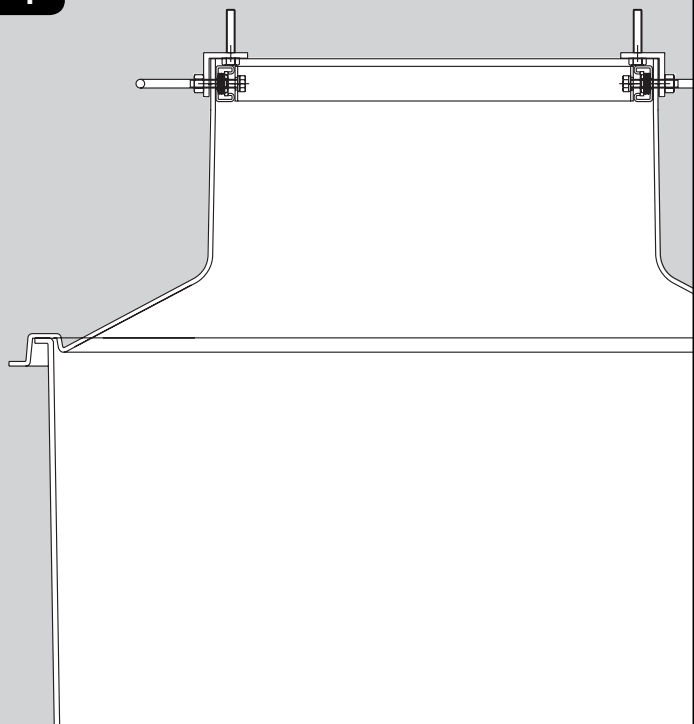


INSTALLATION INSTRUCTIONS

EL-W-H4000-S2-4-INST Dresser Wayne Sump Systems

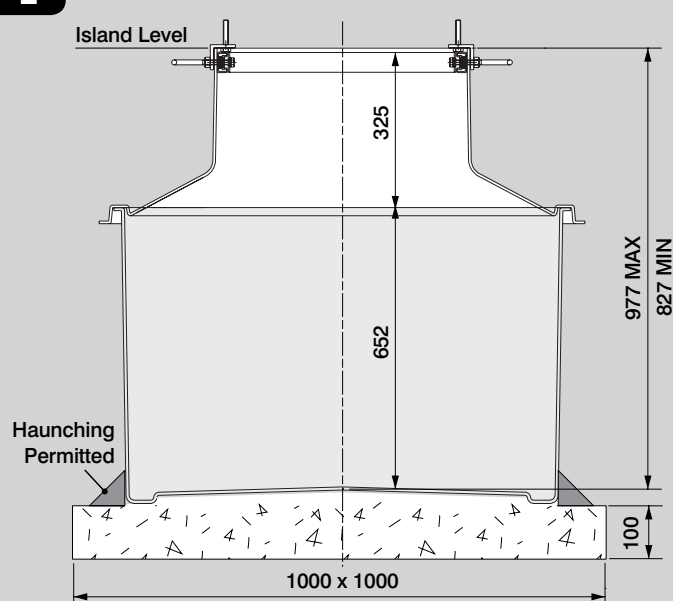
FIBRELITE 
PART OF OPW A DOVER COMPANY

1



Dispenser top has been supplied pre-assembled with metalwork.

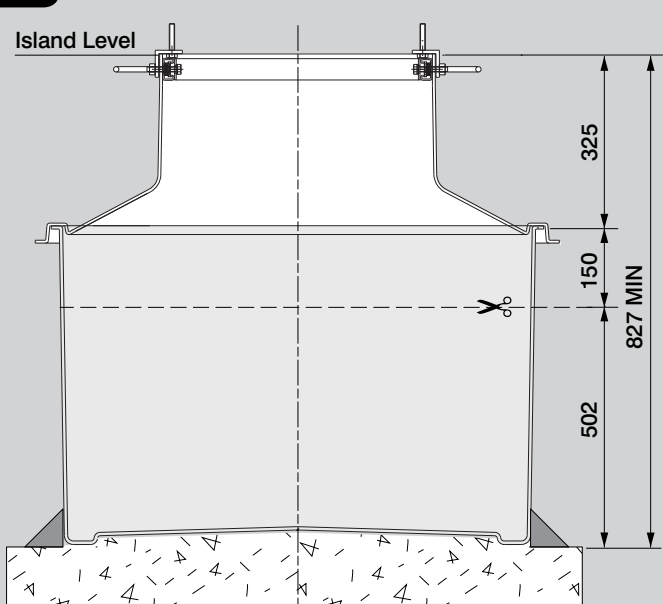
2



NB:- Sump should be embedded into the support base when installed.

Dry fit the corbel on top of the sump to check level and prepare a adequate support base.

3



If larger holes will be drilled please contact Fibrelite for maximum trim point.

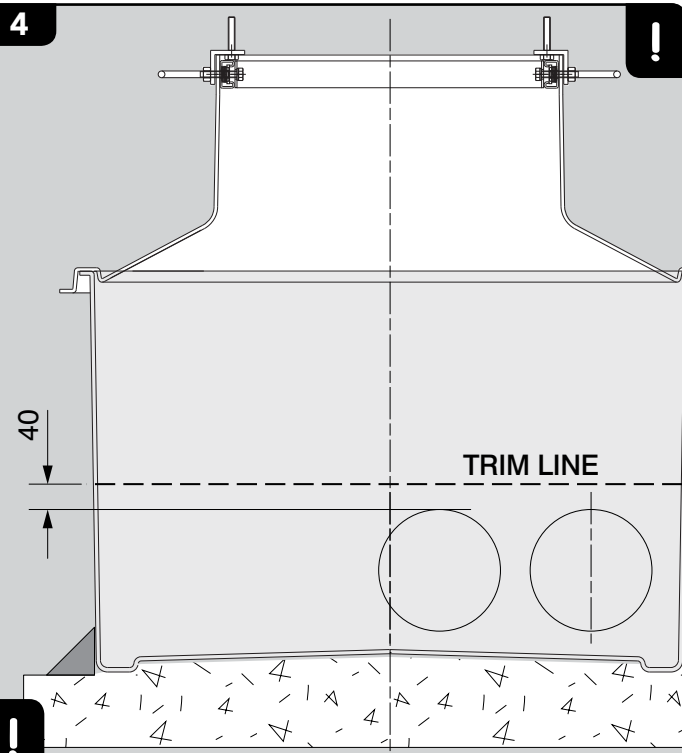
Sump can be trimmed to reduce the height of the system by up to 150mm, if 150mm holes will be drilled for pipe entry kits.

INSTALLATION INSTRUCTIONS

EL-W-H4000-S2-4-INST Dresser Wayne Sump Systems

FIBRELITE 
PART OF OPW A DOW COMPANY

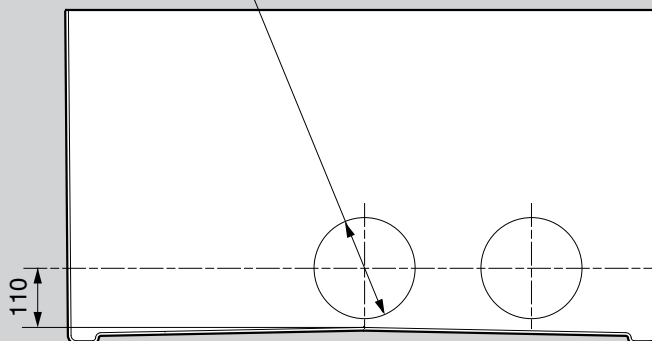
4



Before trimming the sump, ensure that all pipe seal kits are fitted and the position of the highest pipe seal kit flanges is at least 40 mm below the trim line.

5

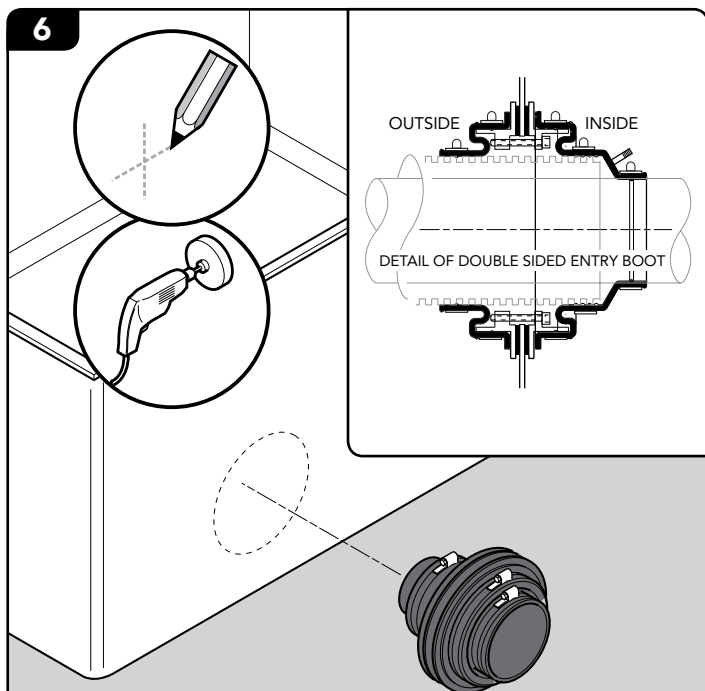
OD Flange Ring 190mm



NB:- Hole size drilled is Ø150mm. OD of flange is Ø190mm

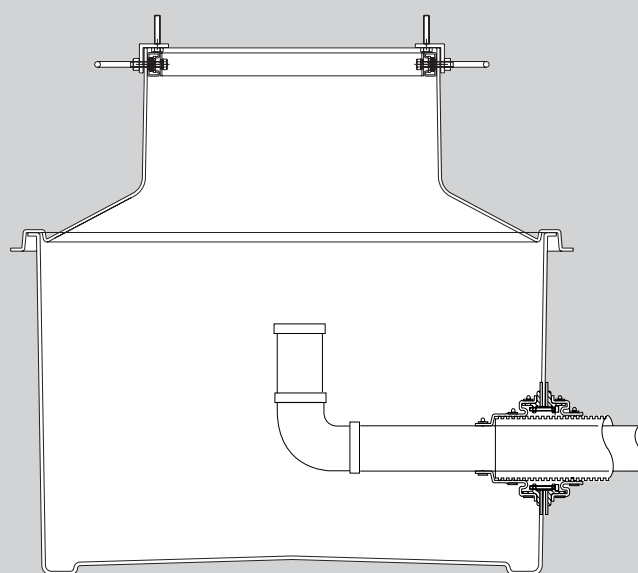
If sump is trimmed to minimum height centre point of hole is 110mm from base internally.

6



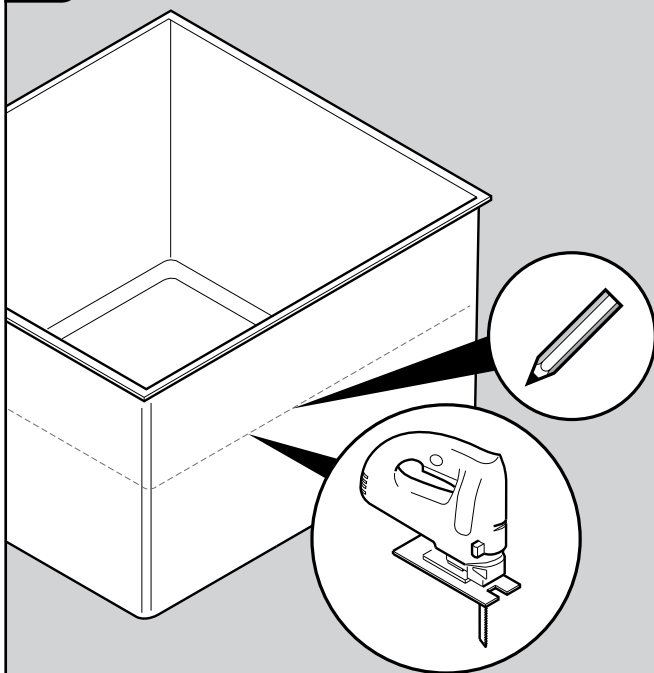
For PSB 50 to 110, PSBD 50 to 110 and PBD pipe entry kit models a 150mm hole should be drilled. Mark up hole positions as illustrated.

7



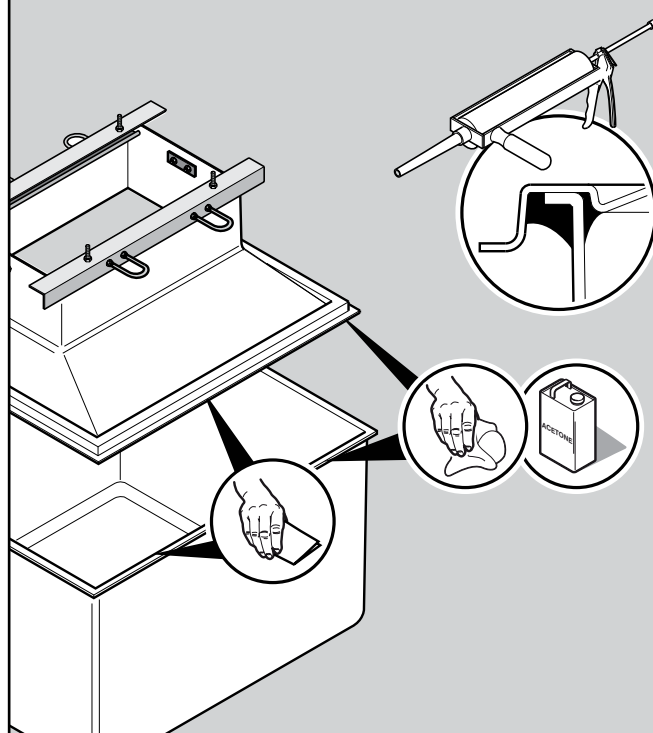
Run pipework through side wall and connect to upward riser. Cap off pipework to allow vacuum testing in stage 12.

8



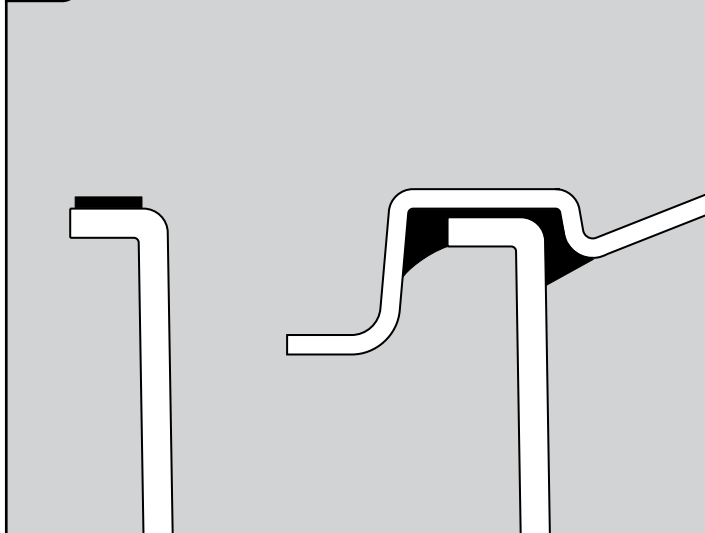
Mark trim point around the sump. Check position of pipe entry sealkits before trimming with a jig saw. Refer to stages 4 and 5 for pipework positions with and without trimming.

9



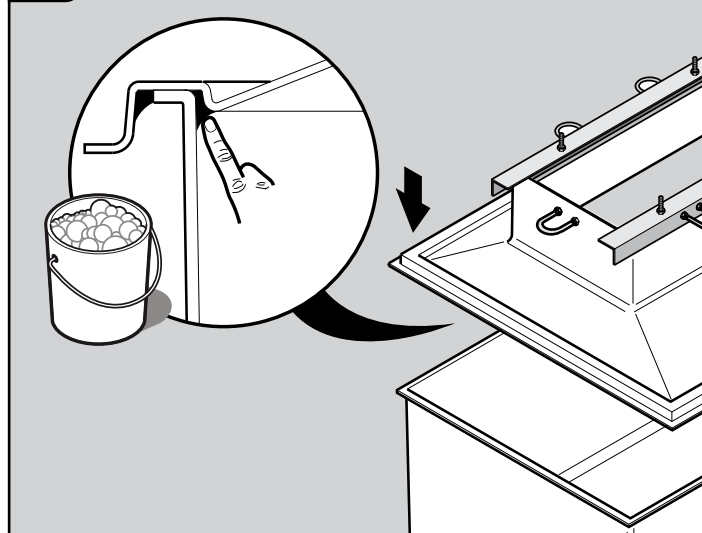
Abrade internal groove of corbel and top edge of the sump (inside & outside) with sandpaper. Degrease with acetone.

10



Apply a bead of sealant to the top of the sump flange. If this has been removed during trimming, apply sealant inside the groove of the corbel. Position the corbel onto the sump and push down firmly.

11



Apply sealant to BOTH the internal and external joint between the sump and corbel. Smooth off and press into the joint with soapy water to remove trapped air. Allow 12 hours for the sealant to set.

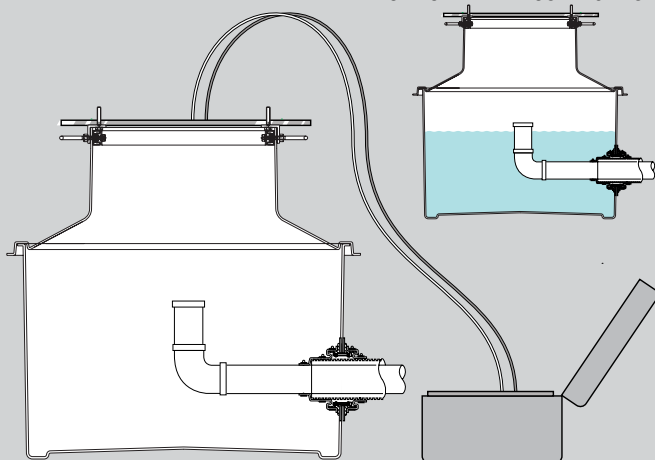
INSTALLATION INSTRUCTIONS

EL-W-H4000-S2-4-INST Dresser Wayne Sump Systems

FIBRELITE 
PART OF OPW A DOVER COMPANY

12

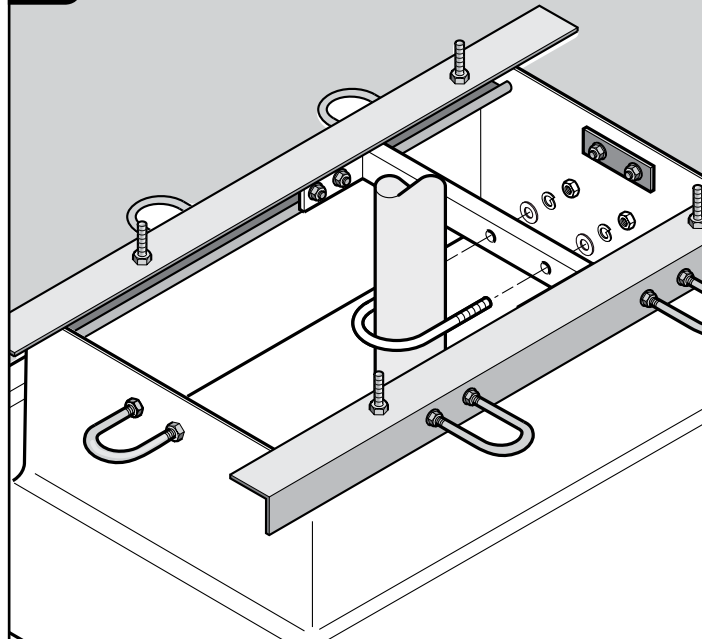
OPTIONAL HYDROSTATIC TEST



NB:- Vacuum test at 0.6m depth setting only.

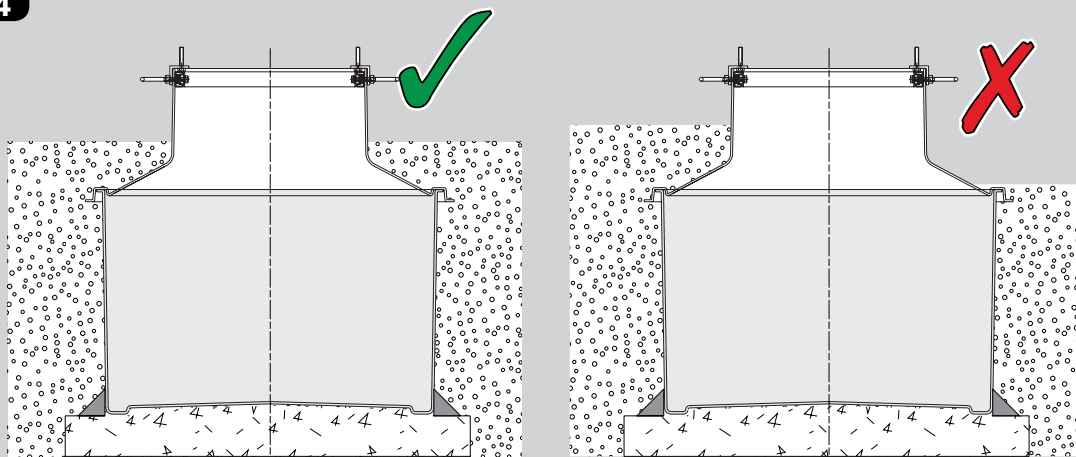
Optional vacuum water or hydrostatic test.
Ensure pipework is capped off below the upward riser.
Tighten clips on pipe entry sealkits against the pipe.
Tighten nuts on upper support rail metalwork.

13



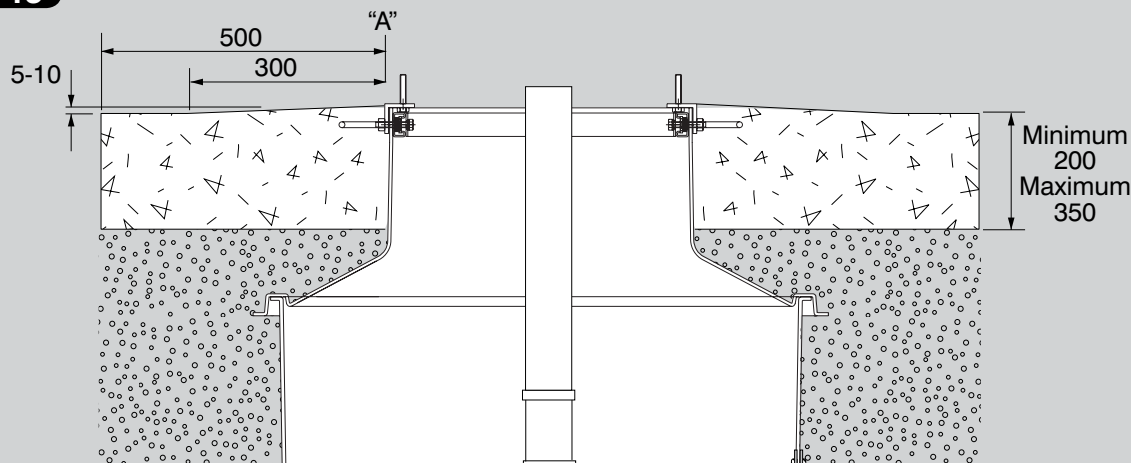
Complete pipework and secure to pipe support rails with pipe support U-bolts.

14



Backfill around the sump equally in levels to prevent uneven load against the sump wall.

15



Concrete island depth fixed as per architect drawing.

Allow concrete to cure

VERY IMPORTANT
OUTER EDGE "A" OF FRAME SET 5-10mm ABOVE GENERAL GRADE AREA WITH CONCRETE RAMPED AWAY OVER 300mm

