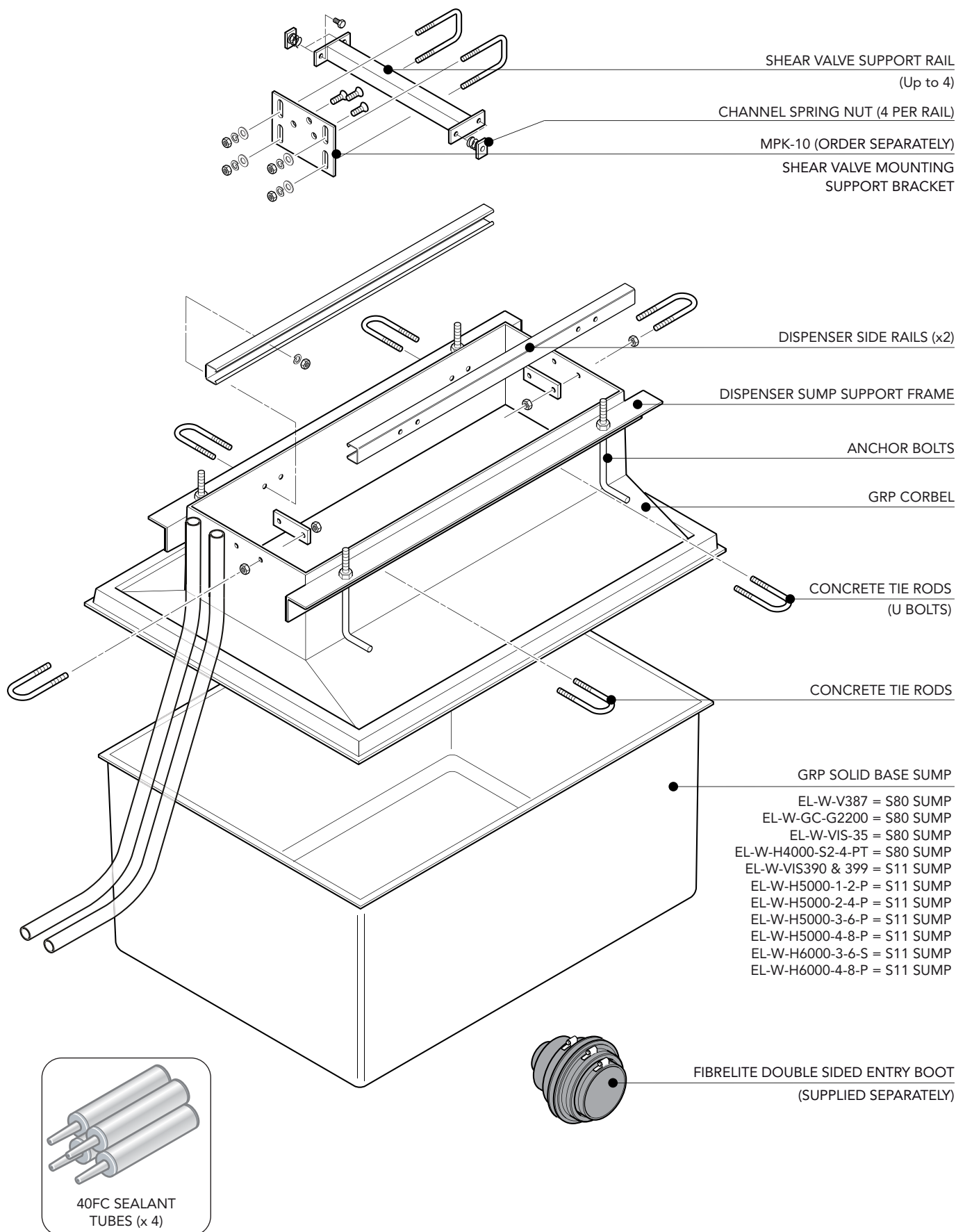


# INSTALLATION INSTRUCTIONS

## Dresser Wayne Dispenser Sumps - Generic

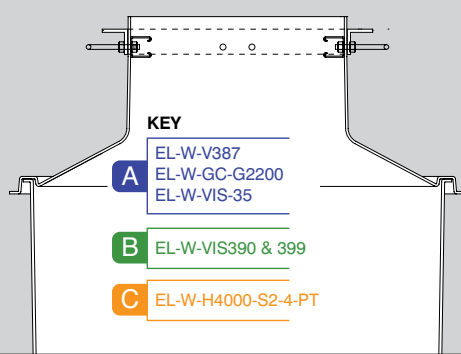




# INSTALLATION INSTRUCTIONS

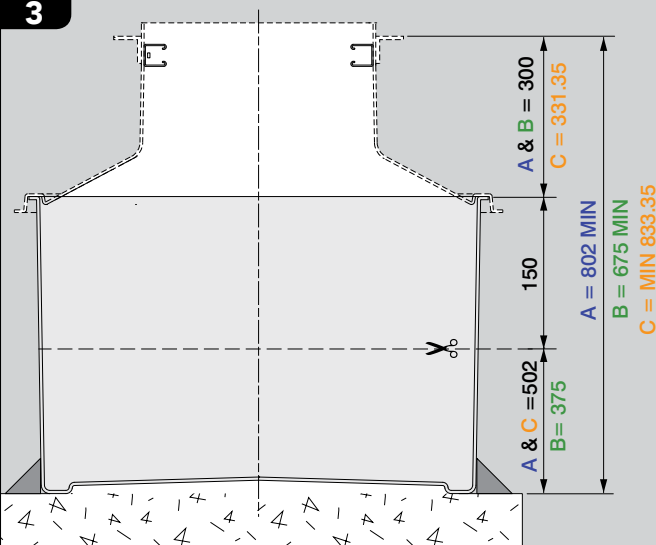
## Dresser Wayne Dispenser Sumps - Generic

1



Dispenser top has been supplied pre-assembled with metalwork.

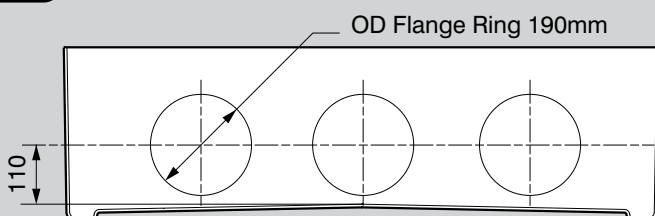
3



If larger holes will be drilled please contact Fibrelite for maximum trim point.

Sump can be trimmed to reduce the height of the system by up to 150mm, if 150mm holes will be drilled for pipe entry kits.

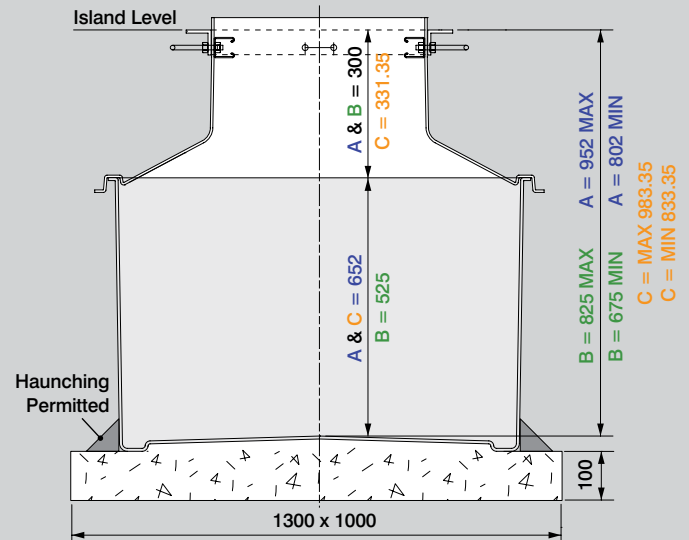
5



NB:- Hole size drilled is Ø150mm. OD of flange is Ø190mm

If sump is trimmed to minimum height centre point of hole is 110mm from base internally.

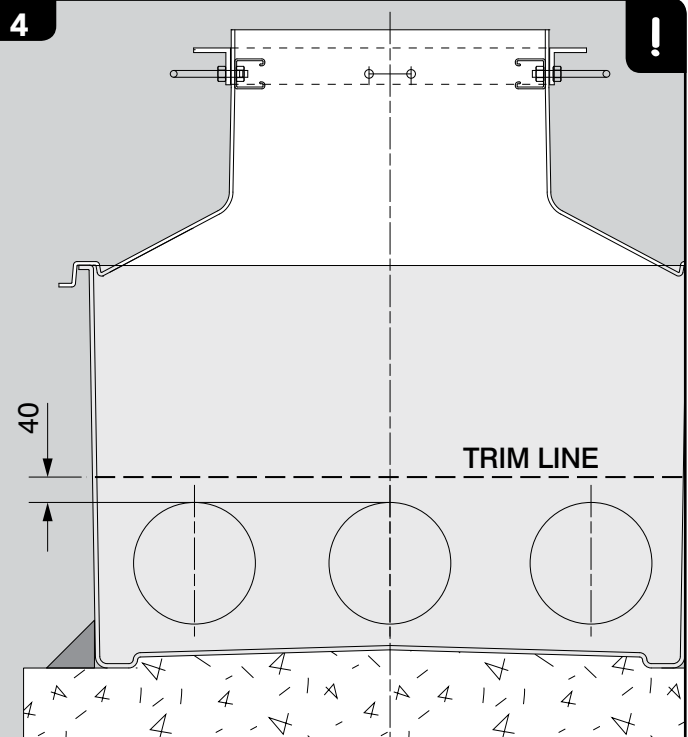
2



NB:- Sump should be embedded into the support base when installed.

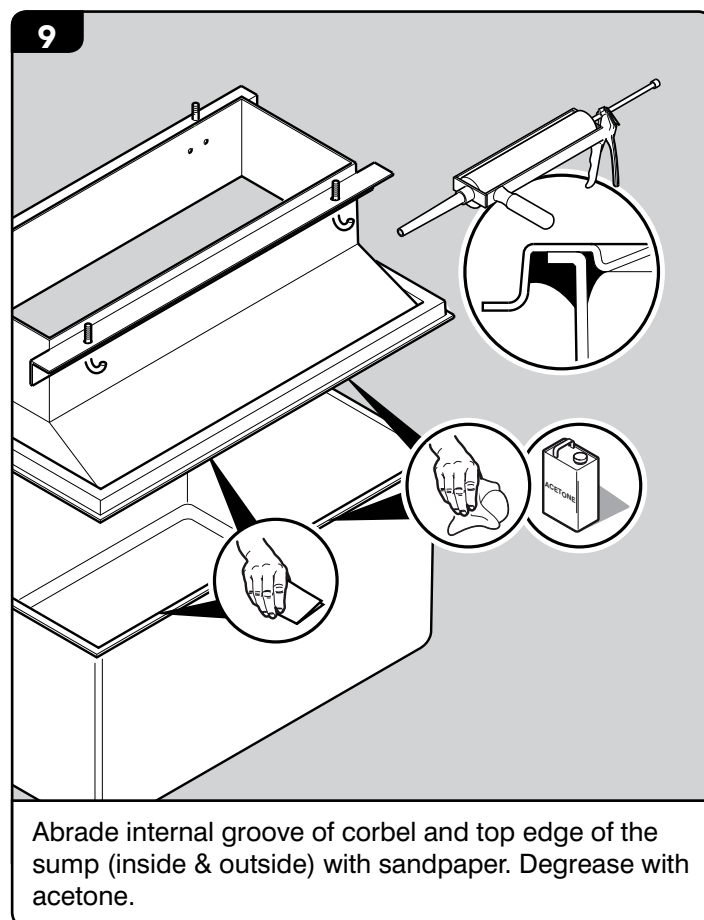
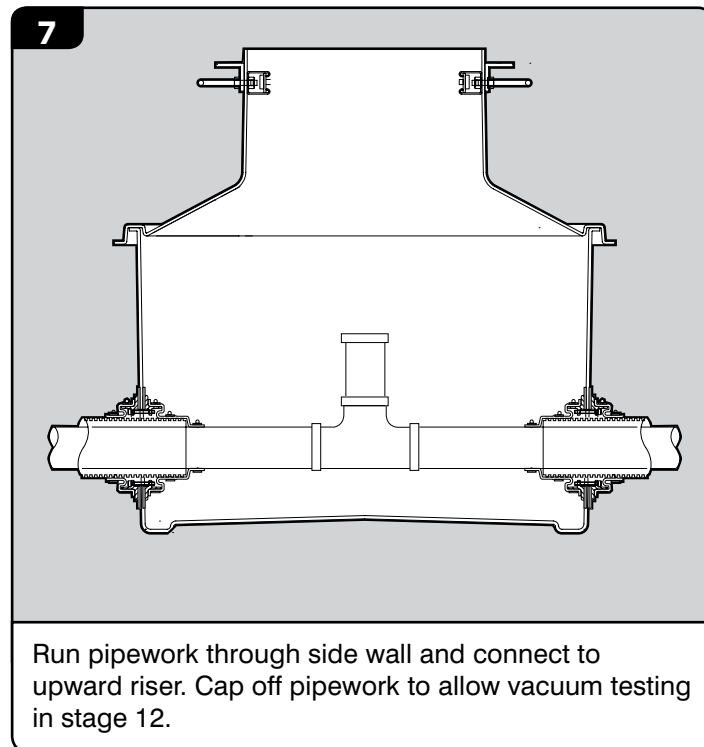
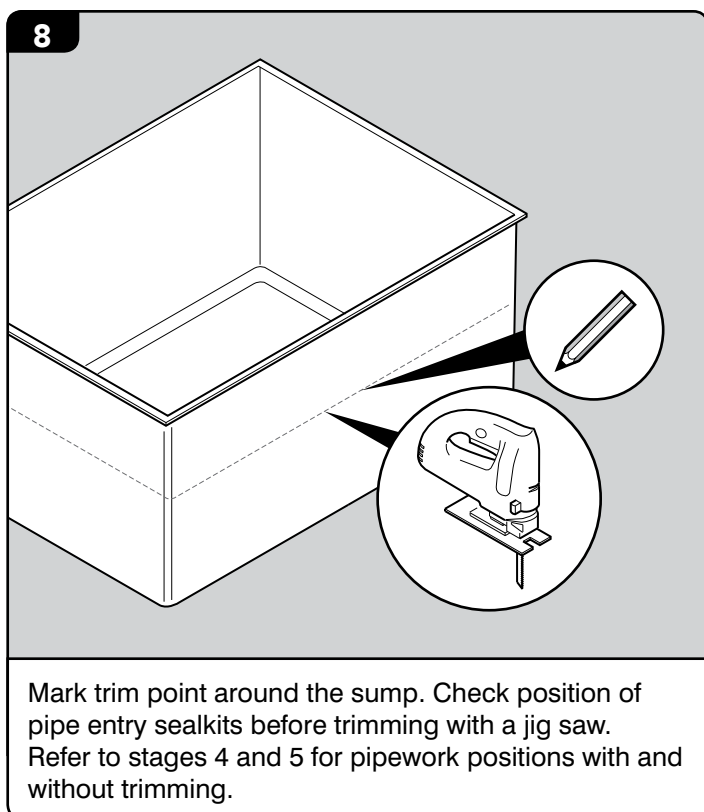
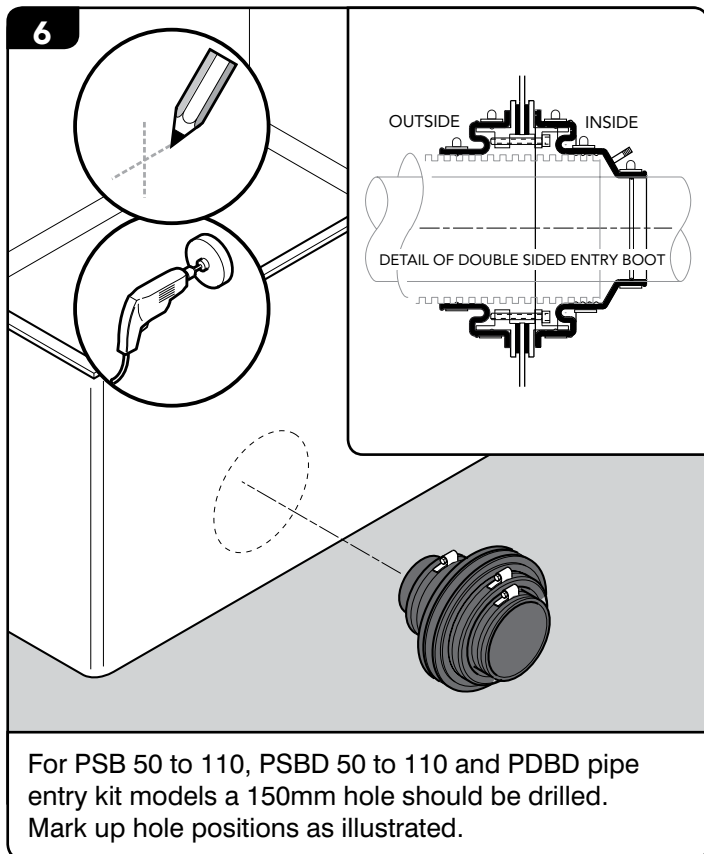
Dry fit the corbel on top of the sump to check level and prepare a adequate support base.

4



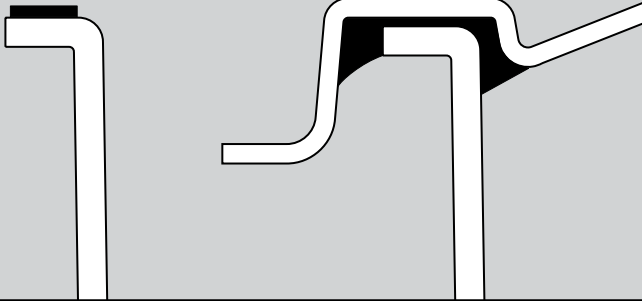
Before trimming the sump, ensure that all pipe seal kits are fitted and the position of the highest pipe seal kit flanges is at least 40 mm below the trim line.





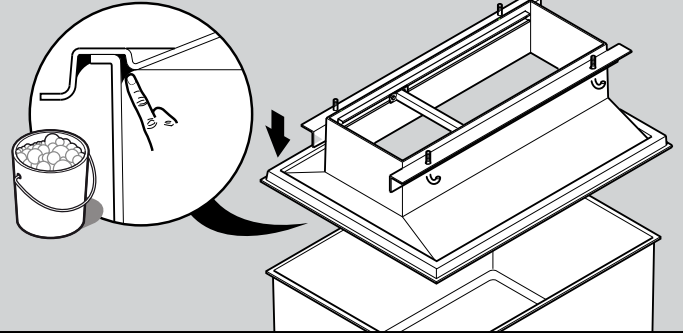


10



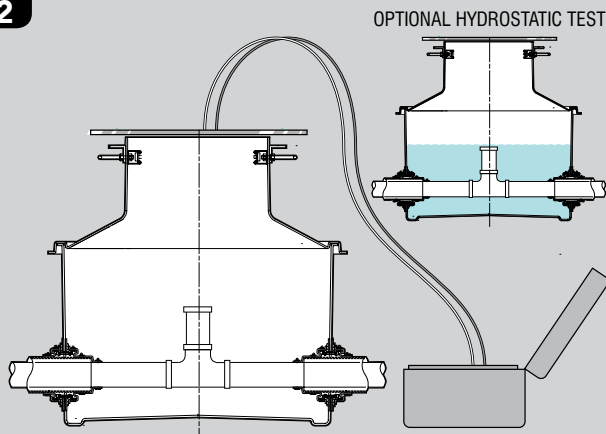
Apply a bead of sealant to the top of the sump flange. If this has been removed during trimming, apply sealant inside the groove of the corbel. Position the corbel onto the sump and push down firmly.

11



Apply sealant to BOTH the internal and external joint between the sump and corbel. Smooth off and press into the joint with soapy water to remove trapped air. Allow 12 hours for the sealant to set.

12

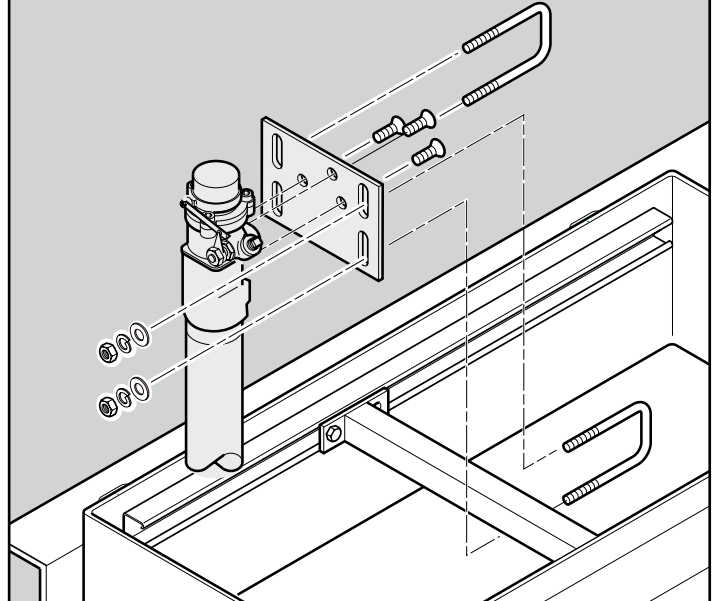


OPTIONAL HYDROSTATIC TEST

NB:- Vacuum test at 0.6m depth setting only.

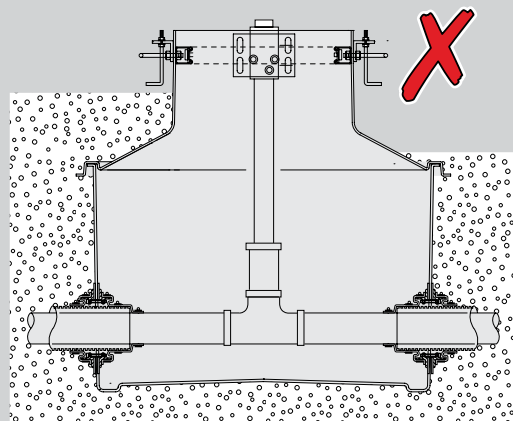
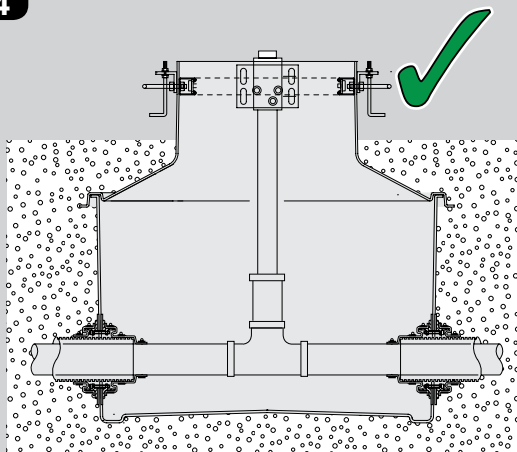
Optional vacuum water or hydrostatic test. Ensure pipework is capped off below the upward riser. Tighten clips on pipe entry sealkits against the pipe. Tighten nuts on upper support frame metalwork.

13



Complete pipework and secure to shear valve rails or pipes with the MPK-10 or MPK-10-S-2 mounting kits respectively.

14



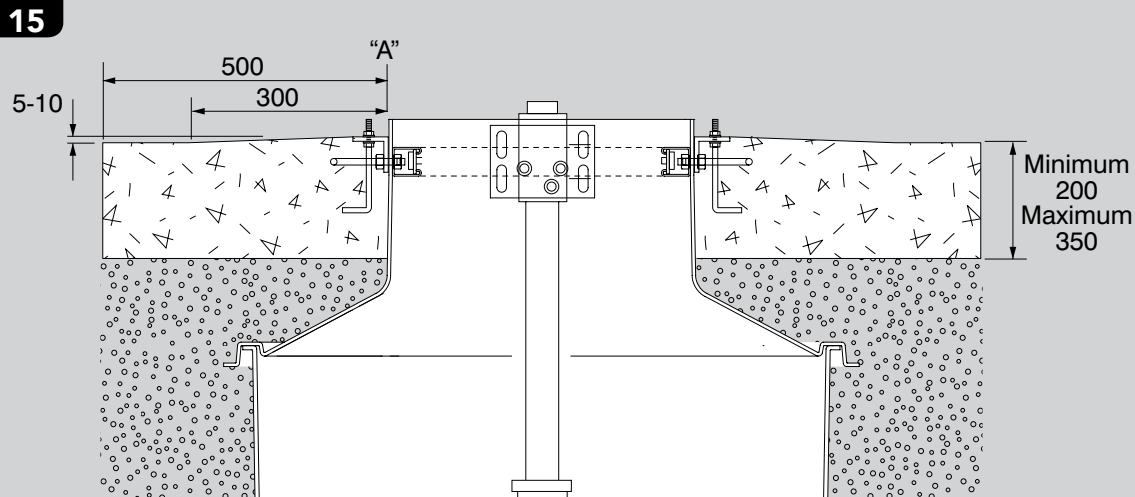
Backfill around the sump equally in levels to prevent uneven load against the sump wall.



# INSTALLATION INSTRUCTIONS

## Dresser Wayne Dispenser Sumps - Generic

**FIBRELITE**   
PART OF OPW A DOVER COMPANY



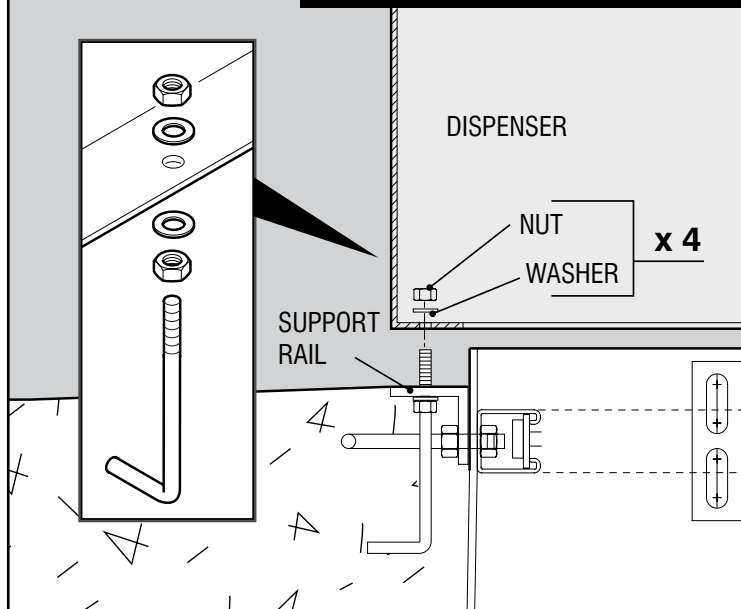
Concrete island depth fixed as per architect drawing.

Allow concrete to cure

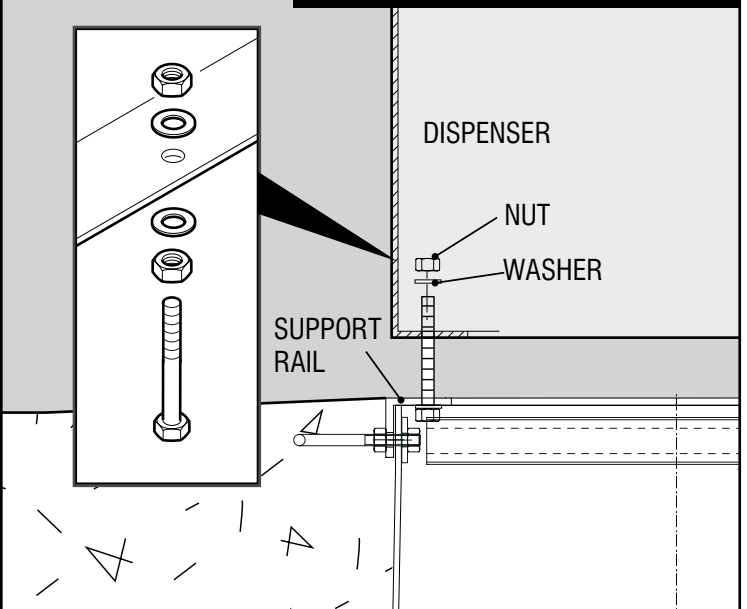
**VERY IMPORTANT**  
OUTER EDGE "A" OF FRAME SET 5-10mm ABOVE GENERAL GRADE AREA WITH CONCRETE RAMPED AWAY OVER 300mm

**16**

Dispenser Metalwork Type:  
(1 of 2)



Dispenser Metalwork Type:  
(2 of 2)



Remove upper nut & washer on the 4 anchor bolts. Install & connect the dispenser to the sump dispenser support rails & anchor bolt. Fit & tighten nut & washer.