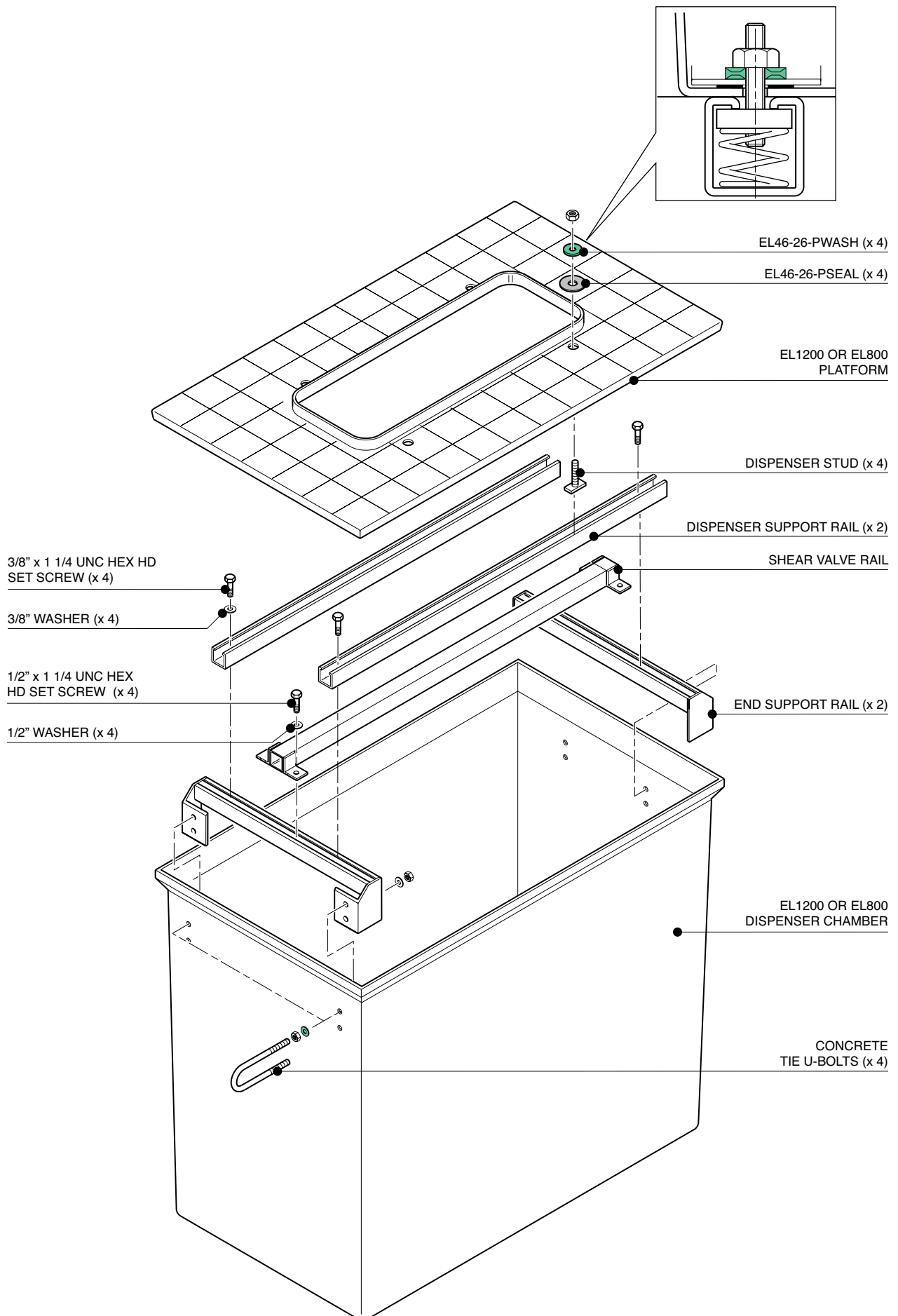


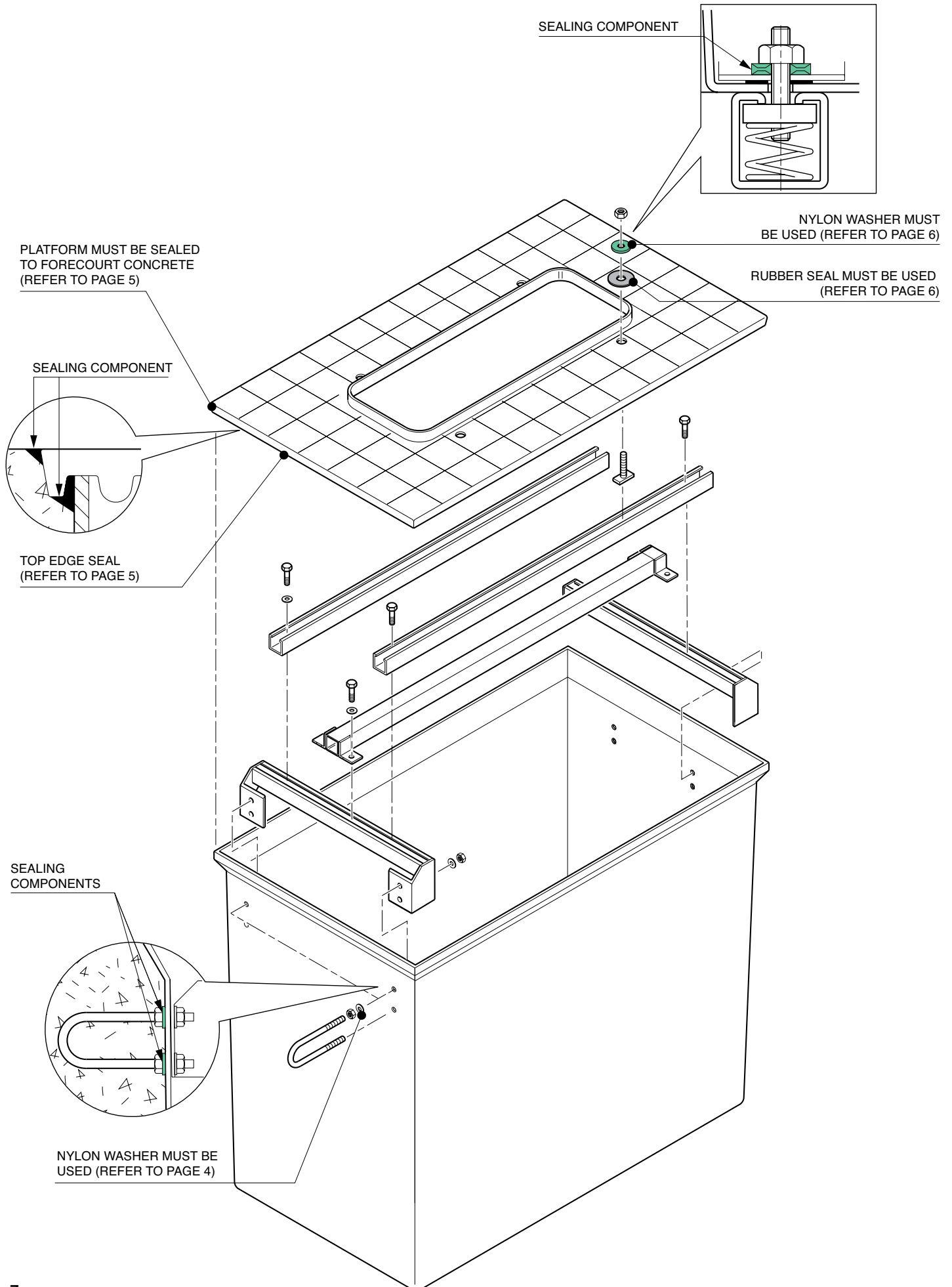
# INSTALLATION INSTRUCTIONS

## EL1200 and EL800 Dispenser Sump Systems



# INSTALLATION INSTRUCTIONS

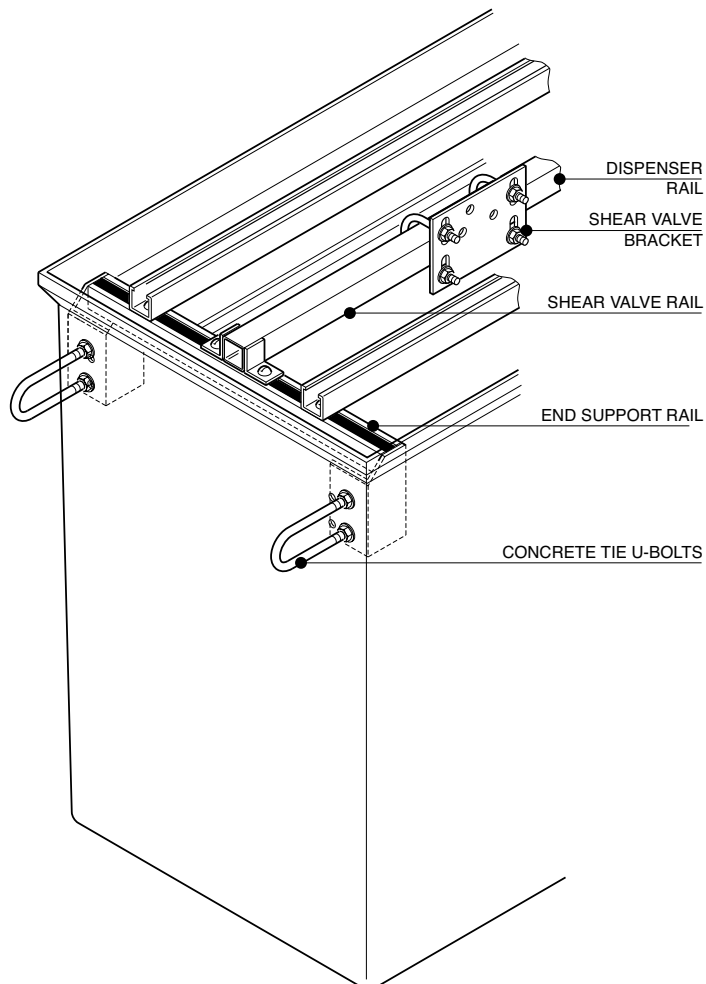
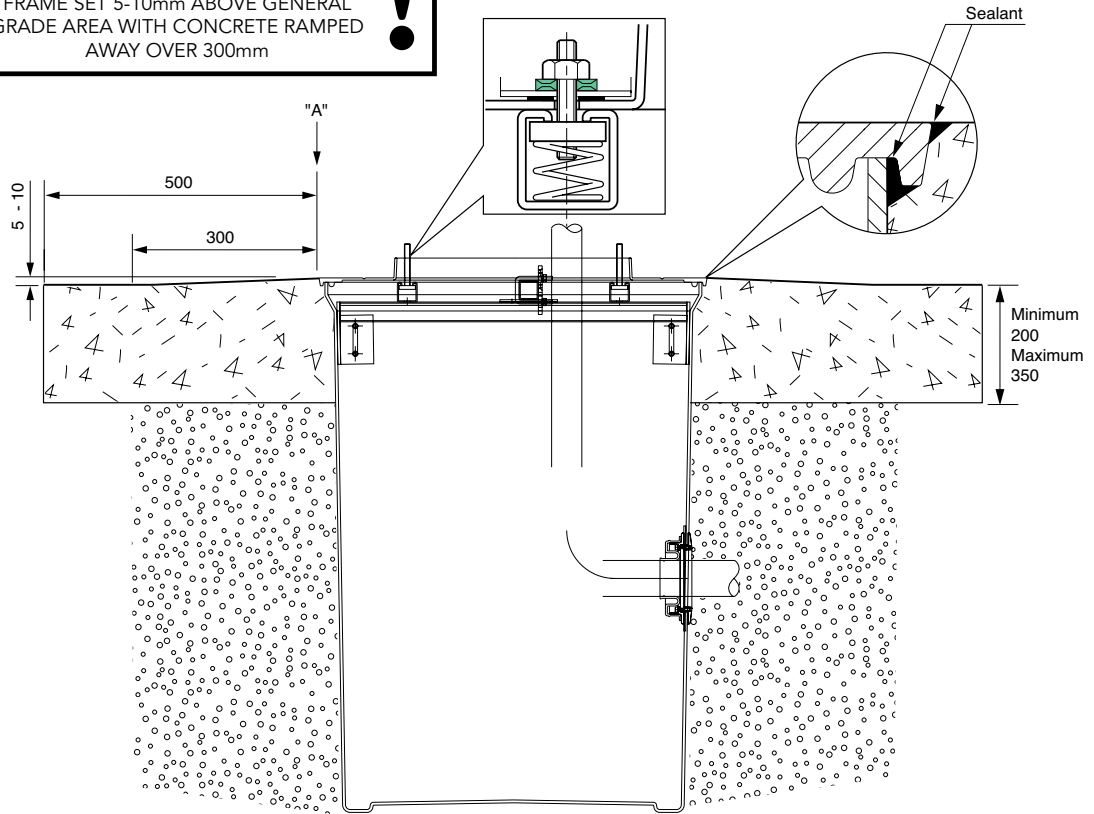
## EL1200 and EL800 Dispenser Sump Systems



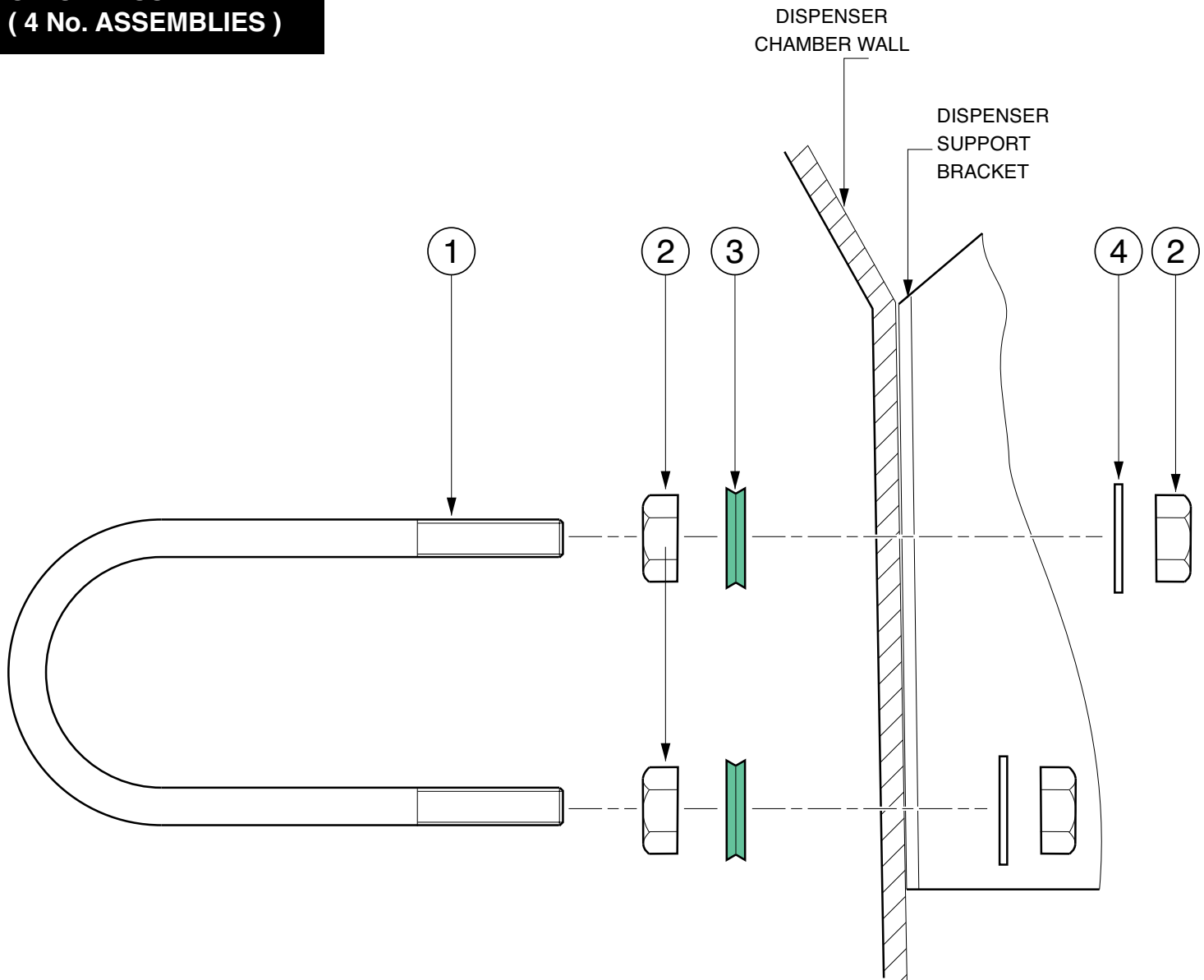
# INSTALLATION INSTRUCTIONS

## EL1200 and EL800 Dispenser Sump Systems

**VERY IMPORTANT**  
VERY IMPORTANT OUTER EDGE "A" OF  
FRAME SET 5-10mm ABOVE GENERAL  
GRADE AREA WITH CONCRETE RAMPED  
AWAY OVER 300mm



**U-BOLT ASSEMBLY  
 ( 4 No. ASSEMBLIES )**



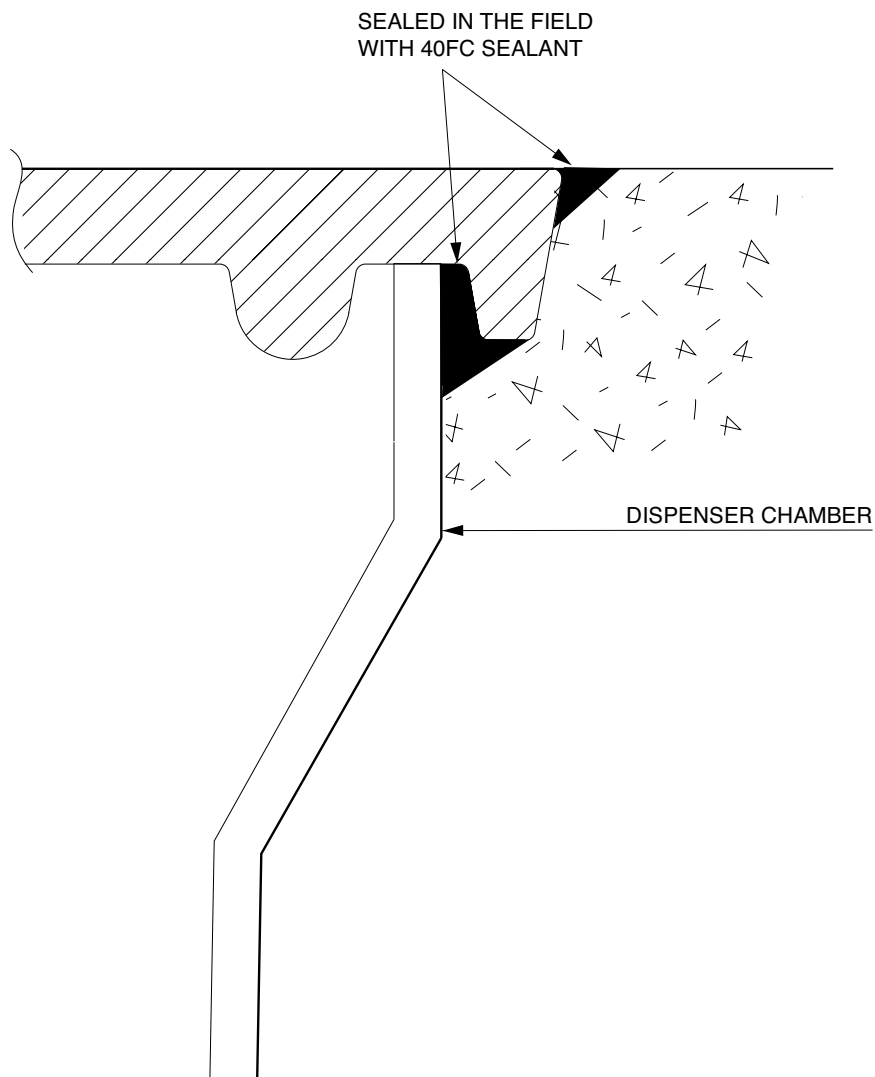
1 No. U-BOLT COMPRISES OF:

|      |                    |     |                      |
|------|--------------------|-----|----------------------|
| 4    | M10 WASHER         | 2   | <sup>316</sup> ST/ST |
| 3    | NYLON WASHER (203) | 2   | NYLON                |
| 2    | HEAXAGON NUT M10   | 4   | <sup>316</sup> ST/ST |
| 1    | U-BOLT             | 1   | <sup>316</sup> ST/ST |
| ITEM | DESCRIPTION        | QTY | MAT'L                |

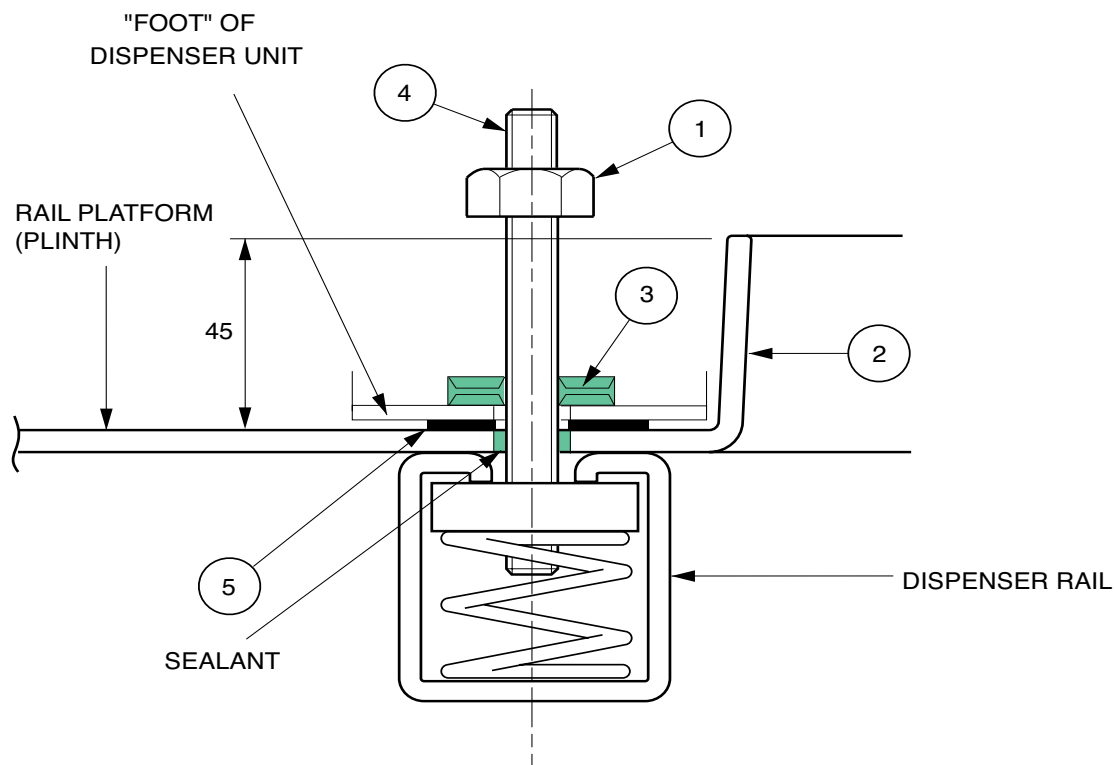
**PLATFORM ASSEMBLY**  
**(1 No. ASSEMBLY)**

**NOTES:**

THE PLATFORM (PLINTH) IS TO BE SEALED, IN THE FIELD WITH 40FC SEALANT ON THE TOP AND EXTERNAL BEAD.



**SUPPORT BRACKET ASSEMBLY AND WATER GUARD ARRANGEMENT (4 No. ASSEMBLIES)**



|      |                |   |     |             |
|------|----------------|---|-----|-------------|
| 5    | EL46-26-RSEAL  | 25 O/D x 12 I/D X 3 RUBBER SEAL         | 4   | NBR         |
| 4    | EL46-26-PSCREW | M12 x 65 THREADED STUD                  | 4   | A2<br>ST/ST |
| 3    | EL46-26-PSEAL  | M12 UNC NYLON SEALING WASHER            | 4   | NYLON       |
| 2    | EL46-26-TOP    | PLATFORM WITH INTERGRATED WATER BARRIER | 1   | FRP         |
| 1    | EL46-26-PNUT   | M12 UNC NUT                             | 4   | A2<br>ST/ST |
| ITEM | PART CODE      | DESCRIPTION                             | QTY | MAT'L       |

**NOTE:**

THE PLATFORM WATER BARRIER IS FACTORY FITTED TO THE PLATFORM.

PLEASE ENSURE IT IS FREE FROM DAMAGE BEFORE FITTING.

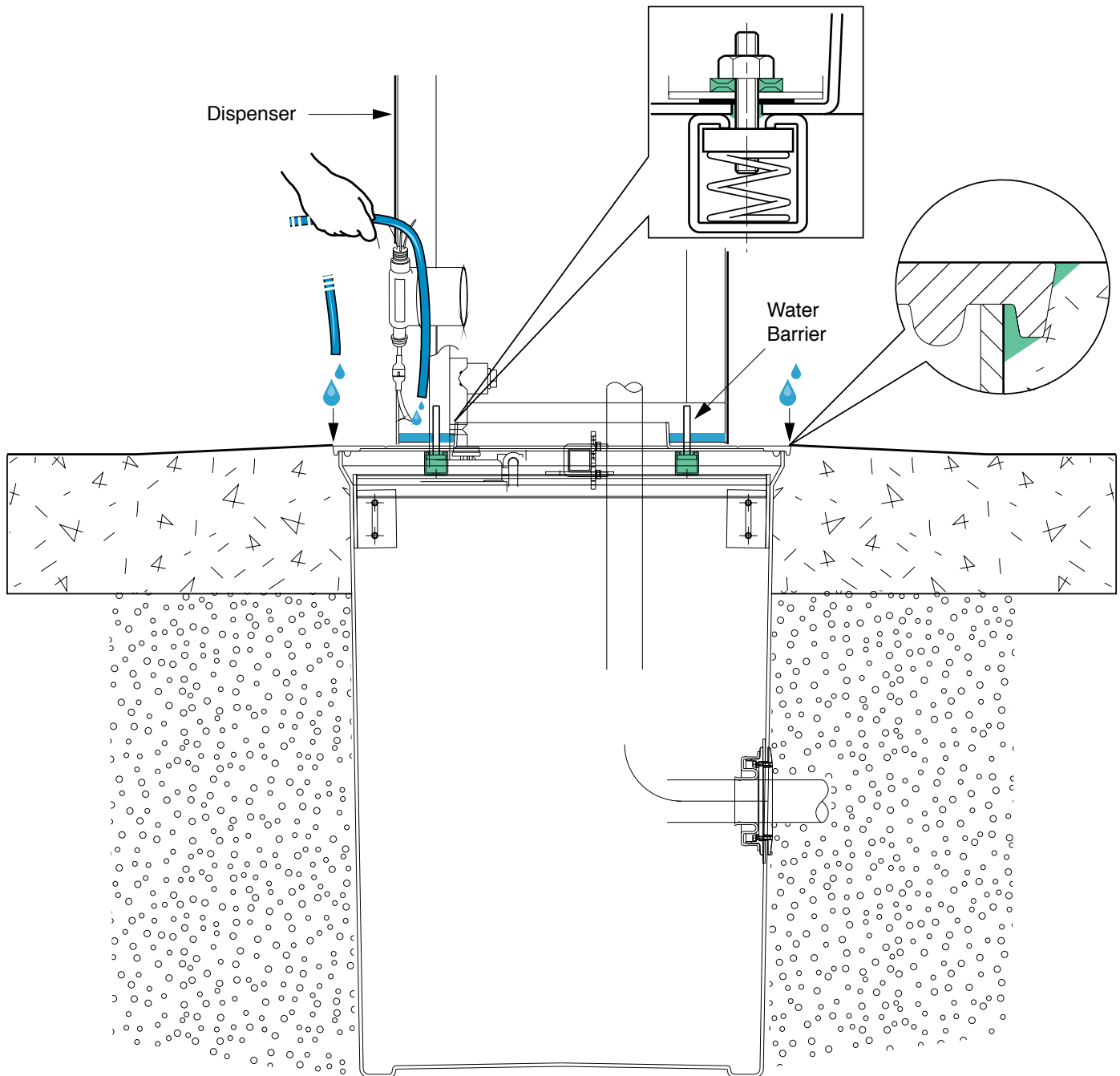
**NB:**

SEAL THE RUBBER SEAL (ITEM 5) TO THE PLATFORM AND UNDERSIDE OF THE DISPENSER FOOT WITH SEALANT. ALSO FILL THE MOUNTING BOLT HOLE IN THE PLATFORM WITH SEALANT.

THE DISPENSER NUTS (ITEM 1) MUST BE TIGHTENED TO ACHIEVE A SEAL. THE NUT SHOULD BE TIGHTENED UNTIL THE OUTER RETAINING RIM OF THE RING OF THE NYLON WASHER (ITEM 3) IS DISTORTED AND HAS ENGAGED AROUND THE HEAD OF THE NUT.

**IN FIELD WATER TEST**

THE INSTALLATION MUST BE SITE WATER TESTED. FLOOD THE AREA AROUND THE DISPENSER PLATFORM ENSURING THAT THE PLATFORM WATER BARRIER IS NOT BREACHED. OBSERVE FOR WATER INTRUSION AT ALL JOINTS. IF LEAKS ARE DETECTED RE-SEAL AND RE-TIGHTEN AS APPROPRIATE AND RE-TEST.



 WATER INTRUSION POINT