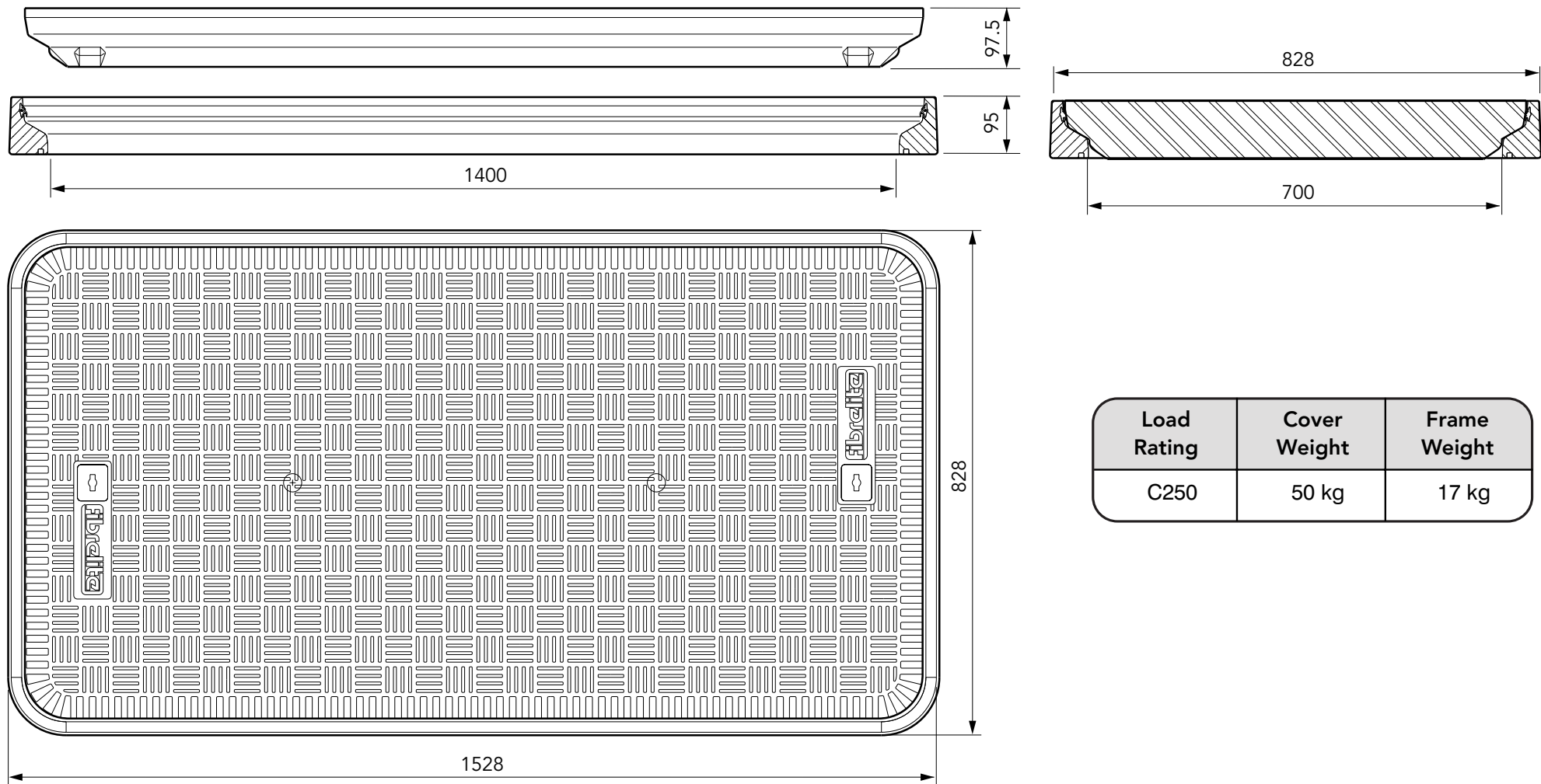




1400mm x 700mm flat sealed composite cover with aluminium frame. Temperature and chemical resistant. Designed for steam applications.

For reference purposes only. This drawing is not a specification. Order against product code only. To enable continuous improvement of our products, the designs and specifications are subject to change without notice.





Load Rating	Cover Weight	Frame Weight
C250	50 kg	17 kg

1400mm x 700mm flat sealed composite cover with aluminium frame. Temperature and chemical resistant. Designed for steam applications.

For reference purposes only. This drawing is not a specification. Order against product code only. To enable continuous improvement of our products, the designs and specifications are subject to change without notice.



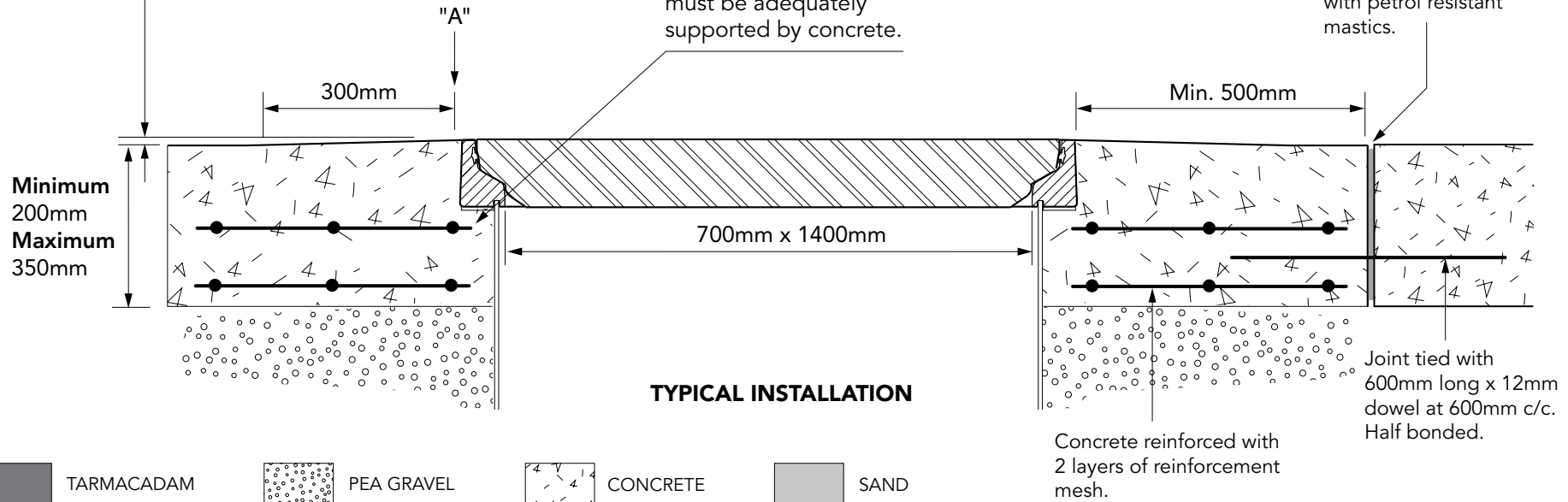
**CONCRETE**

**VERY IMPORTANT**

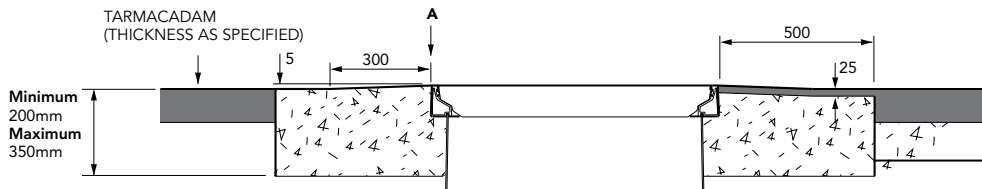
OUTER EDGE "A" OF FRAME SET 5MM ABOVE GENERAL FORECOURT AREA WITH CONCRETE RAMPED AWAY OVER 300MM

**VERY IMPORTANT**

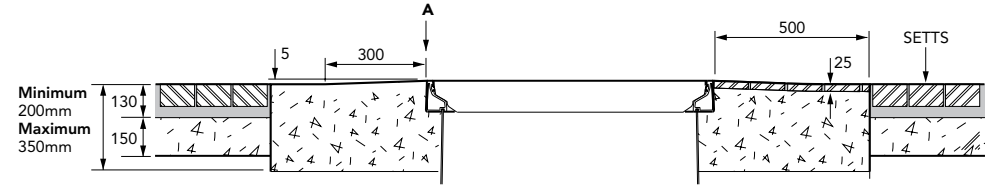
The underside of the frame must be adequately supported by concrete.



**TARMACADAM**



**SETTS**



1400mm x 700mm flat sealed composite cover with aluminium frame. Temperature and chemical resistant. Designed for steam applications.

For reference purposes only. This drawing is not a specification. Order against product code only. To enable continuous improvement of our products, the designs and specifications are subject to change without notice.

