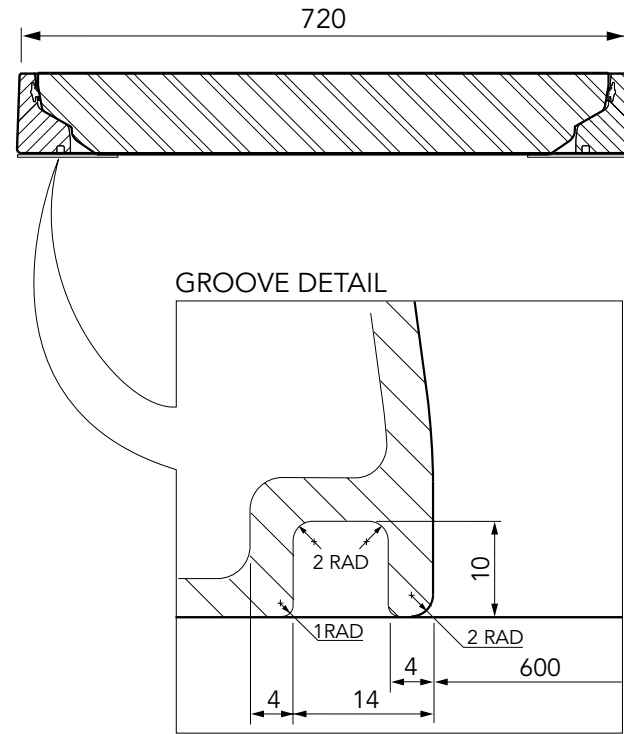
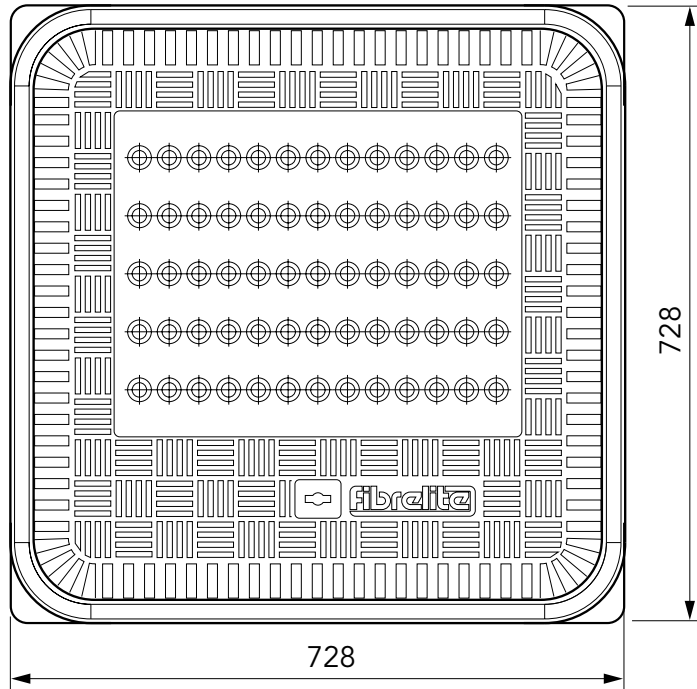
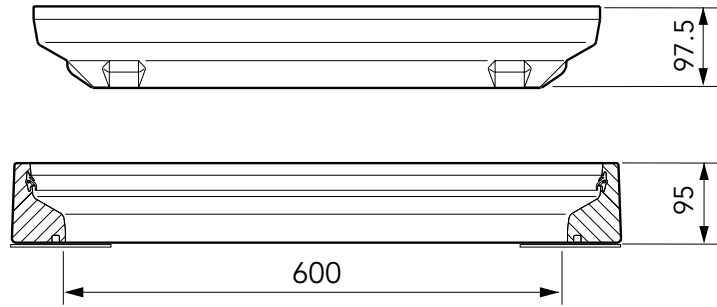




600mm x 600mm square, vented composite cover with an aluminium frame. Temperature & chemical resistant. Designed for steam applications.

For reference purposes only. This drawing is not a specification. Order against product code only. To enable continuous improvement of our products, the designs and specifications are subject to change without notice.

FIBRELITE 
PART OF OPW A DOVER COMPANY



600mm x 600mm square, vented composite cover with an aluminium frame. Temperature & chemical resistant. Designed for steam applications.

For reference purposes only. This drawing is not a specification. Order against product code only. To enable continuous improvement of our products, the designs and specifications are subject to change without notice.



CONCRETE

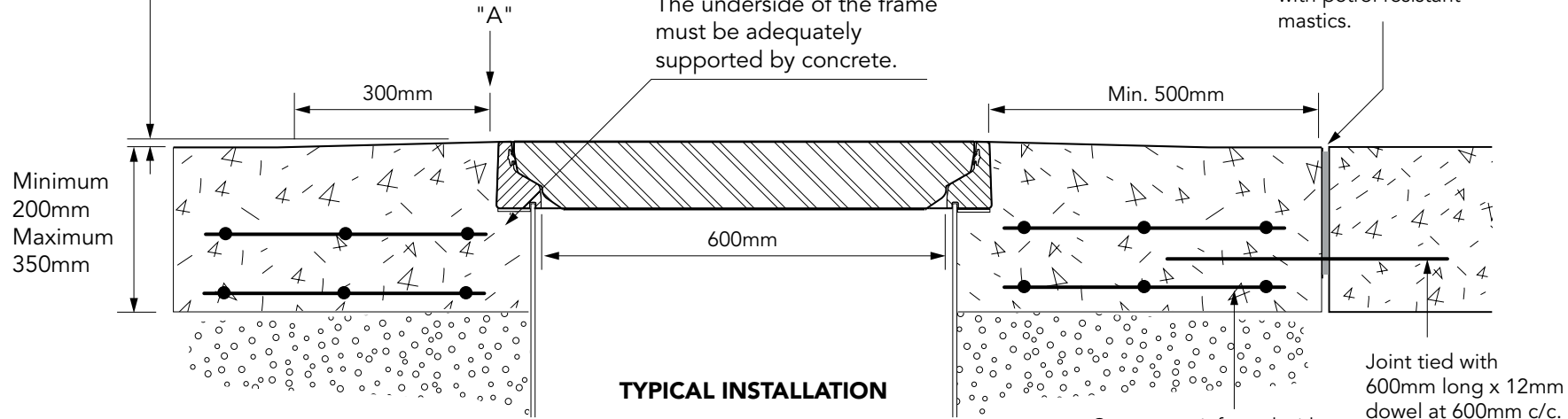
VERY IMPORTANT

OUTER EDGE 'A' OF FRAME SET 5MM ABOVE GENERAL FORECOURT AREA WITH CONCRETE RAMPED AWAY OVER 300MM

VERY IMPORTANT

The underside of the frame must be adequately supported by concrete.

Expansion joint filled with petrol resistant mastics.



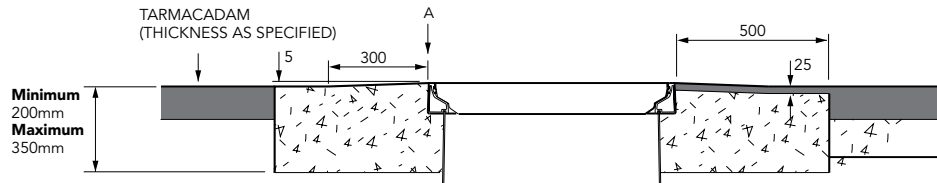
TYPICAL INSTALLATION

Concrete reinforced with 2 layers of reinforcement mesh.

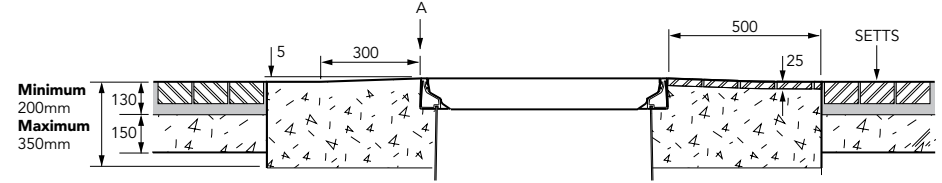
Joint tied with 600mm long x 12mm dowel at 600mm c/c. Half bonded.



TARMACADAM



SETTS



600mm x 600mm square, vented composite cover with an aluminium frame. Temperature & chemical resistant. Designed for steam applications.

For reference purposes only. This drawing is not a specification. Order against product code only. To enable continuous improvement of our products, the designs and specifications are subject to change without notice.

