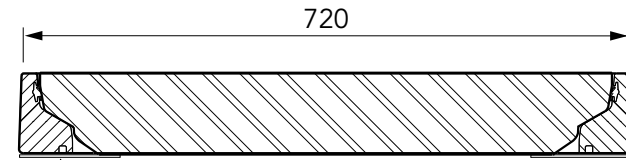
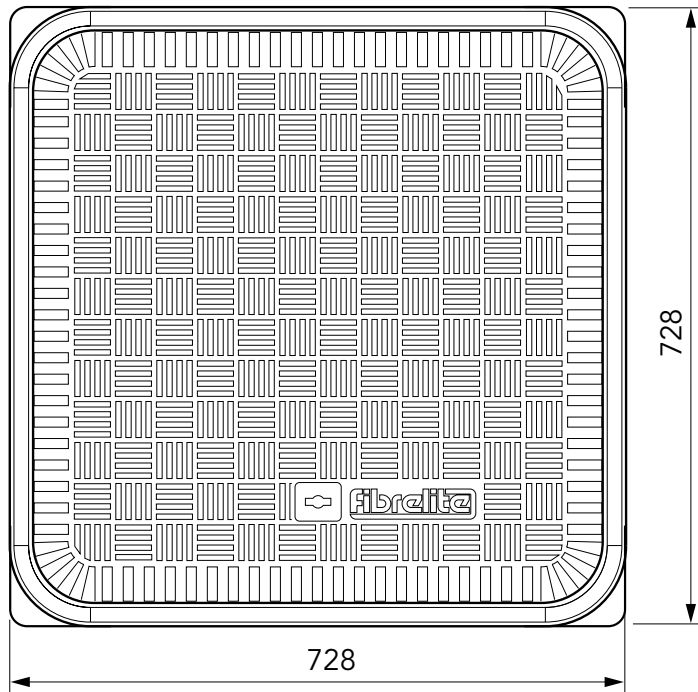
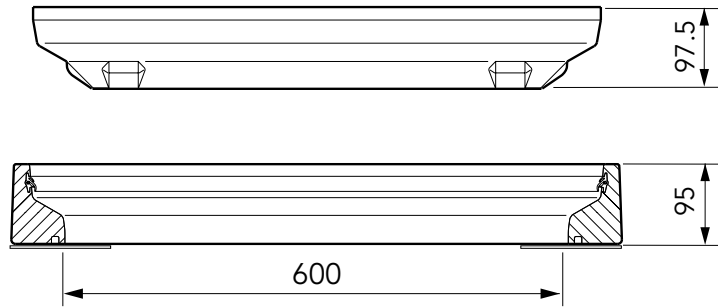




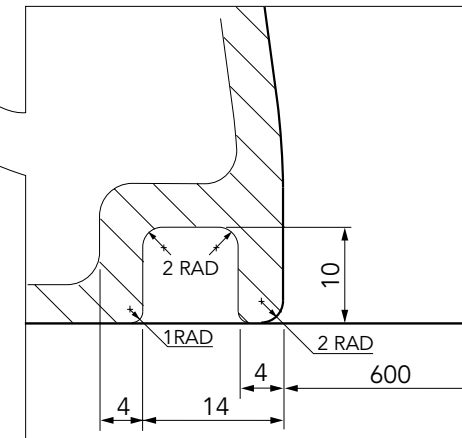
600mm x 600mm flat sealed composite cover with an aluminium frame. Temperature & chemical resistant. Designed for steam applications.

For reference purposes only. This drawing is not a specification. Order against product code only. To enable continuous improvement of our products, the designs and specifications are subject to change without notice.

**FIBRELITE**   
PART OF OPW A DOVER COMPANY



GROOVE DETAIL



Load Rating	Cover Weight	Frame Weight
C250	20 kg	11 kg

600mm x 600mm flat sealed composite cover with an aluminium frame. Temperature & chemical resistant. Designed for steam applications.

For reference purposes only. This drawing is not a specification. Order against product code only. To enable continuous improvement of our products, the designs and specifications are subject to change without notice.



**CONCRETE**

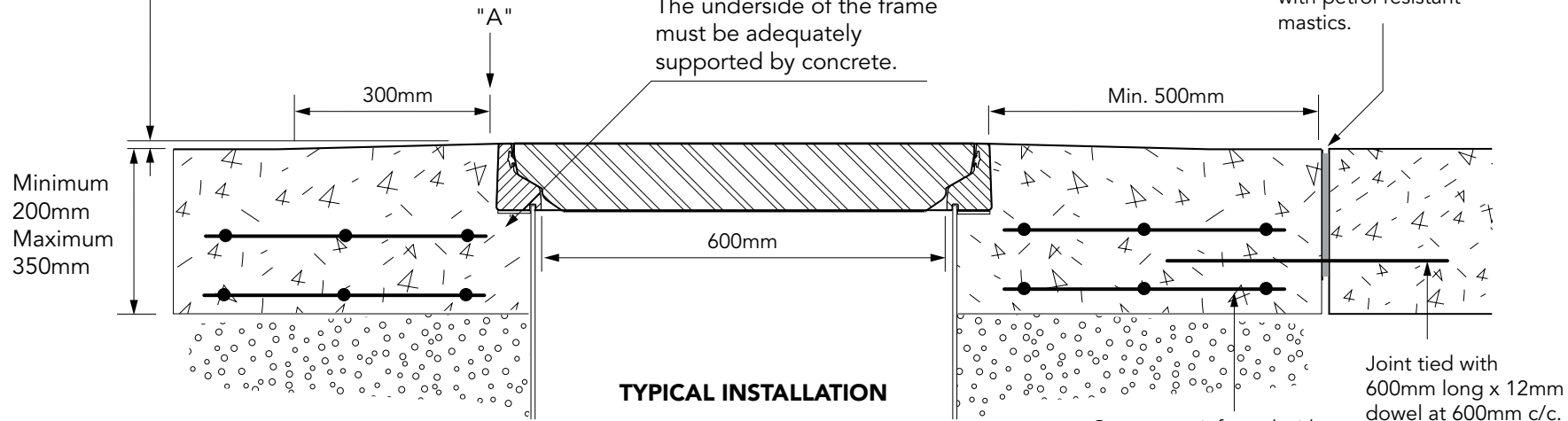
**VERY IMPORTANT**

OUTER EDGE 'A' OF FRAME SET 5MM ABOVE GENERAL FORECOURT AREA WITH CONCRETE RAMPED AWAY OVER 300MM

**VERY IMPORTANT**

The underside of the frame must be adequately supported by concrete.

Expansion joint filled with petrol resistant mastics.



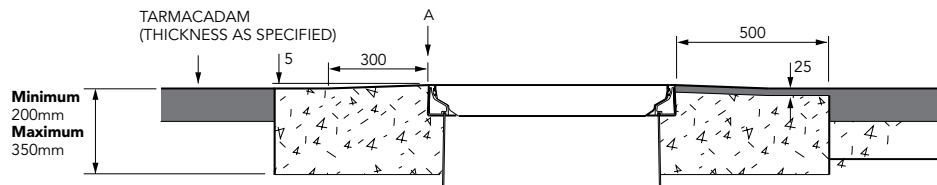
**TYPICAL INSTALLATION**

Concrete reinforced with 2 layers of reinforcement mesh.

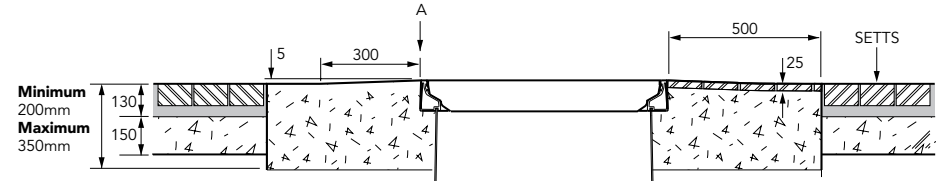
Joint tied with 600mm long x 12mm dowel at 600mm c/c. Half bonded.

TARMACADAM
  PEA GRAVEL
  CONCRETE
  SAND

**TARMACADAM**



**SETTS**



600mm x 600mm flat sealed composite cover with an aluminium frame. Temperature & chemical resistant. Designed for steam applications.

For reference purposes only. This drawing is not a specification. Order against product code only. To enable continuous improvement of our products, the designs and specifications are subject to change without notice.

