

REPAIR INSTRUCTIONS

FL140 Flat Sealed Covers Seal - Removal and Replacement

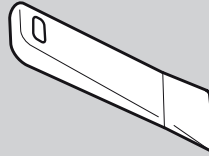
INTRODUCTION

The seal comprises of a rubber seal. To replace the existing seal, carry out the following with the fitting components illustrated below:

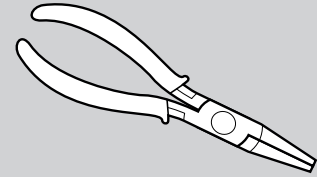
Equipment Required



Silicone Grease

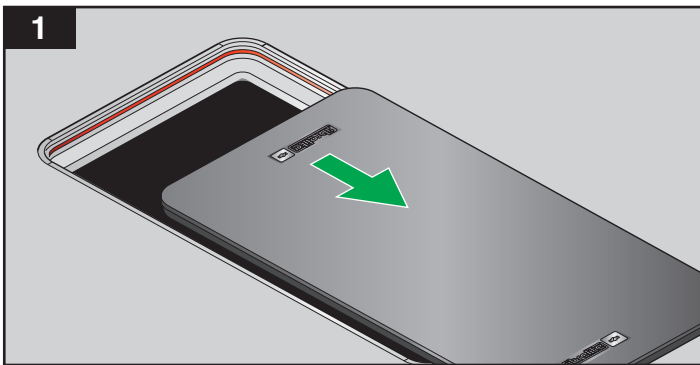


Blade

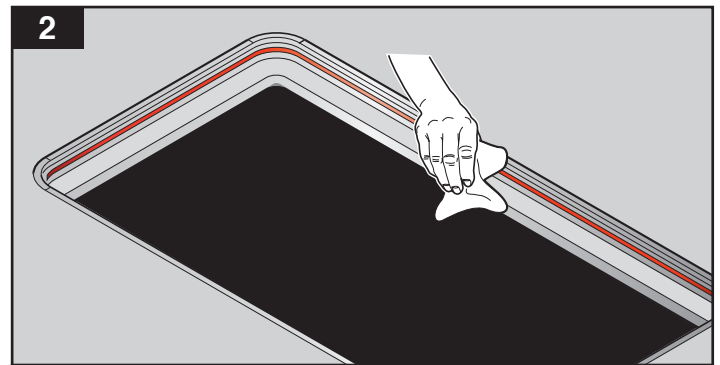


Pliers

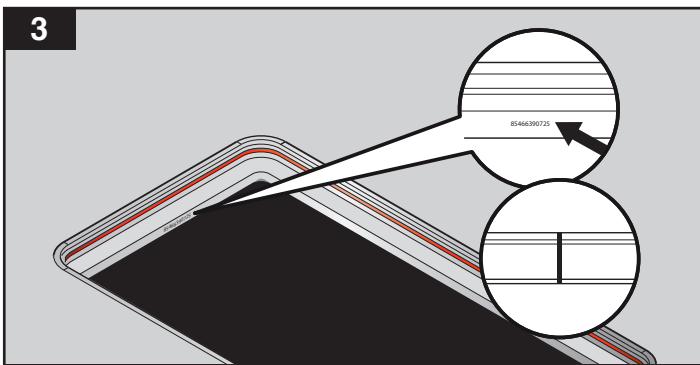
Removing the Old Seal



1 Remove the cover.

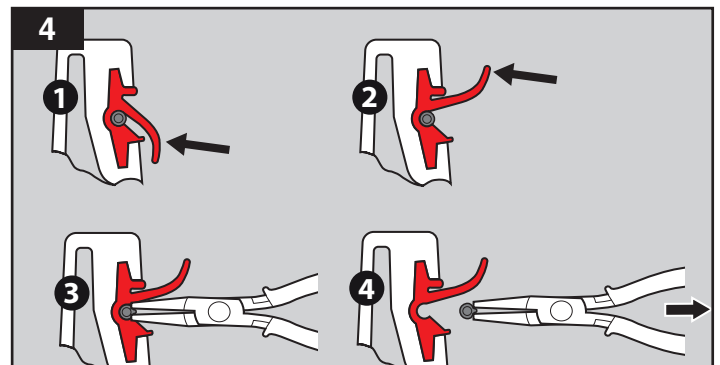


2 Clean off all dirt from the frame and seal.



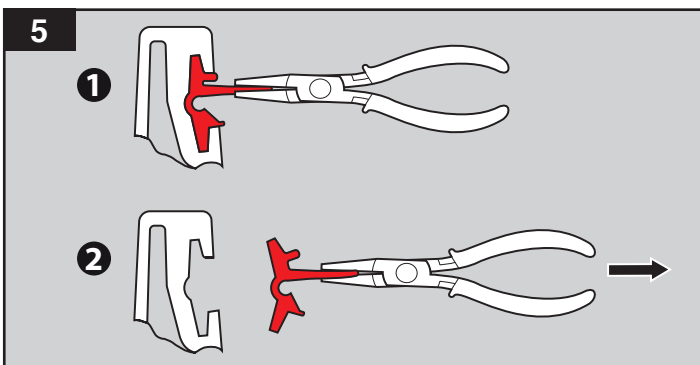
ONLY IF NYLON TUBE IS FITTED

Check to see if a nylon tube is fitted. If so, locate the joint. This is positioned above the frame serial number located on one of the vertical sides.

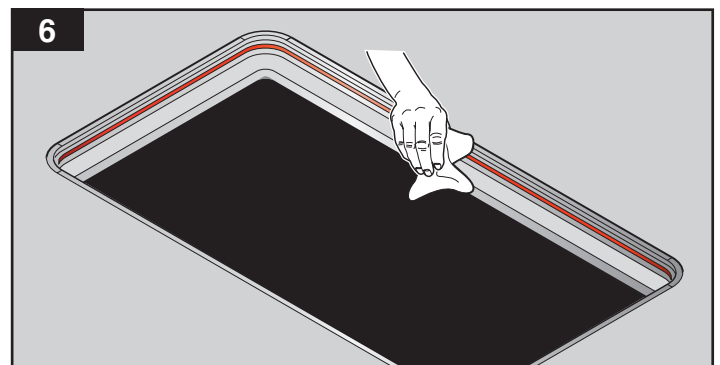


ONLY IF NYLON TUBE IS FITTED

Lift up the seal to reveal the tube. Using a pair of pliers pinch the tube then pull out and discard.



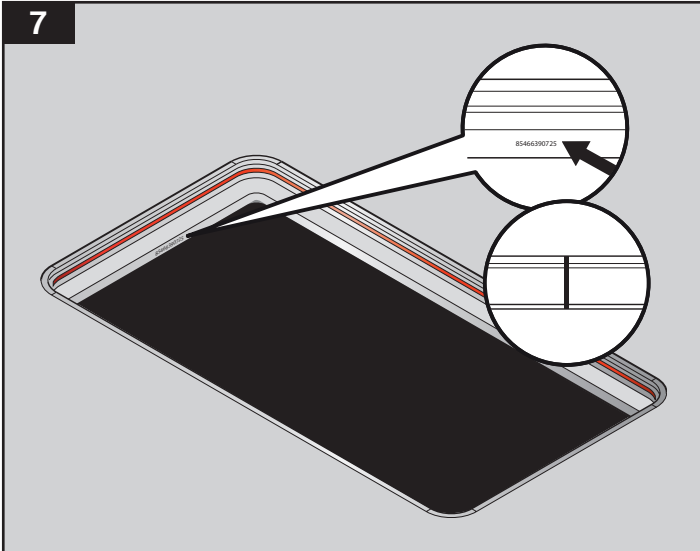
5 Grip the seal with a pair of pliers and pull out horizontally.



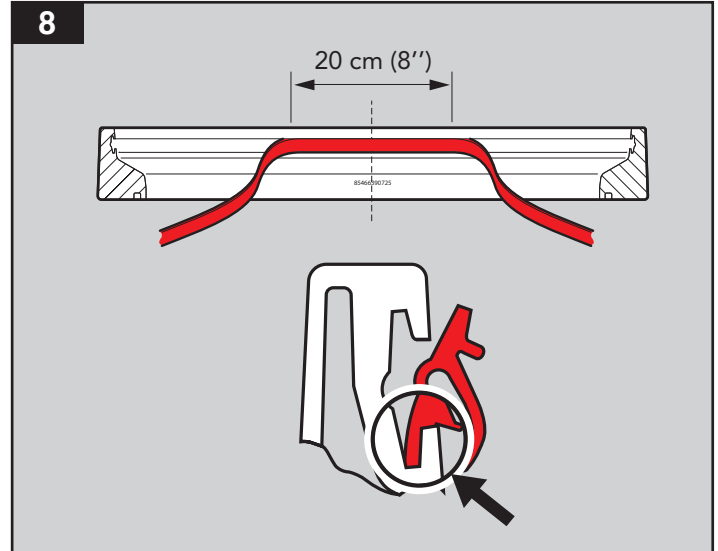
6 Again re-clean the frame prior to replacing the seal.

REPAIR INSTRUCTIONS

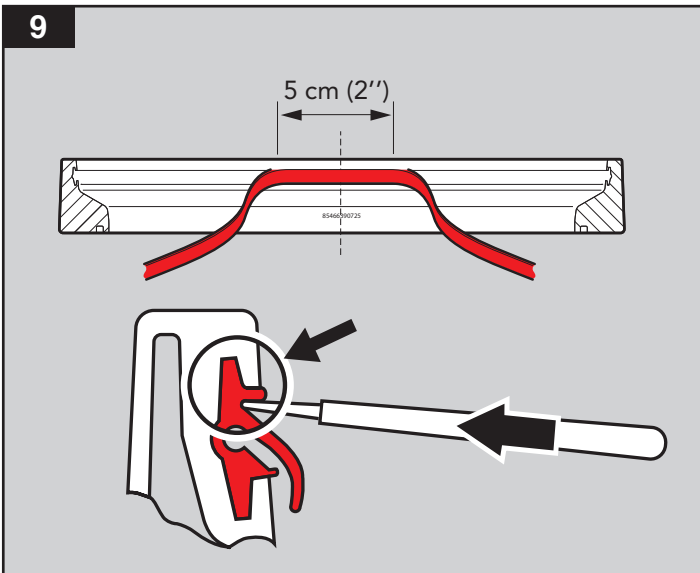
(Installing The New Seal)



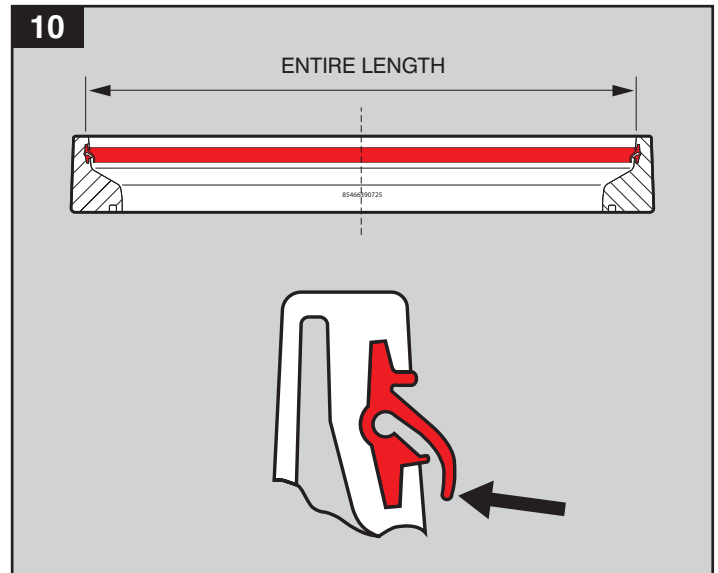
The new seal has a moulded vertical joint. Start with this joint directly opposite to the frame serial number.



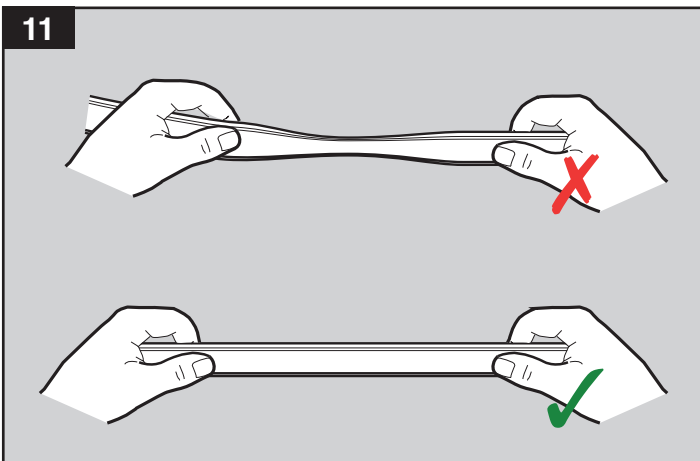
'Tuck' the seal bottom lip into the extrusion seal housing for approximately 20 cm (8")



Using a round edged blade 'tuck' approximately 5cm (2") of the seal top lip into the housing start point.



Now 'tuck' the silicone seal bottom lip into the frame around its entire length.



Avoid stretching during application.

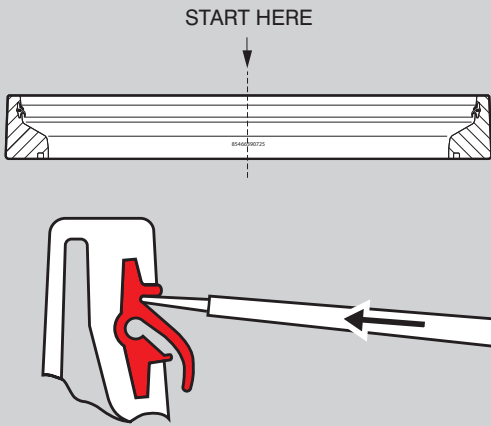


Apply a light coating silicone grease to the seal.

REPAIR INSTRUCTIONS

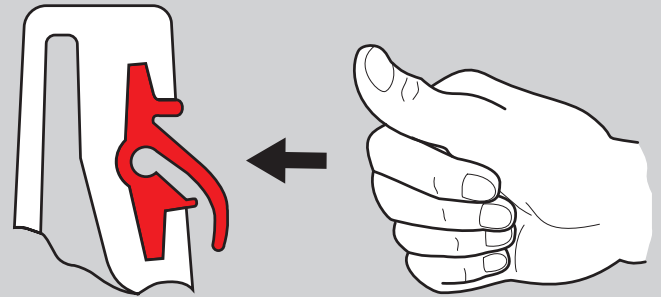
(Installing The New Seal)

13



Starting at the moulded seal joint push the seal top lip into the extrusion seal housing by running the blade along the the seal top lip.

14



Ensure the seal is seated correctly by applying hand pressure to the front face of the seal.