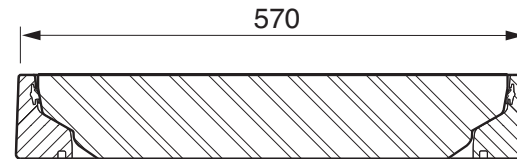
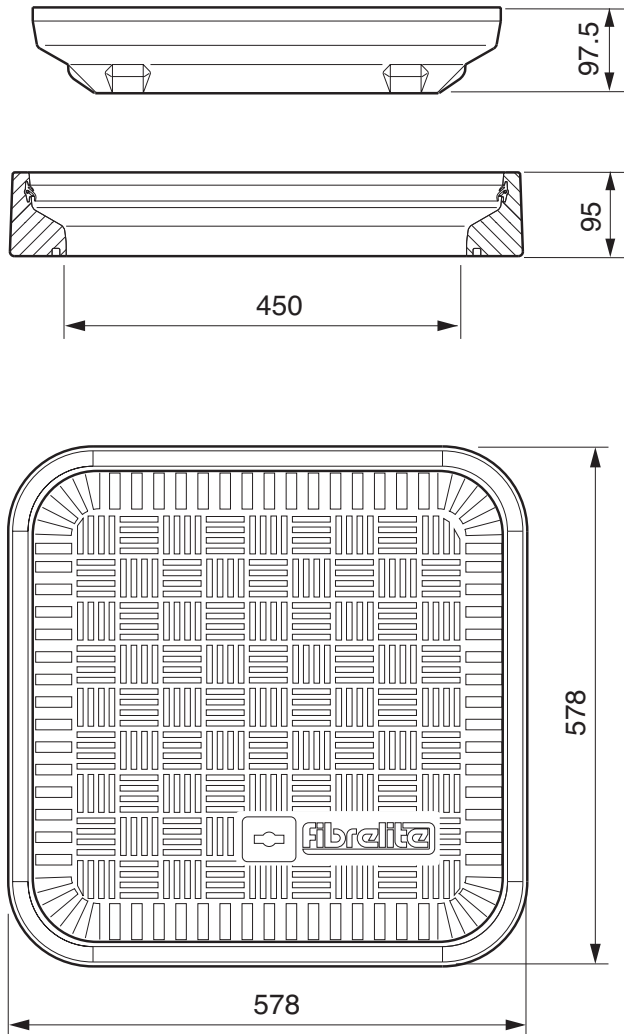


457mm square flat sealed composite cover and aluminium frame.

For reference purposes only. This drawing is not a specification. Order against product code only. To enable continuous improvement of our products, the designs and specifications are subject to change without notice.

**FIBRELITE**   
PART OF OPW A DOVER COMPANY

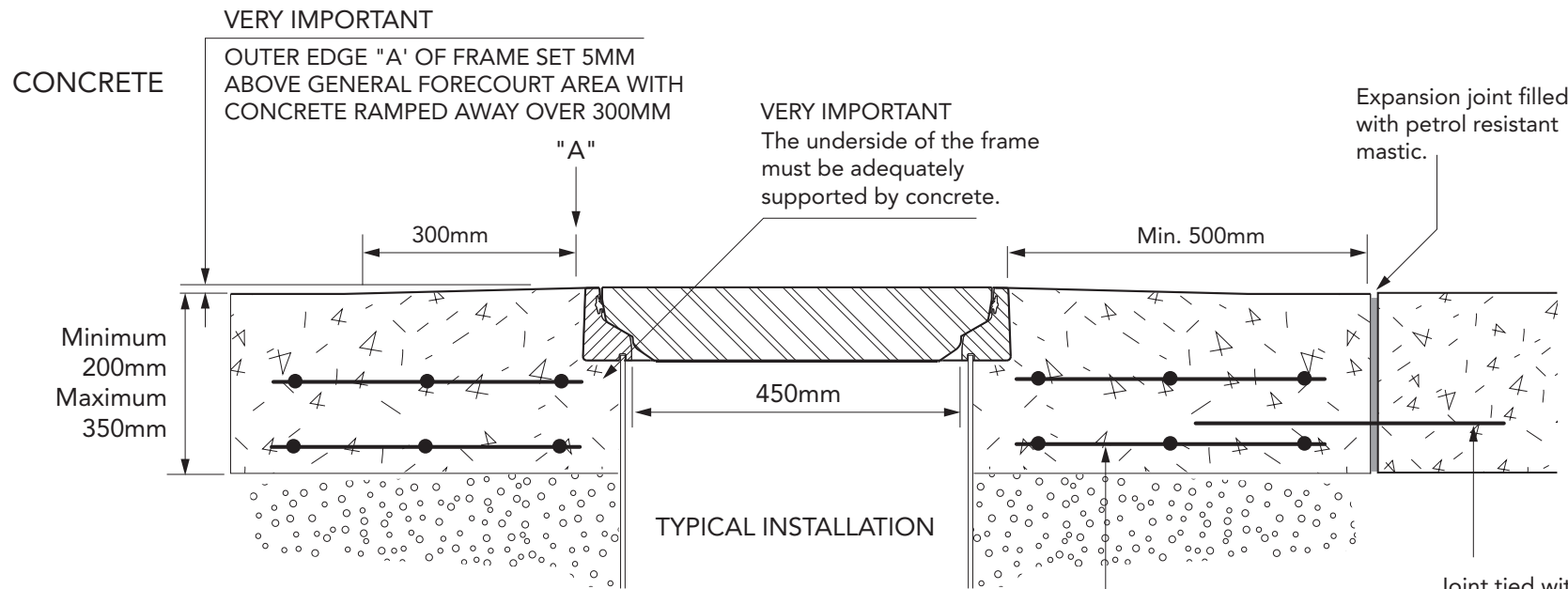


Load Rating	Cover Weight	Frame Weight
B125	8 kg	8.5 kg
C250	11.5 kg	8.5 kg
D400	16 kg	8.5 kg

457mm square flat sealed composite cover and aluminium frame.

For reference purposes only. This drawing is not a specification. Order against product code only. To enable continuous improvement of our products, the designs and specifications are subject to change without notice.



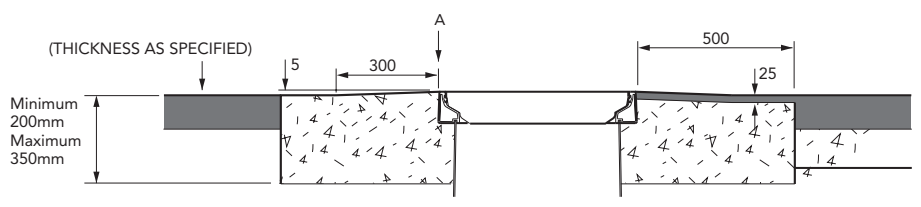


Concrete reinforced with 2 layers of reinforcement mesh.

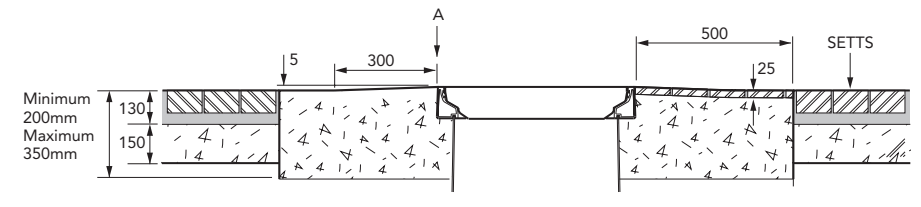
Joint tied with 600mm long x 12mm dowel at 600mm c/c. Half bonded

TARMACADAM
  PEA GRAVEL
  CONCRETE
  SAND

**TARMACADAM**



**SETTS**



457mm square flat sealed composite cover and aluminium frame.

For reference purposes only. This drawing is not a specification. Order against product code only. To enable continuous improvement of our products, the designs and specifications are subject to change without notice.

