

OPERATING INSTRUCTIONS

FL7 Operation - Round and Square Raised Cover Removal and Replacement



Issue: 29/04/2017

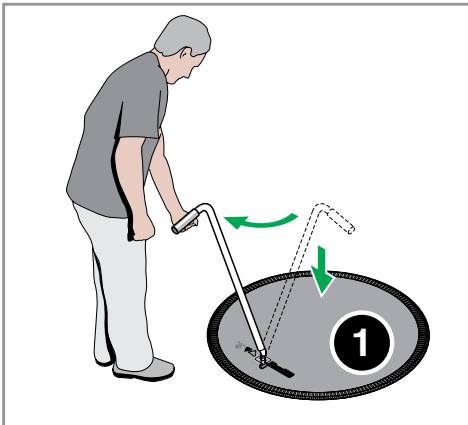
P L E A S E H A N D T O S I T E O P E R A T O R

FL1, FL3, FL10, FL12, FL36, FL42 and FL45 OPERATING INSTRUCTIONS

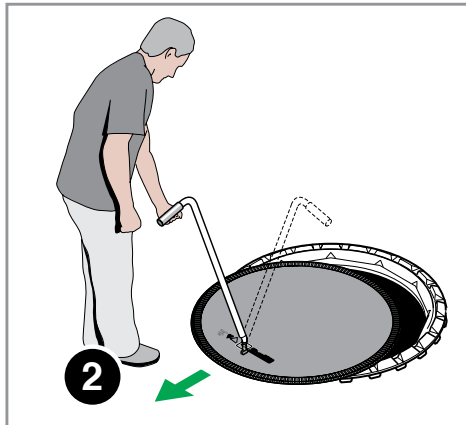
WARNING

The handle must be used at all times to remove/replace the cover. Do not insert any levering device between the cover and frame. Periodically remove the bung in the base of the key housing to clear debris. Fill with grease or anti-freeze in winter.

COVER REMOVAL



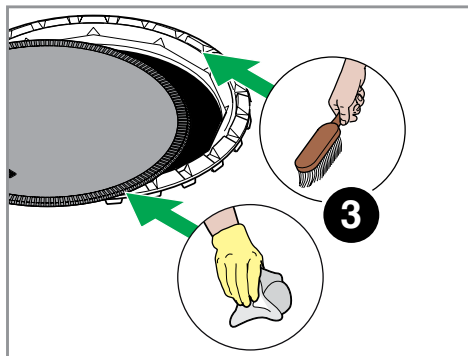
Insert handle, turn clockwise.



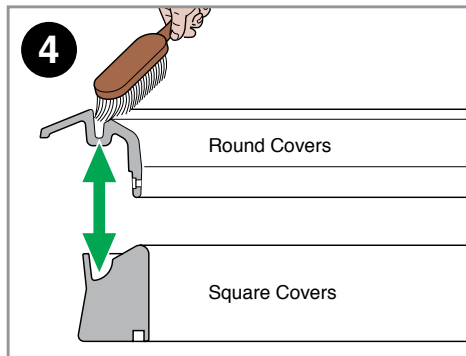
Pull cover back towards you.



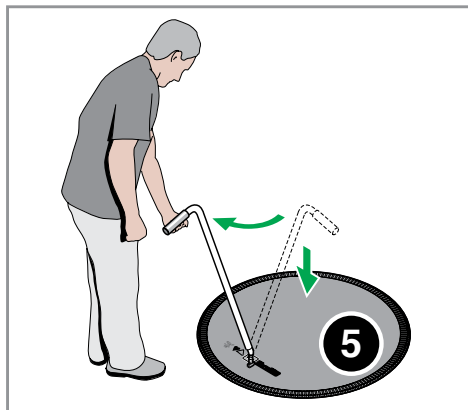
COVER REPLACEMENT



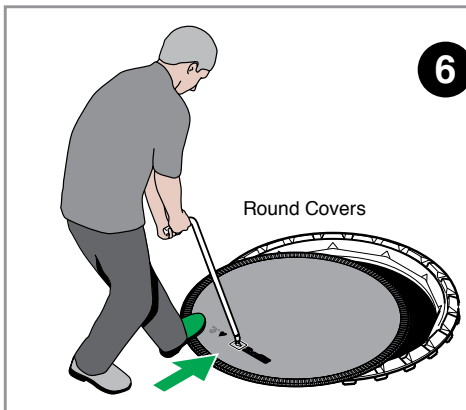
Clean the cover and frame.



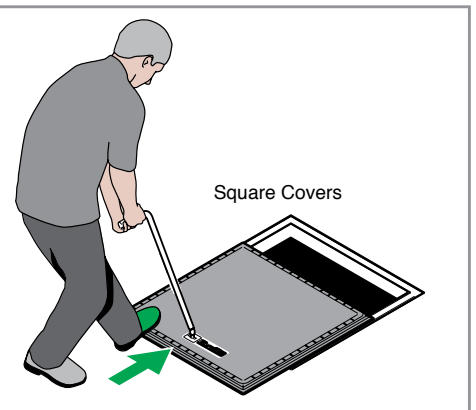
Ensure the water check channel is free from debris.



Insert handle, turn clockwise.



With the aid of the foot, push the cover over the opening.



We've got you covered

UK Office: T: + 44 (0) 1756 799 773
F: + 44 (0) 1756 799 539, E: enquiries@fibrelite.com

USA Office: T: + 1 800 422 2525
F: + 1 (800) 421 3297, E: enquiries@fibrelite.com

Malaysia Office: T: + 603-7847 1888
F: + 603-7846 7788, E: enquiries@fibrelite.com