

# OPERATING / MAINTENANCE INSTRUCTIONS

## FL7, 4 Operative Operation - Trench Cover Removal and Replacement

**FIBRELITE**   
PART OF OPW A DOW COMPANY

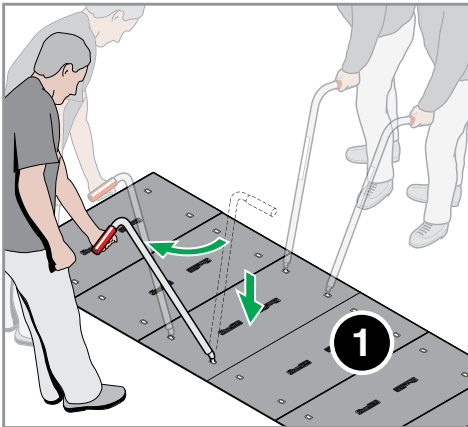
Issue: 07/05/2020

P L E A S E   H A N D   T O   S I T E   O P E R A T O R

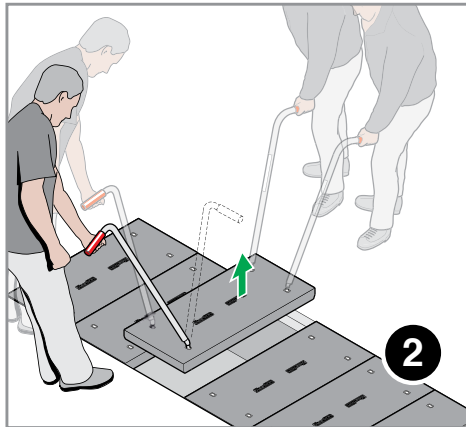
### WARNING

The handles must be used at all times to remove/replace the cover. Lifting and replacing the cover is a **minimum two person operation**. Do not insert any levering device between the cover and frame. Do not paint the tread pattern surface as this may compromise the anti-slip properties.

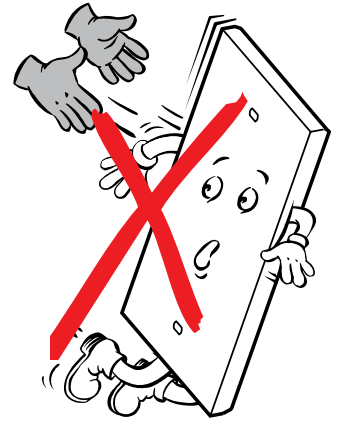
### COVER REMOVAL



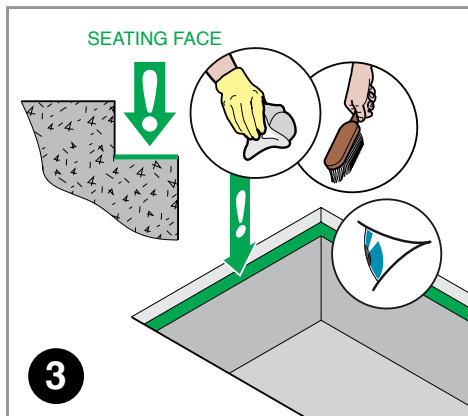
Insert handles at 90° from cover length, turn clockwise.



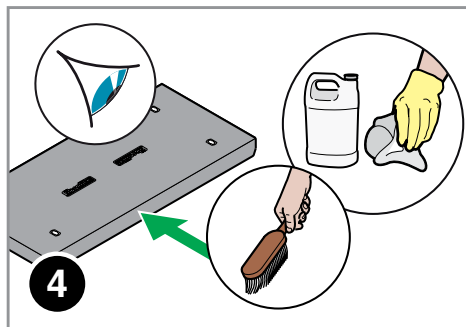
Simultaneously pull the cover upwards.



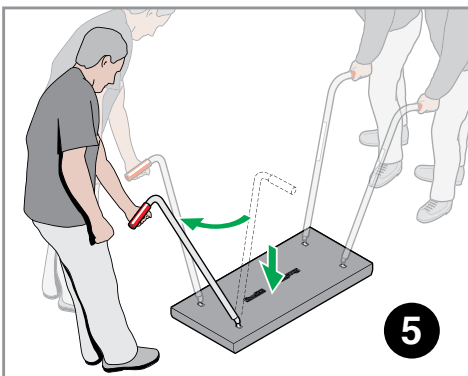
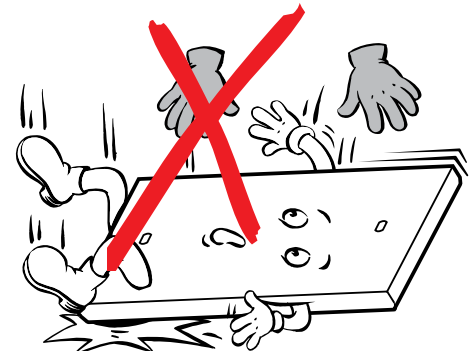
### COVER REPLACEMENT / MAINTENANCE



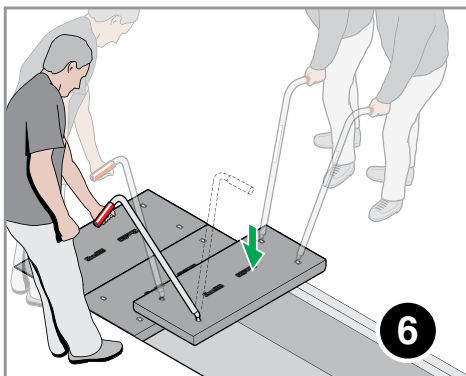
Clear and clean the frame or rebate, particularly the seating face. Inspect for damage.



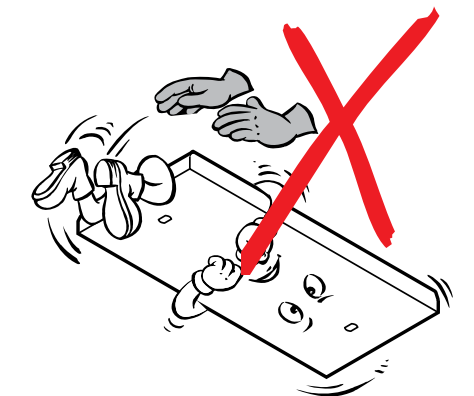
Clean the cover using only warm water and standard cleaning detergents. Inspect for damage. Frequency depends on use and the working environment but it is recommended that cleaning and inspection are carried out at least once every 6 months. It is recommended that spillages are clean up immediately.



Insert handles at 90° from cover length, turn clockwise.



Lower the cover into position.



### NOTE

If the covers become damaged due to impact they must be repaired to prevent long-term damage to the internal structure.

Contact Fibrelite's Technical Department

We've got you covered

UK Office: T: + 44 (0) 1756 799 773  
F: + 44 (0) 1756 799 539, E: enquiries@fibrelite.com

USA Office: T: + 1 800 422 2525  
F: + 1 (800) 421 3297, E: enquiries@fibrelite.com

Malaysia Office: T: + 603-7847 1888  
F: + 603-7846 7788, E: enquiries@fibrelite.com