

# OPERATING / MAINTENANCE INSTRUCTIONS

## FL7 Operation - Trench Cover Removal and Replacement

**FIBRELITE**   
PART OF OPW A DOVER COMPANY

Issue: 07/05/2020

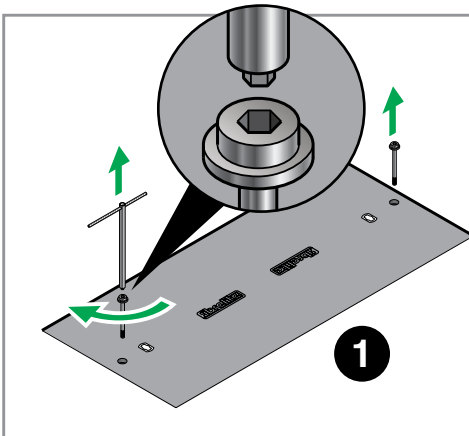
PLEASE HAND TO SITE OPERATOR

### WARNING

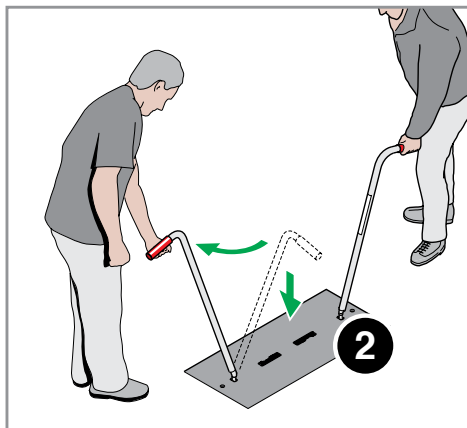
The handles must be used at all times to remove/replace the cover. Lifting and replacing the cover is a **two person operation**. Do not insert any levering device between the cover and frame. Do not paint the tread pattern surface as this may compromise the anti-slip properties.



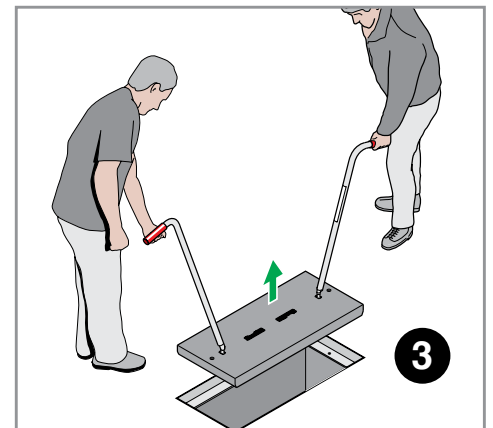
### REMOVAL - UOB NBIF TRENCH COVERS



Using the T-bar Allen Key, remove the 2 No. restraining bolts.

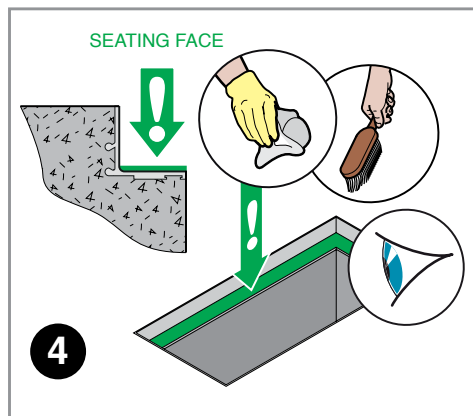


Insert handles at 90° from cover length, turn clockwise.

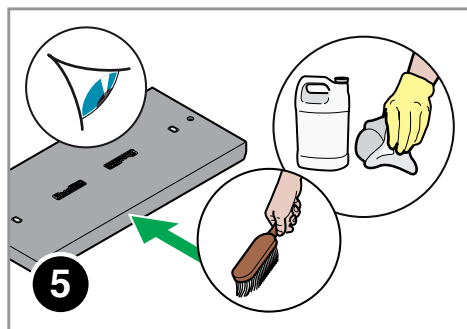


Simultaneously pull the cover upwards.

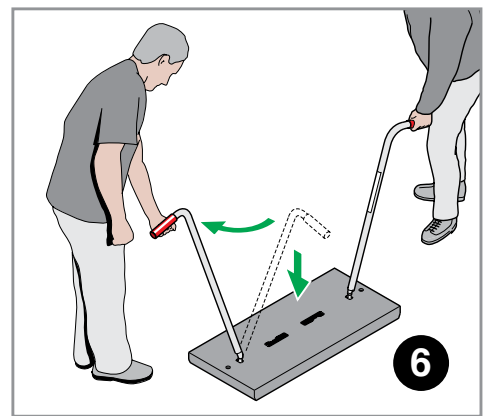
### REPLACEMENT/ MAINTENANCE - UOB NBIF TRENCH COVERS



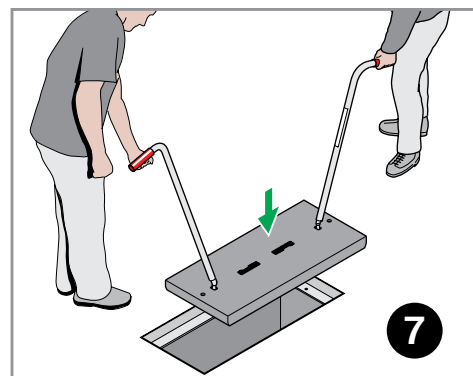
Clear and clean the frame or rebate, particularly the seating face. Inspect for damage.



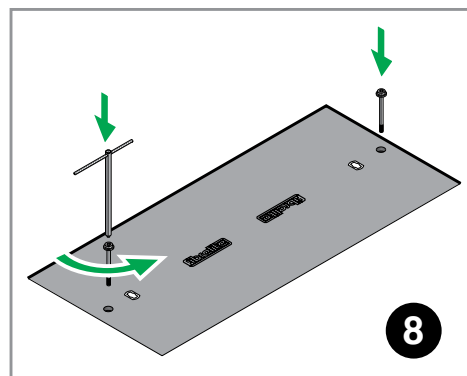
Clean the cover using only warm water and standard cleaning detergents. Inspect for damage. Frequency depends on use and the working environment but it is recommended that cleaning and inspection are carried out at least once every 6 months. It is recommended that spillages are clean up immediately.



Insert handles at 90° from cover length, turn clockwise.



Lower the cover into position.



Using the T-bar, replace the 2 No. restraining bolts.

#### Cover Load Rating

The covers are badged/Marked B125, which means they comply with the loading requirements of BS EN 124. This standard identifies the point load on the B125 covers as a concentrated point load of 125kN on a footprint of 250 mm diameter test disc so this is used as the wheel footprint/point load.

### NOTE

If the covers become damaged due to impact they must be repaired to prevent long-term damage to the internal structure.

Contact Fibrelite's Technical Department

We've got you covered

UK Office: T: + 44 (0) 1756 799 773  
F: + 44 (0) 1756 799 539, E: enquiries@fibrelite.com

USA Office: T: + 1 800 422 2525  
F: + 1 (800) 421 3297, E: enquiries@fibrelite.com

Malaysia Office: T: + 603-7847 1888  
F: + 603-7846 7788, E: enquiries@fibrelite.com