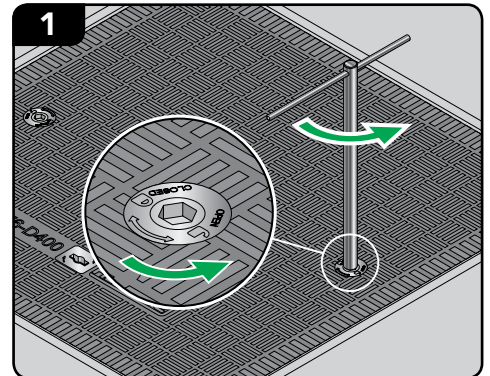


COVER REMOVAL

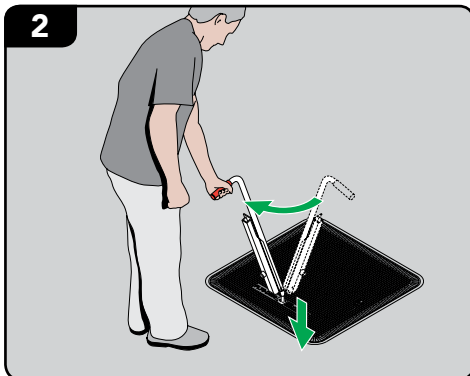
WARNING

The handle must be used at all times to remove/replace the cover. Do not insert any levering device between the cover and frame.

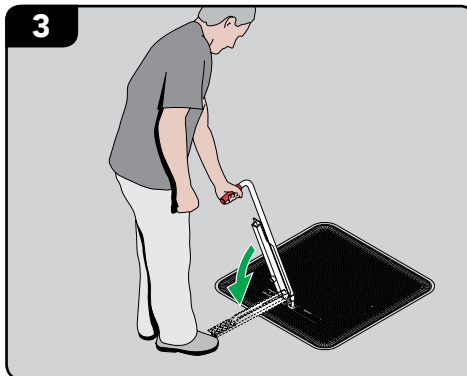
Periodically remove debris from the cover key-housing. Fill with grease or anti-freeze in cold climates during winter.



1 Use the lock key and rotate anti-clockwise to unlock the 2 No. locks.



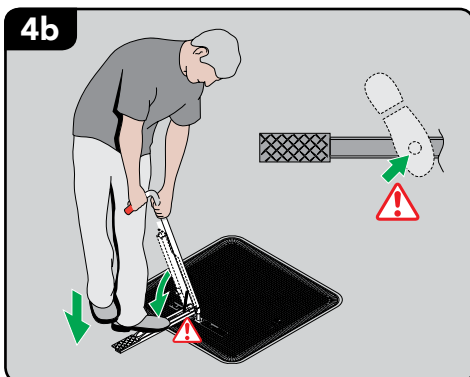
2 Insert handle, turn clockwise.



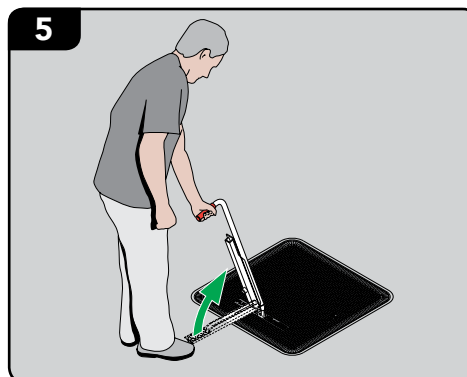
3 Release foot pedal.



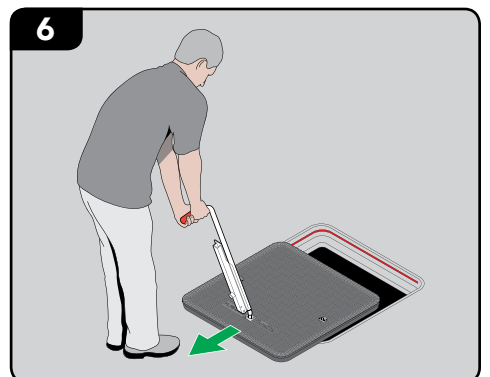
4a Push down on foot pedal.



4b If cover will not lift, stand on lever, stamp on pedal.



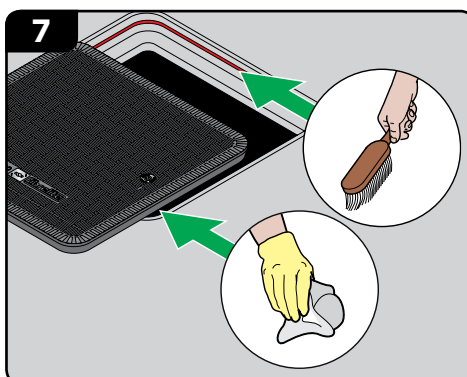
5 Return lever to upright position.



6 Remove cover.

We've got you covered

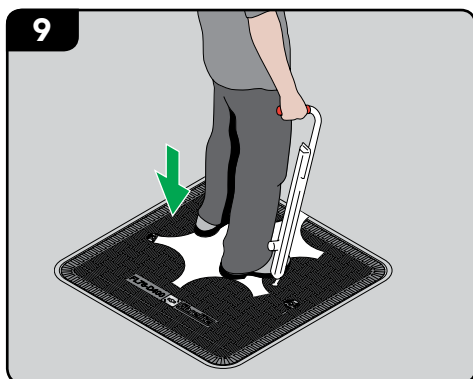
**COVER
REPLACEMENT**



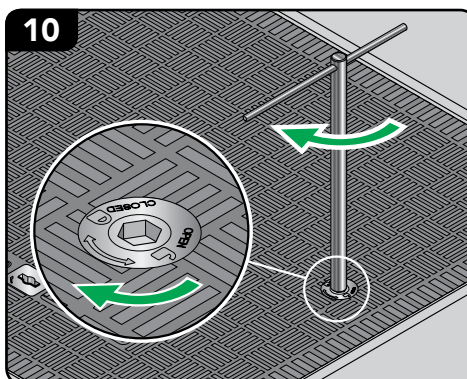
Clean the frame gasket/seal and cover as required.



Align correctly with frame. Push cover into position using your foot.



Stamp cover down.



Use the lock key and rotate clockwise to lock the 2 No. locks.