

OPERATING INSTRUCTIONS

FL7A Operation - Round Flat Sealed Cover Removal and Replacement

FIBRELITE

PART OF OPW A DOVER COMPANY

Issue: 29/04/2017

PLEASE HAND TO SITE OPERATOR

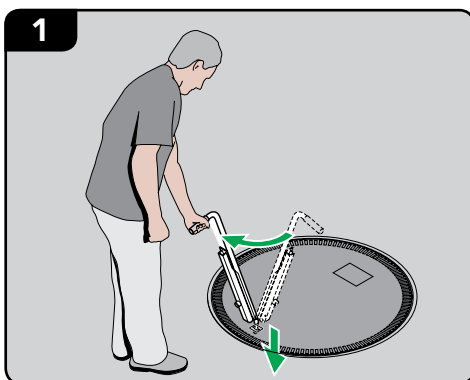
FL90, FL100, FL120, FL180, FL600 and FL760 OPERATING INSTRUCTIONS

WARNING

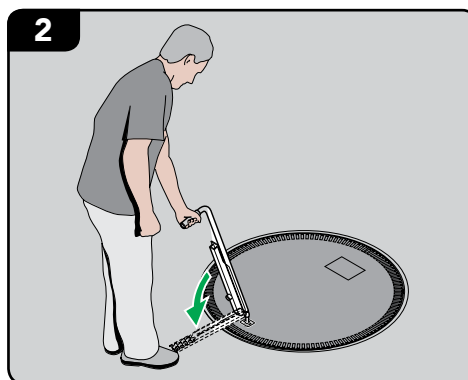
The handle must be used at all times to remove/replace the cover. Do not insert any levering device between the cover and frame. Periodically remove the bung in the base of the key housing to clear debris. Fill with grease or anti-freeze in cold climates during winter.



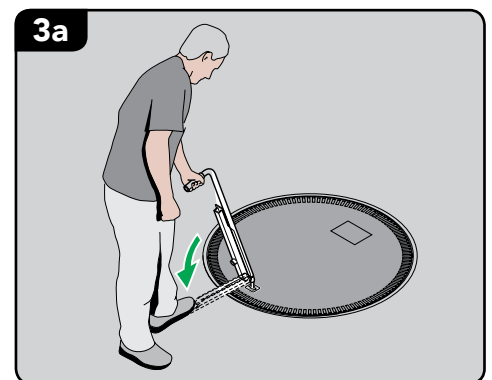
COVER REMOVAL



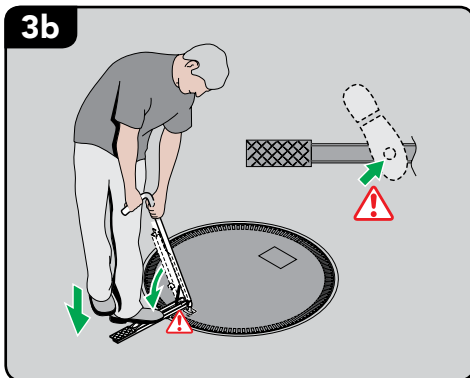
1 Insert handle, turn clockwise.



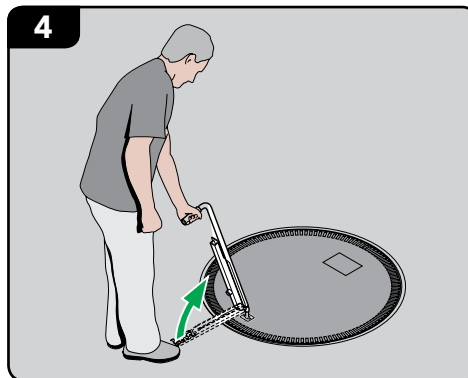
2 Release foot pedal.



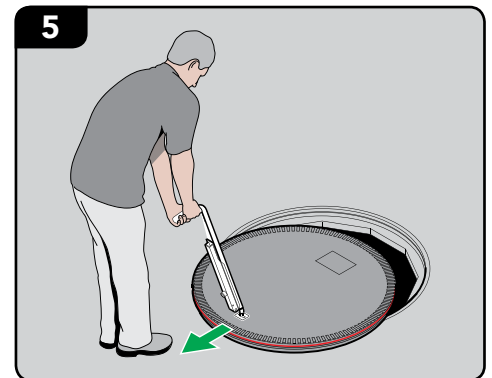
3a Push down on foot pedal.



3b If cover will not lift, Stand on lever, stamp on pedal.

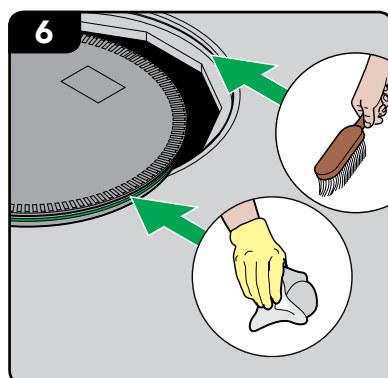


4 Return lever to upright position.

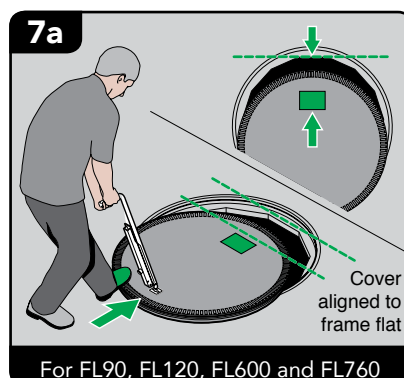


5 Remove cover.

COVER REPLACEMENT

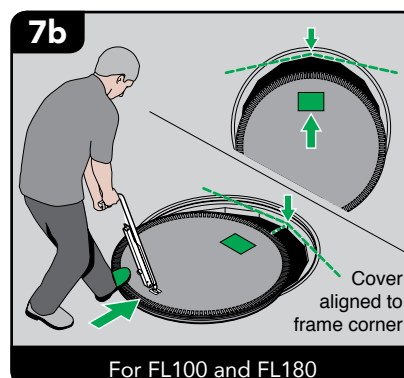


6 Clean the frame and cover gasket/seal as required.

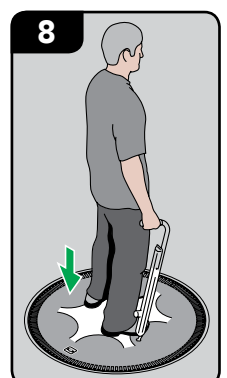


7a For FL90, FL120, FL600 and FL760

Align correctly with frame. Push cover into position using your foot.



7b For FL100 and FL180



8 Stamp cover down.

We've got you covered

UK Office: T: + 44 (0) 1756 799 773

USA Office: T: + 1 800 422 2525

Malaysia Office: T: + 603-7847 1888

F: + 44 (0) 1756 799 539, E: enquiries@fibrelite.com

F: + 1 (800) 421 3297, E: enquiries@fibrelite.com

F: + 603-7846 7788, E: enquiries@fibrelite.com