

OPERATING INSTRUCTIONS

FL7A Operation - Square Flat Sealed Cover Removal and Replacement



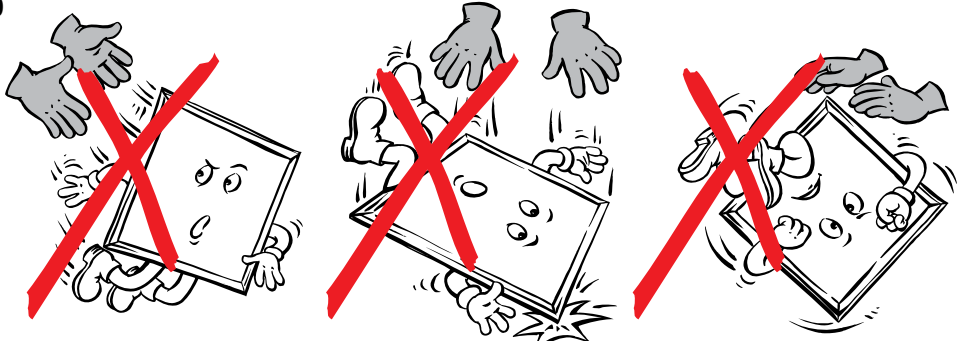
Issue: 29/04/2017

PLEASE HAND TO SITE OPERATOR

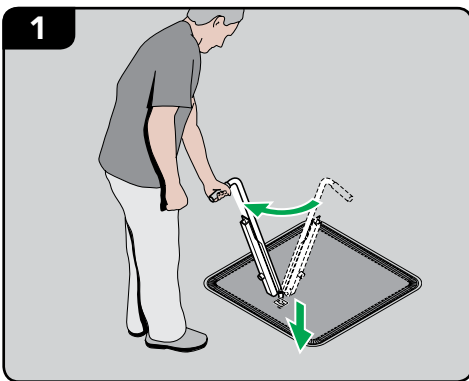
FL450, FL60, FL76, FL900, FL96 & FL140 OPERATING INSTRUCTIONS

WARNING

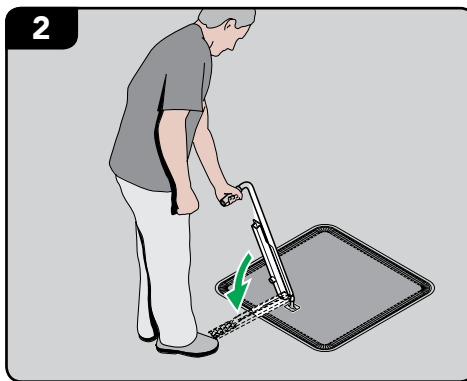
The handle must be used at all times to remove/replace the cover. Do not insert any levering device between the cover and frame. Periodically remove the bung in the base of the key housing to clear debris. Fill with grease or anti-freeze in cold climates during winter.



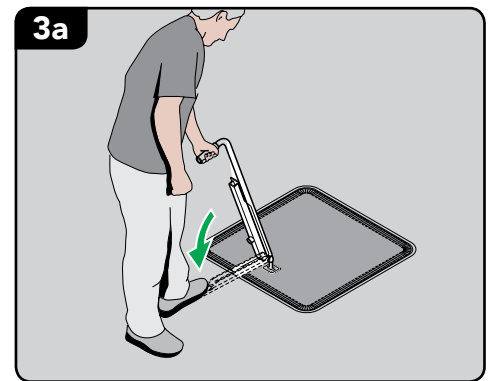
COVER REMOVAL



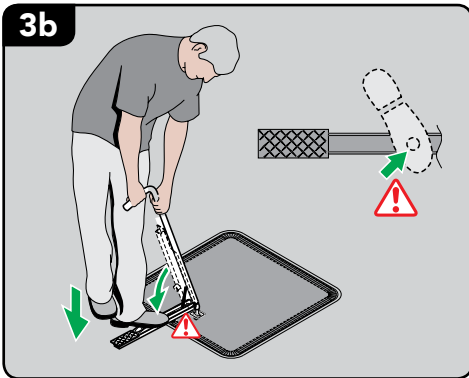
1 Insert handle, turn clockwise.



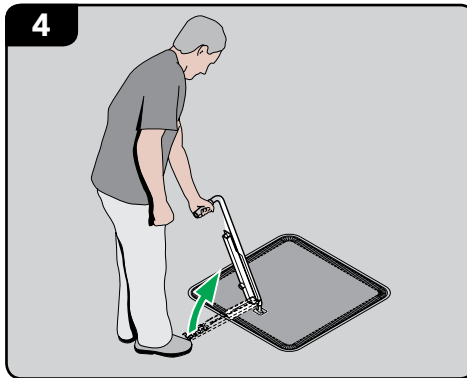
2 Release foot pedal.



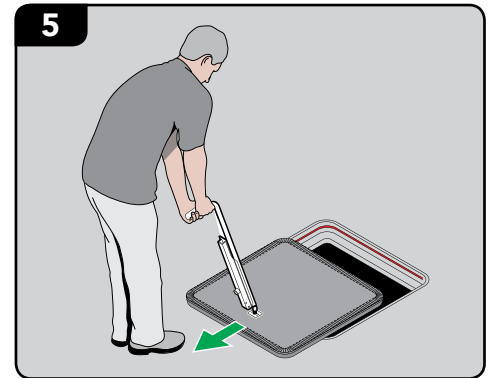
3a Push down on foot pedal.



3b If cover will not lift, stand on lever, stamp on pedal.

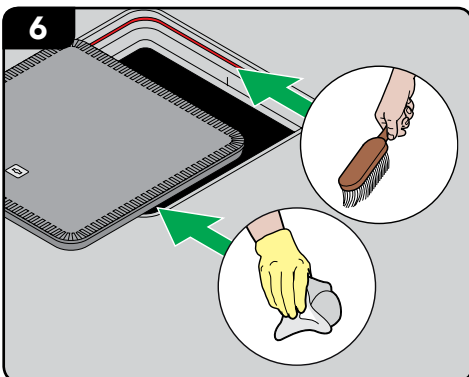


4 Return lever to upright position.

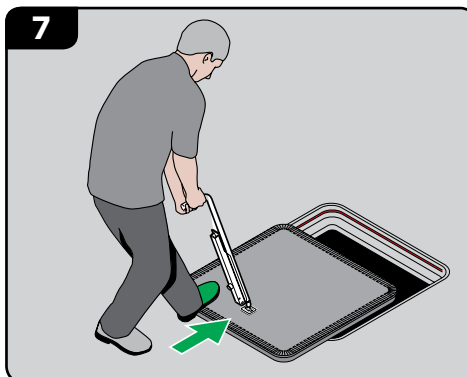


5 Remove cover.

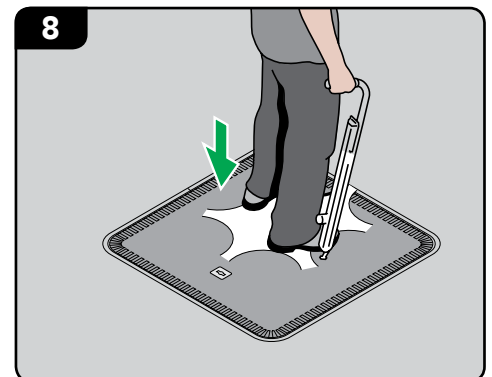
COVER REPLACEMENT



6 Clean the frame gasket/seal and cover as required.



7 Align correctly with frame. Push cover into position using your foot.



8 Stamp cover down.

We've got you covered

UK Office: T: + 44 (0) 1756 799 773
F: + 44 (0) 1756 799 539, E: enquiries@fibrelite.com

USA Office: T: + 1 800 422 2525
F: + 1 (800) 421 3297, E: enquiries@fibrelite.com

Malaysia Office: T: + 603-7847 1888
F: + 603-7846 7788, E: enquiries@fibrelite.com