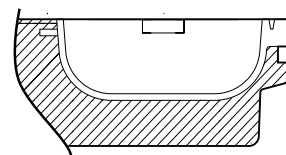
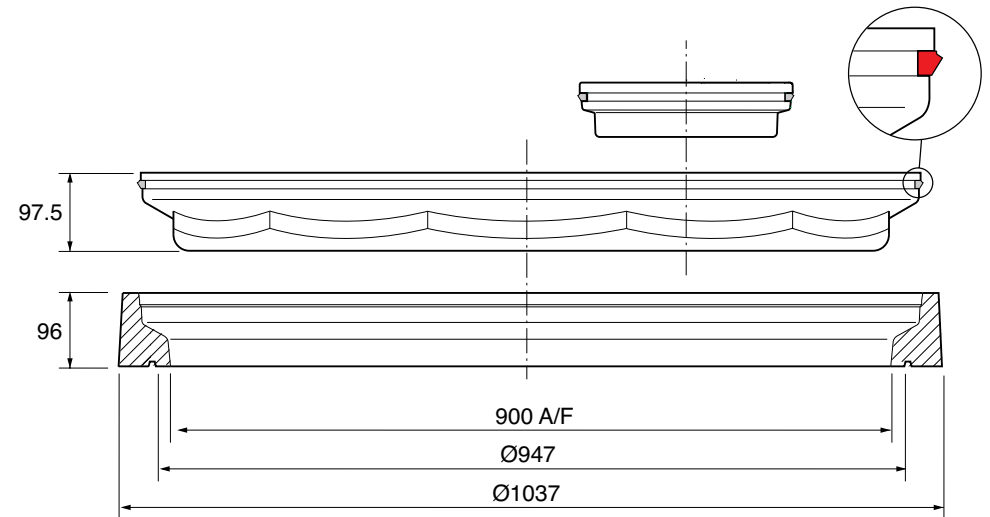
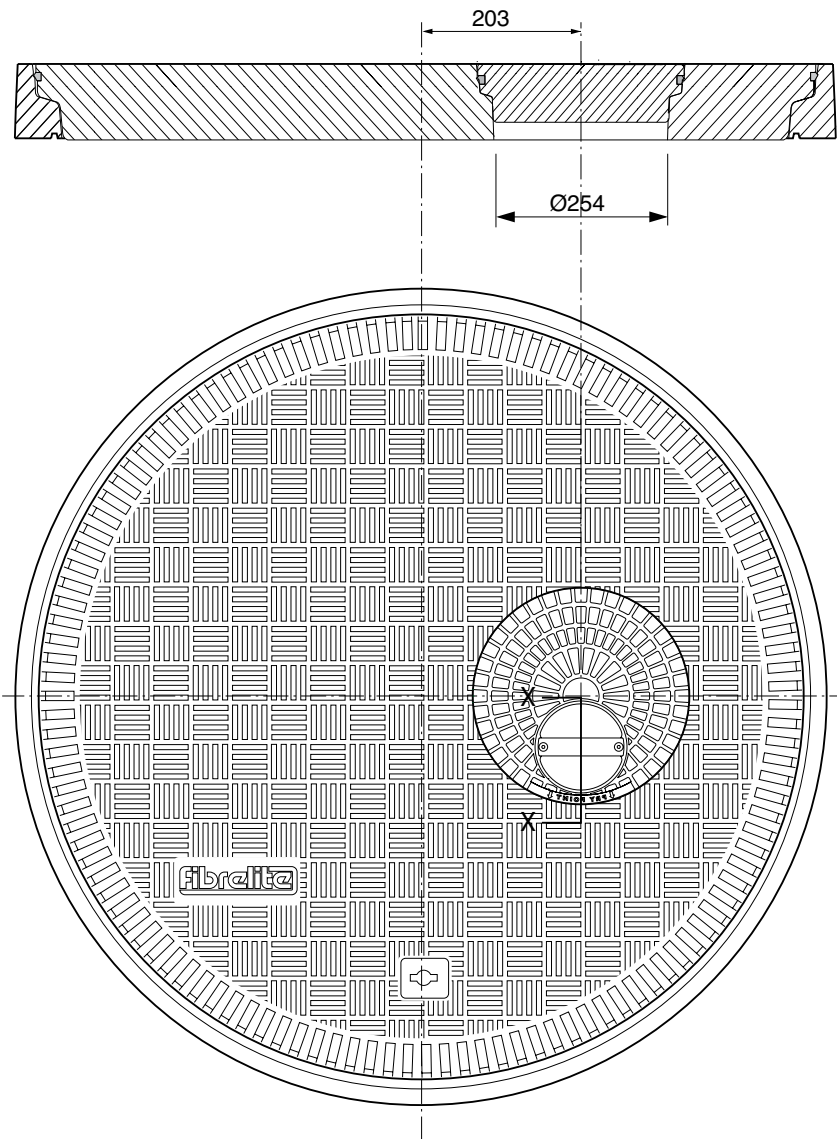


900mm dia. watertight flat sealed composite cover and frame, with offset fill port cover.

For reference purposes only. This drawing is not a specification. Order against product code only. To enable continuous improvement of our products, the designs and specifications are subject to change without notice.

FIBRELITE 
PART OF OPW A DOVER COMPANY



SECTION X - X
HANDLE BOWL

Load Rating	Cover Weight	Frame Weight	Port Cover
C250	38 kg	9.5 kg	3 kg
D400	48 kg	9.5 kg	3 kg

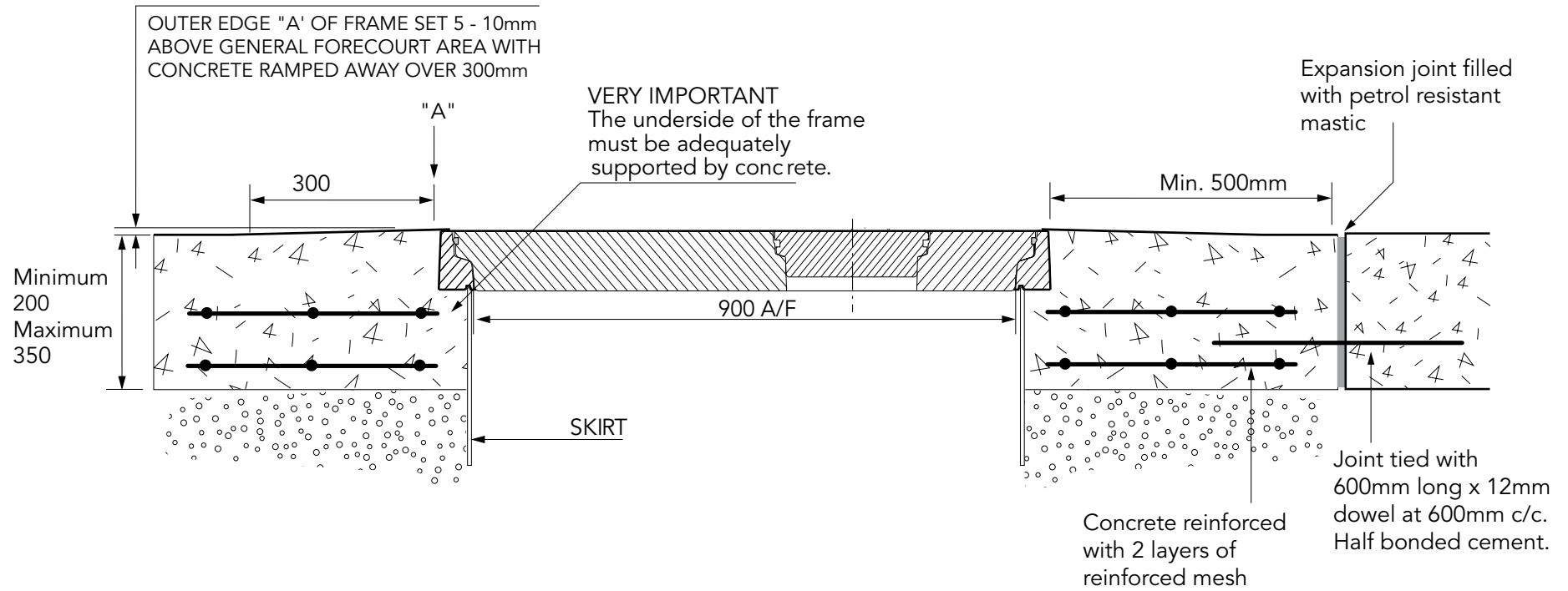
900mm dia. watertight flat sealed composite cover and frame, with offset fill port cover.

For reference purposes only. This drawing is not a specification. Order against product code only. To enable continuous improvement of our products, the designs and specifications are subject to change without notice.



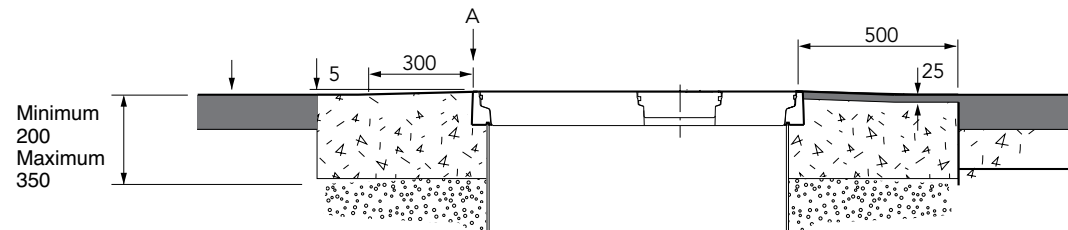
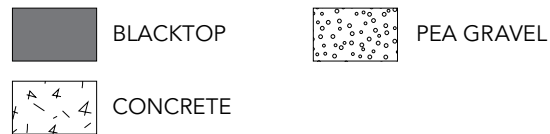
CONCRETE

VERY IMPORTANT



BLACKTOP

(THICKNESS AS SPECIFIED)



900mm dia. watertight flat sealed composite cover and frame, with offset fill port cover.

For reference purposes only. This drawing is not a specification. Order against product code only. To enable continuous improvement of our products, the designs and specifications are subject to change without notice.

