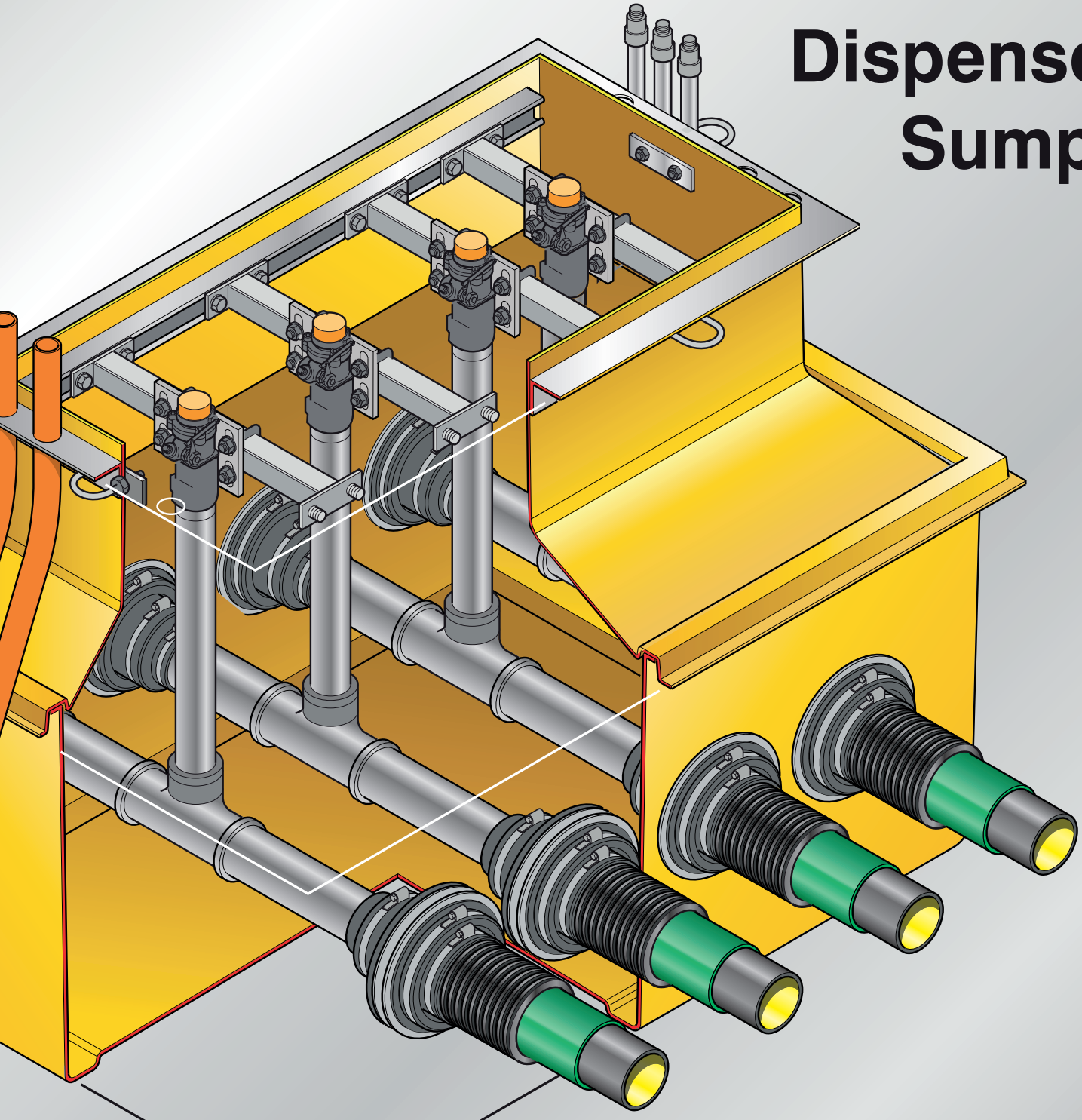


FRP Dispenser Sumps



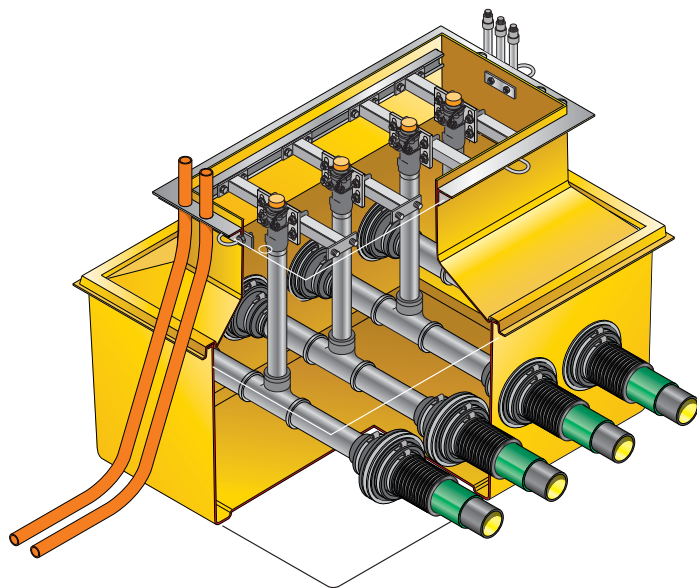
We've got you covered

FIBRELITE 

One Superior Standard - Testable containment, tried and tested reliable performance. Without any

Standard Sump Range

Our new vacuum testable GRP dispenser sump range offers a great alternative to polyethylene sumps. The strong rigid GRP structure will not deflect under ground water pressure. The simple two piece design provides a large working space to install pipework inside the sump, before the top section is installed. Systems are supplied complete with all fixing hardware.



Product Code	Description
--------------	-------------

EL/G/E500	Fits Gilbarco Encore 500
EL/G/ADV/48	Fits Advantage 48"
EL/G/ADV/36	Fits Advantage 36"
EL/G/LEG	Fits Gilbarco Legacy
EL/G/MPD	Fits Advantage MPD
EL/W/VIS/48	Fits Vista 48"
EL/W/VIS/35	Fits Vista 35"
EL/W/OVA	Fits Wayne Ovation

For other dispenser models, please contact Fibrelite for information.

Retro-fit Sump Range

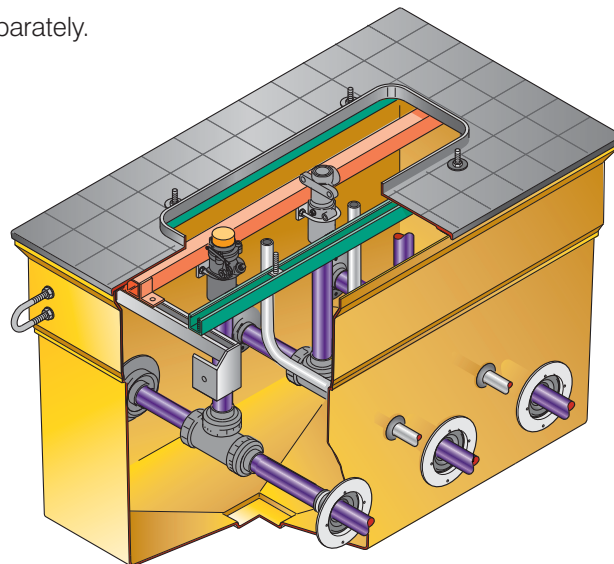
The retro-fit range of sumps is designed to allow new dispenser models to be retro-fitted to the existing sump, without breaking concrete. Only the top plinth needs replacing on the island. The dispenser is bolted to adjustable rails, which can be positioned to fit a variety of footprints. This provides a cost-effective long term solution for underground containment.

The shear valve rail is UL approved and should be ordered separately.

Product Code	Description
--------------	-------------

EL46-20	46" x 26" x 20" deep sump with GRP top, 2 dispensers rails and fixing system
EL46-26	46" x 26" x 30" deep sump with GRP top, 2 dispensers rails and fixing system
EL46-38	46" x 26" x 38" deep sump with GRP top, 2 dispensers rails and fixing system
EL46-26/SVR	Stainless steel UL approved shear valve rail
MPK-10	Shear valve mounting plate kit, to fit OPW shear valves

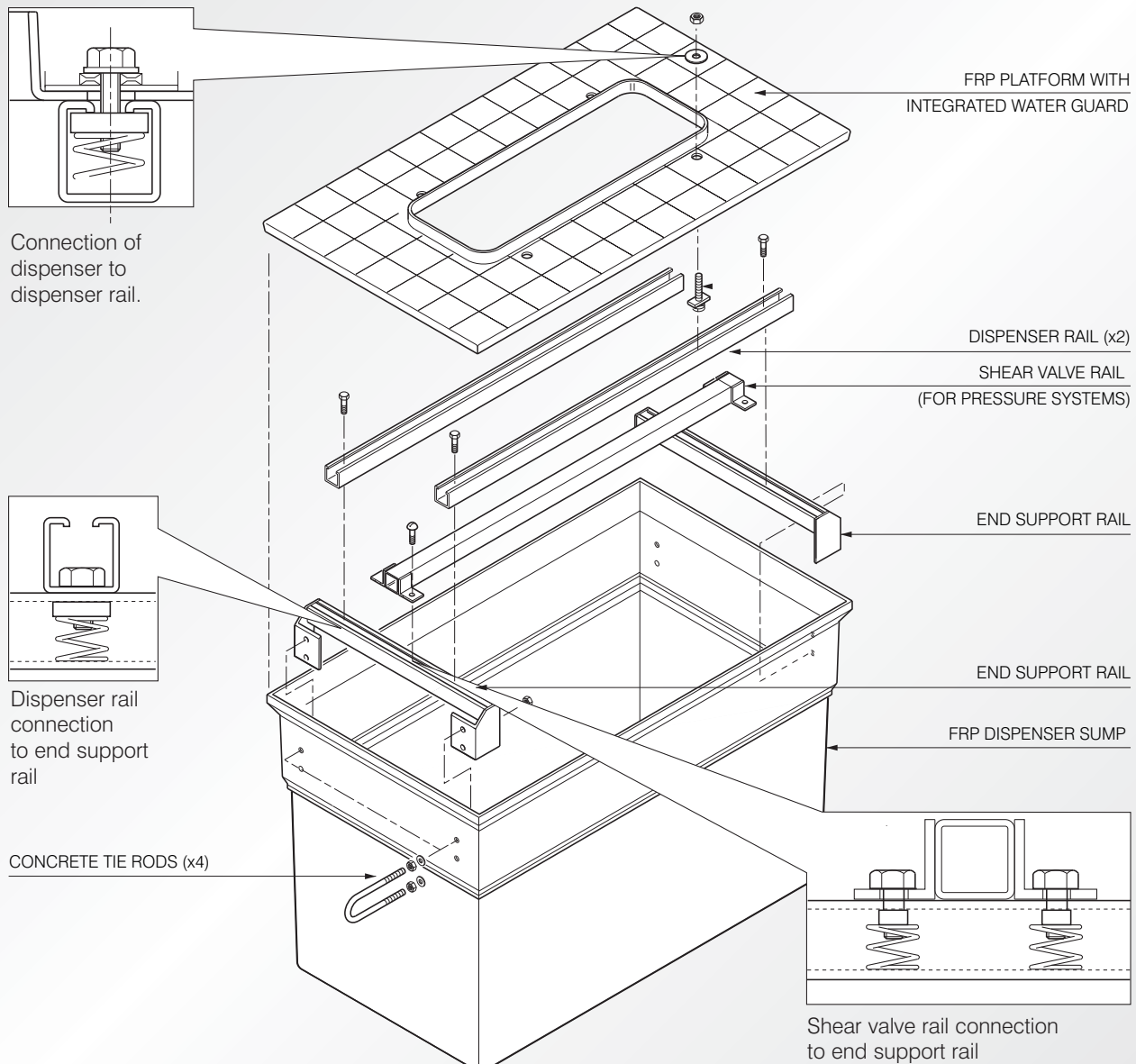
Please confirm dispenser model when ordering.



consistent structural integrity, long working life,
compromise

Retrofit System Component Order Codes

Product Code	Description
EL46-26/SUMP	46" x 26" x 30" high FRP sump
EL46-20/SUMP	46" x 26" x 20" high FRP sump
EL46-26/DWL	FRP liner for double wall system with test port, to fit EL46-26/DW
EL46-20/DWL	FRP liner for double wall system with test port, to fit EL46-20/DW
EL46-26/SVR/UNIT	Internal stainless steel fixing system, comprising of 1 shear valve rail, 2 dispenser rails, 2 end support brackets, 4 u-bolts & all fixings
MPK-10	Shear valve mounting plate kit, to fit OPW shear valves.
EL46-26/TOP/DW1	FRP top to fit Dresser Wayne models 41 $\frac{1}{2}$ " x 11"
EL46-26/TOP/DW2	FRP top to fit Dresser Wayne Ovation models 42 $\frac{1}{2}$ " x 14 $\frac{5}{8}$ "
EL46-26/TOP/G1	FRP top to fit Gilbarco Advantage models 41 $\frac{1}{4}$ " x 15 $\frac{1}{2}$ "
EL46-26/TOP/G2	FRP top to fit Gilbarco Encore models 36" x 17 $\frac{1}{8}$ "
EL46-26/TOP/G3	FRP top to fit Gilbarco MPD-3 models 35 $\frac{1}{2}$ " x 9 $\frac{1}{2}$ "

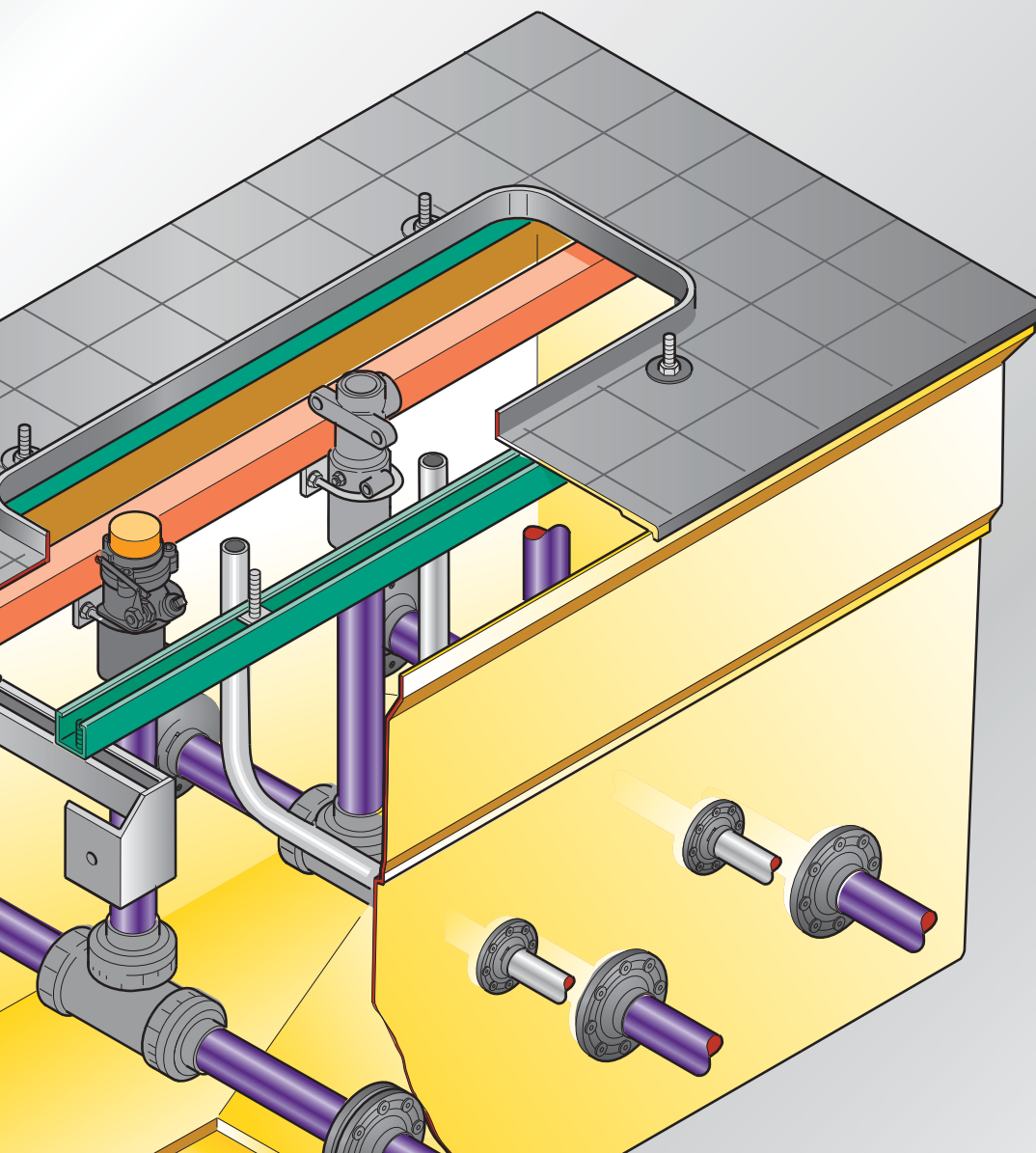




Fibretec
GROUP
COMPANY



FM 37923



FIBRELITE 
PART OF OPW A HUBER COMPANY

US Office:

3250 US Highway 70 Business West, Smithfield, NC 27577, USA

Tel: + 1 800 422 2525 Fax: +1 800 421 3297

E-mail: enquiries@fibrelite.com

UK Office:

Snaygill Industrial Estate, Keighley Road, Skipton, North Yorkshire, BD23 2QR, UK

Tel: +44 (0) 1756 794 963

E-mail: enquiries@fibrelite.com, Website: www.fibrelite.com