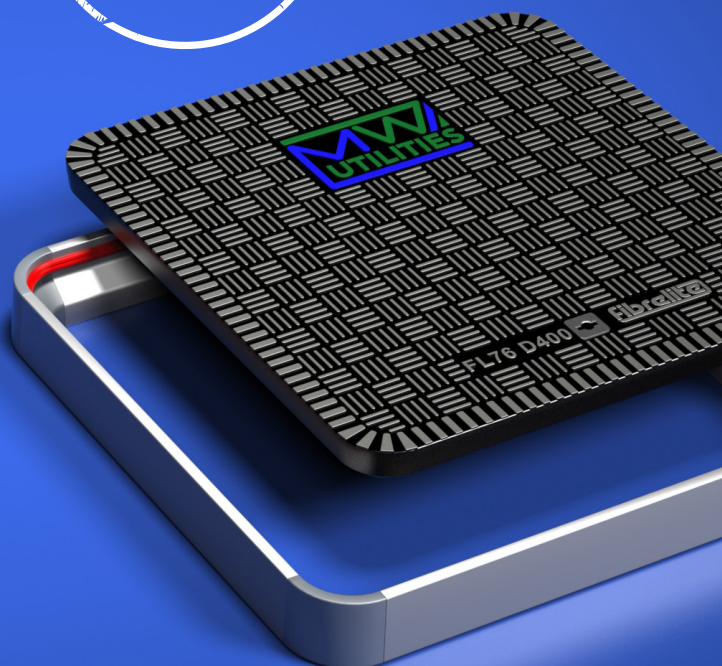
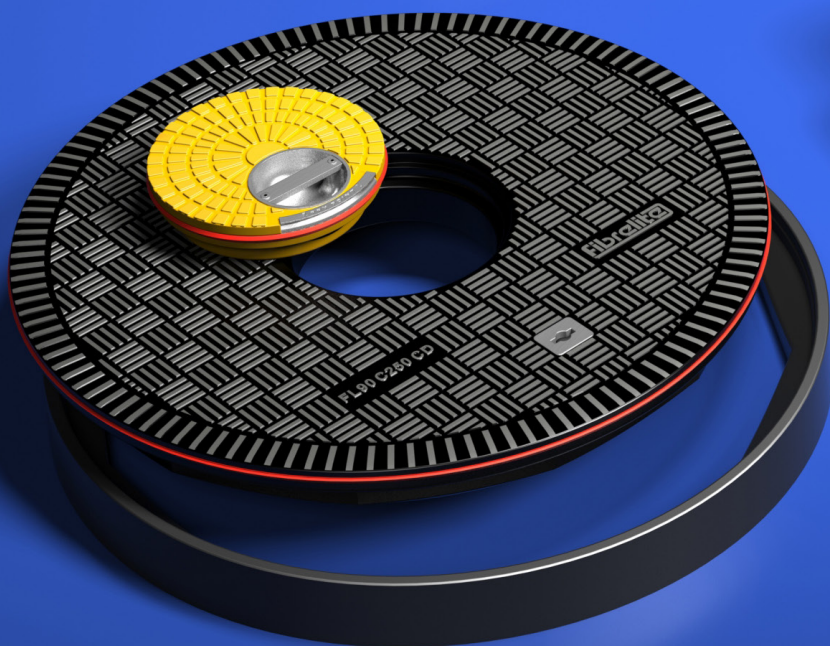


SAFE
ALTERNATIVE
TO METAL AND
CONCRETE



FRP Composite Access Covers

Lightweight for easy and safe manual removal,
without compromising on strength

RETAIL PETROLEUM
INDUSTRIAL COVERS
TRENCH COVERS
STEAM COVERS

FIBRELITE



We've got you covered

fibrelite.com

High quality lightweight composite access covers offering the best strength to weight ratio in the industry

At the forefront of quality and innovation

Every Fibrelite cover is manufactured using high-technology RTM production methods to create a highly engineered, monolithic composite product. Fibrelite has been at the forefront of fiber reinforced plastic (FRP) composite technology since 1980 and was the very first company to design and manufacture composite covers for any application. The aim was to solve the health and safety issues associated with the removal and replacement of traditional heavy metal covers. Fibrelite has established a global reputation for high quality products and superior after sales service. The company has held accreditation to both the ISO quality standard and British Standards Kitemark since 1998.

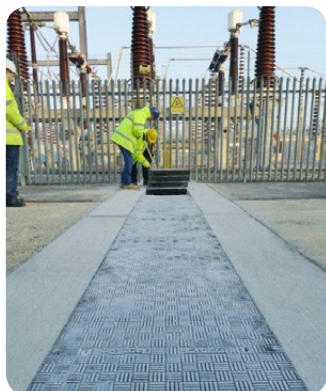
Today Fibrelite's high-performance, lightweight and safe-to-lift composite covers – including the unique 90 ton load-rated trench cover – are now selected by specifiers, architects and engineers worldwide.

For industrial applications

Suitable for all industries including energy and utilities, water and wastewater treatment, ports, docks, public works, arenas and stadiums, rail, retail and commercial developments. No other covering system matches its easy lift, skid resistant or load carrying properties.

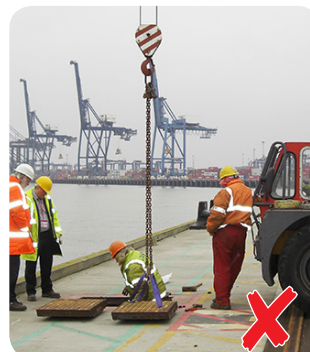
Lightweight, strong and safe

Fibrelite's composite covers are available with load ratings from super light duty to extreme heavy duty depending on the application. They are lightweight, strong, easily removable and available in a wide range of sizes, shapes and colors. The monolithic structure of a Fibrelite cover ensures that they will not crack or delaminate during usage.



Easy safe lifting and replacement

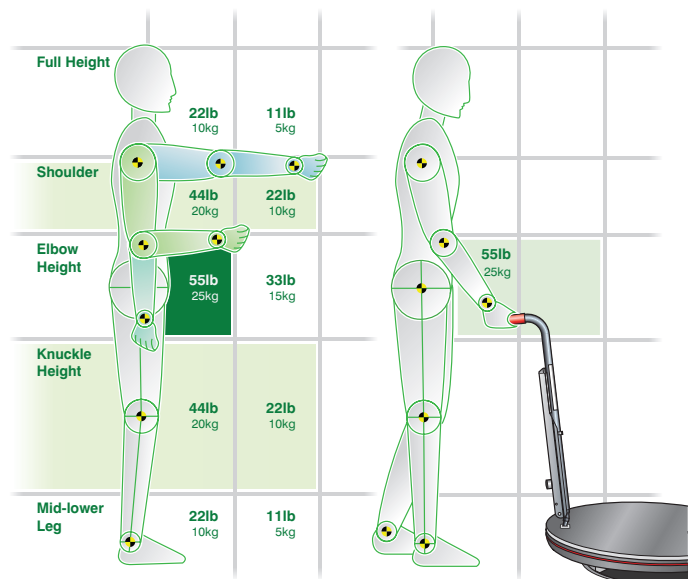
Fibrelite's composite access covers are proven to be ergonomically safe for men and women to remove and replace. The design incorporates up to two lifting points for our specially designed lifting handles. These allow the operator to remove the cover without trapping fingers or bending over thus maximising the safety of the lifting technique. The weight is kept close to the body preventing back injury; one of the main causes of absence from work and personal injury claims. The charts below show that the safest place to lift or pull a load is close to the body at waist height.



Heavy corroding steel covers requiring a crane & dedicated lifting equipment



Safe, fast, manual removal with Fibrelite lifting handles



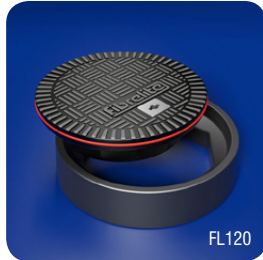
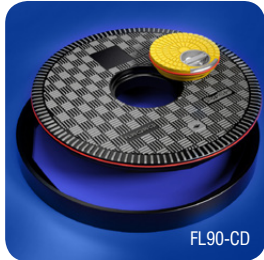
The Health and Safety Executive recommended load moving capabilities in relation to weight and position.

The Ergonomic representation of the Fibrelite lifting method (FL90).

Watertight flat sealed covers

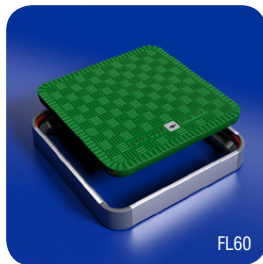
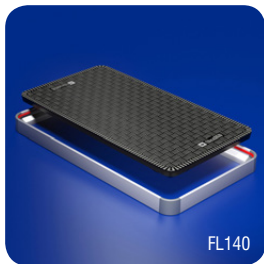
The leading watertight, easy to remove, composite access cover on the market is available in a range of sizes, load ratings and colors.

Also, available with centre and off set inspection port.



Round covers

Product code	Clear opening	Description
FL 100	40" dia.	Flat sealed cover and composite frame
FL 90	36" dia.	Flat sealed cover and composite frame
FL760	30" dia.	Flat sealed cover and composite frame
FL 600	24" dia.	Flat sealed cover and composite frame
FL 180	18" dia.	Flat sealed cover and composite frame
FL 120	12" dia.	Flat sealed cover and composite frame



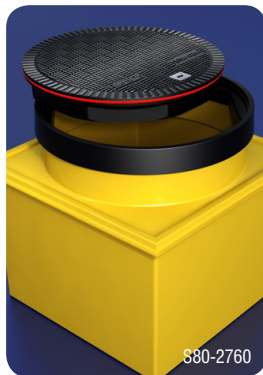
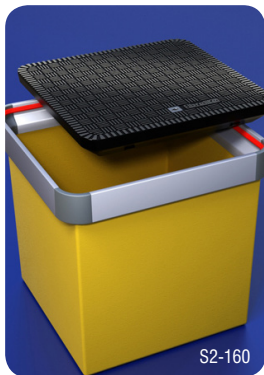
Square and rectangular covers

Product code	Clear opening	Description
FL140	55 x 28"	Flat sealed cover and aluminum frame
FL900	36 x 36"	Flat sealed cover and aluminum frame
FL96	36 x 24"	Flat sealed cover and aluminum frame
FL76	30 x 30"	Flat sealed cover and aluminum frame
FL60	24 x 24"	Flat sealed cover and aluminum frame
FL450	18 x 18"	Flat sealed cover and aluminum frame

Electrical drawpits/junction boxes

The electrical drawpit range offers a perfect watertight containment solution. There is a choice of either fixed height or adjustable height systems. The adjustable height system includes a skirt, which allows the frame to be set to grade level more easily during installation. All systems are completed at grade level with a Fibrelite watertight sealed cover.

Fixed height systems



Product code	Internal dimensions	Description
S1-1450	18 x 18 x 24"	FRP solid base sump with watertight flat sealed cover and frame
S2-160	24 x 24 x 24"	FRP solid base sump with watertight flat sealed cover and frame
S3-176	30 x 30 x 24"	FRP solid base sump with watertight flat sealed cover and frame
S4-176	30 x 30 x 30"	FRP solid base sump with watertight flat sealed cover and frame
S7SB-276	40 x 40 x 40"	FRP solid base sump with watertight flat sealed cover and frame
S80-2760	34 x 34 x 26"	FRP solid base sump with watertight flat sealed cover and frame

Adjustable height systems



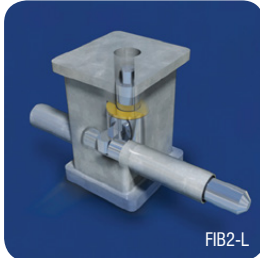
Product code	Internal dimensions	Description
S1-3450-SKIRT	18 x 18 x 24"	FRP solid base sump and skirt with watertight flat sealed cover and frame
S2-360-SKIRT	24 x 24 x 24"	FRP solid base sump and skirt with watertight flat sealed cover and frame
S3-376-SKIRT	30 x 30 x 24"	FRP solid base sump and skirt with watertight flat sealed cover and frame
S4-376-SKIRT	30 x 30 x 30"	FRP solid base sump and skirt with watertight flat sealed cover and frame

Cover/frame locks

Protects against theft.



FIB76-L



FIB2-L

Product code

FIB90-L

FIB76-L

Description

Frame mounted lock for use with all flat sealed round covers

Frame mounted lock for use with all flat sealed square and rectangular covers



FL-RL



FL-SL

FIB2-L

FL-RL

FL-SL

Cover encapsulated lock for use with with all flat sealed covers

Cover encapsulated lock for use with all flat sealed round covers

Cover encapsulated lock for use with all flat sealed square and rectangular covers



FL7A

For use with flat sealed covers



FL7

For use with trench covers

Lifting handles

Product code

FL7A

FL7

FL7A-ENCL

Description

To remove and replace all types of covers. Features a foot lever designed to break the seal on watertight flat sealed covers

To remove and replace raised covers and trench covers

910mm x 362mm x 100mm lockable cabinet to house two FL7A handles

Colored and personalized covers

Fibrelite covers are available in a range of colors to identify underground utilities or company logos.



Load ratings
from 3,400 to
202,000 lbs

Benefits in summary

- Load ratings from 1.5 tons to 90 tons
- H20/H25 load ratings available
- Perfect for access to drains, ducts and piping
- Maintenance-free, lightweight and durable monolithic structure which will not delaminate
- Corrosion-resistant: unaffected by water, underground gases and most chemicals
- Excellent insulator against heat
- Non-metallic, non-conductor and will not spark
- Treads incorporate an anti-slip material equivalent to modern high grade road
- Safe, easy-lift manual removal using the Fibrelite ergonomic lifting handle that eliminates the risk of back injury and crushed fingers or toes
- Locks available
- Covers can be molded in virtually any color or color combination that will not fade, flake or crack
- Logos or custom markings can be molded into the upper surface

Corrosion-resistant: Composite covers are an obvious choice where water, waste water or corrosive liquids are involved



Cost benefit summary

- A Fibrelite cover will be a one-time charge as it will not be stolen for scrap value
- Covers will not corrode or need to be painted
- No moving mechanical parts
- Very low maintenance
- Lightweight, zero risk of back/finger injuries (zero cost from employee insurance claims)
- Covers will not leave a dangerous open hole in the ground (zero cost from public injury claims)

Skid resistance (wet and dry)

A ceramic aggregate is incorporated into the cover surface during moulding. This aggregate gives the cover its unique antislip properties and high wear resistance characteristics.

Independent tests were carried out by Devon County Council Materials Laboratory. A ceramic aggregate (incorporated into the surface of the cover) combined with the specially designed tread pattern gave results showing the Fibrelite cover has antislip properties 'equivalent to a high grade road service'.

Fibrelite's excellent anti-slip/skid surface is guaranteed for the life of the panel providing a Polished Skid Resistance Value PSRV60> when wet which exceeds the requirements of HA 104/09, part 5, for potentially high risk sites.

Technical resources

Each product is fully supported with dimensional product drawings and installation instructions. To access this information please contact Fibrelite directly or log on to our website at www.fibrelite.com

Installation

Performance of Fibrelite trench covers is dependent on correct installation and installers must follow our product specific installation instructions. For unusual installations, please contact our technical department for advice.

Fibrelite's commitment

Fibrelite products are manufactured in the US, UK and Malaysia. Fibrelite ensures the strictest control on raw material quality and manufacturing standards. All products are manufactured in accordance with ISO9001:2008. ISO accreditation applies to the UK manufacturing plant.

Our global sales and support network

Fibrelite was established in 1980 and currently has three manufacturing plants around the world. Our sales office and manufacturing plant is located in Smithfield, North Carolina, which services North and South America. Our UK facility serves the UK, Europe, Middle East and Africa. Fibrelite's manufacturing plant in Malaysia supplies the Asia Pacific region. Fibrelite has an established global network of distributors to ensure a local Fibrelite representative is available wherever required. Details of your nearest distributor can be found on our website.



Customer testimonials

Theatre

"Overall I think Fibrelite is a great solution to a difficult design problem for us of achieving both a robust and high load capacity cover to the multicore cables running for stage to control desk whilst maintaining low weight and easy access."

Jonathan Size, Foster Wilson Architects



Hammersmith Apollo

Power Station

"We were looking for an installation to replace our ageing duct covers. Fibrelite came up with this solution and it is manufactured and sourced locally."

Paul Ellis, Eggborough Power Station



Eggborough Power Station

If you'd like to stay in touch with all that's happening at Fibrelite then join the conversation on our social media channels. You'll find us on LinkedIn, Twitter, Facebook, Youtube and Google Plus.



KM 40638



FM 37923

ISSUE: 22/03/2016

USA Office:

3250 US Highway 70 Business West
North Carolina
Smithfield
NC 27577
USA

Tel: +1 919 209 2404

Fax: +1 800 421 3297

E-mail: enquiries@fibrelite.com

UK Office:

Snaygill Industrial Estate
Keighley Road
Skipton
North Yorkshire
BD23 2QR
UK

Tel: +44 (0) 1756 794 963

E-mail: enquiries@fibrelite.com

Malaysia Office:

Lot P.T.27259,
Jalan Sigma U6/14,
Bukit Cherakah, Seksyen U6,
40150 Shah Alam,
Selangor Darul Ehsan

Tel: + 603-7847 1888

Fax: +603-7846 7788

E-mail: enquiries@fibrelite.com