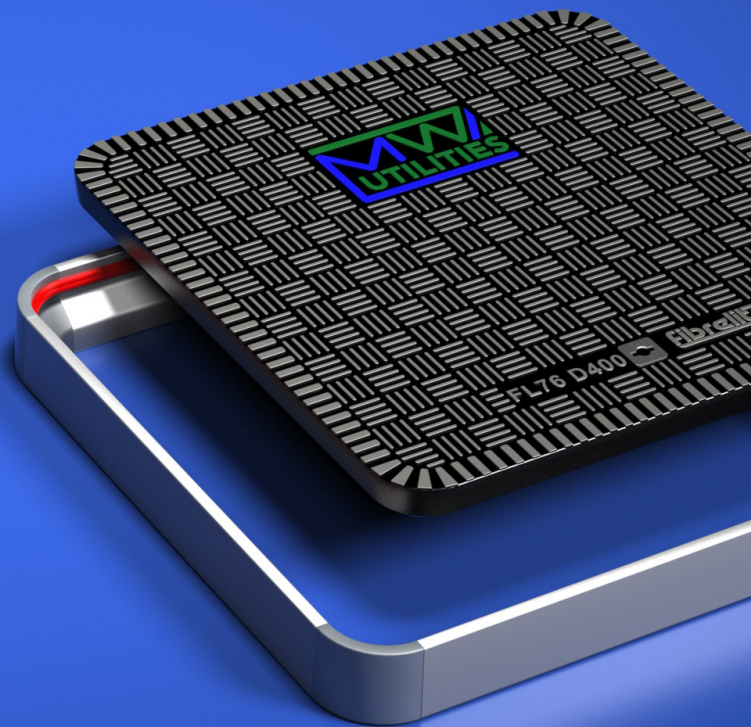
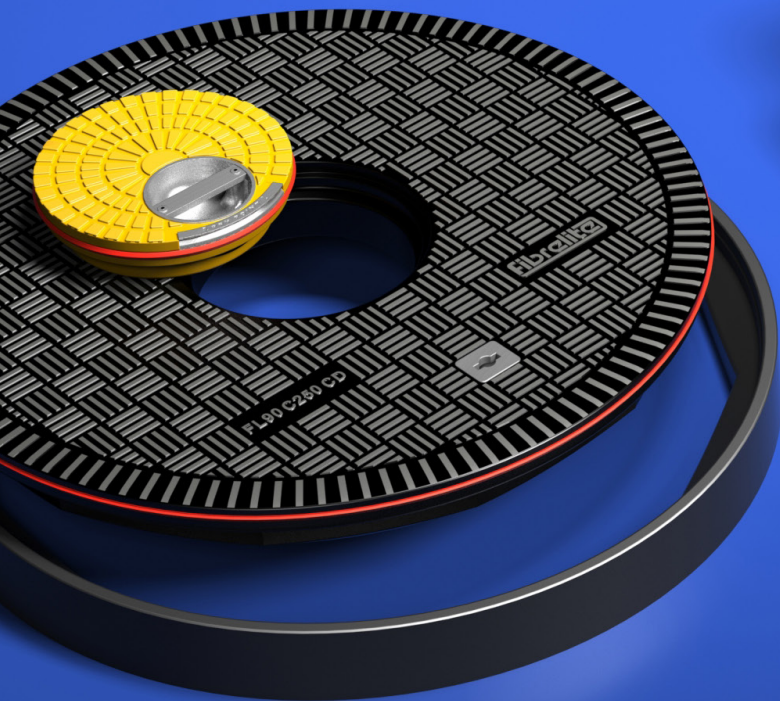


**SAFE**  
ALTERNATIVE  
TO METAL AND  
CONCRETE



## GRP Composite Access Covers

Lightweight for easy and safe manual removal, without compromising on strength

RETAIL PETROLEUM  
INDUSTRIAL COVERS  
TRENCH COVERS  
STEAM COVERS

# FIBRELITE

We've got you covered

# High quality lightweight composite access covers offering the best strength to weight ratio in the industry

## At the forefront of quality and innovation

Every Fibrelite cover is manufactured using high-technology RTM production methods to create a highly engineered, monolithic composite product. Fibrelite has been at the forefront of fibre reinforced plastic (GRP) composite technology since 1980 and was the very first company to design and manufacture composite covers for any application. The aim was to solve the health and safety issues associated with the removal and replacement of traditional heavy metal covers. Fibrelite has established a global reputation for high quality products and superior after sales service. The company has held accreditation to both the ISO quality standard and British Standards Kitemark since 1998.

Today Fibrelite's high-performance, lightweight and safe-to-lift composite covers – including the unique 90 tonne load-rated trench cover – are now selected by specifiers, architects and engineers worldwide.

## For industrial applications

Suitable for all industries including energy and utilities, water and wastewater treatment, ports, docks, public works, arenas and stadiums, rail, retail and commercial developments. No other covering system matches its easy lift, skid resistant or load carrying properties.

## Lightweight, strong and safe

Fibrelite's composite covers are available with load ratings from super light duty to extreme heavy duty depending on the application. They are lightweight, strong, easily removable and available in a wide range of sizes, shapes and colours. The patented monolithic structure of a Fibrelite cover ensures that they will not crack or delaminate during usage.



## Easy safe lifting and replacement

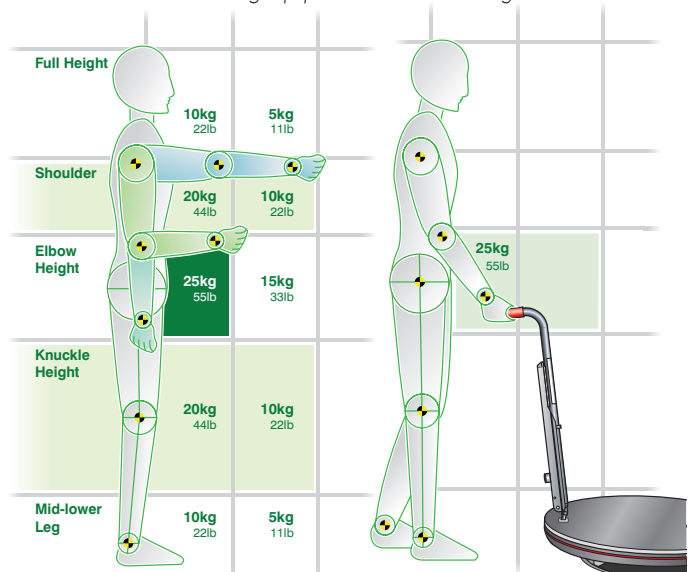
Fibrelite's composite access covers are proven to be ergonomically safe for men and women to remove and replace. The design incorporates up to two lifting points for our specially designed lifting handles. These allow the operator to remove the cover without trapping fingers or bending over thus maximising the safety of the lifting technique. The weight is kept close to the body preventing back injury; one of the main causes of absence from work and personal injury claims. The charts below show that the safest place to lift or pull a load is close to the body at waist height.



Heavy corroding steel covers requiring a crane & dedicated lifting equipment



Safe, fast, manual removal with Fibrelite lifting handles

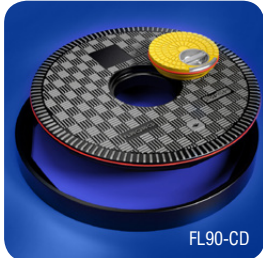


The Health and Safety Executive recommended load moving capabilities in relation to weight and position

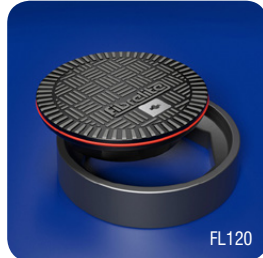
The Ergonomic representation of the Fibrelite lifting method (FL90)

## Watertight flat sealed covers

The leading watertight, easy to remove, composite access cover on the market is available in a range of sizes, load ratings and colours. Also, available with centre and off set inspection port.



FL90-CD



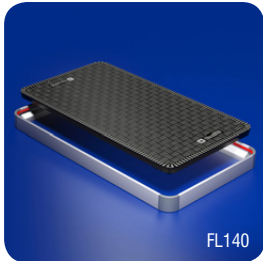
FL120

### Round covers

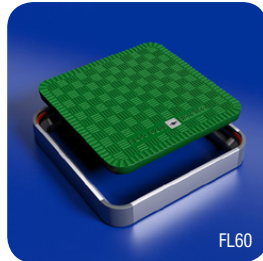
#### Product code Clear opening

FL100	1020mm dia.	Flat sealed cover and composite frame
FL90	900mm dia.	Flat sealed cover and composite frame
FL760	760mm dia.	Flat sealed cover and composite frame
FL600	610mm dia.	Flat sealed cover and composite frame
FL180	457mm dia.	Flat sealed cover and composite frame
FL120	300mm dia.	Flat sealed cover and composite frame

#### Description



FL140



FL60

### Square and rectangular covers

#### Product code Clear opening

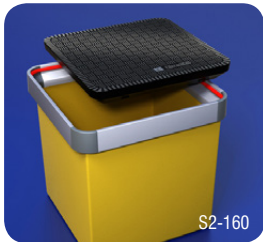
FL140	1400 x 700mm	Flat sealed cover and aluminium frame
FL900	900 x 900mm	Flat sealed cover and aluminium frame
FL96	900 x 600mm	Flat sealed cover and aluminium frame
FL76	760 x 760mm	Flat sealed cover and aluminium frame
FL60	600 x 600mm	Flat sealed cover and aluminium frame
FL450	450 x 450mm	Flat sealed cover and aluminium frame

#### Description

## Electrical drawpits/junction boxes

The electrical drawpit range offers a perfect watertight containment solution. There is a choice of either fixed height or adjustable height systems. The adjustable height system includes a skirt, which allows the frame to be set to grade level more easily during installation. All systems are completed at grade level with a Fibrelite watertight sealed cover.

### Fixed height systems



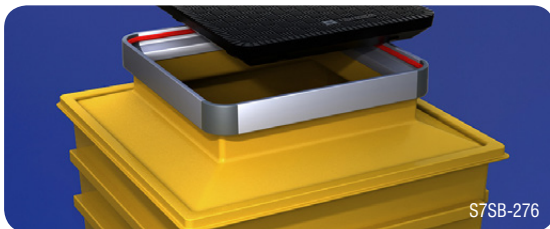
S2-160



S80-2760

#### Product code Internal dimensions Description

S1-1450	450 x 450 x 600mm	GRP base sump with watertight flat sealed cover and frame
S2-160	600 x 600 x 600mm	GRP solid base sump with watertight flat sealed cover and frame
S3-176	760 x 760 x 600mm	GRP solid base sump with watertight flat sealed cover and frame
S4-176	760 x 760 x 760mm	GRP solid base sump with watertight flat sealed cover and frame
S7SB-276	1200 x 1200 x 1200mm	GRP solid base sump with watertight flat sealed cover and frame
S80-2760	862 x 862 x 675mm	GRP solid base sump with watertight flat sealed cover and frame



S7SB-276

### Adjustable height systems



S1-3140-SKIRT



S4-376-SKIRT

#### Product code Internal dimensions Description

S1-3450-SKIRT	450 x 450 x 600mm	GRP solid base sump and skirt with watertight flat sealed cover and frame
S2-360-SKIRT	600 x 600 x 600mm	GRP solid base sump and skirt with watertight flat sealed cover and frame
S3-376-SKIRT	760 x 760 x 600mm	GRP solid base sump and skirt with watertight flat sealed cover and frame
S4-376-SKIRT	760 x 760 x 760mm	GRP solid base sump and skirt with watertight flat sealed cover and frame

## Cover/frame locks

Protects against theft.



### Product code

FIB90-L

FIB76-L

### Description

Frame mounted lock for use with all flat sealed round covers

Frame mounted lock for use with all flat sealed square and rectangular covers



FIB2-L

FL-RL

FL-SL

Cover encapsulated lock for use with with all flat sealed covers

Cover encapsulated lock for use with all flat sealed round covers

Cover encapsulated lock for use with all flat sealed square and rectangular covers



## Lifting handles

### Product code

FL7A

FL7

FL7A-ENCL

### Description

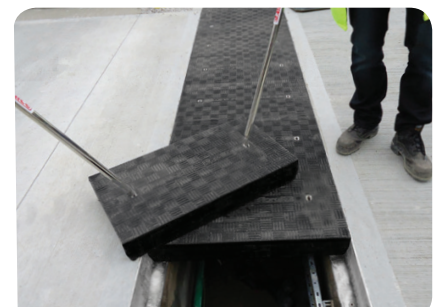
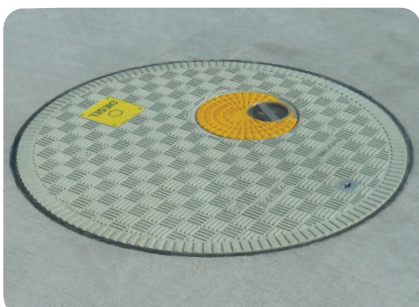
To remove and replace all types of covers. Features a foot lever designed to break the seal on watertight flat sealed covers

To remove and replace raised covers and trench covers

910mm x 362mm x 100mm lockable cabinet to house two FL7A lifting handles

## Coloured and personalised covers

Fibrelite covers can incorporate logos and/or be colour-coded to match a facility's branding, or even to identify the specific underground service that can be accessed via a particular cover



**Load ratings  
 from 1.5  
 to 90 tonnes**

## Benefits in summary

- Load ratings from A15 to F900 (BS EN 124)
- Wide range of sizes, colours and shapes
- Unaffected by underground gases and most chemicals
- Will not corrode, crack or crumble
- Sealed manhole covers are water and odour tight
- Excellent insulator against heat
- Easy and safe manual removal
- Lifting aid eliminates back injury and crushed fingers
- Eliminates risk of theft due to no resale value to the scrap market
- Incredibly strong monolithic structure that will not delaminate
- Treads incorporate a specialised anti-slip material
- Perfect for access to drains, electrical ducts and underground pipework
- Range of UV stable colours available that will not flake or crack
- Security locks available
- Cover marking / customisation available
- Conductive and non-conductive options available

**Corrosion-resistant: Composite covers are an obvious choice where water, waste water or corrosive liquids are involved**



### Cost benefit summary

- A Fibrelite cover will be a one-time charge as it will not be stolen for scrap value
- Covers will not corrode or need to be painted
- No moving mechanical parts
- Very low maintenance
- Lightweight, zero risk of back/finger injuries (zero cost from employee insurance claims)
- Covers will not leave a dangerous open hole in the ground (zero cost from public injury claims)

### BS EN 124

Fibrelite's covers comply with the load test requirement of BS EN 124: 1994, classes C250 and D400.

### Skid resistance (wet and dry)

A ceramic aggregate is incorporated into the cover surface during moulding. This aggregate gives the cover its unique antislip properties and high wear resistance characteristics.

Independent tests were carried out by Devon County Council Materials Laboratory. A ceramic aggregate (incorporated into the surface of the cover) combined with the specially designed tread pattern gave results showing the Fibrelite cover has antislip properties 'equivalent to a high grade road surface'.

Fibrelite's excellent anti-slip/skid surface is guaranteed for the life of the panel providing a Polished Skid Resistance Value PSRV60> when wet which exceeds the requirements of HA 104/09, part 5, for potentially high risk sites.

## Technical resources

Each product is fully supported with dimensional product drawings and installation instructions. To access this information please contact Fibrelite directly or log on to our website at [www.fibrelite.com](http://www.fibrelite.com)

## Installation

Performance of Fibrelite's access covers is dependent on correct installation and installers must follow our product specific instructions. For unusual installations, please contact our technical department for advice.

## Fibrelite's commitment

Fibrelite's FL76 and FL90 covers have been accredited with the BSI Kitemark. This is your assurance that our products are regularly subjected to rigorous, independent testing to ensure that they comply with stringent standards for safety, product performance and reliability. In addition, the Kitemark also means that the quality systems of the factory where Fibrelite covers are made are systematically assessed. The Kitemark is therefore Fibrelite's commitment towards maintaining the highest possible standards.

Fibrelite products are manufactured in the UK, US and Malaysia. Fibrelite ensures the strictest control on raw material quality and manufacturing standards. All products are manufactured in accordance with ISO9001:2008. ISO accreditation applies to the UK manufacturing plant.

## Our global sales and support network

Fibrelite was established in 1980 and currently has three manufacturing plants around the world. Our head office and main manufacturing plant is located in England and serves the UK, Europe, Middle East and Africa. America and Canada are serviced by our US plant and sales office based in Smithfield. In 2011, Fibrelite opened a new manufacturing plant in Malaysia to supply products to the Asia Pacific region. Fibrelite has an established global network of distributors to ensure a local Fibrelite representative is available wherever required. Details of your nearest distributor can be found on our website.

## Customer testimonials

### Theatre

*"Overall I think Fibrelite is a great solution to a difficult design problem for us of achieving both a robust and high load capacity cover to the multicore cables running for stage to control desk whilst maintaining low weight and easy access."*

Jonathan Size, Foster Wilson Architects



Hammersmith Apollo

### Power Station

*"We were looking for an installation to replace our ageing duct covers. Fibrelite came up with this solution and it is manufactured and sourced locally."*

Paul Ellis, Eggborough Power Station



Eggborough Power Station

If you'd like to stay in touch with all that's happening at Fibrelite then join the conversation on our social media channels. You'll find us on LinkedIn, Twitter, Facebook, Youtube and Google Plus.



KM 40638



FM 37923

ISSUE: 18/02/2020

### UK Office:

Snaygill Industrial Estate  
Keighley Road  
Skipton  
North Yorkshire  
BD23 2QR  
UK  
**Tel:** +44 (0) 1756 794 963  
**E-mail:** [enquiries@fibrelite.com](mailto:enquiries@fibrelite.com)

### USA Office:

3250 US Highway 70 Business West  
North Carolina  
Smithfield  
NC 27577  
USA  
**Tel:** +1 919 209 2404  
**Fax:** +1 800 421 3297  
**E-mail:** [enquiries@fibrelite.com](mailto:enquiries@fibrelite.com)

### Malaysia Office:

Lot P.T.27259,  
Jalan Sigma U6/14,  
Bukit Chera, Seksyen U6,  
40150 Shah Alam,  
Selangor Darul Ehsan  
**Tel:** + 603-7847 1888  
**Fax:** +603-7846 7788  
**E-mail:** [enquiries@fibrelite.com](mailto:enquiries@fibrelite.com)