

Radio Frequency Friendly Manhole Covers

What We Have Developed

Some years ago, we recognised a gap in the market for manhole covers that could effectively facilitate applications in which data transfer from equipment within below ground networks to above ground antennae and data receivers was required. We had surmised this to be another great potential USP of our GRP covers over Ductile Iron and Reinforced Concrete.

What The Application/Concept Is And Potential Usage

The recently developed covers can be used in areas where signals need to be transmitted through the covers and the signal is strong enough to sustain data transfer. One application is to allow water meter readings to be automatically transmitted from within the cover to an aboveground receiver allowing for remote, real-time data collection (rather than collecting this information manually).

Potential Usage

We estimate that covers which can perform in this way may soon be of significant interest to many customers worldwide. These results have the potential to make our covers an ideal solution for many different applications, including those in which oil monitoring systems, water meter systems and 5G enabled small antennae signal boosters may be in operation.

Who We Have Supplied It To And For What Application

US Water Utility company Utilising SmartPoint 520m Module (A Sensus Product). See below link to referenced case study:

<https://fibrelite.com/portfolio/water-company-connecticut-usa>



FL90CD With Embedded RF Antenna



Radio Frequency Friendly Cover Installed by US Water Utility Company

Trench Cover Cable Access

What We Have Developed

In many instances, a client will request for us to provide a covering arrangement which allows temporary cable access from within the service trench to an above ground facility without the removal of the trench covers itself. Typically these are used in sports stadia, exhibition and conference centres for power services, lighting and digital signage.

What The Application/Concept Is And Potential Usage

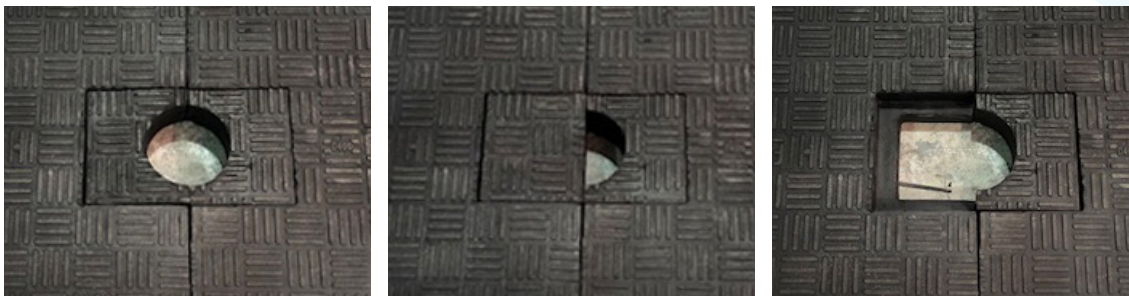
This can often be an essential requirement as a means of creating a continuous functioning power supply to an above ground component, or group of components.

The cable access design of the plug means that the trench cover can remain in situ and the service cabling can be located exactly where required, it also prevent open trenches into which objects and debris could potentially fall.

The half-moon design also allows for the plug to be removed and replaced easily without removal of the linear trench run of covers.

We Have Supplied It To And For What Application

This design was incorporated to strategically positioned pitch-side trench covers supplied to a National Sports Stadium last year.



Service Trench Cable Inserts

What We Have Developed

Similarly to the half-moon plug, trench cable inserts are incorporated into some covering arrangements at the request of the client to facilitate electrical cabling protruding out of trench. However, this variant of the half-moon plug will cover the aperture in its entirety meaning that none of the trench is exposed when it is in place.

What The Application/Concept Is And Potential Usage

In designs such as these - it is often the case that the electrical cabling is not required to be connected to above ground systems at all times, when not in use it will be placed back inside the trench.

Who We Have Supplied It To And For What Application

Previous projects we have supplied this for include a National Sports Stadium.



Recessed Trench Covers

What We Have Developed

Recessed trench covers are designed specifically for applications in which the customer may wish to retain the surface texture/material of the surrounding terrain.

What The Application/Concept Is And Potential Usage

We offer a recessed cover to accommodate the bedding and top layer, which tend to be with paving flags, block paving or textured surfaces. Of course, we have some restrictions as this greatly increases the unit weight of the cover.

Who We Have Supplied It To And For What Application

Previously supplied to University of Nottingham, Portland Hill Central - Gravel Resin Covers



Ventilated Trench Covers

What We Have Developed

Bespoke 'ventilated' trench covers with moulded apertures for instrument penetration.

What The Application/Concept Is And Potential Usage

These apertures allow for service pipes to connect, unobstructed by our covers – to above ground networks. This is useful for a variety of industrial applications.

Who We Have Supplied It To And For What Application

We have supplied this design previously to KHK for various projects



New Product Development Announcement

July 2019

EL-46-38 Dispenser Sump

What We Have Developed

EL-46-38 Dispenser Sump - MEOS Common Model for the Helix and Horizon.

What The Application/Concept Is And Potential Usage

Retail Fuelling – one of the latest developments in our fuel dispenser range, these units provide a strong, hard-wearing, liquid-tight containment solution that will last for the lifetime of the site. Unlike polyethylene, GRP will not deflect under ground water pressure.

Who We Have Supplied It To And For What Application

MES/ENOC



Trench Cover Inspection Ports (Lockable)

What We Have Developed

We have designed inspection hatch covers with trench arrangements for certain customers on request.

What The Application/Concept Is And Potential Usage

Inspection ports are particularly useful to clients who require frequent access to services within a trench in order to take quick readings of instruments beneath. Water treatment facilities are an industry in which we see some frequent demand for this product.

Further to this, we have also designed a roto locking system to prevent unauthorised access and meet mandated health and safety protocol.

Who We Have Supplied It To And For What Application

KHK are a frequent purchaser of this product for industrial applications.



New Product Development Announcement

July 2019

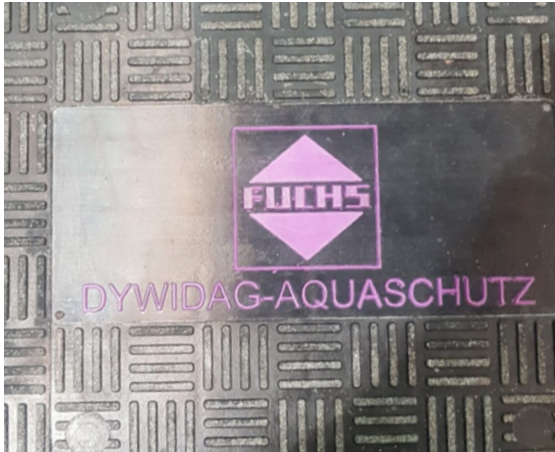
Services/Customer ID Cover Logo Mouldings

What We Have Developed

A wide range of applications and many sectors will make use of this customisable feature in order to advertise their own brand or to convey important health & safety information.

What The Application/Concept Is And Potential Usage, Who We Have Supplied It To And For What Application

We have supplied this to many customers installing for a wide range of applications in both Retail Fuelling and C&I.



For More Information On Any Of Our New Products, Please Contact Our Technical Director David Holmes On +44 (0) 1756 799 773 or enquiries@fibrelite.com