



Pipe and Cable Entry Kits

RETAIL FUELING
INDUSTRIAL COVERS
TRENCH COVERS
STEAM COVERS

FIBRELITE

We've got you covered

fibrelite.com

One Superior Standard - Providing Perfect Watertight Sealing of Cable Penetrations and Pipe Work

Primary Pipe Entry Sealkits

The unique design allows a single hole installation. No additional screw holes need to be drilled. This provides the installer with a quick and easy installation and minimises potential leak paths through the sump wall. Our single sided and double sided entry sealkits will fit all types of primary pipework on the market. All sealkits are resistant to hydrocarbons and biofuels. For fill chamber system installations, where the entry boot will come into contact with biofuels E15 and B15 or higher, Fibrelite has you covered. Our Viton sealkit range is specifically designed to cope with such aggressive fuel types with ease. To order Viton models, simply add '-V' at the end of the code. Example PSB-50-V.

Single-sided Pipe Entry Sealkits

Product Code	Description	Pipe O/D (mm)	Flange Ring O/D (mm)	Hole Size (mm)
PSB-40	To fit 40mm pipe	35 - 43	190	150
PSB-54	To fit 54mm pipe	49 - 57	190	150
PSB-50	To fit 50mm pipe	45 - 53	190	150
PSB-63	To fit 63mm pipe	57 - 66	190	150
PSB-75	To fit 75mm pipe	68 - 79	190	150
PSB-90	To fit 90mm pipe	81 - 95	190	150
PSB-110	To fit 110mm pipe	99 - 115	190	150
PSB-125	To fit 125mm pipe	112 - 131	240	190
PSB-140	To fit 140mm pipe	126 - 147	240	190
PSB-160	To fit 160mm pipe	153 - 162	240	190

Double-sided Pipe Entry Sealkits

Product Code	Description	Pipe O/D (mm)	Flange Ring O/D (mm)	Hole Size (mm)
PSBD-40	To fit 40mm pipe	35 - 43	190	150
PSBD-54	To fit 54mm pipe	49 - 57	190	150
PSBD-50	To fit 50mm pipe	45 - 53	190	150
PSBD-63	To fit 63mm pipe	57 - 66	190	150
PSBD-75	To fit 75mm pipe	68 - 79	190	150
PSBD-90	To fit 90mm pipe	81 - 95	190	150
PSBD-110	To fit 110mm pipe	99 - 115	190	150
PSBD-125	To fit 125mm pipe	112 - 131	240	190
PSBD-140	To fit 140mm pipe	126 - 147	240	190
PSBD-160	To fit 160mm pipe	153 - 162	240	190



Vent Transition Sump Entry Sealkits

Vent riser entry boots have a rounded profile to encourage rainwater run-off and are made from a UV resistant rubber. We recommend the installation of the VT-CAP to give added protection against UV in sunny climates.

Product Code	Description	Pipe O/D (mm)	Flange Ring O/D (mm)	Hole Size (mm)
PSB-63-VT	to fit 63mm (2") dia. vent riser	57 - 66	190	150
VT-CAP-63	UV protective cap, fits PSB-63-VT			
PSB-90-VT	to fit 90mm (3") dia. vent riser	68 - 79	190	150
VT-CAP-90	UV protective cap, fits PSB-90-VT			



Entry Sealkits for Retractable Pipework Systems

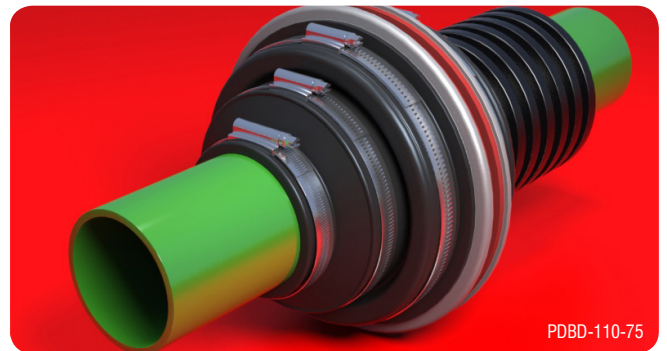
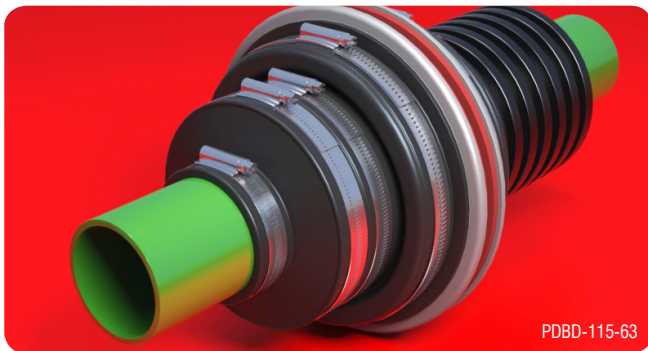
Our new range of entry sealkits are designed to seal between the outer duct and the secondary contained or primary pipe. The fitting is supplied with a Schrader valve to allow pressure testing and/or permanent monitoring of the interstitial space. All sealkits are resistant to hydrocarbons and biofuels. Fibrelite recommends our Viton range for biofuels E15 and B15 or higher. To order Viton models, simply add '-V' at the end of the code. Example PDBD-115-63-V.

OPW Pipework Entry Sealkits

Product Code	Description	Duct O/D (mm)	Pipe O/D (mm)	Flange Ring O/D (mm)	Hole Size (mm)
PDBD-115-63	To seal between 115mm duct and 63mm (2") OPW Pipe	115	63	190	150
PDBD-115-50	To seal between 115mm duct and 50mm (1 1/2") OPW Pipe	115	50	190	150

UPP Pipework Entry Sealkits

Product Code	Description	Duct O/D (mm)	Pipe O/D (mm)	Flange Ring O/D (mm)	Hole Size (mm)
PDBD-110-75	To seal between 110mm duct and 75mm UPP Pipe	110	75	190	150



Cable Entry Sealkits

Our PCE range of sealkits are designed to fit 110mm (4") dia. duct. The unique one hole design makes it quick and easy to install and removes potential leak paths from additional screw holes. All sealkits are resistant to hydrocarbons and biofuels.

Product Code	Description	No. of Cables	Cable Size (mm)	Flange Ring O/D (mm)	Hole Size (mm)
PCE-1	Duct seal with 4 compression seals.	1 - 4	9 - 20	190	150
	Designed to fit inside a PSB-110 entry kit (not included). Will seal up to 12 cables.	1 - 12	5 - 8		
PCE-1-KIT	PCE-1 complete with PSB-110 sealkit (to seal 110mm duct).	1 - 4	9 - 20	190	150
		1 - 12	5 - 8		
PCE-2	110mm rubber cable entry boot to seal up to 16 cables. Includes 16 cable ties.	1 - 16	5 - 20	190	150

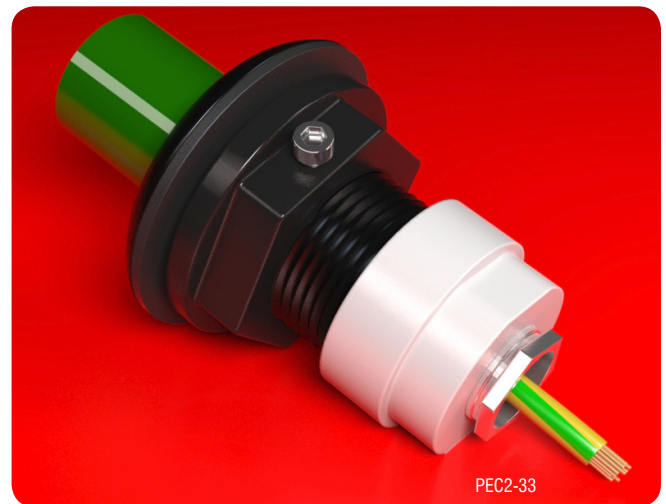


Conduit Entry Sealkits

The PEC range of screw type fitting enables a quick and easy installation. Drill only one hole in the sump wall. Screw components together and tighten 1 locking screw.

All sealkits are resistant to hydrocarbons and biofuels.

Product Code	Description	Suitable for	Size	Flange Ring O/D (mm)	Hole Size (mm)
PEC-25	Suitable for 25mm conduit	1 Conduit	25mm	75	44
PEC-27	Suitable for 3/4" steel conduit	1 Conduit	3/4"	85	51
PEC-32	Suitable for 32mm conduit	1 Conduit	32mm	85	51
PEC-33	Suitable for 1" steel conduit	1 Conduit	1"	90	60
PEC-50	Suitable for 1 1/2" steel conduit or 50mm pipe	1 Conduit 1 Pipe	1 1/2" 50mm	95	73
PEC2-33	Grounding cable seal to fit 1" steel conduit	1 Cable 3 Cables	9 - 20mm 5 - 8mm	90	60
PEC2-50	Grounding cable seal to fit 1 1/2" steel conduit or 50mm dia. plastic pipe	1 Cable 3 Cables 1 Pipe	9 - 20mm 5 - 8mm 50mm	95	73



If you'd like to stay in touch with all that's happening at Fibrelite then join the conversation on our social media channels. You'll find us on LinkedIn, Twitter, Facebook, Youtube and Google Plus.



ISSUE: 18/02/2020

UK Office:

Snaygill Industrial Estate
Keighley Road
Skipton
North Yorkshire
BD23 2QR
UK

Tel: +44 (0) 1756 794 963

E-mail: enquiries@fibrelite.com

USA Office:

3250 US Highway 70 Business West
North Carolina
Smithfield
NC 27577
USA

Tel: +1 919 209 2404

Fax: +1 800 421 3297

E-mail: enquiries@fibrelite.com

Malaysia Office:

Lot P.T.27259,
Jalan Sigma U6/14,
Bukit Chera, Seksyen U6,
40150 Shah Alam,
Selangor Darul Ehsan

Tel: + 603-7847 1888

Fax: +603-7846 7788

E-mail: enquiries@fibrelite.com