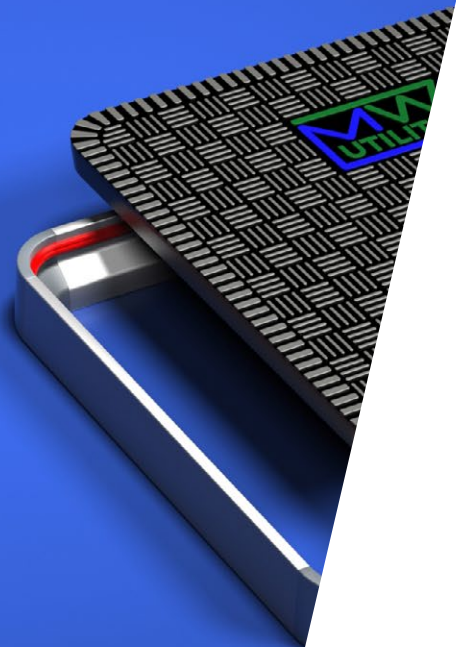
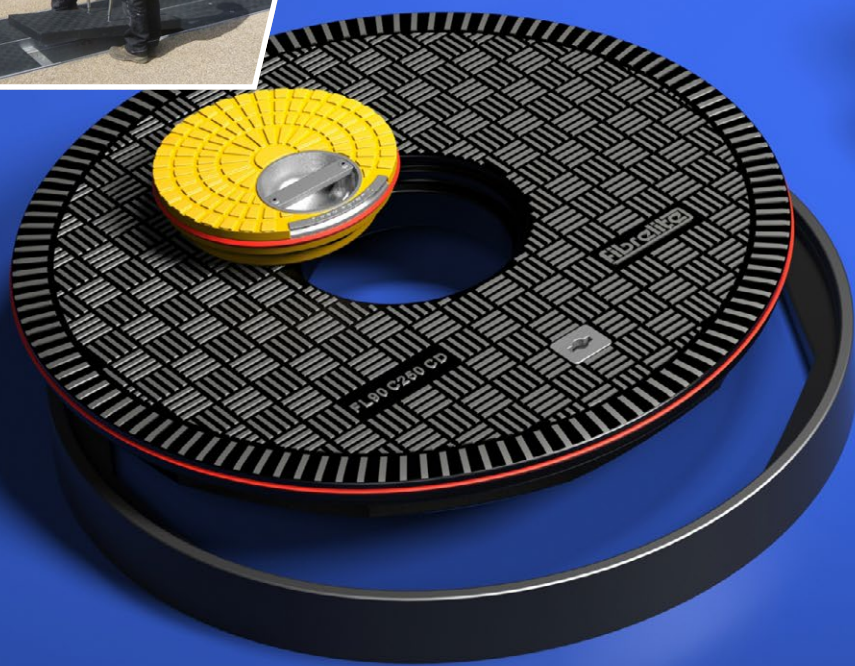


SAFE
ALTERNATIVE
TO METAL AND
CONCRETE



GRP Composite Access Covers & Electrical Drawpits/Junction Boxes

FIBRELITE 

PART OF OPW a **DOVER** company

RETAIL FUELLING
INDUSTRIAL
TRENCH
STEAM

Load ratings
from 1.5 to
90 tonnes

Benefits in Summary

- Load ratings from A15 to F900 (BS EN 124)
- Wide range of sizes, colours and shapes
- Unaffected by underground gases and most chemicals
- Will not corrode, crack or crumble
- Sealed manhole covers are water and odour tight
- Excellent insulator against heat
- Easy and safe manual removal
- Lifting aid eliminates back injury and crushed fingers
- Eliminates risk of theft due to no resale value to the scrap market
- Incredibly strong monolithic structure that will not delaminate
- Treads incorporate a specialised anti-slip material
- Perfect for access to drains, electrical ducts and underground pipework
- Range of UV stable colours available that will not flake or crack
- Security locks available
- Cover marking / customisation available
- Conductive and non-conductive options available

Corrosion-resistant: Composite covers are an obvious choice where water, waste water or corrosive liquids are involved



Cost Benefit Summary

- A Fibrelite cover will be a one-time charge as it will not be stolen for scrap value
- Covers will not corrode or need to be painted
- No moving mechanical parts
- Very low maintenance
- Lightweight, zero risk of back/finger injuries (zero cost from employee insurance claims)
- Covers will not leave a dangerous open hole in the ground (zero cost from public injury claims)

BS EN 124

Fibrelite's covers comply with the load test requirement of BS EN 124, classes C250 and D400.

Skid Resistance (wet and dry)

A ceramic aggregate is incorporated into the cover surface during moulding. This aggregate gives the cover its unique antislip properties and high wear resistance characteristics.

Independent tests were carried out by Devon County Council Materials Laboratory. A ceramic aggregate (incorporated into the surface of the cover) combined with the specially designed tread pattern gave results showing the Fibrelite cover has antislip properties 'equivalent to a high grade road surface'.

Fibrelite's excellent anti-slip/skid surface is guaranteed for the life of the panel providing a Polished Skid Resistance Value PSRV60> when wet which exceeds the requirements of HA 104/09, part 5, for potentially high risk sites.

High quality lightweight composite access covers offering the best strength to weight ratio in the industry

At the Forefront of Quality & Innovation

Every Fibrelite cover is manufactured using high-technology RTM production methods to create a highly engineered, monolithic composite product. Fibrelite has been at the forefront of reinforced plastic (GRP) composite technology since 1980 and was the very first company to design and manufacture composite covers for any application. The aim was to solve the health and safety issues associated with the removal and replacement of traditional heavy metal covers. Fibrelite has established a global reputation for high quality products and superior after sales service. The company has held accreditation to both the ISO quality standard and British Standards Kitemark since 1998.

Today Fibrelite's high-performance, lightweight and safe-to-lift composite covers – including the unique 90 tonne load-rated trench cover – are now selected by specifiers, architects and engineers worldwide.

For Industrial Applications

Suitable for all industries including ports and airports, petrol stations and forecourts (where they're the industry standard), power stations and substations, precast concrete trench systems, data centres, stadiums and leisure, military and defence, radio frequency applications, manufacturing facilities, rail and underground, roadside and access roads, public areas steam heating covers and shopping centres and retail parks. No other covering system matches their easy lift, skid resistant, load bearing properties.

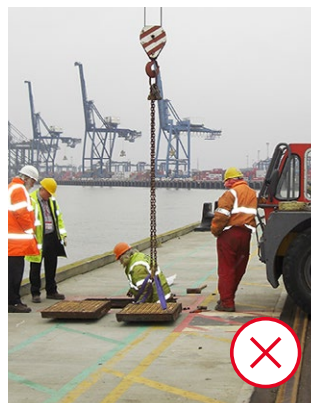
Lightweight, Strong & Safe

Fibrelite's composite covers are available with load ratings from super light duty to extreme heavy duty depending on the application. They are lightweight, strong, easily removable and available in a wide range of sizes, shapes and colours. The patented monolithic structure of a Fibrelite cover ensures that they will not crack or delaminate during usage.



Easy Safe Lifting & Replacement

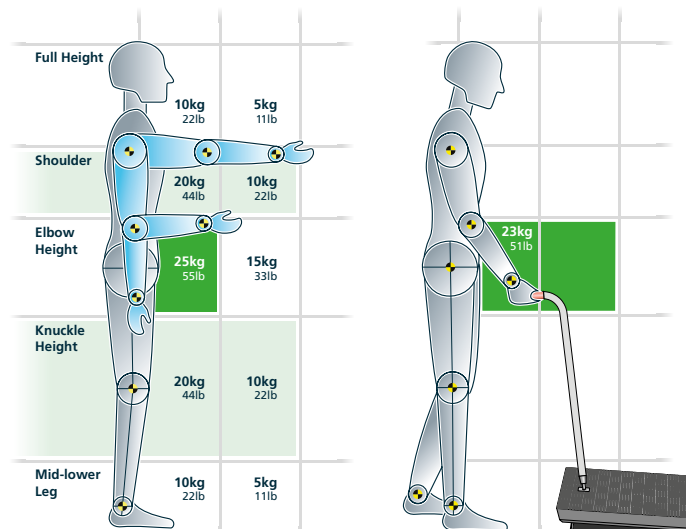
Fibrelite's composite access covers are proven to be ergonomically safe to remove and replace. The design incorporates up to two lifting points for our specially designed lifting handles. These allow the operator to remove the cover without trapping fingers or bending over thus maximising the safety of the lifting technique. The weight is kept close to the body preventing back injury; one of the main causes of absence from work and personal injury claims. The charts below show that the safest place to lift or pull a load is close to the body at waist height.



Heavy corroding steel covers requiring a crane & dedicated lifting equipment



Safe, fast, manual removal with Fibrelite lifting handles

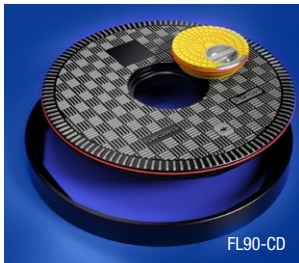


The Health and Safety Executive recommended load moving capabilities in relation to weight and position.

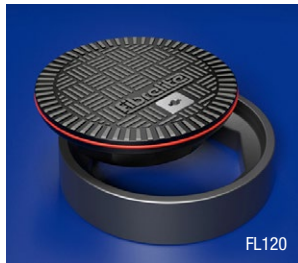
Fibrelite lifting method with a 1m (40") long C250 load rated trench cover. Weights are halved with a two person lift.

Watertight Flat Sealed Covers

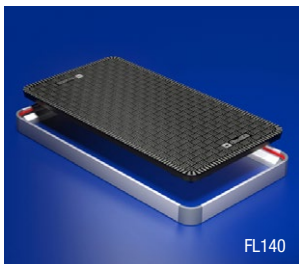
The leading watertight, easy to remove, composite access cover on the market is available in a range of sizes, load ratings and colours. Also, available with centre and off set inspection port.



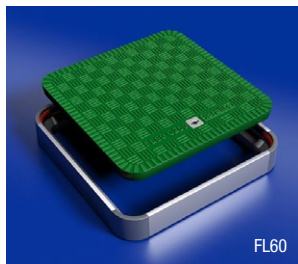
FL90-CD



FL120



FL140



FL60

Round Covers

Product Code Clear Opening

FL100	1020mm dia.
FL90	900mm dia.
FL760	760mm dia.
FL600	610mm dia.
FL180	457mm dia.
FL120	300mm dia.

Description

FL100	Flat sealed cover and composite frame
FL90	Flat sealed cover and composite frame
FL760	Flat sealed cover and composite frame
FL600	Flat sealed cover and composite frame
FL180	Flat sealed cover and composite frame
FL120	Flat sealed cover and composite frame

Square & Rectangular Covers

Product Code Clear Opening

FL140	1400 x 700mm
FL900	900 x 900mm
FL96	900 x 600mm
FL76	760 x 760mm
FL60	600 x 600mm
FL450	450 x 450mm

Description

FL140	Flat sealed cover and aluminium frame
FL900	Flat sealed cover and aluminium frame
FL96	Flat sealed cover and aluminium frame
FL76	Flat sealed cover and aluminium frame
FL60	Flat sealed cover and aluminium frame
FL450	Flat sealed cover and aluminium frame

Electrical Drawpits/Junction Boxes

The electrical drawpit range offers a perfect watertight containment solution. There is a choice of either fixed height or adjustable height systems. The adjustable height system includes a skirt, which allows the frame to be set to grade level more easily during installation. All systems are completed at grade level with a Fibrelite watertight sealed cover.

Fixed Height Systems



S2-160



S80-2760



S7SB-276

Product Code Internal Dimensions

S1-1450	450 x 450 x 600mm
S2-160	600 x 600 x 600mm
S3-176	760 x 760 x 600mm
S4-176	760 x 760 x 760mm
S7SB-276	1200 x 1200 x 1200mm
S80-2760	862 x 862 x 675mm

Description

S1-1450	GRP solid base sump with watertight flat sealed cover and frame
S2-160	GRP solid base sump with watertight flat sealed cover and frame
S3-176	GRP solid base sump with watertight flat sealed cover and frame
S4-176	GRP solid base sump with watertight flat sealed cover and frame
S7SB-276	GRP solid base sump with watertight flat sealed cover and frame
S80-2760	GRP solid base sump with watertight flat sealed cover and frame

Adjustable Height Systems



S1-3140-SKIRT



S4-376-SKIRT

Product Code Internal Dimensions Description

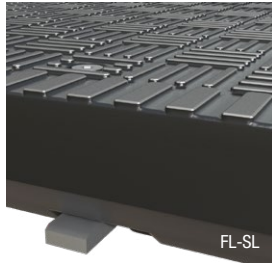
S1-3450-SKIRT	450 x 450 x 600mm	GRP solid base sump and skirt with watertight flat sealed cover and frame
S2-360-SKIRT	600 x 600 x 600mm	GRP solid base sump and skirt with watertight flat sealed cover and frame
S3-376-SKIRT	760 x 760 x 600mm	GRP solid base sump and skirt with watertight flat sealed cover and frame
S4-376-SKIRT	760 x 760 x 760mm	GRP solid base sump and skirt with watertight flat sealed cover and frame

Cover/Frame Locks

Protects against theft and unauthorised access.



FL-RL



FL-SL

Product Code	Description
FL-RL	Cover encapsulated lock for use with all flat sealed round covers
FL-SL	Cover encapsulated lock for use with all flat sealed square and rectangular covers

Lifting Handles



FL7A

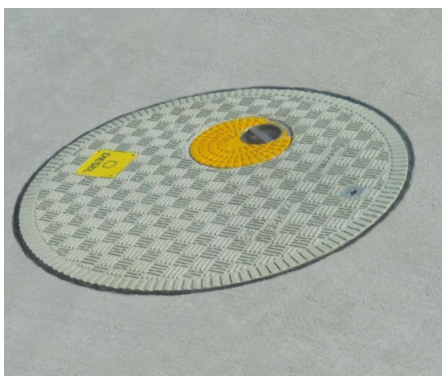
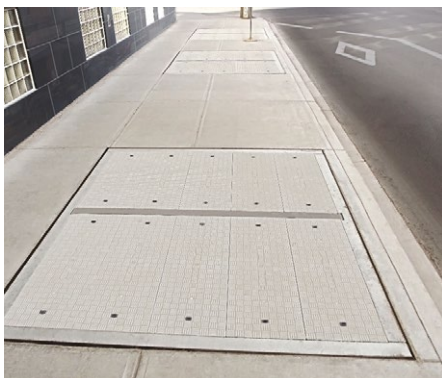


FL7

Product Code	Description
FL7A	To remove and replace all types of covers. Features a foot lever designed to break the seal on watertight flat sealed covers
FL7	To remove and replace raised covers and trench covers
FL7A-ENCL	910mm x 362mm x 100mm lockable cabinet to house two FL7A lifting handles

Coloured & Personalised Covers

Fibrelite covers can incorporate logos and/or be colour-coded to match a facility's branding, or even to identify the specific underground service that can be accessed via a particular cover.



Technical Resources

Each product is fully supported with dimensional product drawings and installation instructions. To access this information please contact Fibrelite directly or visit our website at www.fibrelite.com

Installation

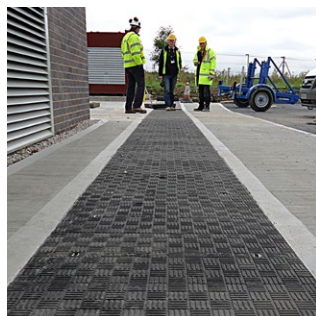
Performance of Fibrelite's access covers is dependent on correct installation and installers must follow our product specific instructions. For unusual installations, please contact our technical department for advice.

Fibrelite's Commitment

Fibrelite products are manufactured in the UK, US and Malaysia. Fibrelite ensures the strictest control on raw material quality and manufacturing standards. All products are manufactured in accordance to the ISO standard. ISO accreditation applies to the UK manufacturing plant.

Our Global Sales & Support Network

Fibrelite was established in 1980 and currently has three manufacturing plants around the world. Our head office and main manufacturing plant is located in England and serves the UK, Europe, Middle East and Africa. America and Canada are serviced by our US plant and sales office based in Smithfield. In 2011, Fibrelite opened a new manufacturing plant in Malaysia to supply products to the Asia Pacific region. Fibrelite has an established global network of distributors to ensure a local Fibrelite representative is available wherever required.

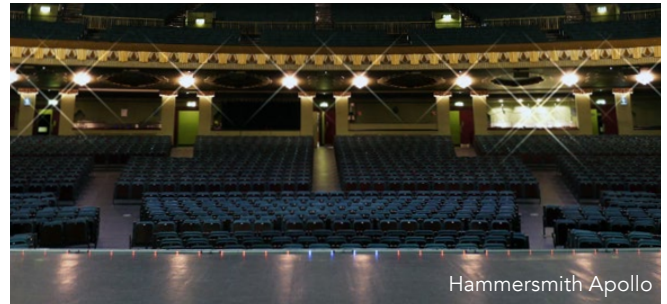


Customer testimonials

Theatre

"Overall I think Fibrelite is a great solution to a difficult design problem for us of achieving both a robust and high load capacity cover to the multicore cables running for stage to control desk whilst maintaining low weight and easy access."

Jonathan Size, Foster Wilson Architects



Hammersmith Apollo

Power Station

"We were looking for an installation to replace our ageing duct covers. Fibrelite came up with this solution and it is manufactured and sourced locally."

Paul Ellis, Eggborough Power Station



Eggborough Power Station

If you'd like to stay in touch with all that's happening at Fibrelite then join the conversation on our social media channels. You'll find us on LinkedIn, X, Facebook & Youtube.



UK Office:

Snaygill Industrial Estate
Keighley Road
Skipton
North Yorkshire
BD23 2QR
UK
Tel: +44 (0) 1756 799 773
Email: enquiries@fibrelite.com

USA Office:

3250 US Highway 70 Business West
North Carolina
Smithfield
NC 27577
USA
Tel: +1 919 209 2404
Email: enquiries@fibrelite.com

Malaysia Office:

Lot P.T.27259,
Jalan Sigma U6/14,
Bukit Cherakah, Seksyen U6,
40150 Shah Alam,
Selangor Darul Ehsan
Tel: + 603 7847 1888
Email: enquiries@fibrelite.com