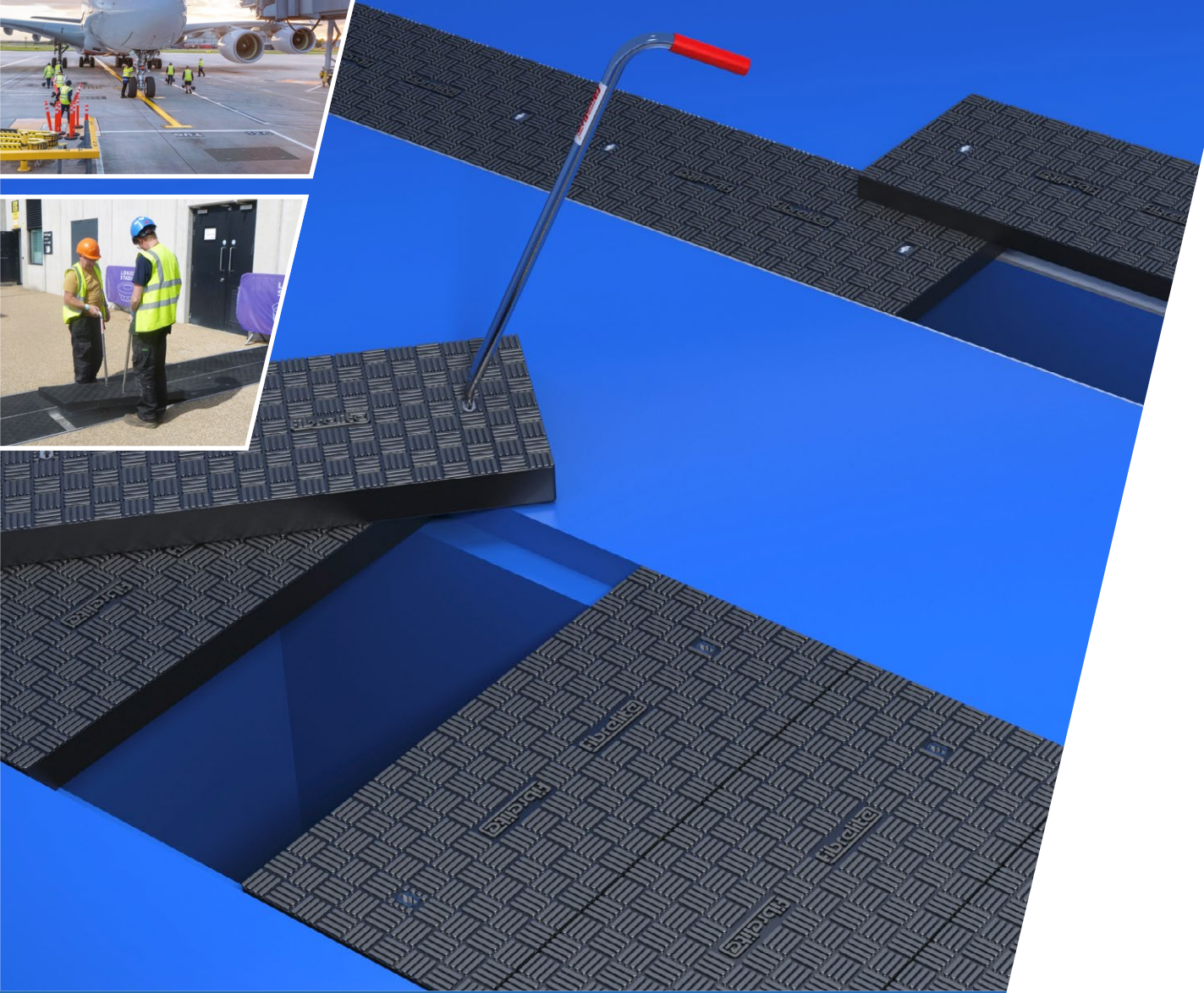


SAFE
ALTERNATIVE
TO METAL AND
CONCRETE



GRP Composite Trench Covers

Lightweight for easy and safe manual removal,
without compromising on strength

FIBRELITE 

PART OF OPW a **DOVER** company

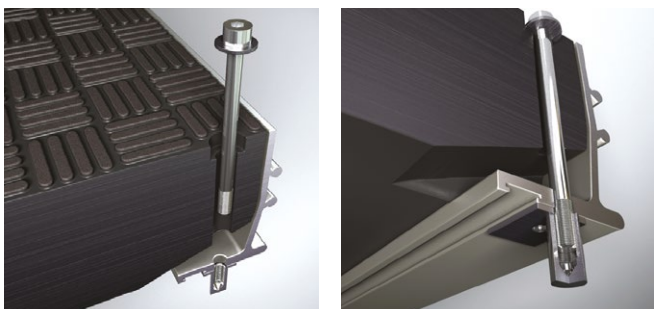
RETAIL FUELLING
INDUSTRIAL
TRENCH
STEAM

Load ratings
from 1.5 to
90 tonnes

Benefits in Summary

- Load ratings from A15 to F900 (BS EN 124)
- Wide range of sizes, colours and shapes.
- Unaffected by underground gases and most chemicals
- Maintenance free - will not corrode, crack or crumble
- Sealed covers are water and odour tight
- Excellent insulator against heat
- Easy and safe manual removal
- Lifting handle eliminates back injury and crushed fingers
- Security locks available
- Eliminates risk of theft due to no resale value to the scrap market
- Incredibly strong monolithic structure that will not delaminate
- Excellent slip/skid and wear resistance properties equivalent to modern high grade road surface
- Range of UV stable colours available that will not flake or crack
- Cover marking/customisation available
- Conductive and non-conductive options

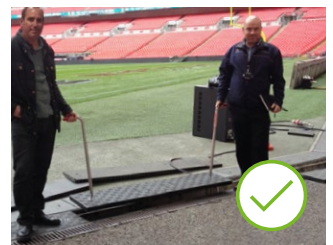
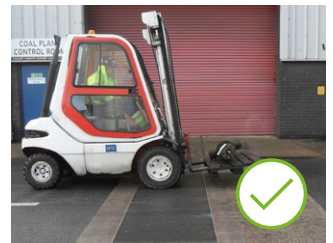
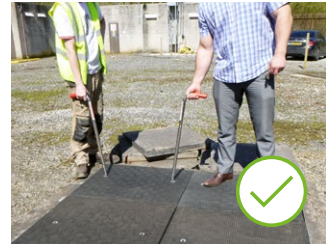
Security Restraints Available



Out With the Old

The increased demand for composites is mainly due to the heavy, crumbling and failing traditional materials such as metal and concrete.

By using lighter materials, operational injuries are prevented, work sites are made safer and ease of installation and maintenance is made available to utility workers and contractors.



Modular GRP composite trench covers to cover positions where ease of access and structural performance are critical

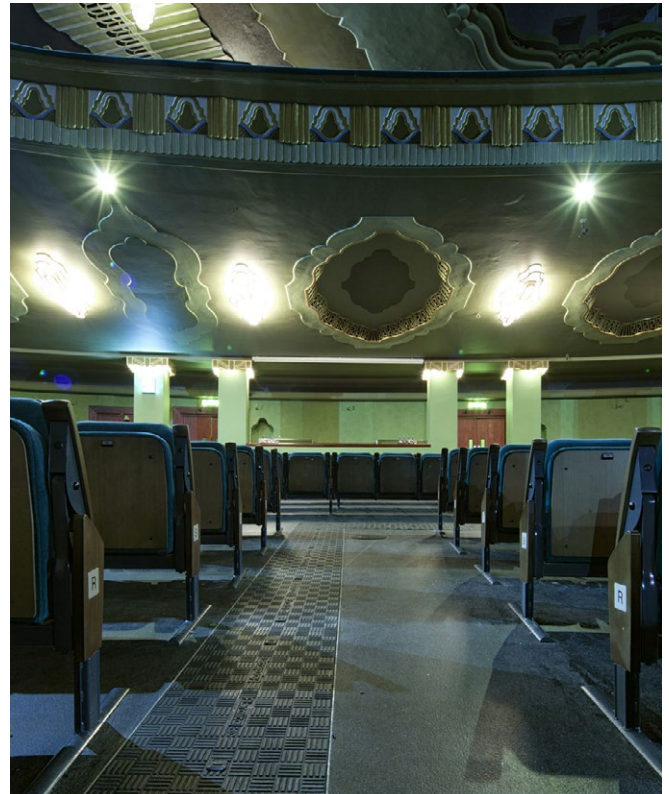
Why Choose Fibrelite?

Fibrelite has been at the forefront of composite quality and innovation since 1980 when we designed the world's first GRP composite manhole cover for the retail petroleum industry. Our high-performance, lightweight, safe-to-lift composite covers – including the unique F900 load-rated trench cover – are now selected by specifiers, architects and engineers worldwide.

Although GRP composite access covers are now increasingly preferred to the traditional metal or concrete options, not every composite cover is going to perform to the highest standards year after year.

With a Fibrelite trench cover, you can be sure that you have a high-performance product created via resin transfer moulding (RTM) to create a durable, monolithic cover that you can fit-and-forget. What's more, each one is individually engineered under the watchful eye of our technical teams in our own manufacturing facilities.

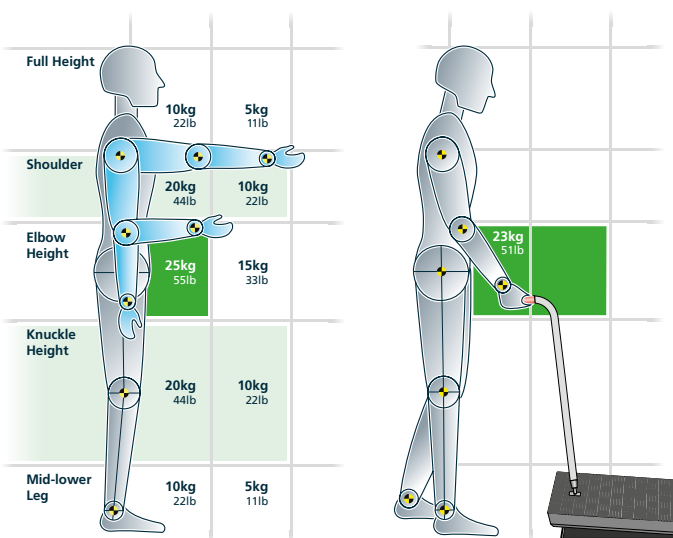
What's more, each cover is manufactured to a stringent quality plan, in line with our Kitemark approval (KM 40638), and under a quality assurance system operated to the ISO standard.



Fibrelite covers installed in the UK's iconic Hammersmith Apollo theatre.



F900 Fibrelite covers installed at the UK's largest port, Felixstowe.



The Health and Safety Executive recommended load moving capabilities in relation to weight and position.

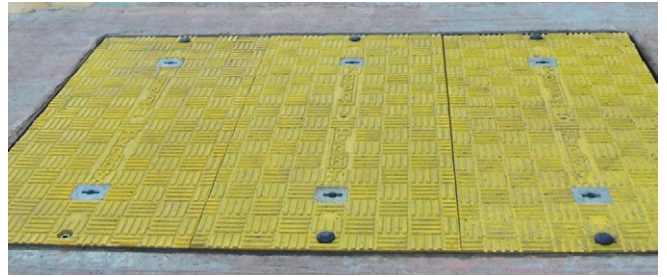
Fibrelite lifting method with a 1m (40") long C250 load rated trench cover. Weights are halved with a two person lift.

Composite is the perfect alternative to crumbling concrete and heavy metal covers

Custom Colours & Branding

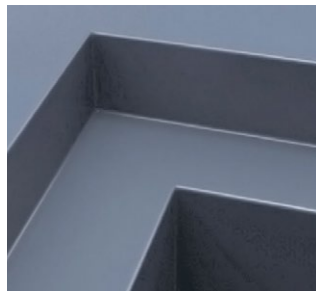
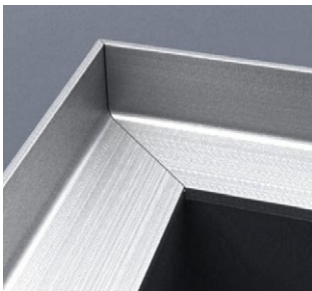
Fibrelite composite covers can also be moulded in virtually any colour or colour-combination and as the pigment is added into the resin during manufacture, there are no problems with the colour scratching or fading over time.

This means that covers can incorporate logos and/or be colour-coded to match a facility's branding or even to identify the specific underground service that can be accessed via a particular cover.



Frame or Rebate Installation

Can be installed onto our specialised frame or existing rebate.

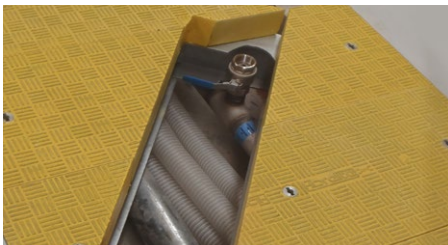


Configurations

Covers can be custom moulded to accommodate pipework entry, shallow depths with stepped cover profiles, steam and gas release vents, inspection ports and much more.



Fibrelite Covers Can be Moulded and Shaped to Accommodate Almost Any Trench Opening

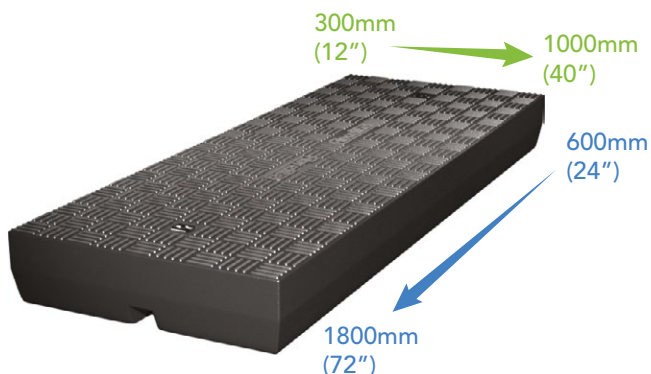


Custom Covers to fit Precast Concrete and Preformed GRP Trenches



Load Ratings From 1.5 Tonnes to 90 Tonnes

| | | |
|---|---|---|
|  | <p>Up to: 90 Tonnes Group 6 (F900)</p> <p>For use in areas imposing particularly high wheel loads, e.g. aircraft pavements.</p> |  |
|  | <p>Up to: 60 Tonnes Group 5 (E600)</p> <p>For areas imposing high wheel loads, e.g. docks, aircraft pavements.</p> |  |
|  | <p>Up to: 40 Tonnes Group 4 (HS25/D400)</p> <p>For carriageways of roads (including pedestrian streets), hard shoulders and parking areas, for all road vehicles.</p> |  |
|  | <p>Up to: 25 Tonnes Group 3 (C250)</p> <p>For gully tops, kerbside roads which, when measured from the kerb edge, extends a max of 0.5 m into the carriageway and a max of 0.2 m into the footway.</p> |  |
|  | <p>Up to: 18 Tonnes US Standard Duty (HS20)</p> <p>For use in traffic service areas as per AASHTO standard.</p> |  |
|  | <p>Up to: 12.5 Tonnes Group 2 (B125)</p> <p>For footways, pedestrian areas and comparable areas, car parks or car parking decks.</p> |  |
|  | <p>Up to: 5 Tonnes 50 kN / 5 Tonne Load Rated Covers</p> <p>For use in raised curb locations where light vehicular access is possible.</p> |  |
|  | <p>Up to: 1.5 Tonnes Group 1 (A15)</p> <p>Areas which can only be used by pedestrians and pedal cyclists.</p> |  |



World's Largest Range

Trench covers are available in a range of widths from 300mm to 1m; a range of lengths from 600mm to 1800mm and a range of depths from 50mm to 203.2mm. Bespoke sizes are also available.

Corrosion-resistant: Composite covers are an obvious choice where water, waste water or corrosive liquids are involved

Technical Resources

Each product is fully supported with dimensional product drawings and installation instructions. To access this information please contact Fibrelite directly or visit our website at www.fibrelite.com

Installation

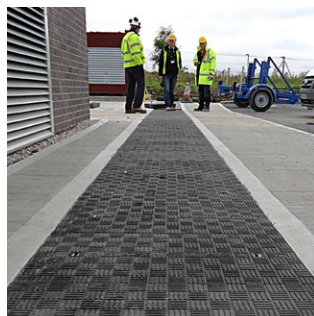
Performance of Fibrelite trench covers is dependent on correct installation and installers must follow our product specific installation instructions. For unusual installations, please contact our technical department for advice.

Fibrelite's Commitment

Fibrelite products are manufactured in the UK, US and Malaysia. Fibrelite ensures the strictest control on raw material quality and manufacturing standards. All products are manufactured in accordance to the ISO standard. ISO accreditation applies to the UK manufacturing plant.

Our Global Sales & Support Network

Fibrelite was established in 1980 and currently has three manufacturing plants around the world. Our head office and main manufacturing plant is located in England and serves the UK, Europe, Middle East and Africa. America and Canada are serviced by our US plant and sales office based in Smithfield. In 2011, Fibrelite opened a new manufacturing plant in Malaysia to supply products to the Asia Pacific region. Fibrelite has an established global network of distributors to ensure a local Fibrelite representative is available wherever required.

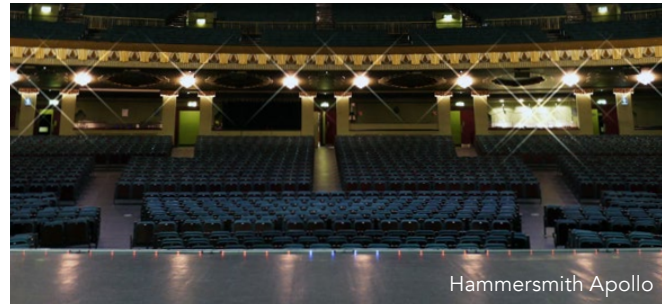


Customer Testimonials

Theatre

"Overall I think Fibrelite is a great solution to a difficult design problem for us of achieving both a robust and high load capacity cover to the multicore cables running for stage to control desk whilst maintaining low weight and easy access."

Jonathan Size, Foster Wilson Architects



Hammersmith Apollo

Power Station

"We were looking for an installation to replace our ageing duct covers. Fibrelite came up with this solution and it is manufactured and sourced locally."

Paul Ellis, Eggborough Power Station



Eggborough Power Station

If you'd like to stay in touch with all that's happening at Fibrelite then join the conversation on our social media channels. You'll find us on LinkedIn, X, Facebook & Youtube.



UK Office:

Snaygill Industrial Estate
Keighley Road
Skipton
North Yorkshire
BD23 2QR
UK
Tel: +44 (0) 1756 799 773
Email: enquiries@fibrelite.com

USA Office:

3250 US Highway 70 Business West
North Carolina
Smithfield
NC 27577
USA
Tel: +1 919 209 2404
Email: enquiries@fibrelite.com

Malaysia Office:

Lot P.T.27259,
Jalan Sigma U6/14,
Bukit Cherakah, Seksyen U6,
40150 Shah Alam,
Selangor Darul Ehsan
Tel: + 603 7847 1888
Email: enquiries@fibrelite.com