



**ENGINEERED FOR
FAST &
EASY &
INSTALLATION**

PIPING | THE SIMPLE SOLUTION

KPS HDPE Double Wall Piping System

EN 14125 | ATEX 137 | EN 13463-1

Engineered for all current liquid fuels, KPS' electrofusion piping is made from high-density polyethylene (HDPE) and includes a permeation layer for extra security. For sensitive areas and fluids like fuel transfer, KPS' double wall (secondary contained) electrofusion piping system provides an extra layer of protection.



www.kpspiping.com

PIPING | WHAT'S NEXT

KPS HDPE Double Wall Piping

EN 14125, ATEX 137 & EN 13463-1 Approved

Specified and installed by oil companies around the globe since 1996, with expertise in engineering plastics dating back to 1950, KPS is leading the development of plastic piping for sensitive liquids like fuel and chemicals.

No Leaks, No Permeation

Engineered for all current liquid fuels, KPS' electrofusion piping is made from high-density polyethylene (HDPE) and includes a permeation layer for extra security.

For sensitive areas and fluids like fuel transfer, KPS' double wall (secondary contained) electrofusion piping system provides an extra layer of protection. All double wall KPS bends and electrofusion fittings have an interstitial space to contain any leakage from the primary pipe and are tested to EN 14125.

Engineered For Fast, Easy Installation

From the start, KPS has focused on 2 key features: making fluid flow safely, and easy installation. Today we're proud to say that all KPS double wall fittings weld both pipe walls simultaneously, with no butt welds needed.

Technical Support & Training

KPS offers technical support from the beginning to the end of every project, including drawings, site surveys, on site training and pipefitter certification.

Approvals

EN 14125, ATEX 137, EN 13463-1 plus many other country or fuel specific standards.

For a full list of certifications and approvals, visit the resources page on the KPS website: www.kpspiping.com/resources

Local Service. Globally

Regionalised manufacturing, and a worldwide network of employees and distributors, ensures hands-on support, local service and solutions, around the globe. KPS piping is manufactured in Sweden for the EMEA region under the watchful eye of the KPS technical team, ensuring consistent quality.



CLICK HERE
To Explore Our
Case Studies



Jeddah Yacht Club, Saudi Arabia

Engineered For Fast & Easy Installation Trusted on Forecourts Globally

Key Benefits

- Suitable for below and above ground installations
- Engineered for fast and easy installation: reducing cost and build time
- Compact electrofusion fittings, elbows and tees
- Flow rates from 80-2,500 litres/minute
- Conductive (electrostatically safe) or non-conductive
- Zero permeation EVOH barrier, protecting the environment
- Corrosion-free
- Technical support, training and certification (classroom and on site)
- Approvals: EN 14125, ATEX 137, EN 13463-1 plus many other country or fuel specific standards
- Leak detection & interstitial monitoring
- Lightweight
- Available in straights or coils
- Recommended operating pressure up to 6 bar (PN10 class)
- Temperature rating -20°C to +50°C

Fluid Compatibility

- Petrol
- Diesel
- Biodiesel
- Ethanol blends*
- AdBlue
- Jet-A1
- Alcohols*
- Acids*
- Chemical products*
- Other*

*For full compatibility details, contact KPS at info@kpspiping.com

Sizes & Configurations For Every Filling Station Requirement

- Below and above ground
- Remote fill
- Pressure and suction
- Ventilation
- Vapour recovery
- Conduits



BP-Aral, Gotha, Germany



Qatar 20 Site Upgrade Programme

KPS Piping: The Simple Solution

Products

All piping is available in conductive or non-conductive and includes a comprehensive range of compact easy-install electrofusion fittings. Custom solutions are also available.

Secondary Containment (Double Wall)

For sensitive areas and fluids like fuel transfer, KPS' double wall (secondary contained) electrofusion piping system provides an extra layer of protection.

All double wall KPS bends and electrofusion fittings have an interstitial space to contain any leakage from the primary pipe and are tested to EN 14125.

KPS Double Wall Piping Systems

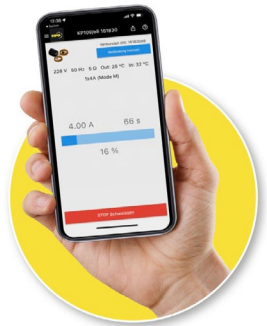
- 200/160mm 6"
- 125/110mm 4"
- 110/90mm 3"
- 75/63mm 2"
- 40/32mm 1"

NEW
110/90mm 3"
double wall
piping

Simple Smartphone-Controlled Pipe Welding

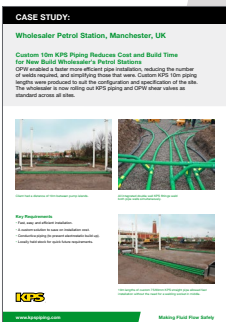
Track & share your welds with the new KPS app-controlled welding machine.

[Click here to find out more](#)



For More Information

[Contact KPS](#)
or visit our [website](#)

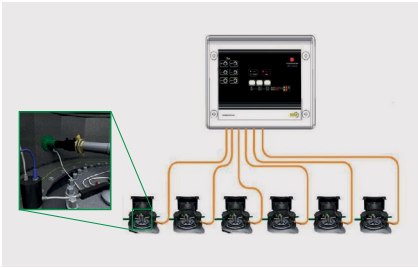


CLICK HERE
To Explore Our
Case Studies



BP, UK

Industries & Applications



Leak Detection System



Electrofusion Welding System Equipment



Installation Tools & Equipment

The KPS plastic piping system provides easy-install, safe, long-term fluid transfer solutions for a broad range of industries and applications.

Industries & Applications

- | | | | |
|---|---|---|--|
|  | Service Stations & Forecourts |  | Marinas, Ports & Harbours |
|  | Mining Fuel Transfer |  | Hydrocarbon Drainage |
|  | Fleet, Commercial & Public Transport Vehicle Refuelling |  | Chemical Processing |
|  | Airports |  | Nuclear |
|  | Military |  | AdBlue / Diesel Exhaust Fluid (DEF) Transfer |
|  | Polluted Water Transfer |  | Oil Transfer & Lubricant Oil |
|  | Diesel Transfer & Storage Terminals |  | Other Fluid Distribution |
|  | Power Supply: Critical Power & Backup Generators |  | Depot Facilities |
|  | Data Centres | Other Industries & Applications | |
|  | Residential & Industrial Heating | Looking for an application or industry you don't see here? Send us an email: info@kpspiping.com | |



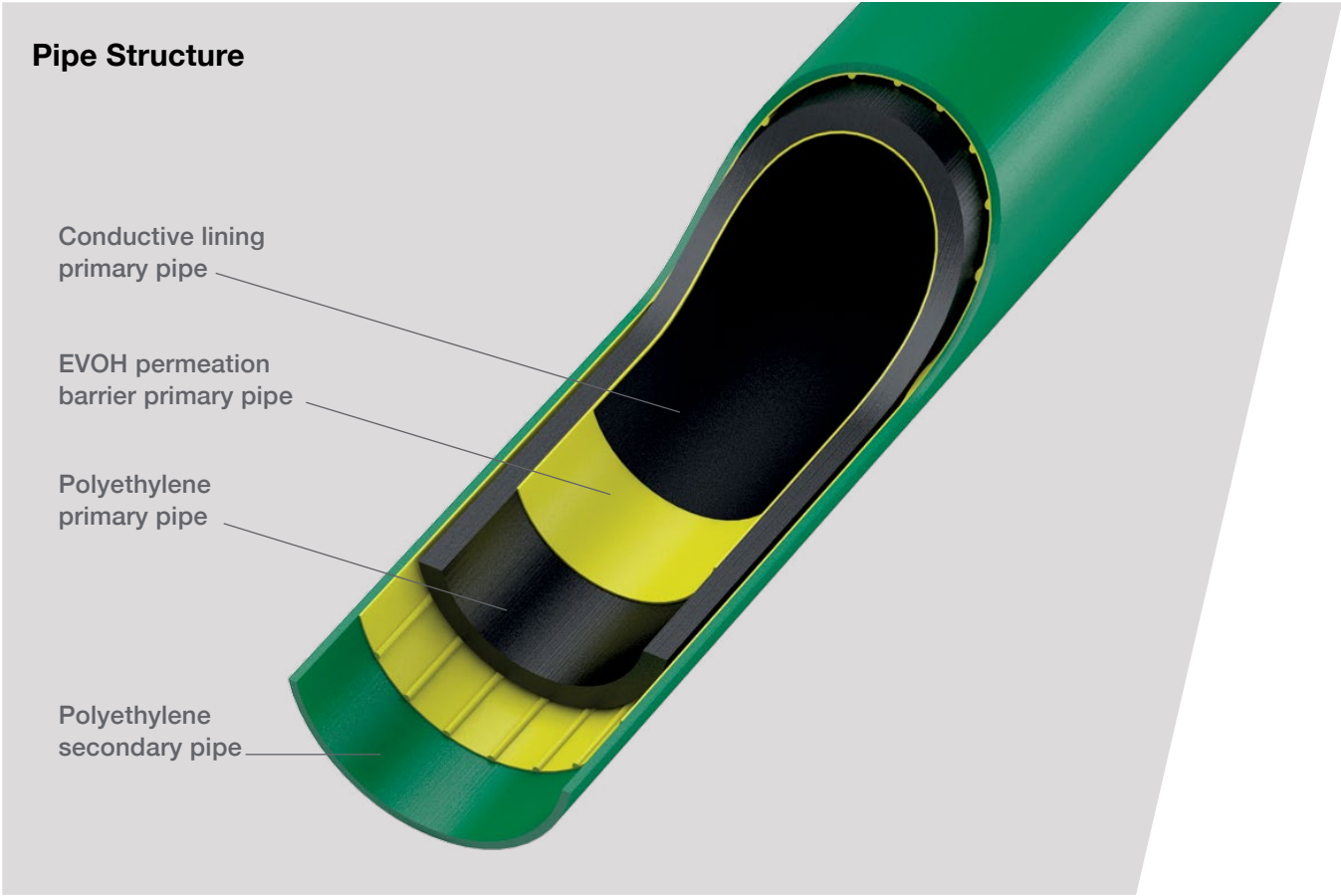
BP-Aral, Hildesheim, Germany



Ethanol Power Plant, Reunion Island

KPS Piping: The Simple Solution

Technical Specifications



Permeation Barrier Layer

Ethylene Vinylalcohol Copolymer with superior barrier properties towards fuel vapours.

CASE STUDY:
Wholesaler Petrol Station, Manchester, UK

Custom 10m KPS Piping Reduces Cost and Build Time for New Build Wholesaler's Petrol Stations

KPS enabled a more efficient gas installation, reducing the number of joints required, and simplifying route clear work. Custom KPS 10m piping lengths were produced to suit the configuration and specification of the site. The wholesaler is now calling for KPS piping and KPS knee valves as standard across all sites.

Key Requirements:
Fast, safe and clean installation.
A complete solution to meet customer needs.
Custom KPS piping for specific configurations.
Custom KPS valves for specific applications.

KPS
www.kpspiping.com Making Fuel Flow Safer

CLICK HERE
To Explore Our
Case Studies

Mechanical & Physical Properties

The KPS piping range is tested and approved according to EN 14125. Hydrostatic pressure testing is performed at 23°C and after conditioning at 50°C. At 23°C pipework is pressurised to the lower test pressure for 5 min and the higher test pressure for 1 min. After conditioning at 50°C pipework is pressurised to the lower test pressure for 5 min.

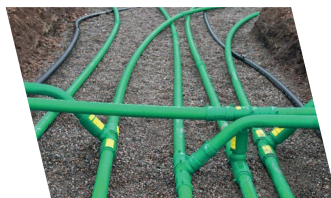
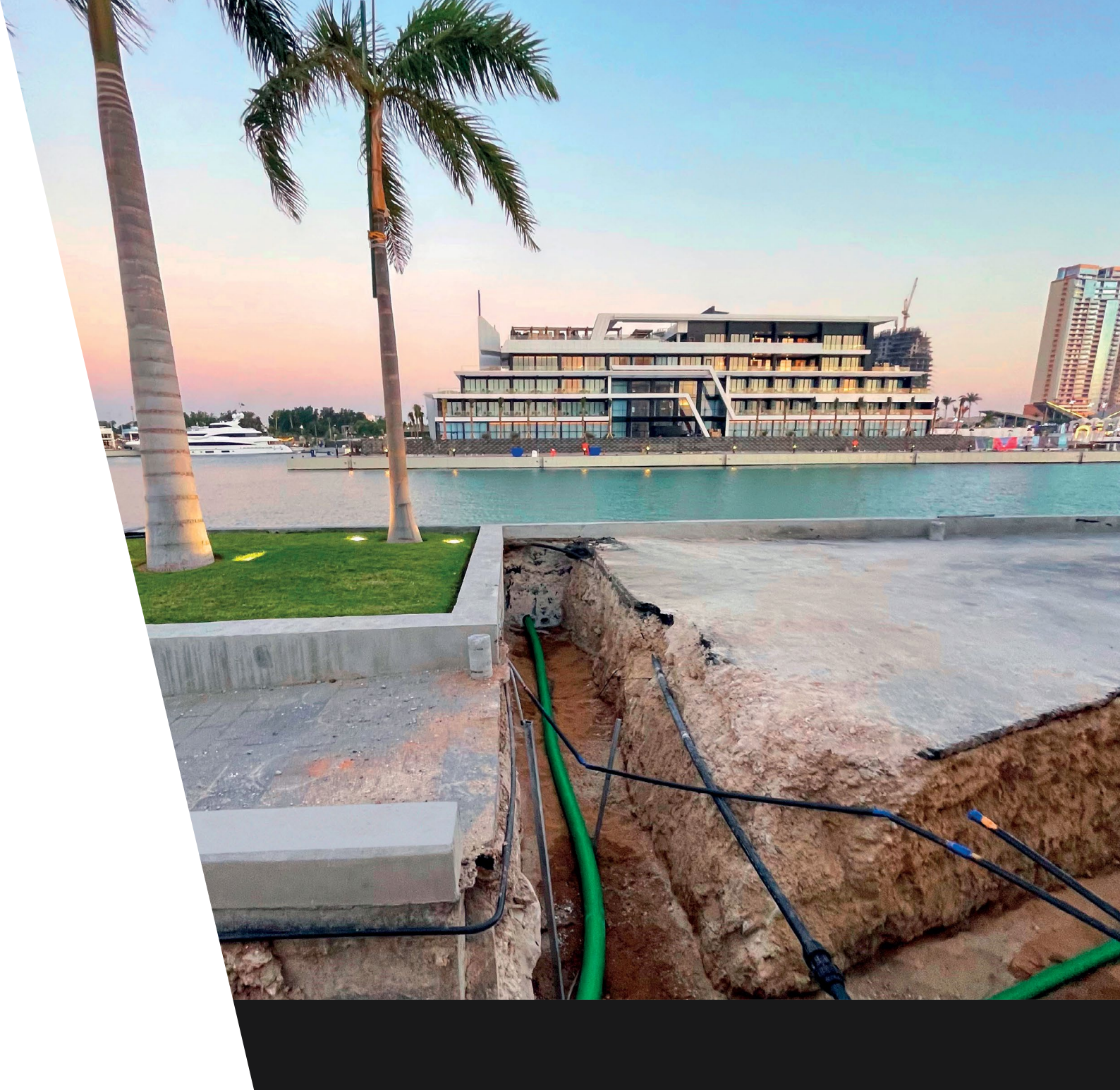
Vacuum testing is performed on pipes intended for vacuum suction including vent, vapour recovery and secondary containment type C2.

Pipework is also (for positive pressure) subjected to cyclic pressure testing at 21.5°C. Pressure is varied between 1.0 and 4.0 bar for 1.5×10^6 cycles.

Physical & Chemical Properties

	Value	Test Method
Temperature Range	-20 to 50°C	EN 14125
Bend Radius	20 × d	-
Crush Resistance	2000 N	EN 14125
Puncture Resistance	500 N	EN 14125
Impact At -20 °C	> 8.8 J	EN 14125
Fuel Compatibility	Wide range of commercially available fuels*	EN 14125, UL 971
Fuel Permeation	< 0.2 g/m ² ·d	EN 14125
Static Electricity	Insulative	EN 13463-1, CENELEC TR50404
Weathering (UV-stability)	> 3.5 GJ/m ²	EN ISO 16871, EN ISO 4892-2
Estimated Working Life	30 years	EN 14125, ISO 9080





Contact Us

Call: +44 (0) 1756 799 773 Email: info@kpspiping.com

Visit: www.kpspiping.com

Interested In Becoming A Distributor?

We are always looking to find new partners in countries where we don't currently have a partner please email us at info@kpspiping.com