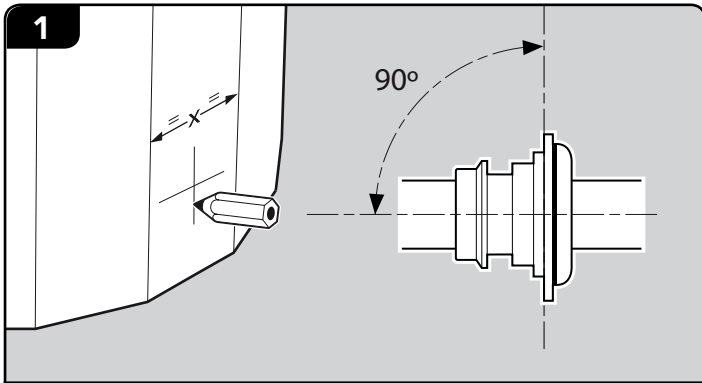


FITTING INSTRUCTIONS

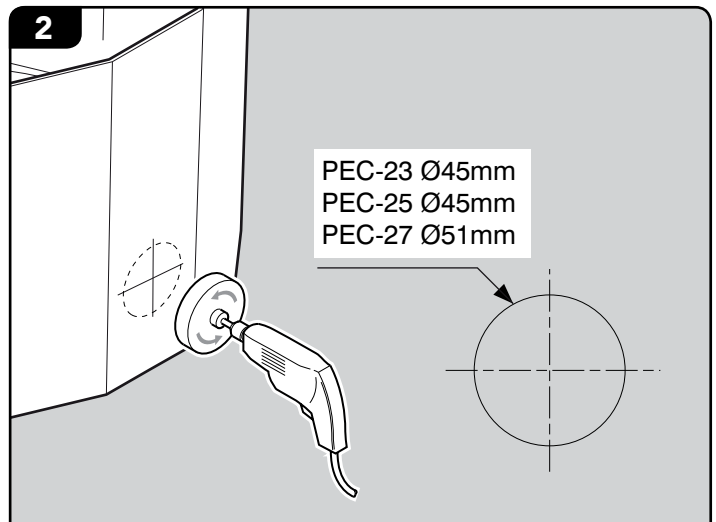
PEC-23 , PEC-25 & PEC-27 Electrical Conduit, Cable Entry Seal Kit

FIBRELITE
PART OF OPW A DOVER COMPANY

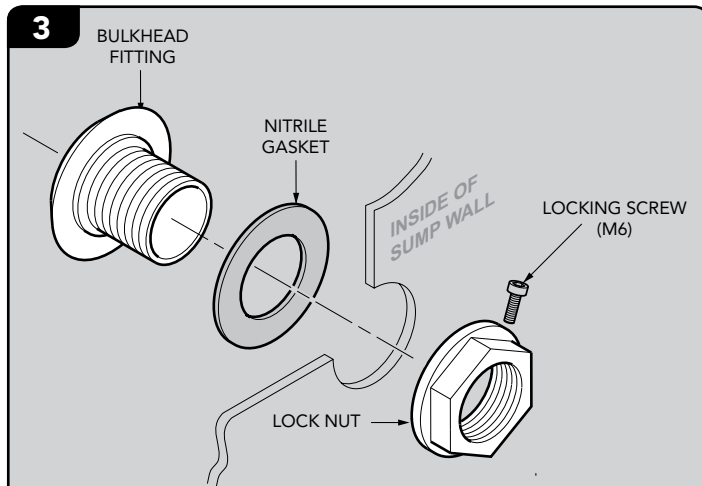


Mark out position for electrical cable entry seal.

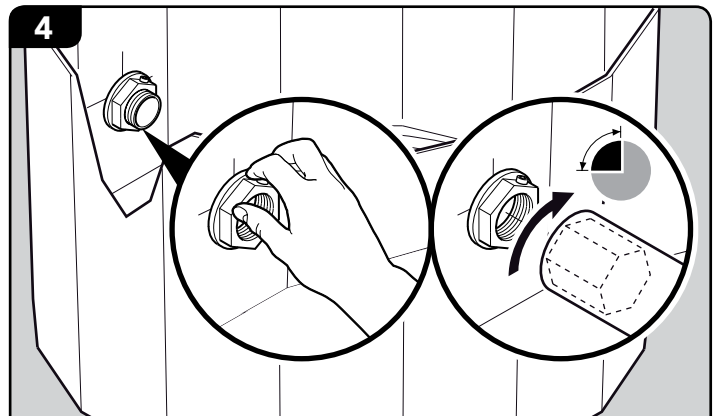
NB: The electrical cable entry seal should be positioned in the middle of a sump panel and when fitted it should be perpendicular to the sump wall and the conduit must enter the electrical cable entry seal perfectly aligned.



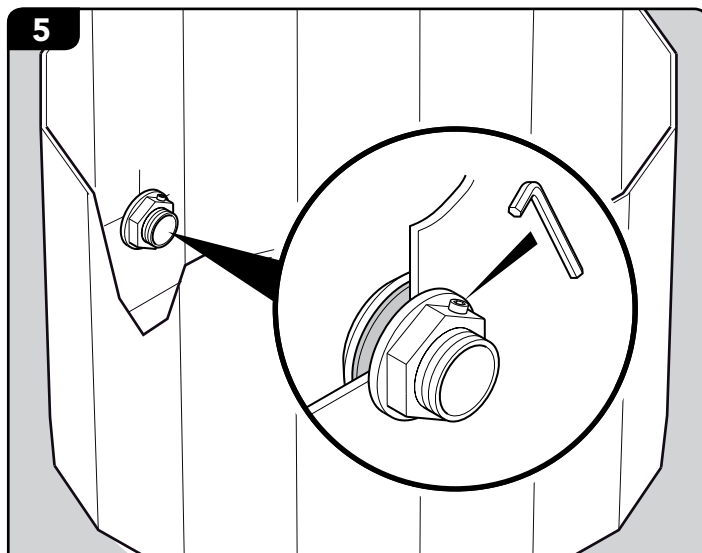
Using a drill piloted 45 mm diameter hole saw cut the correct size hole in the sump wall.



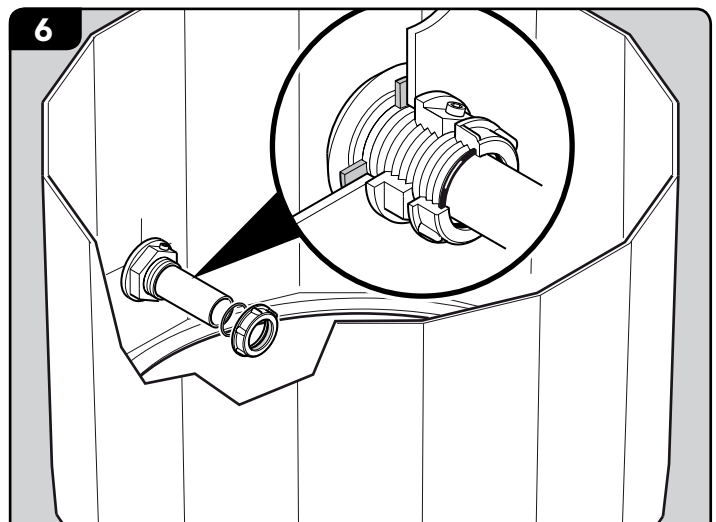
Assemble the electrical cable entry seal as shown ensuring that the gasket is positioned under the flange of the bulkhead fitting on the outside of the sump.



Initially hand tighten the lock nut until it is hand tight (ensure that the locking screw is accessible post installation), then using the supplied box spanner tighten the lock nut an additional 1/4 - 1/2 a turn.



Tighten the locking screw with a 5mm Allen key



Push the conduit through the electrical cable entry seal and seal the conduit with the 'O' ring and seal nut.