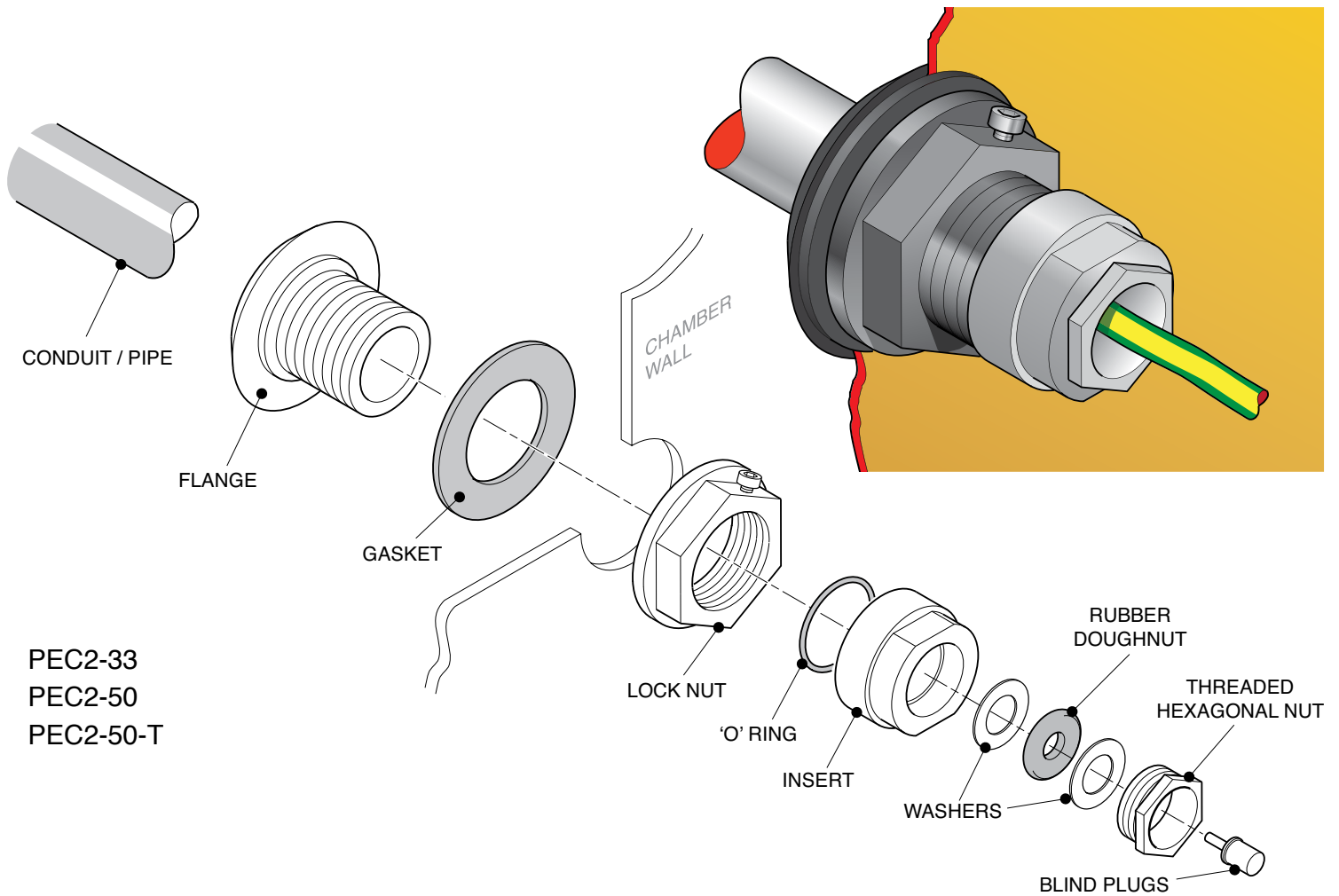


FITTING INSTRUCTIONS

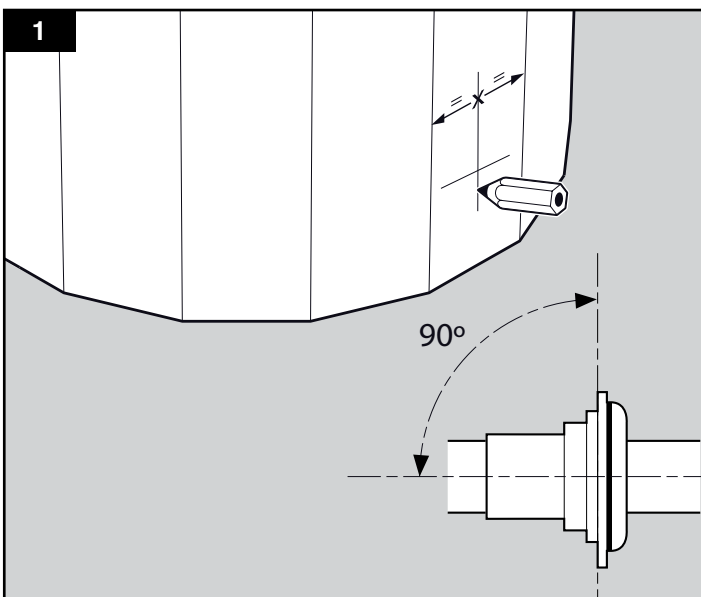
Electrical Conduit Cable Entry Seal Kit

FIBRELITE 

PART OF OPW A DOVER COMPANY

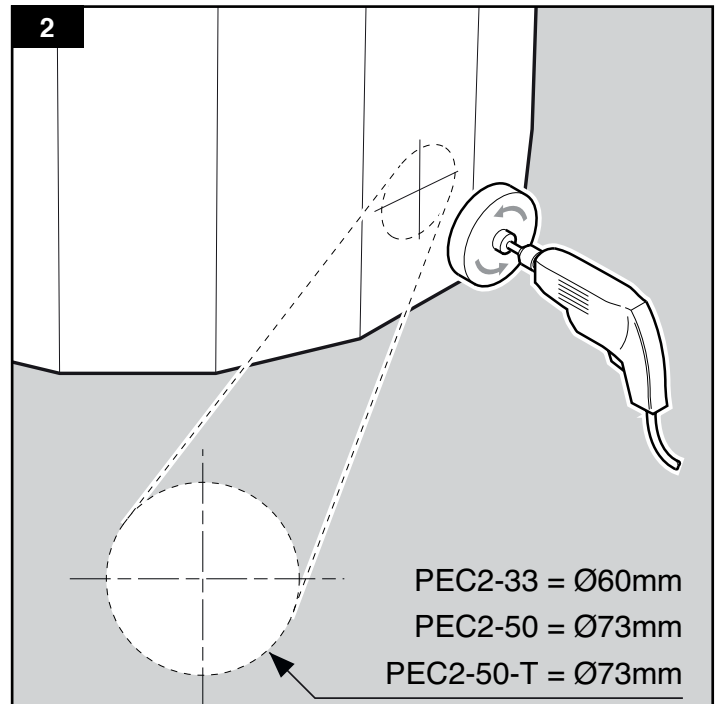


PEC2-33
PEC2-50
PEC2-50-T



Mark out position for electrical cable entry seal.

NB: The electrical cable entry seal should be positioned in the middle of a sump panel and when fitted it should be perpendicular to the sump wall and the conduit must enter the electrical cable entry seal perfectly aligned.



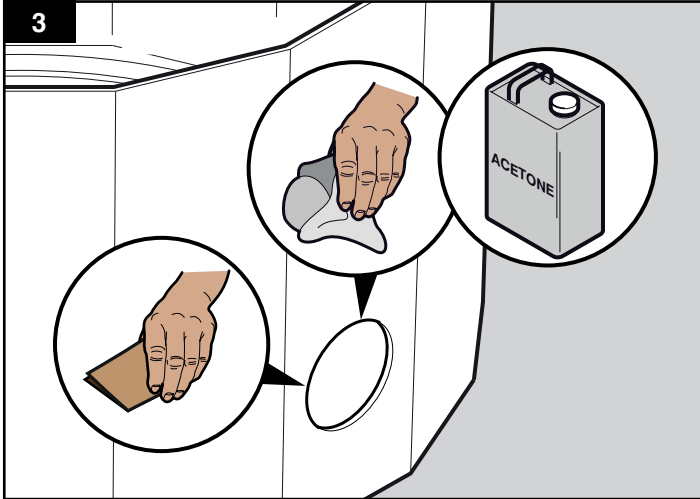
Using a drill piloted diameter hole saw cut the correct size hole in the sump wall.

FITTING INSTRUCTIONS

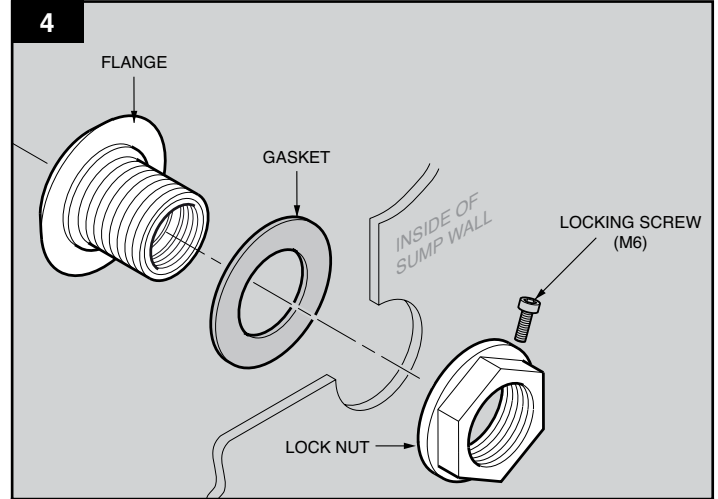
Electrical Conduit Cable Entry Seal Kit

FIBRELITE

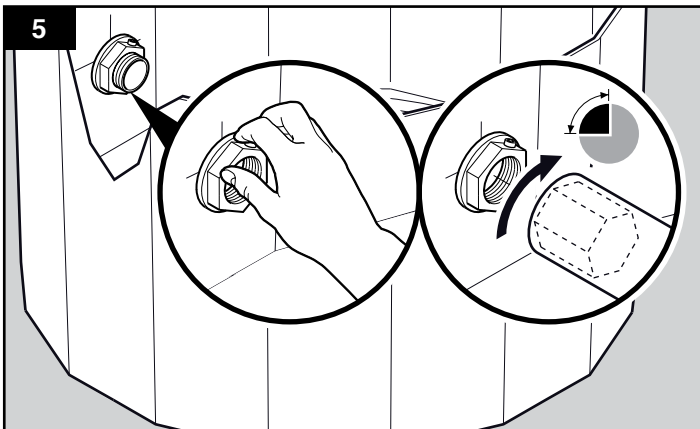
PART OF OPW A DOVER COMPANY



Ensure that the contact area is clean and free from dust and loose material. If necessary clean with sandpaper and Acetone.

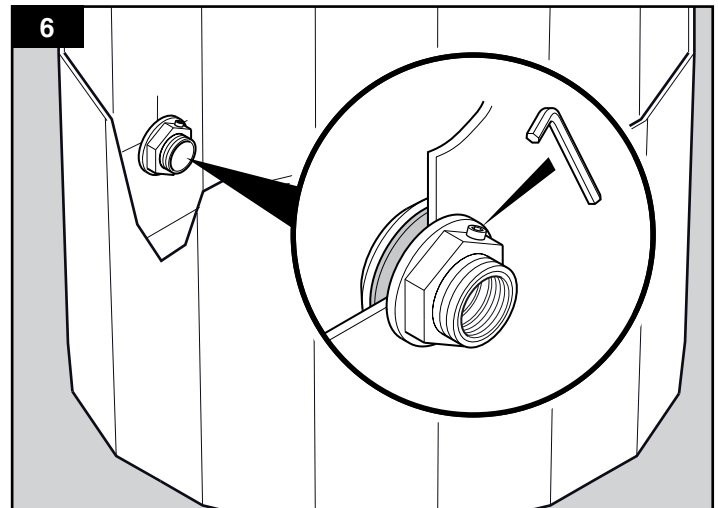


Assemble the electrical cable entry seal ensuring that the gasket is positioned under the flange lip on the outside of the sump.

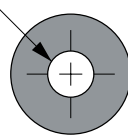
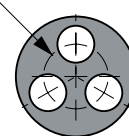


DO NOT OVER TIGHTEN AS THIS MAY DAMAGE THE FITTING

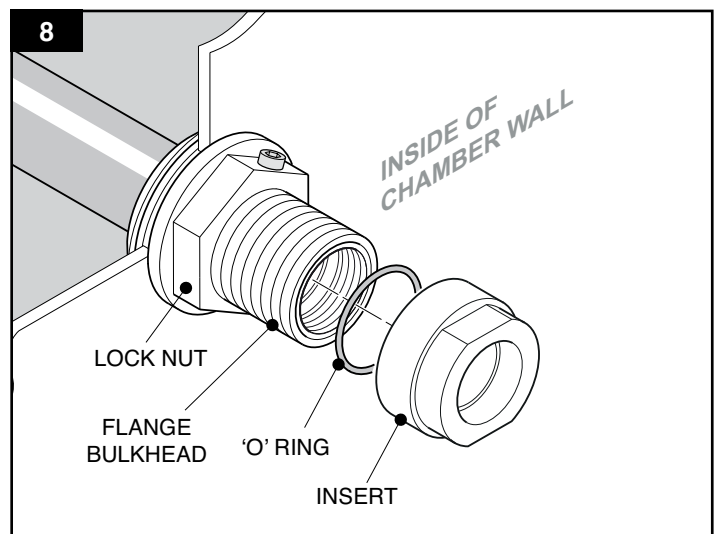
Initially hand tighten the lock nut (ensure that the locking screw is accessible post installation), then using a suitable box spanner tighten the lock nut an additional 1/4 - 1/2 a turn.



Tighten the locking screw with a 5 mm Allen key

7 x 1 CABLE	x 1,2,3 CABLE
<p>1 No. hole Ø9mm - Ø20mm</p>  <p>Standard Doughnut</p>	<p>3 No. holes Ø5mm - Ø8mm on 14 PCD</p>  <p>Multiple Doughnut</p>

Determine the number and size of cables to be routed through the entry seal kit. Fit the appropriate rubber doughnut (standard or multiple) into the recess of the plastic insert. Ensure there is a washer either side of the doughnut. (standard only).



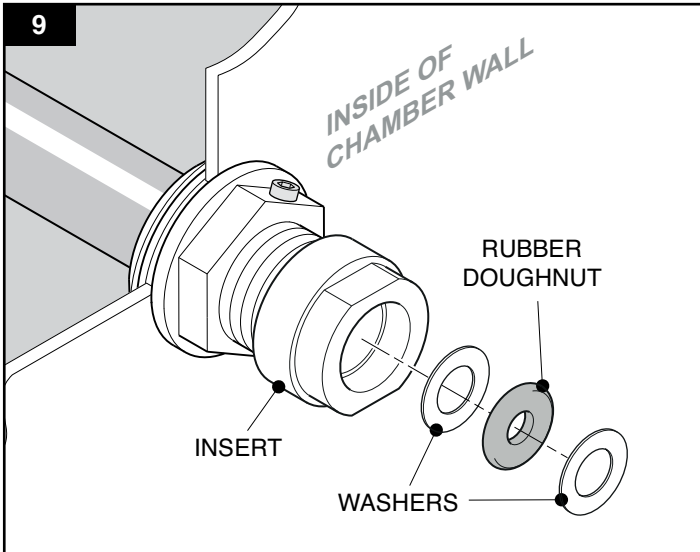
Fit the insert onto the flange bulkhead ensuring that the pre-fitted 'O' ring inside the insert is present before tightening.

FITTING INSTRUCTIONS

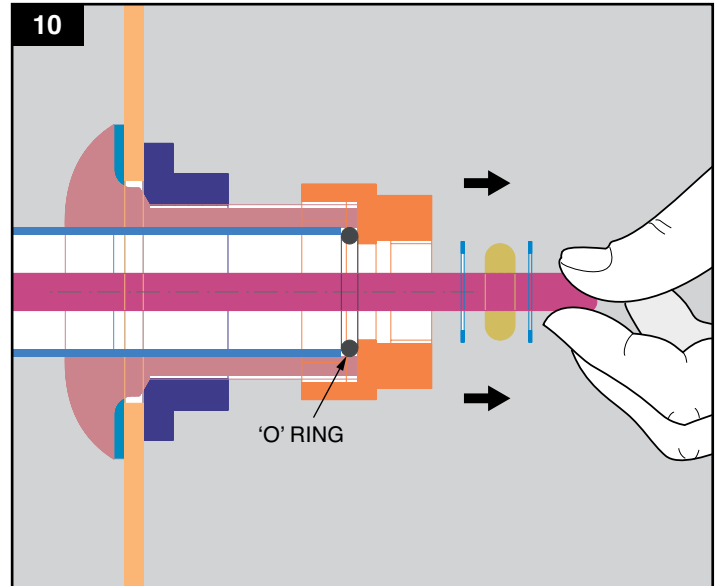
Electrical Conduit Cable Entry Seal Kit

FIBRELITE

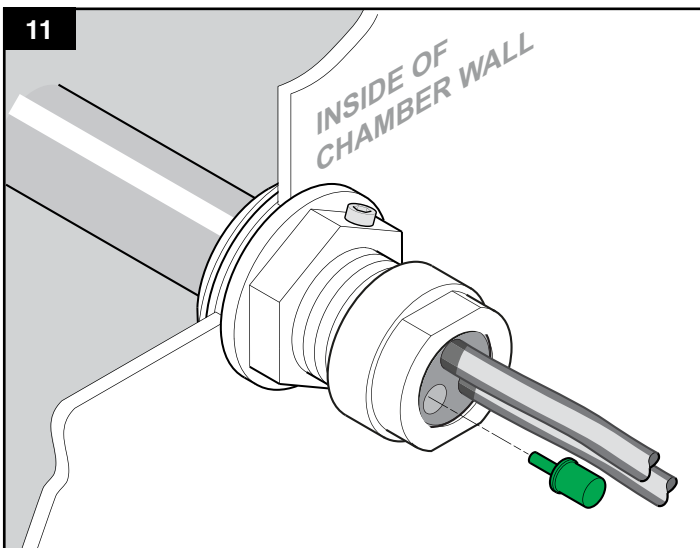
PART OF OPW A DOVER COMPANY



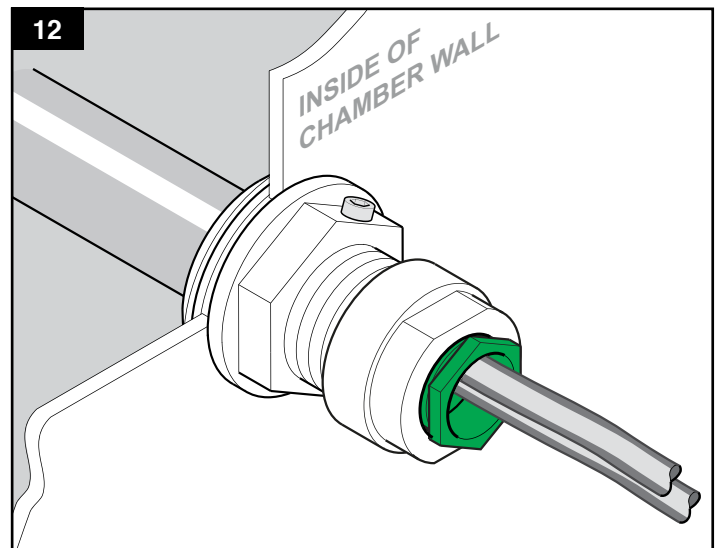
Place a washer then the doughnut into the plastic insert.



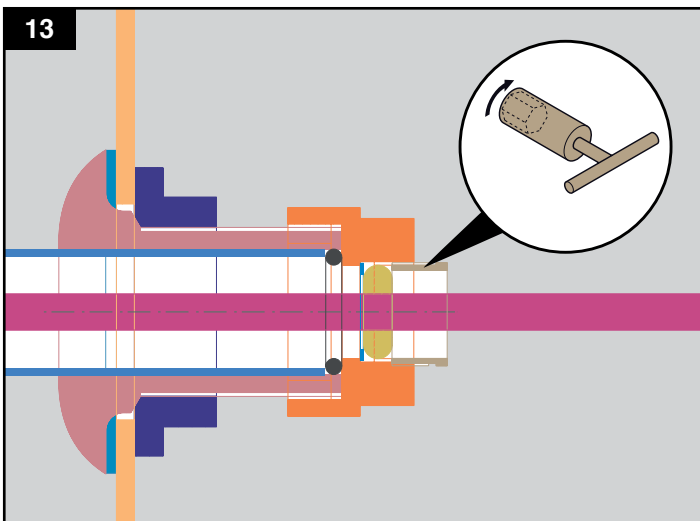
Feed the cable through the doughnut and washers.



If using a multiple doughnut, unused cable sealing holes are to be sealed with blind plugs.



Fit threaded hexagonal nut.



Feed the cable through the hexagonal nut, then tighten the hexagonal nut using a box spanner to secure the cable(s).

Note: The PEC2-50-T is threaded to accept a 1 1/2" BSP conduit/socket.