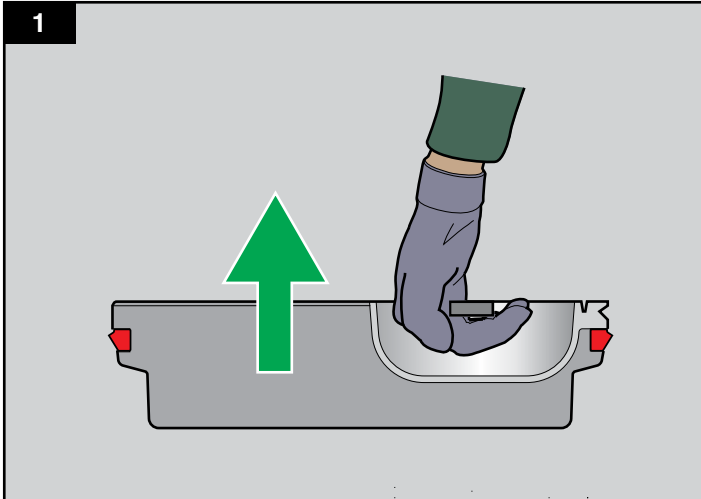
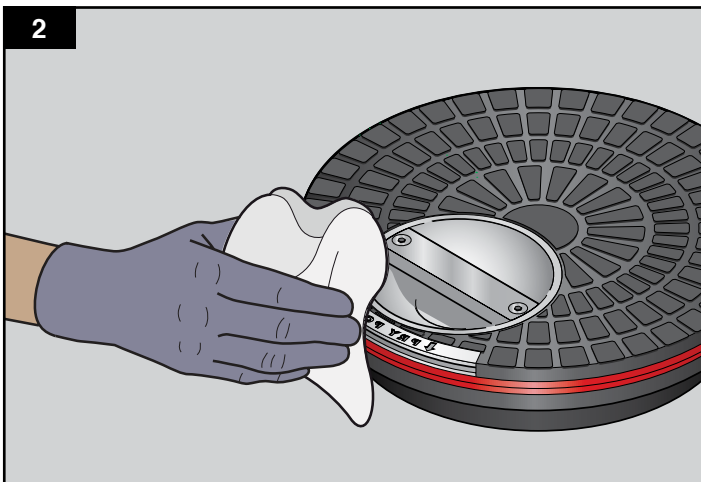


# REPLACEMENT INSTRUCTIONS

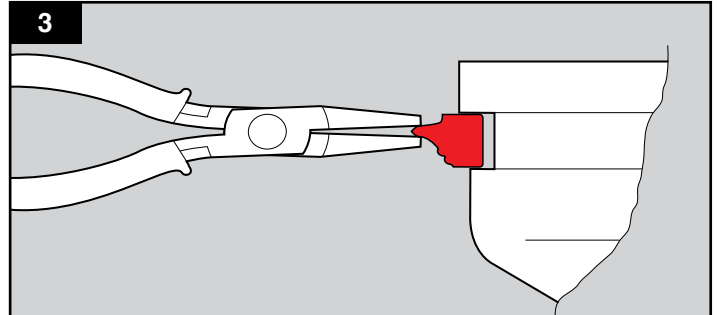
Port Cover (FC-254/FC-10) - Seal Removal and Replacement



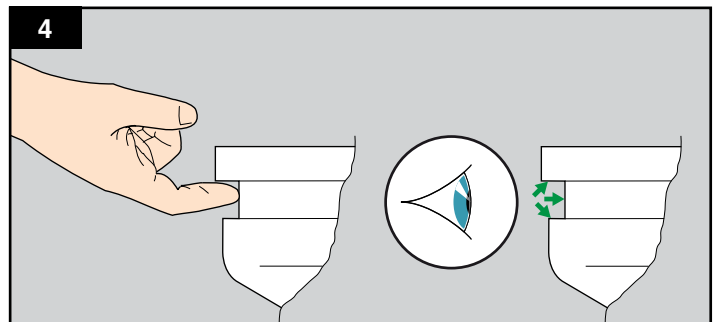
To replace the existing seal, you will require a pair of needle nose pliers and a can of white lithium spray grease. To begin, remove the port cover from the parent cover.



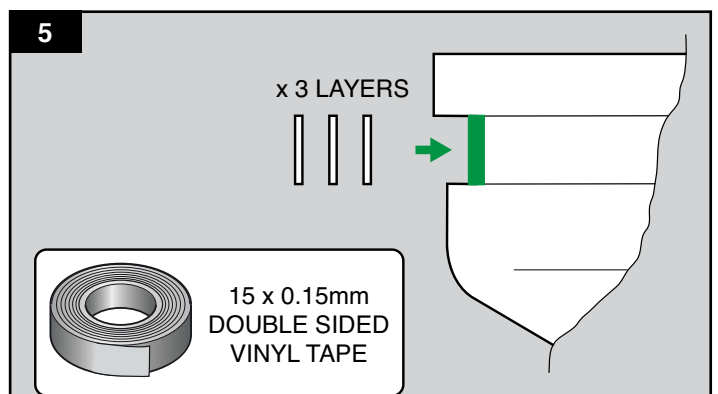
Clean/remove any dirt from the cover and seal.



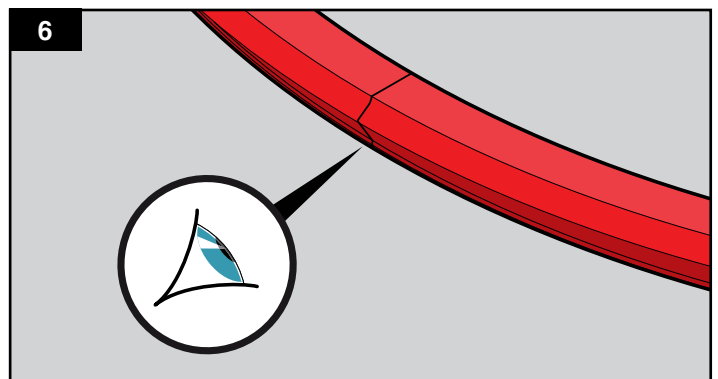
Using a suitable pair of pliers carefully remove the seal from the cover housing.



Ensure that the cover seal recess is clean and free from any grit and residue. The seal recess should be smooth and flat to the touch.



Add 3 layers of 15 x 0.15mm double sided vinyl tape to the back of the cover groove recess.

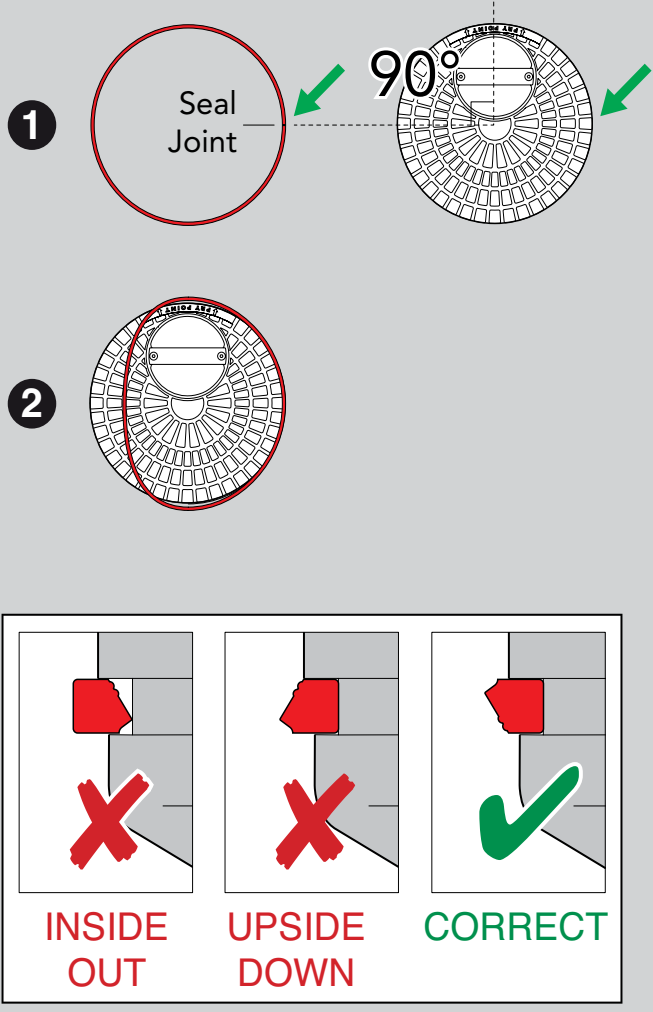


Visually examine the seal to locate the seal joint.

# REPLACEMENT INSTRUCTIONS

Port Cover (FC-254/FC-10) - Seal Removal and Replacement

**7**



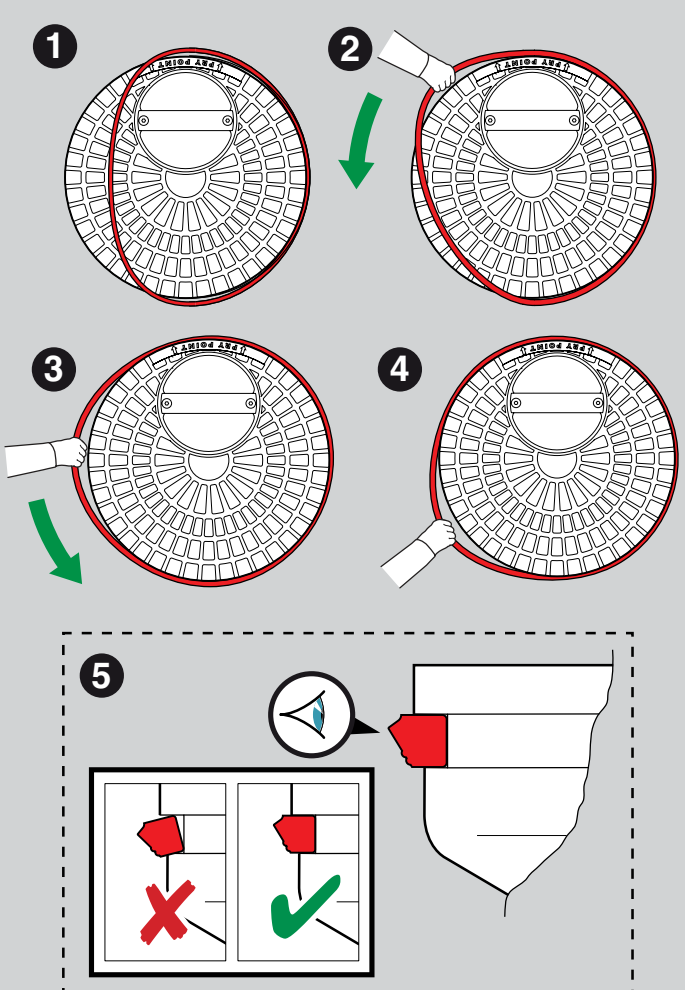
1 Seal Joint 90°

2

INSIDE OUT UPSIDE DOWN CORRECT

Starting with the seal joint at 90° to the port cover pry point, insert the seal into the cover for approximately 50% of the cover circumference.

**8**

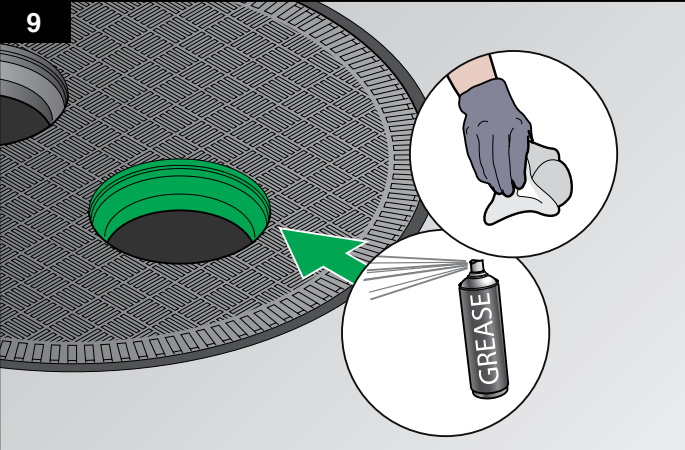


1 2 3 4

5

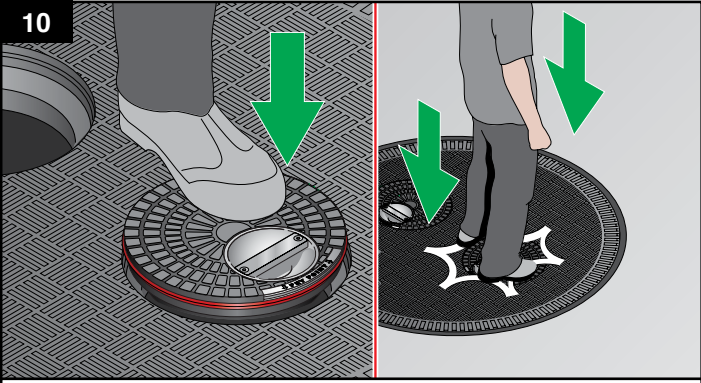
It will be necessary to stretch the remaining length of the seal for it to fit in the cover recess. Visually check to ensure that the seal is correctly fitted.

**9**



Thoroughly clean the parent covers port/s where the port cover sits and apply a light film of white lithium spray grease and wipe down to spread evenly.

**10**



Replace the cover into the parent cover and step on the edges to seat properly. The top edge of the port cover should sit evenly with the top of the parent cover. If port cover does not seat properly, ensure that the interfacing port surfaces are free from residue and that the seal is properly seated in the seal channel.