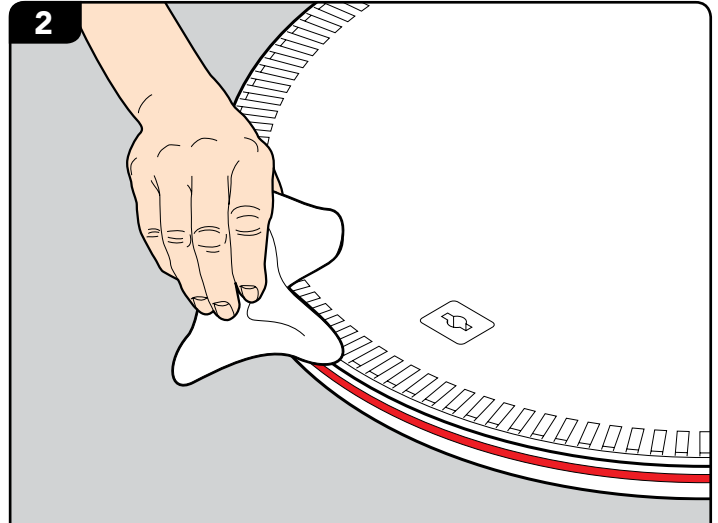


# REPLACEMENT INSTRUCTIONS

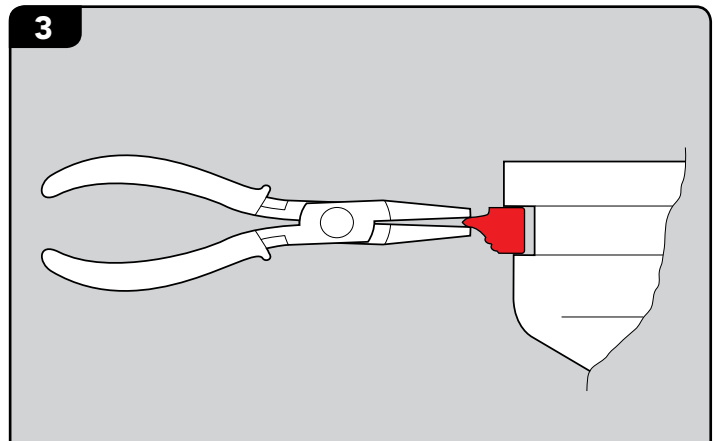
Round Flat Sealed Covers - Seal Removal and Replacement



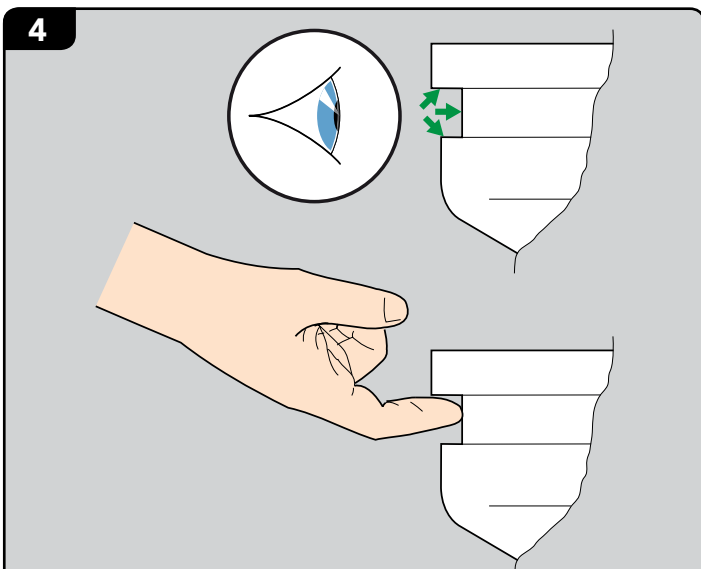
To replace the existing seal, you will require an FL7A lifting handle and a pair of needle nose pliers. To begin, remove the cover from the frame using the FL7A lifting handle.



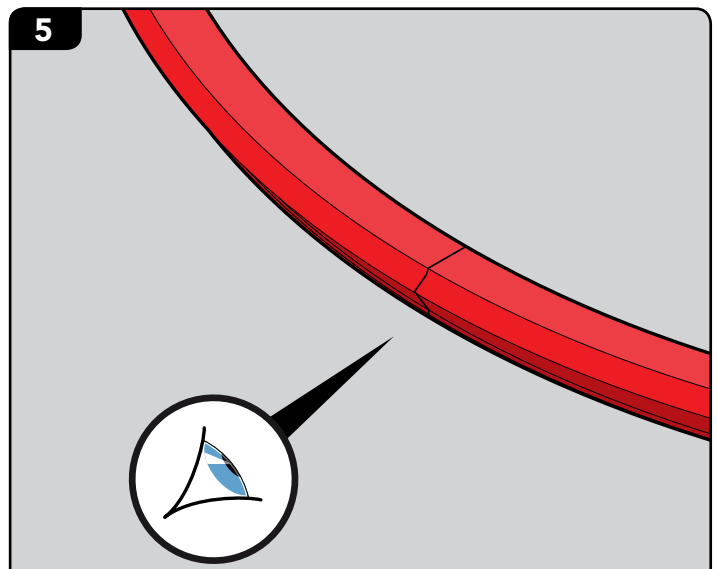
Clean/remove any dirt from the cover and seal.



Using a suitable pair of pliers carefully remove the seal from the cover housing.



Ensure that the cover seal recess is clean and free from any grit and residue. The seal recess should be smooth and flat to the touch.

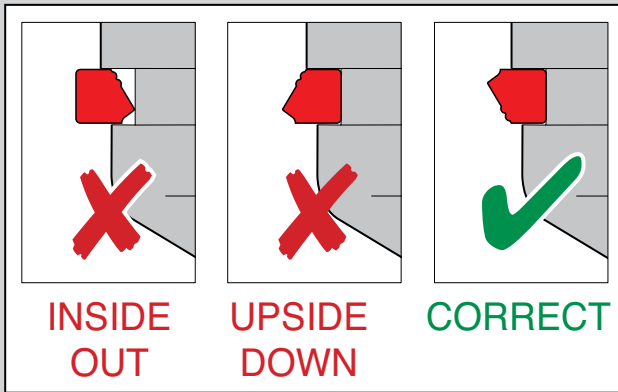
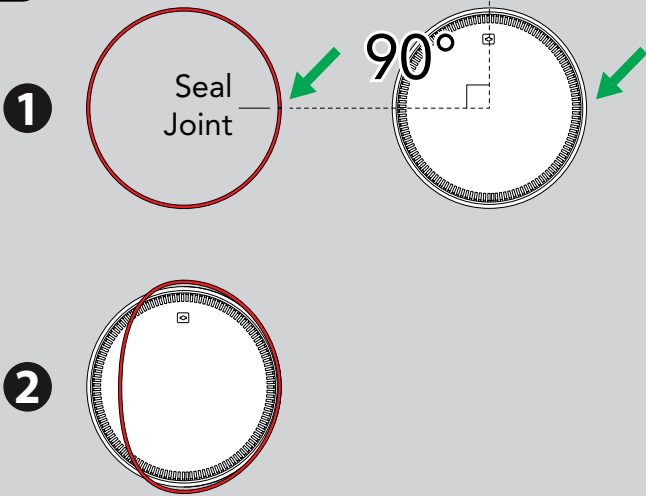


Visually examine the seal to locate the seal joint.

# REPLACEMENT INSTRUCTIONS

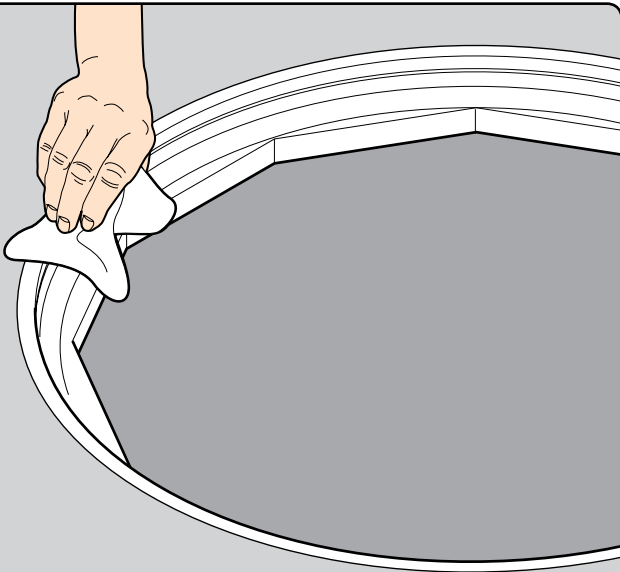
Round Flat Sealed Covers - Seal Removal and Replacement

6



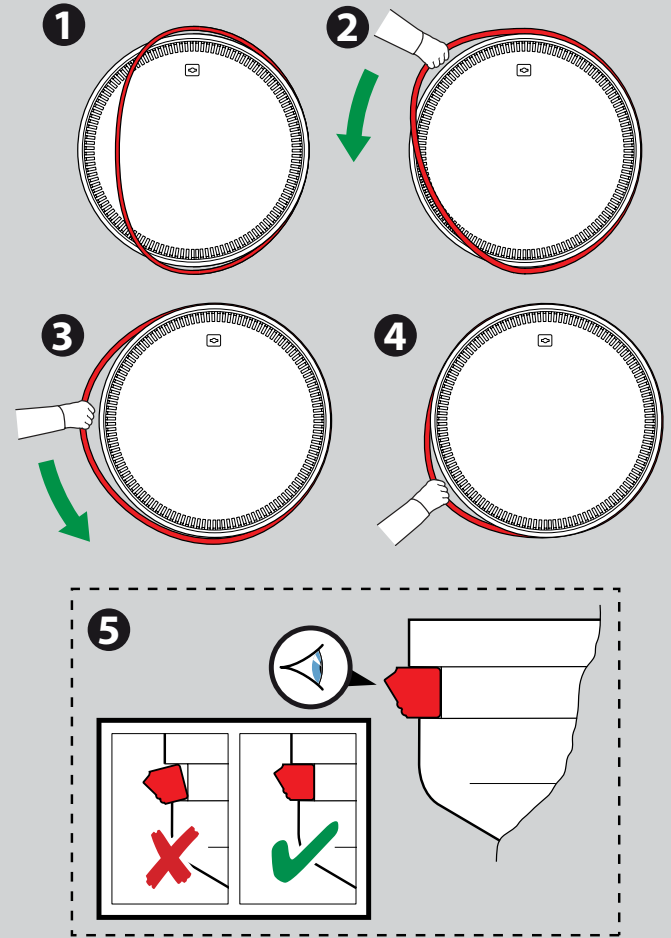
Starting with the seal joint at 90° to the cover key housing, insert the seal into the cover for approximately 50% of the cover circumference.

8



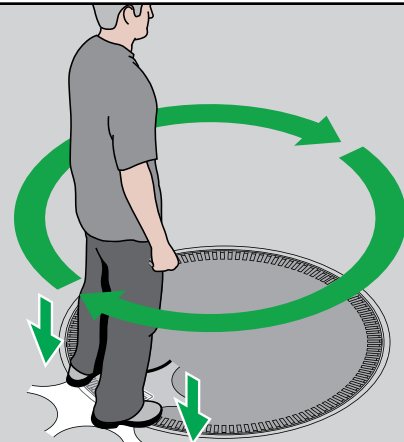
Thoroughly clean the frame prior to positioning the cover.

7



It will be necessary to stretch the remaining length of the seal for it to fit in the cover recess. Visually check to ensure that the seal is correctly fitted.

9



Replace cover into frame and step on edges of cover to seat properly – cover should seat easily into frame so that the top edge of the cover is even with the top of the frame. If cover does not seat properly, ensure that frame is free from residue and that the seal is properly seated in the seal channel.