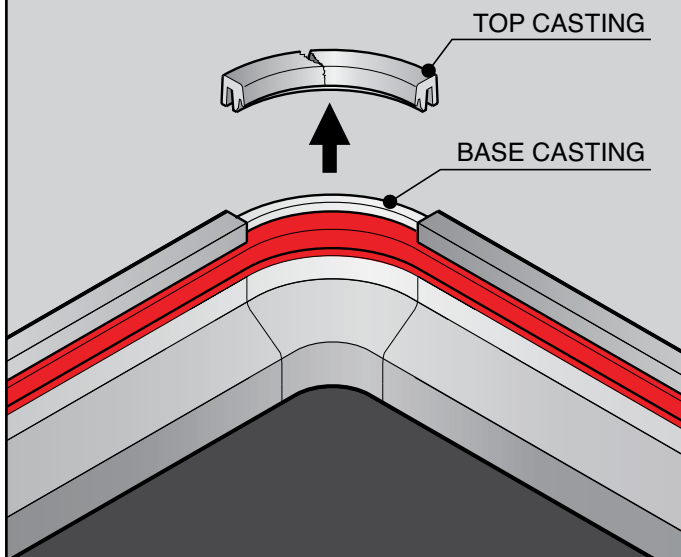
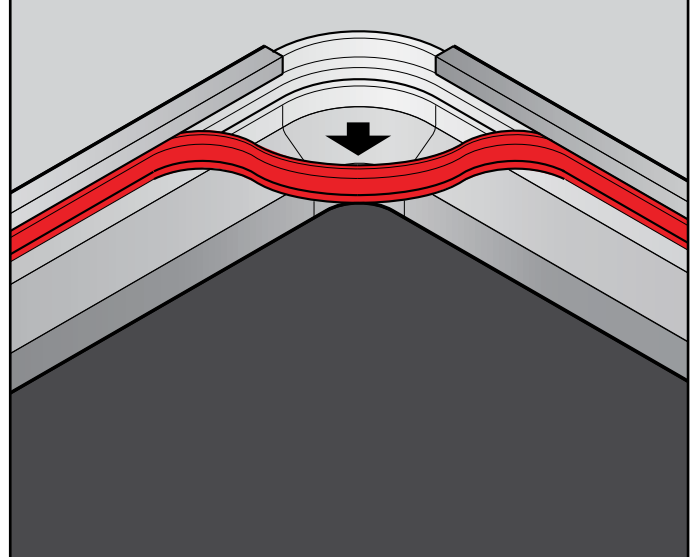


1



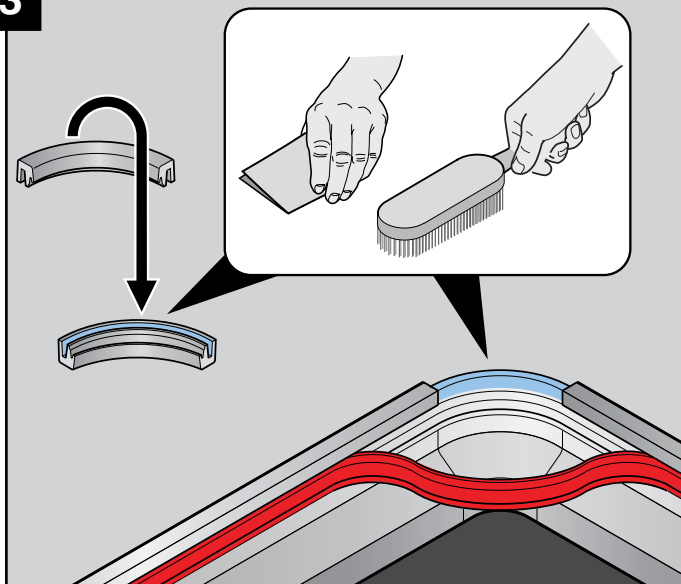
Remove the damaged corner casting. Be careful not to damage the seal as this may effect the covers water tight ability. If the seal is damaged it will need to be removed. Refer to the Seal Replacement Instructions (page 1, steps 1-6) and then continue to step 3.

2



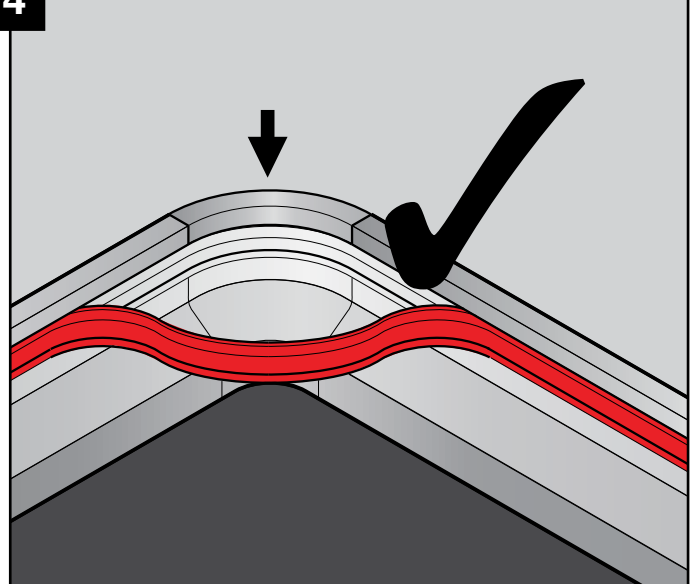
Pull the seal out to ensure it does not get damaged or trapped in the process of replacing the corner casting.

3



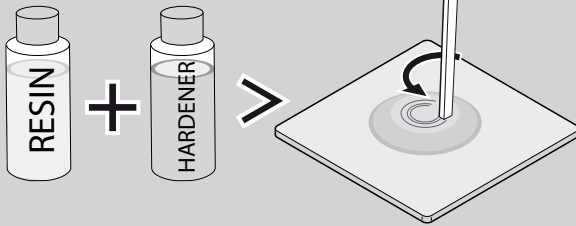
Thoroughly abrade the adhesive contact areas of the corner castings (DO NOT USE SOLVENTS) to remove any debris or glue residue. This can be achieved by using a wire brush or sandpaper. Remove any dust with a clean dry cloth.

4



Dry fit the new corner casting to ensure it seats correctly into position and has no obstructions.

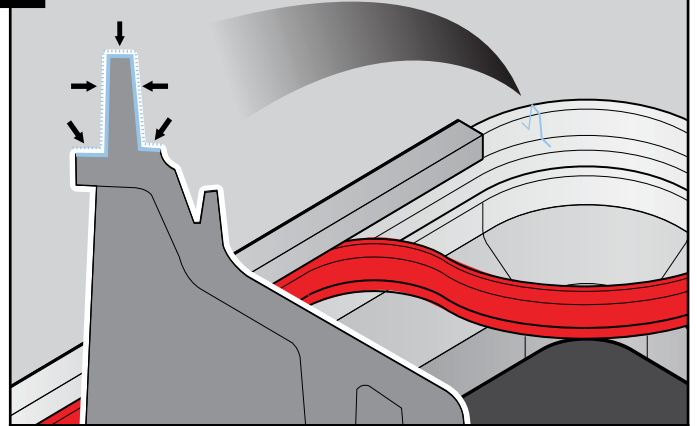
5



Mix Ratio of Glue	1:1 by volume & weight
Handling Strength	3 -5 mins.
Working Strength	30mins.

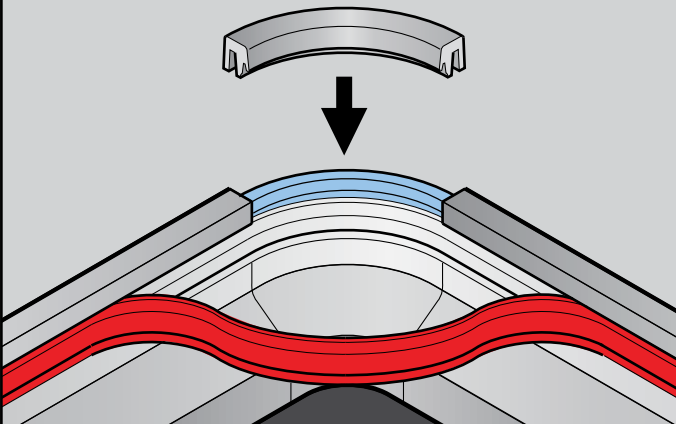
Use chemically resistant goggles/glasses and gloves during mixing and application of the glue. Thoroughly mix a two part glue system resin (R) and hardener (G) in equal amounts onto a suitable board until a uniform Grey colour is achieved.

6



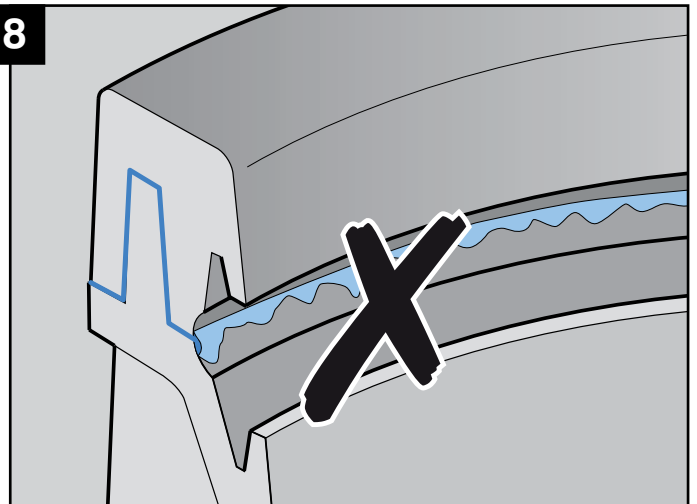
After mixing immediately apply the adhesive to the horizontal joint face and vertical tangs of the base casting.

7



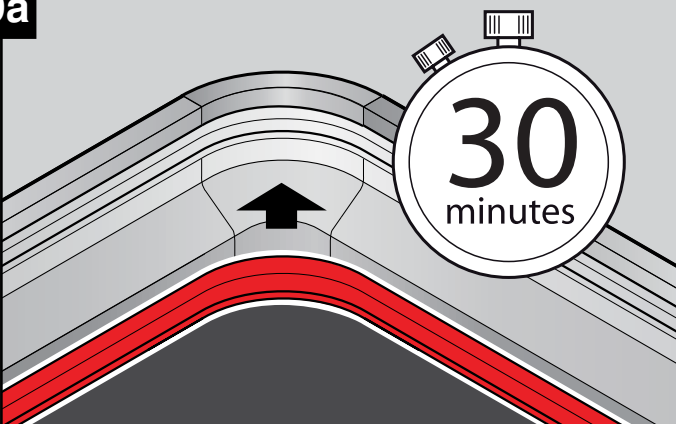
Fit the top casting onto the base casting that is coated with the adhesive.

8



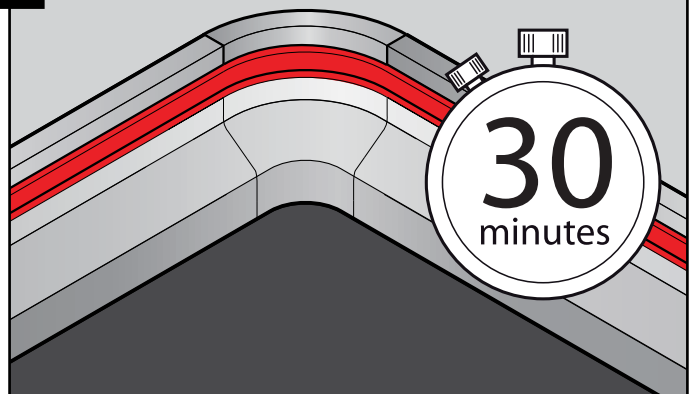
Remove any excess glue from the recess that carries the seal. Failure to do this may result in the seal not "seating" correctly.

9a



If the seal was damaged and had to be replaced allow the glue to cure (approx 30 mins) and refer to the Seal Replacement Instructions (pages 2-3, steps 1-11), if not proceed.

9b



When the glue is cured (approx 30 mins) fit the seal back into the retaining recess.