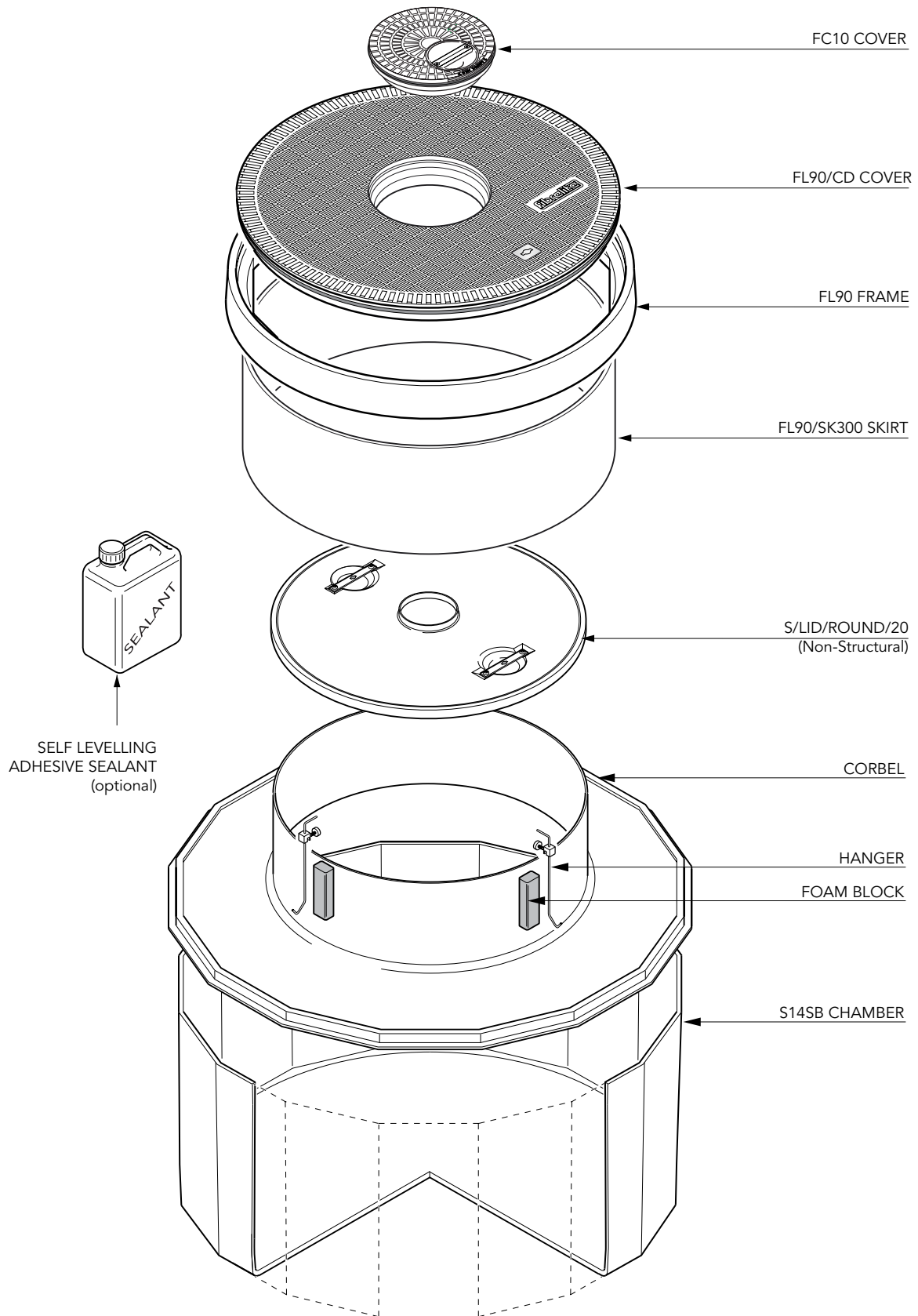


1.4m dia. chamber, corbel with a height adjustable skirt, non-structural internal lid, hand cap and round 900mm flat sealed cover with a central manual dip cover.

For reference purposes only. This drawing is not a specification. Order against product code only. To enable continuous improvement of our products, the designs and specifications are subject to change without notice.

FIBRELITE 
PART OF OPW A DOVER COMPANY



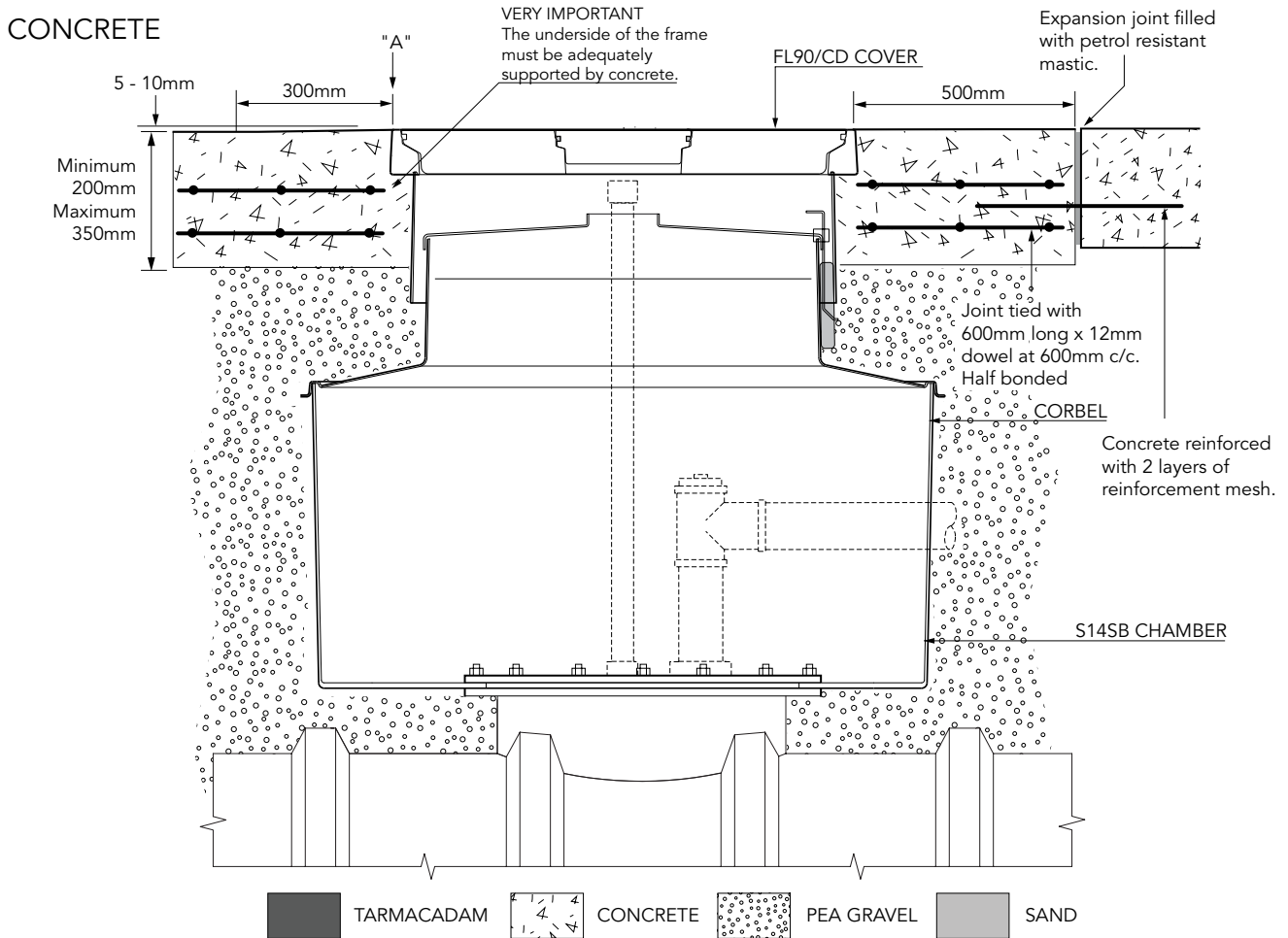
1.4m dia. chamber, corbel with a height adjustable skirt, non-structural internal lid, hand cap and round 900mm flat sealed cover with a central manual dip cover.

For reference purposes only. This drawing is not a specification. Order against product code only. To enable continuous improvement of our products, the designs and specifications are subject to change without notice.

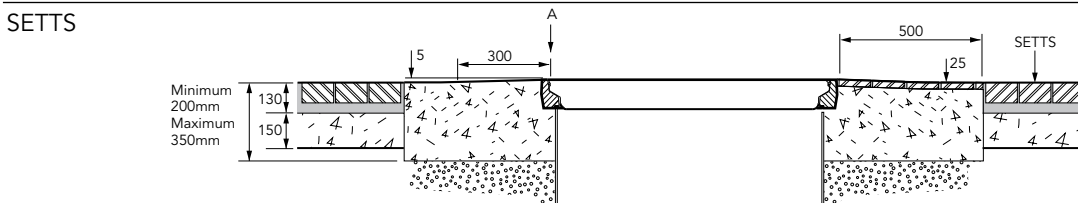
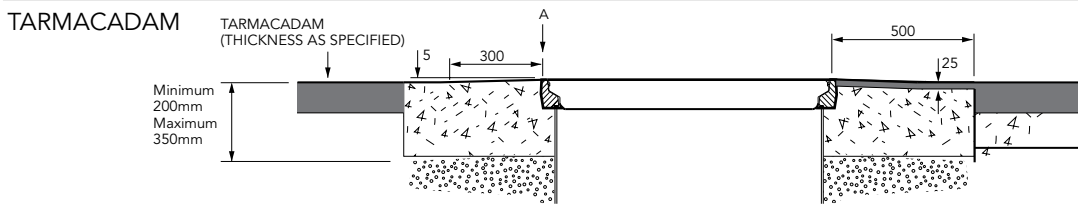
FIBRELITE 
 PART OF OPW A DOWDER COMPANY

! VERY IMPORTANT !
OUTER EDGE "A" OF FRAME SET 5 - 10MM
ABOVE GENERAL FORECOURT AREA WITH
CONCRETE RAMPED AWAY OVER 300MM.

TYPICAL INSTALLATION



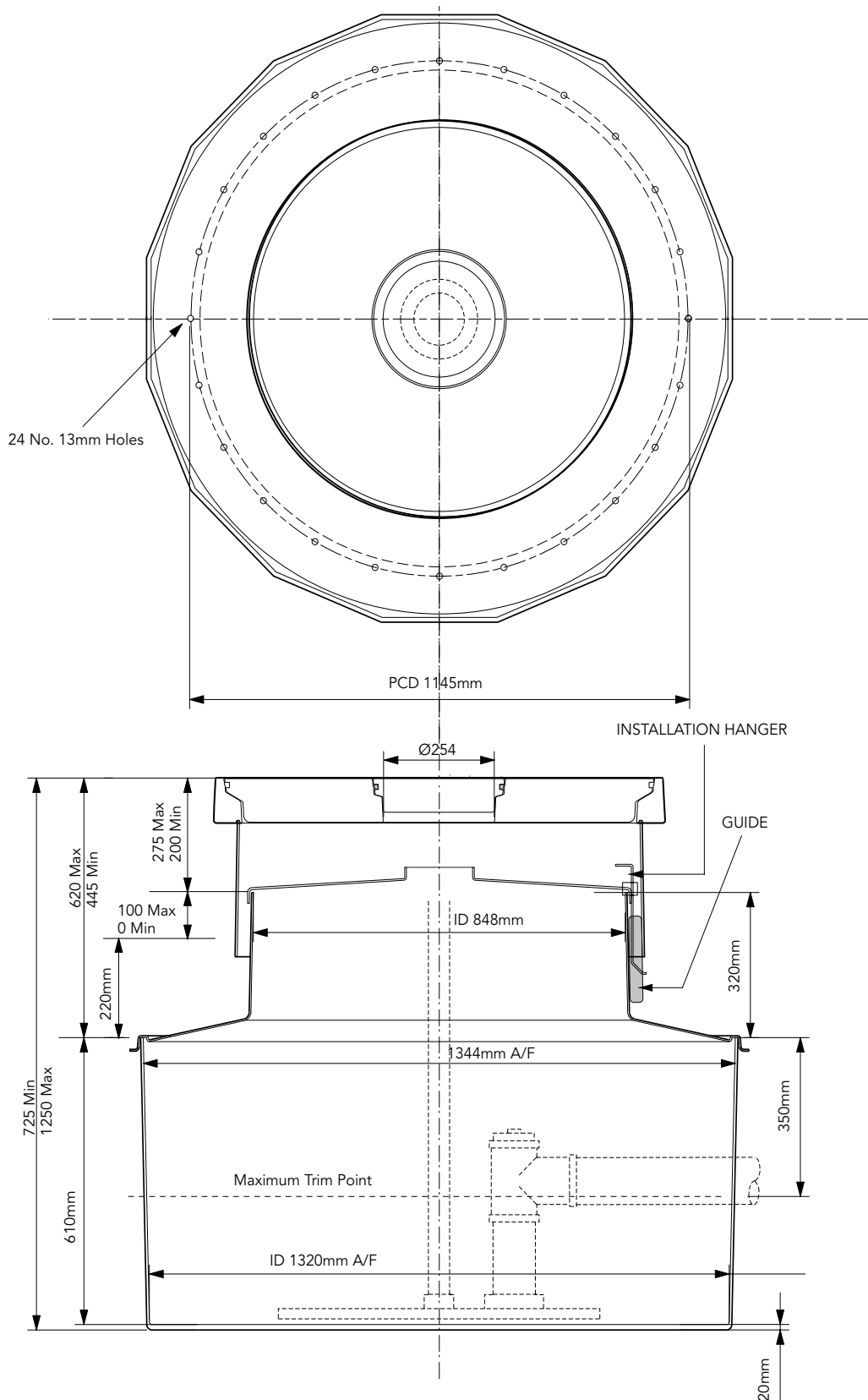
ALTERNATIVE INSTALLATION ADVICE



1.4m dia. chamber, corbel with a height adjustable skirt, non-structural internal lid, hand cap and round 900mm flat sealed cover with a central manual dip cover.

For reference purposes only. This drawing is not a specification. Order against product code only. To enable continuous improvement of our products, the designs and specifications are subject to change without notice.





1.4m dia. chamber, corbel with a height adjustable skirt, non-structural internal lid, hand cap and round 900mm flat sealed cover with a central manual dip cover.

For reference purposes only. This drawing is not a specification. Order against product code only. To enable continuous improvement of our products, the designs and specifications are subject to change without notice.

FIBRELITE 
PART OF OPW A DOWER COMPANY