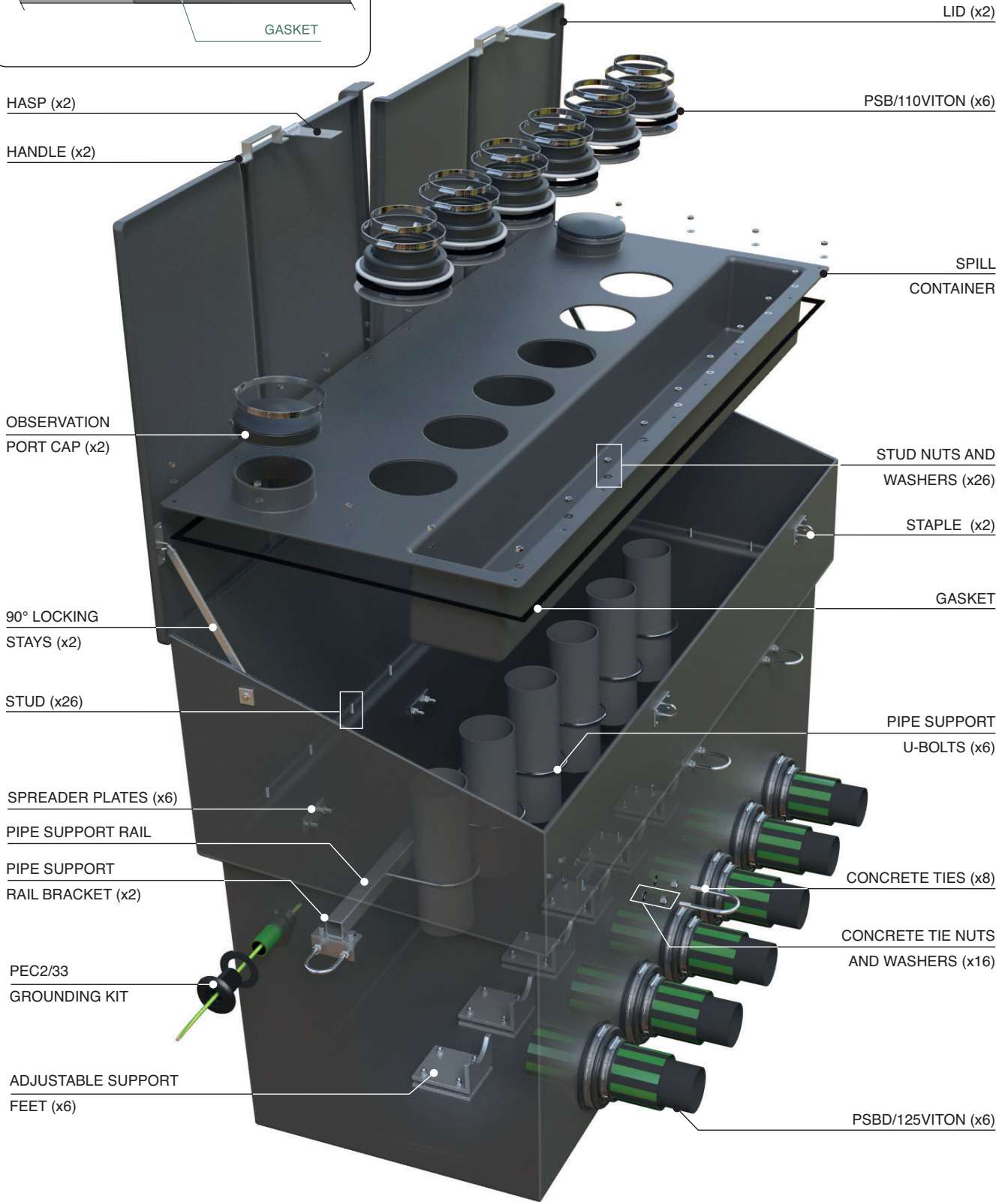
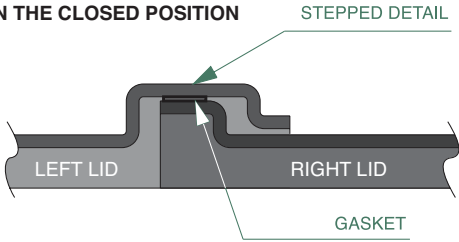


1737 x 686 x 1257mm deep GRP above ground fill sump with hinged double door to fit up to 6 fill lines. System includes internal spill tray, pipework support rail and concrete tie fixings.

For reference purposes only. This drawing is not a specification. Order against product code only. To enable continuous improvement of our products, the designs and specifications are subject to change without notice.

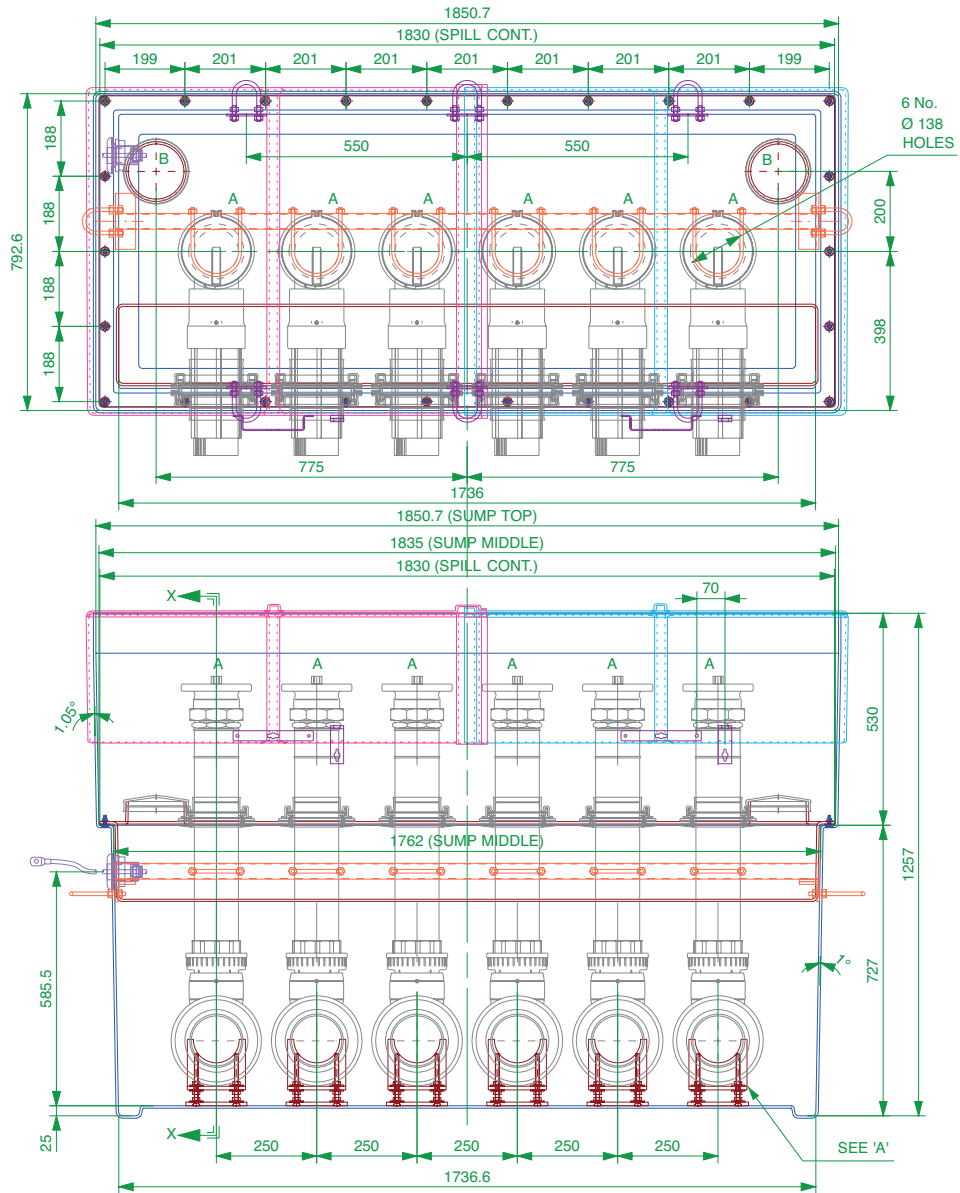
FIBRELITE 
PART OF OPW A DOVER COMPANY

**LID INTERFACE DETAIL
IN THE CLOSED POSITION**

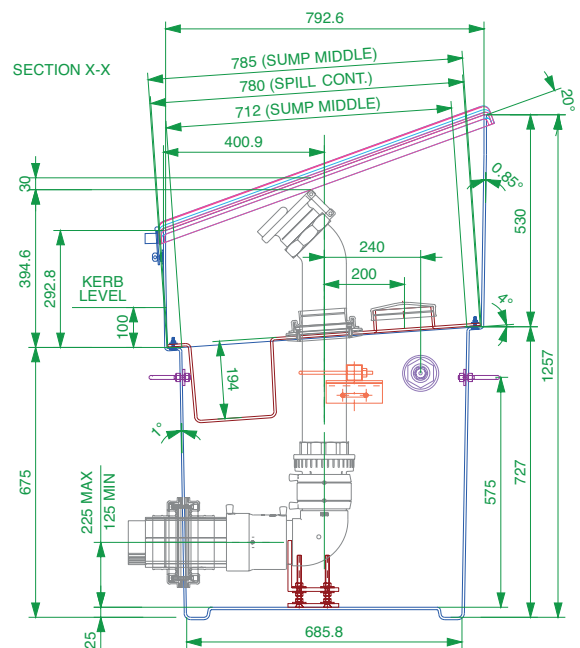
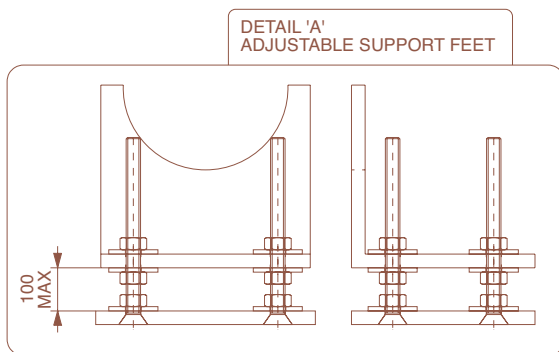


1737 x 686 x 1257mm deep GRP above ground fill sump with hinged double door to fit up to 6 fill lines. System includes internal spill tray, pipework support rail and concrete tie fixings.

For reference purposes only. This drawing is not a specification. Order against product code only. To enable continuous improvement of our products, the designs and specifications are subject to change without notice.



A = Ø110/Ø125 FILL LINE (x6)
B = OBSERVATION PORT (x2)



1737 x 686 x 1257mm deep GRP above ground fill sump with hinged double door to fit up to 6 fill lines. System includes internal spill tray, pipework support rail and concrete tie fixings.

For reference purposes only. This drawing is not a specification. Order against product code only. To enable continuous improvement of our products, the designs and specifications are subject to change without notice.

FIBRELITE
PART OF OPW A DOWER COMPANY

CONCRETE

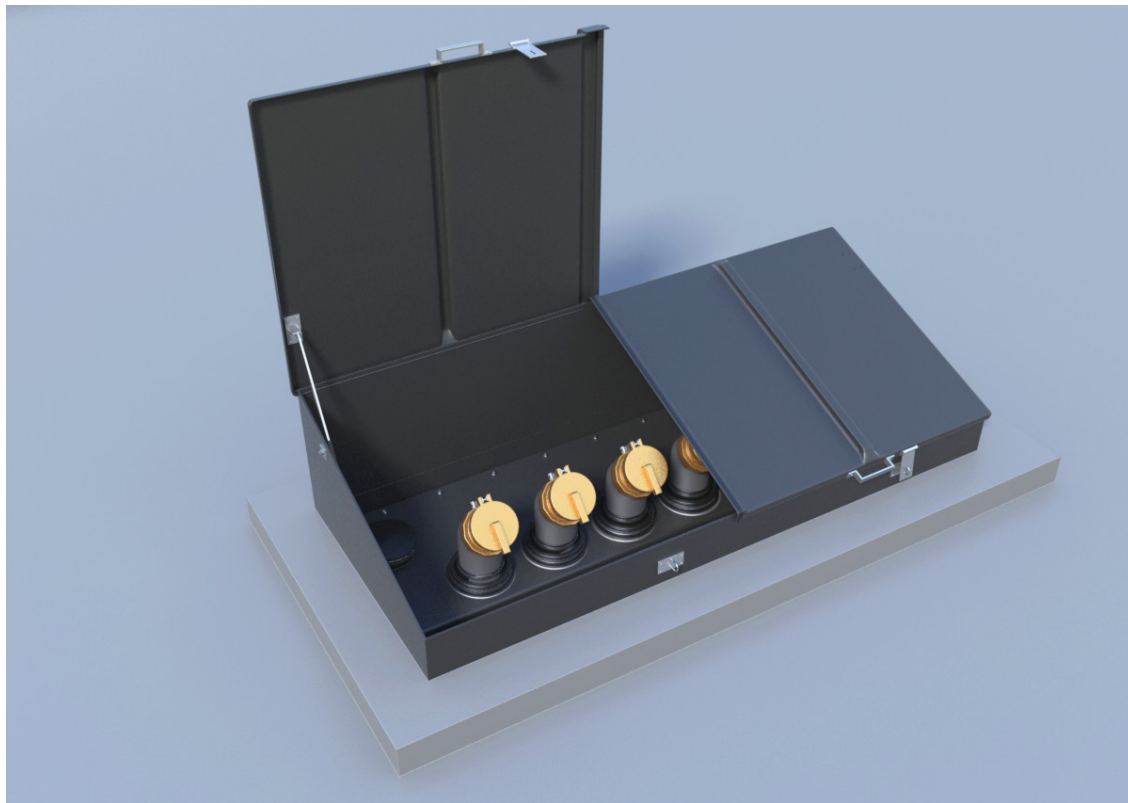
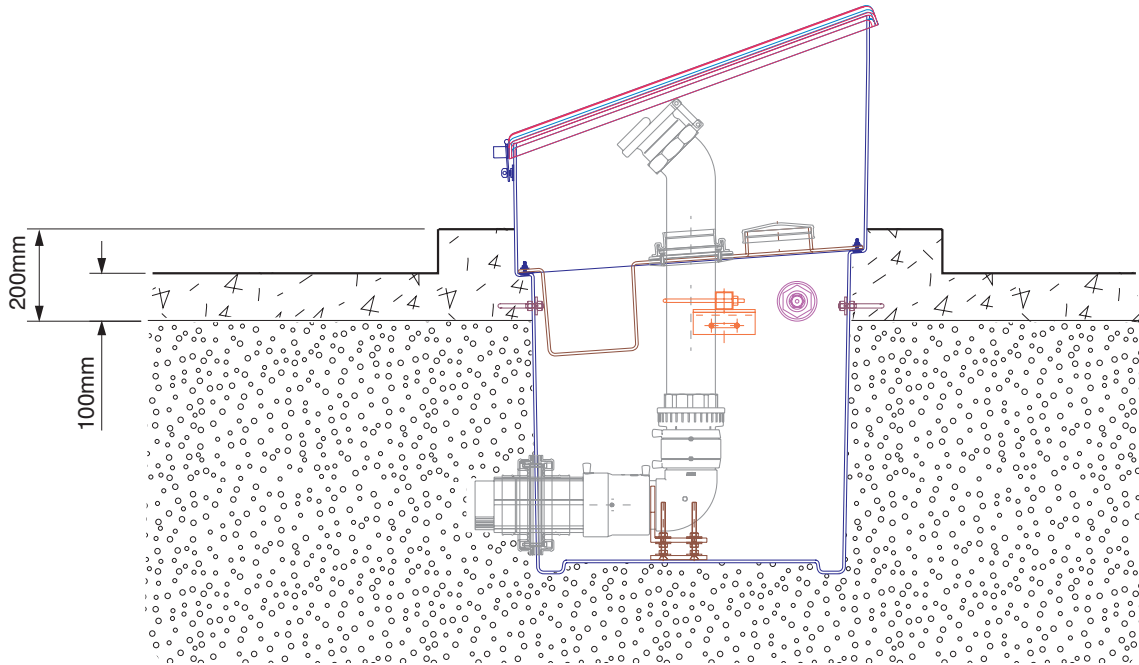
TYPICAL INSTALLATION



PEA GRAVEL



CONCRETE



1737 x 686 x 1257mm deep GRP above ground fill sump with hinged double door to fit up to 6 fill lines. System includes internal spill tray, pipework support rail and concrete tie fixings.

For reference purposes only. This drawing is not a specification. Order against product code only. To enable continuous improvement of our products, the designs and specifications are subject to change without notice.