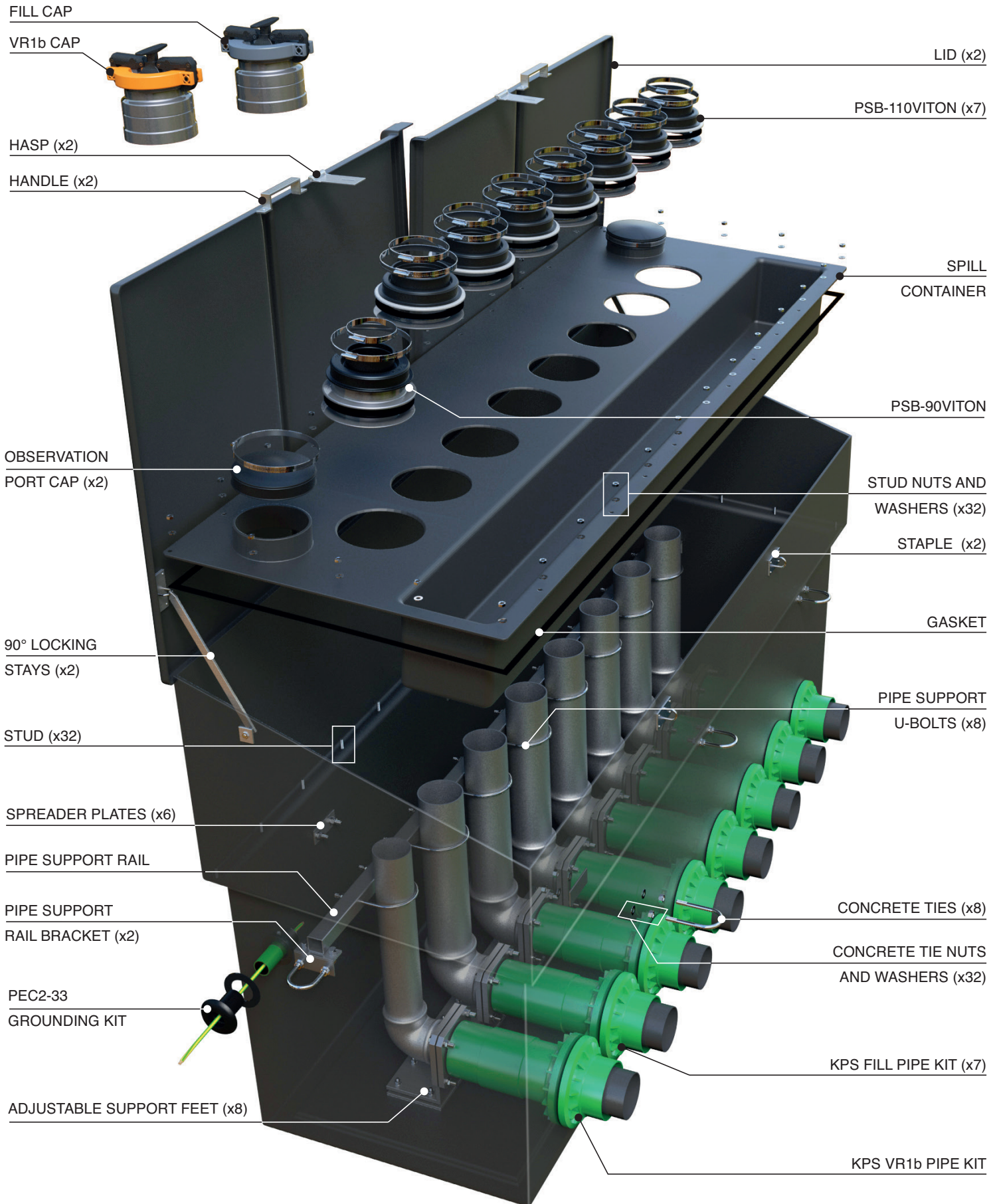


INSTALLATION INSTRUCTIONS

S22-2-AGF-K71 Above Ground Fill System

FIBRELITE 
PART OF OPW a **DOVER** company

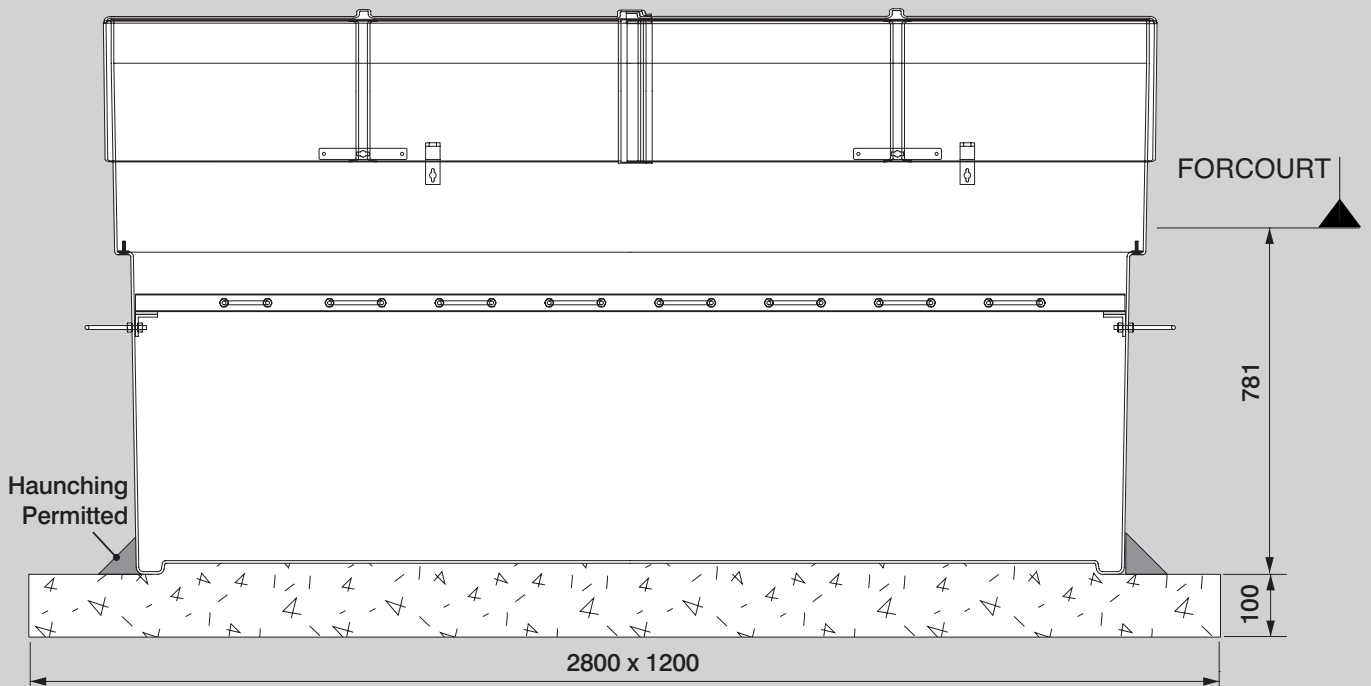


INSTALLATION INSTRUCTIONS

S22-2-AGF-K71 Above Ground Fill System

FIBRELITE 
PART OF OPW a **DOVER** company

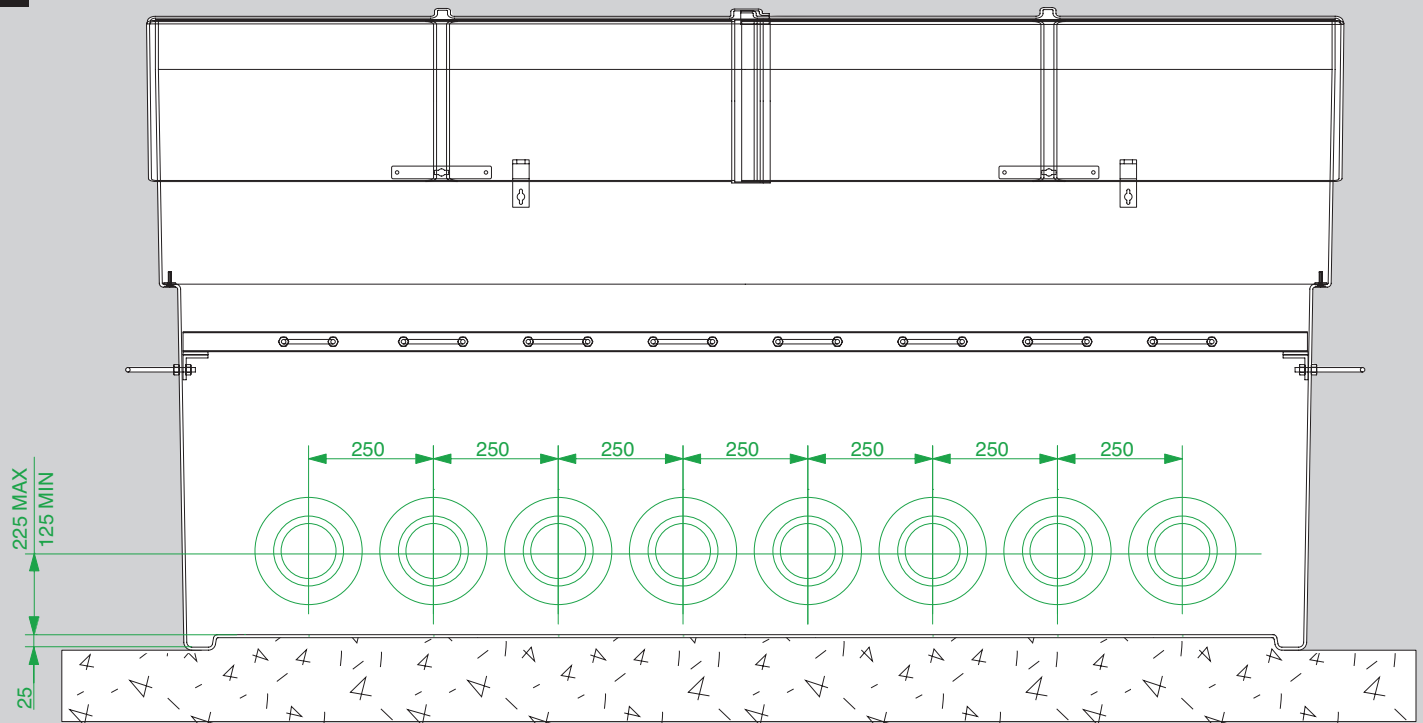
1



NB:- Sump should be embedded into the support base when installed.

Prepare concrete slab at the correct height and install the sump ensuring that it is level. Measurements from the external base of the sump to forecourt level must be adhered to.

2



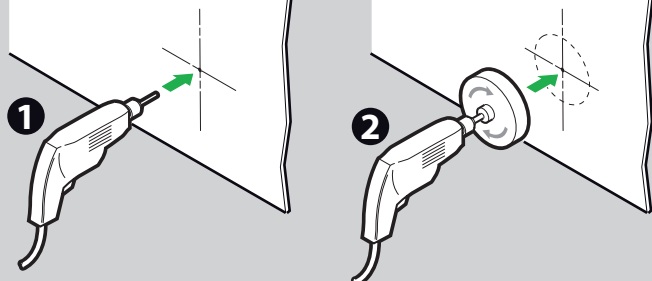
Mark out the required number of pipes in the sump.

INSTALLATION INSTRUCTIONS

S22-2-AGF-K71 Above Ground Fill System

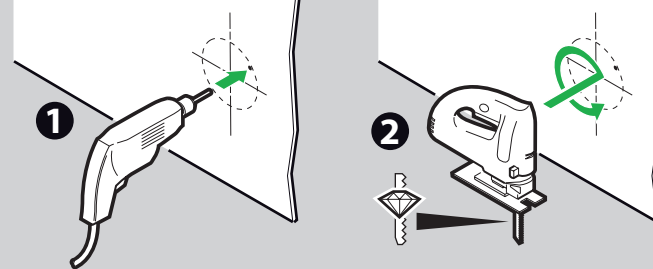
FIBRELITE 
PART OF OPW a **DOVER** company

3



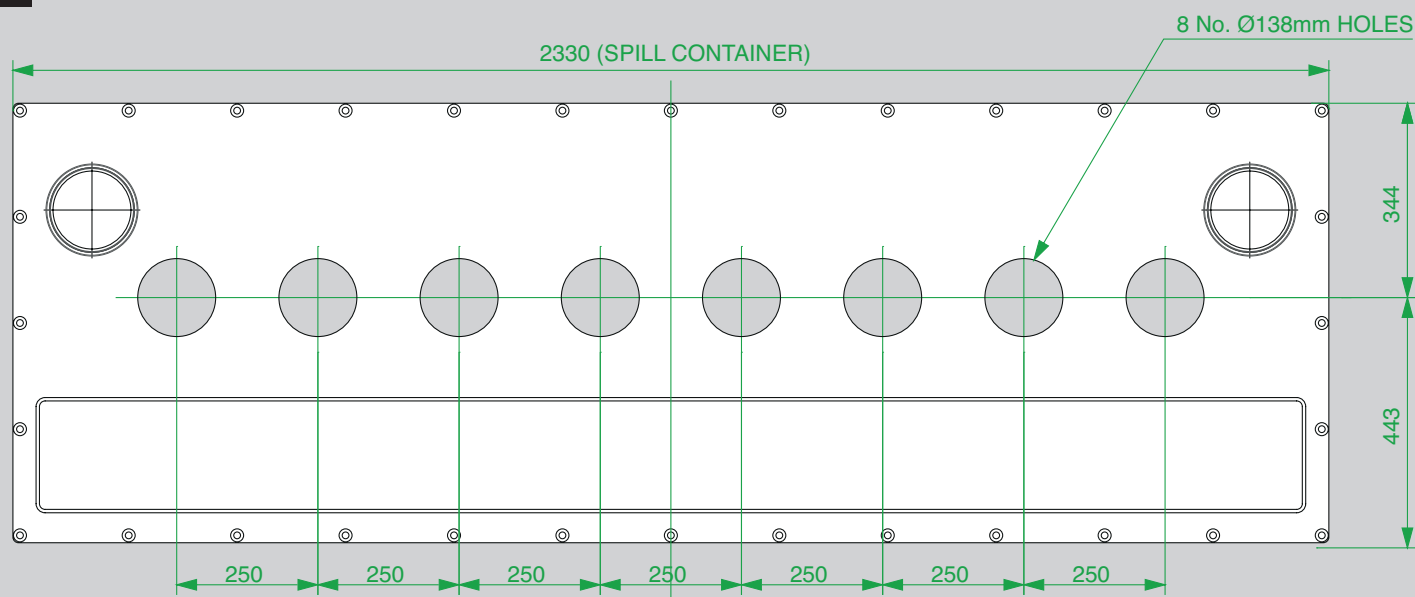
Drill a pilot hole to ensure the hole saw can be positioned and used safely.

4



For larger holes (190mm) we recommend that the hole is marked and jigsaw is used to cut the hole. Firstly, drill a hole through the wall, so the jigsaw can be inserted and used easily and safely.
(Fibreglass will blunt normal blades very quickly, we recommend diamond tipped blades or blades to cut ceramics).

5



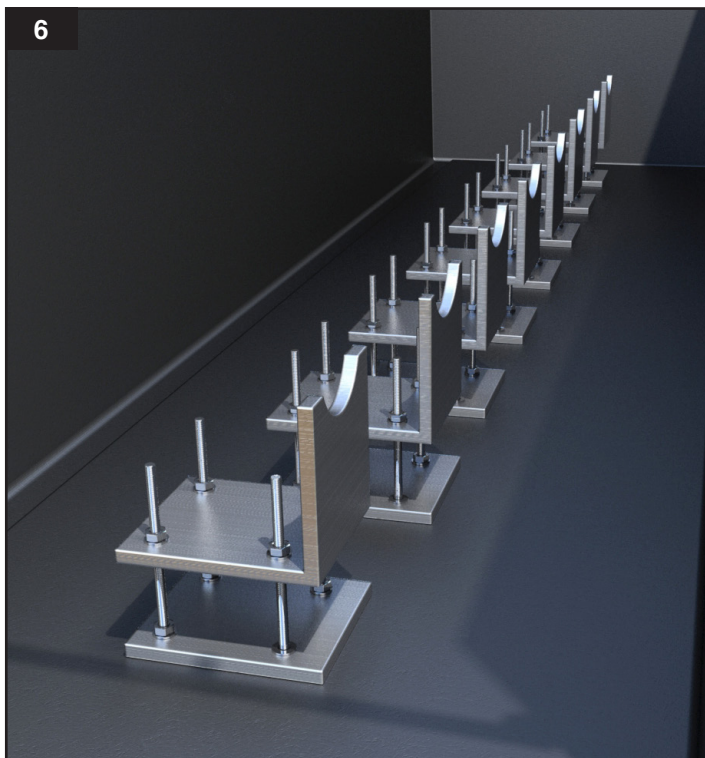
Mark out and drill 8 No. Ø138mm holes in the spill container as per step 3.

INSTALLATION INSTRUCTIONS

S22-2-AGF-K71 Above Ground Fill System

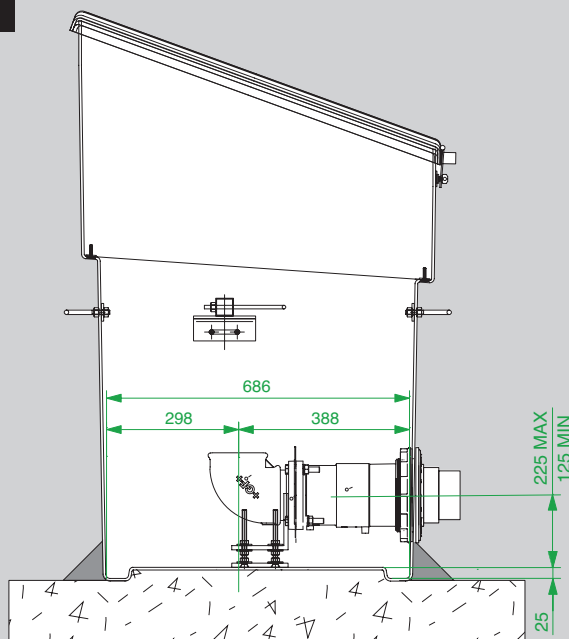
FIBRELITE 
PART OF OPW a **DOVER** company

6



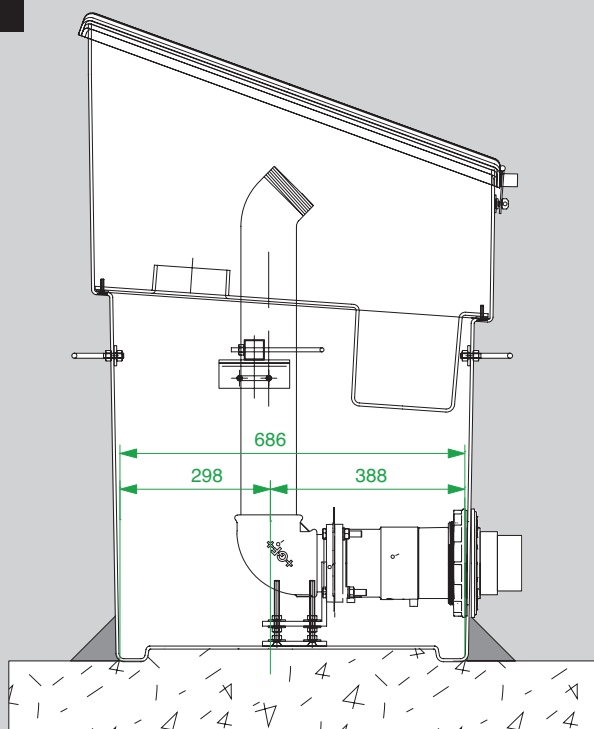
Place the support feet loosely into position.

7



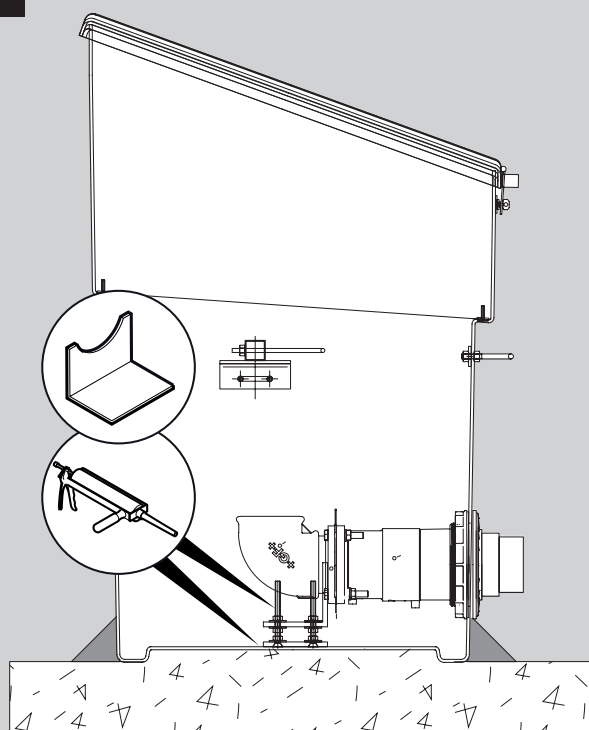
Install the horizontal section of the pipework, setting back the riser apertures 388mm from the front of the sump base.

8



Loosely fit the spill container and risers to make sure the elbow positions are correct. Once this is confirmed, remove the risers and spill container.

9



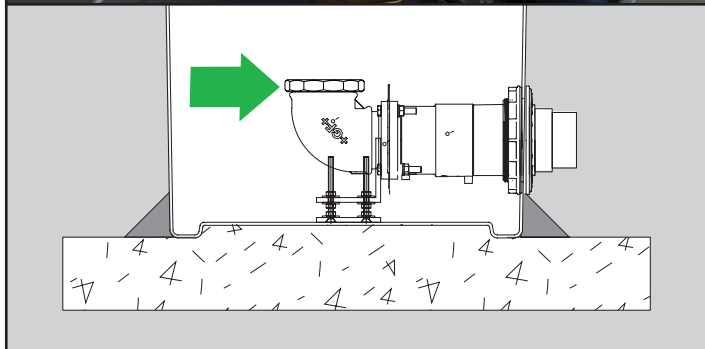
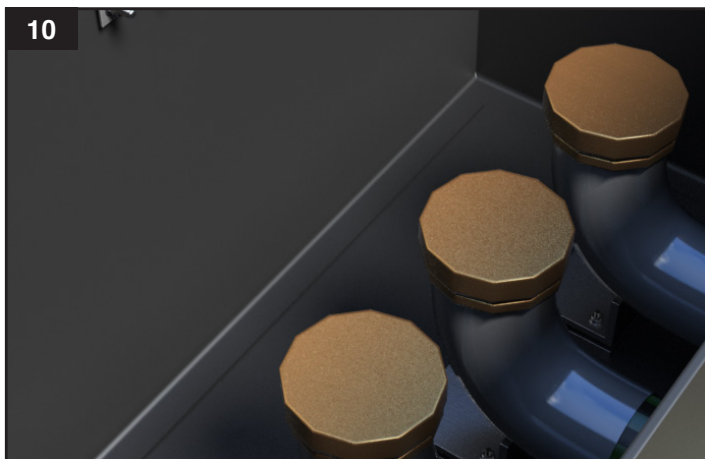
Bond the pipework support feet to the base of the sump with a small bead of sealant.

INSTALLATION INSTRUCTIONS

S22-2-AGF-K71 Above Ground Fill System

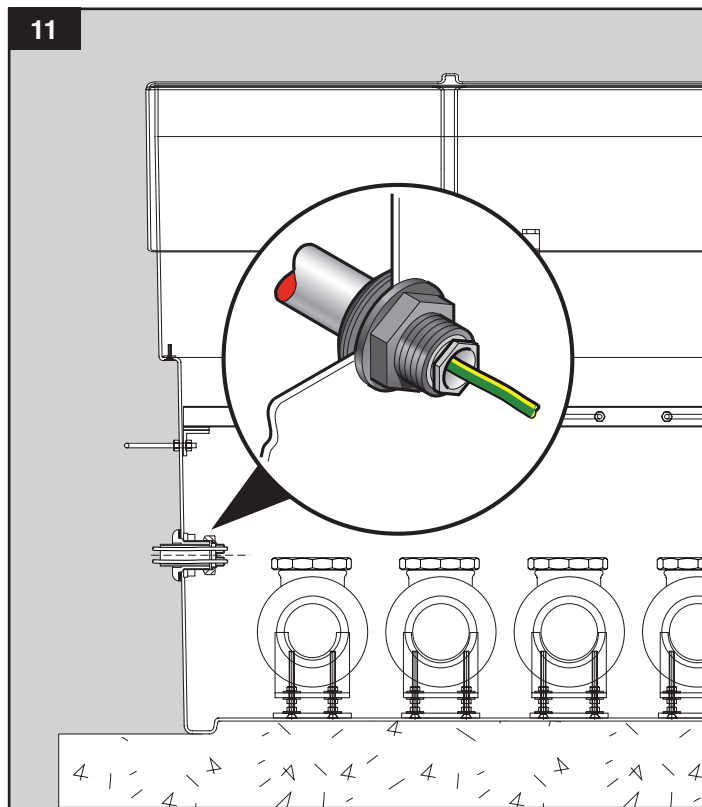
FIBRELITE 
PART OF OPW a **DOVER** company

10



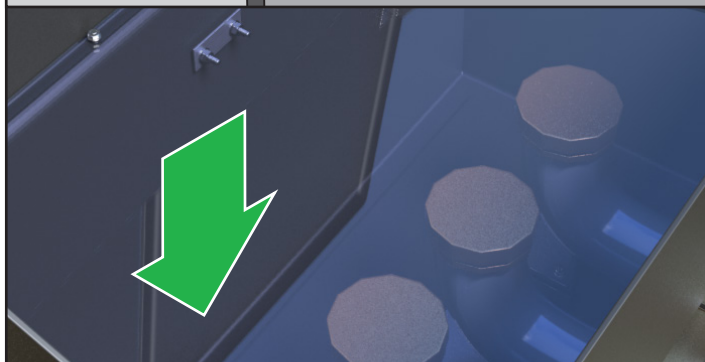
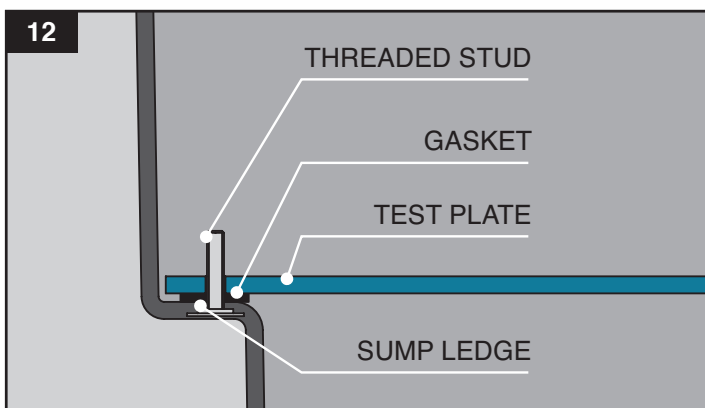
Plug off the 'open' pipework. NB: The pipework cannot be completed in the vertical stage until this test has been completed.

11



Make all electrical penetrations and connections inside the sump.

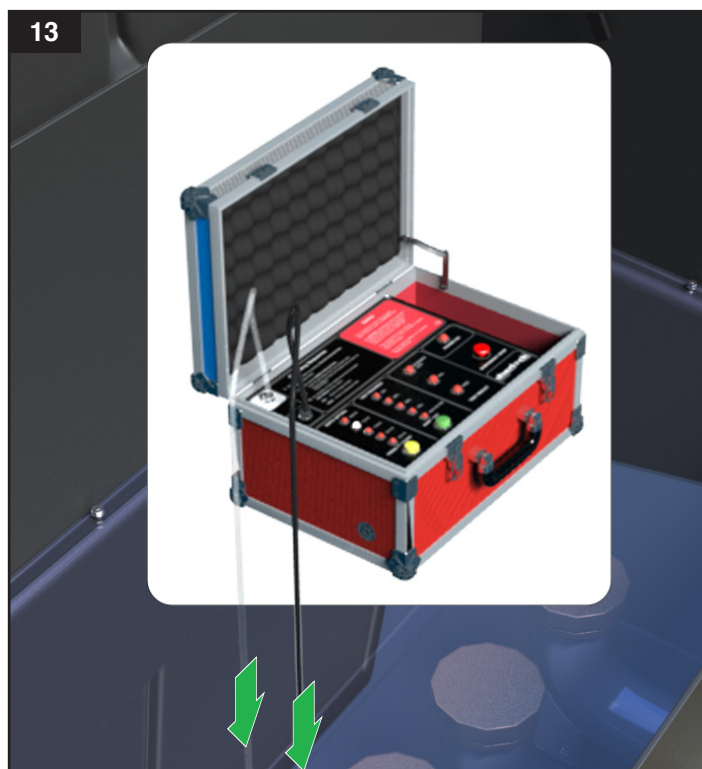
12



OPTIONAL TEST

Locate the test plate over the threaded studs on the sump ledge and fit.

13



OPTIONAL TEST

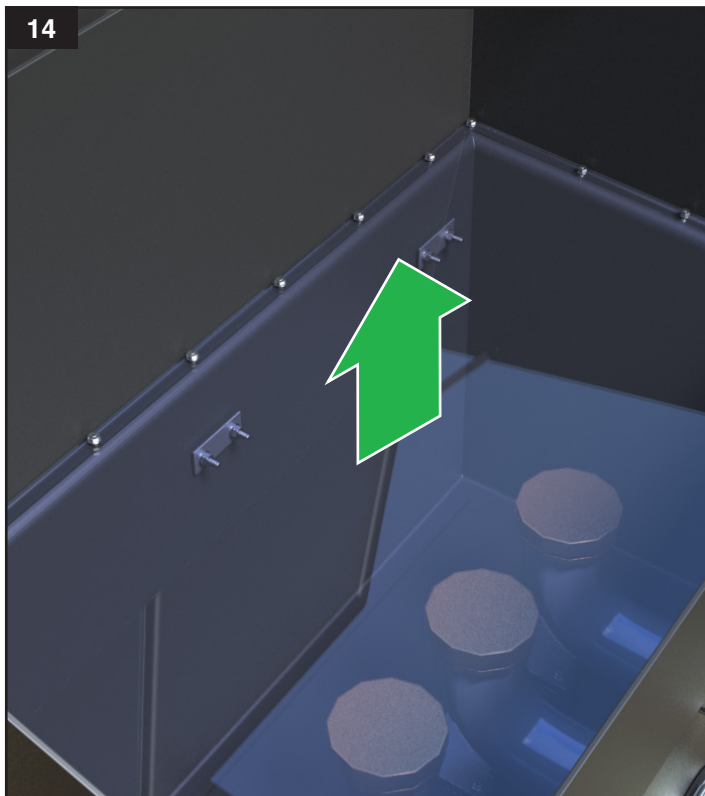
Connect the vacuum hoses to the plate and commence test. The test module must only be set to a depth setting of 0.6m.

INSTALLATION INSTRUCTIONS

S22-2-AGF-K71 Above Ground Fill System

FIBRELITE 
PART OF OPW a **DOVER** company

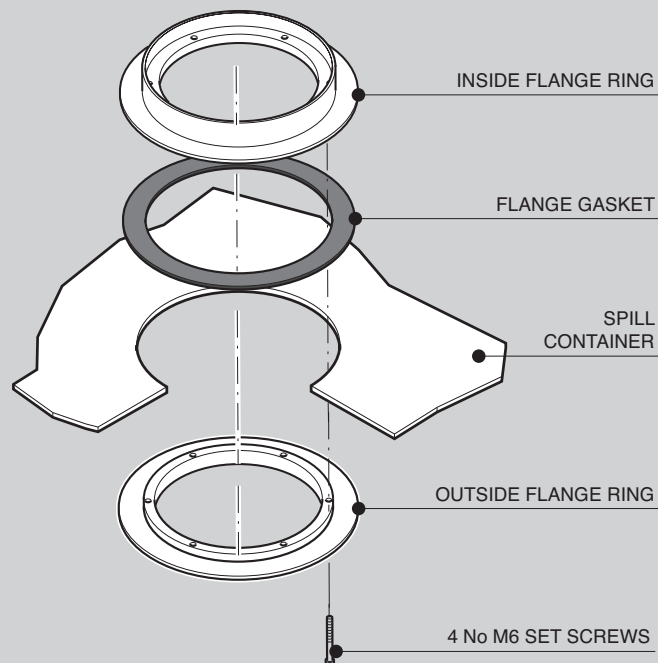
14



OPTIONAL TEST

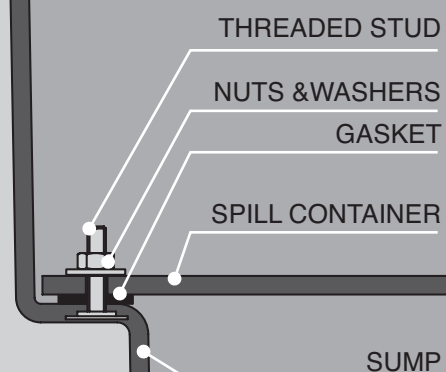
Once the test has been successfully passed, remove the spill container and pipe plugs.

15



Fit the above pipe seal kit components onto the spill container.

16



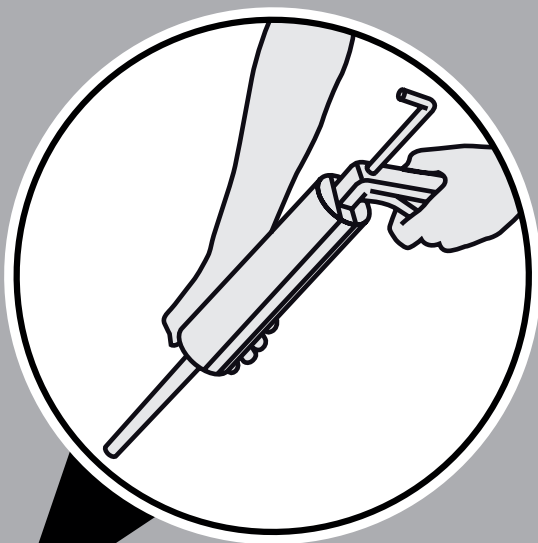
Fit the spill container ensuring that it is securely fitted to the sump with the gasket, bolts and washers.

INSTALLATION INSTRUCTIONS

S22-2-AGF-K71 Above Ground Fill System

FIBRELITE 
PART OF OPW a **DOVER** company

17



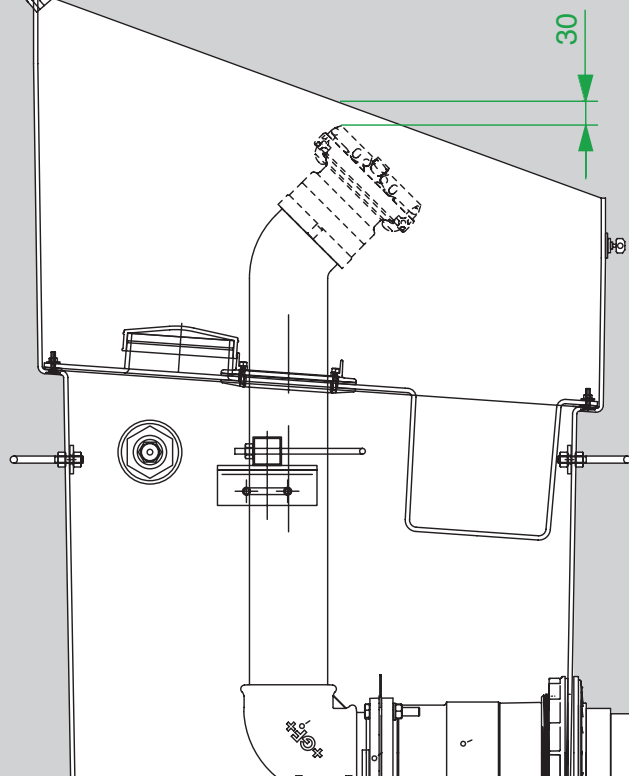
Seal around the edge of the spill platform to sump joint with 40FC Sealant.

18



Smooth off the sealant with soapy water.

19



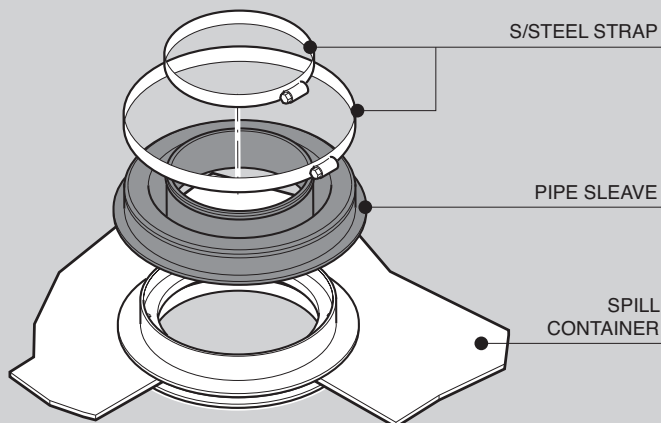
Cut the riser pipes at the threaded base so there is a minimum of 30mm clearance from the top of the caps to top of the sump.

INSTALLATION INSTRUCTIONS

S22-2-AGF-K71 Above Ground Fill System

FIBRELITE 
PART OF OPW a **DOVER** company

20



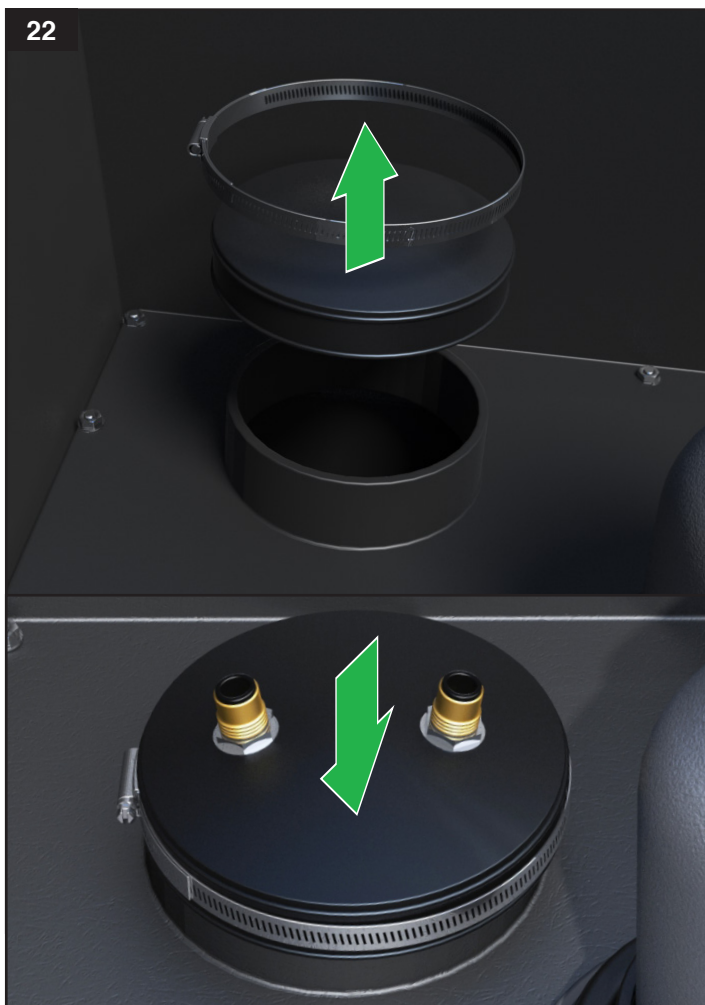
Secure and seal the risers by fitting the above pipe sealkit components onto the spill container.

21



Fit the fill and VR1b caps.

22



MANDATED TEST

Remove one of the inspection caps and replace it with the test cap. Ensure the other one is securely fitted.

23



MANDATED TEST

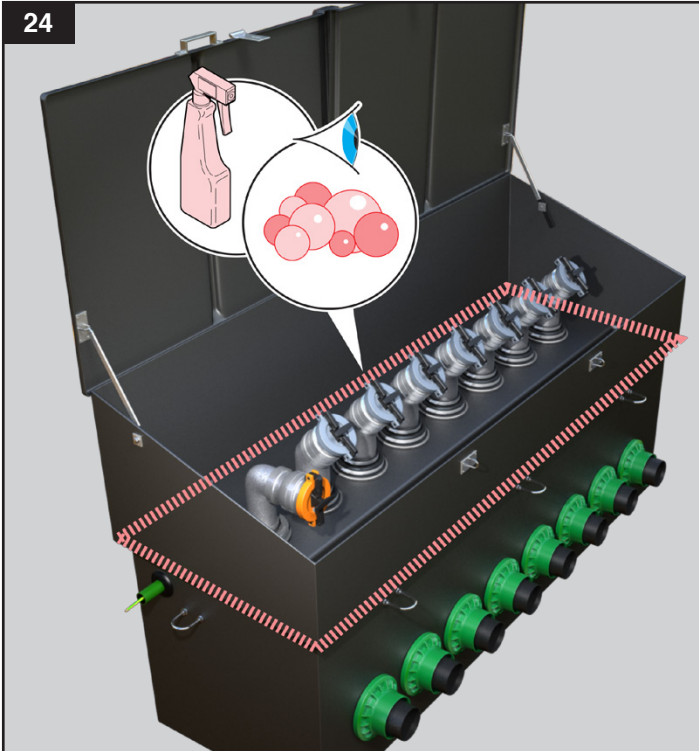
Connect the vacuum hoses and commence the test. The test module must only be set to a depth setting of 0.6m.

INSTALLATION INSTRUCTIONS

S22-2-AGF-K71 Above Ground Fill System

FIBRELITE 
PART OF OPW a **DOVER** company

24



MANDATED TEST

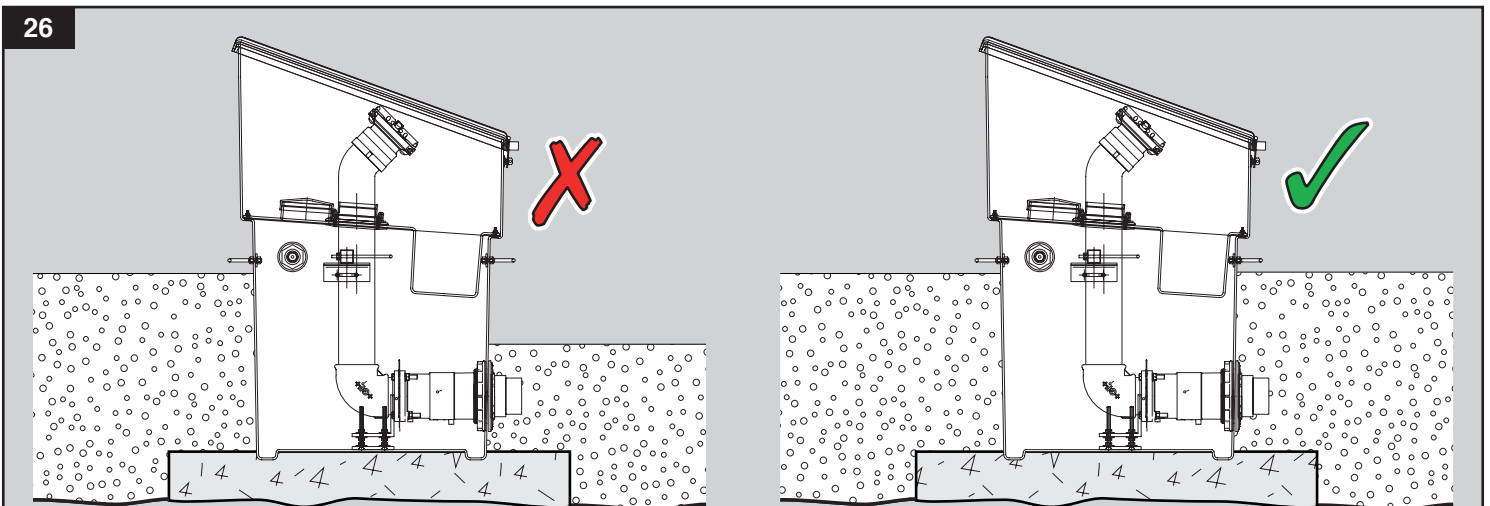
Leaks can be detected by spraying coloured dye on the outside of the spill container during the vacuum testing.

25



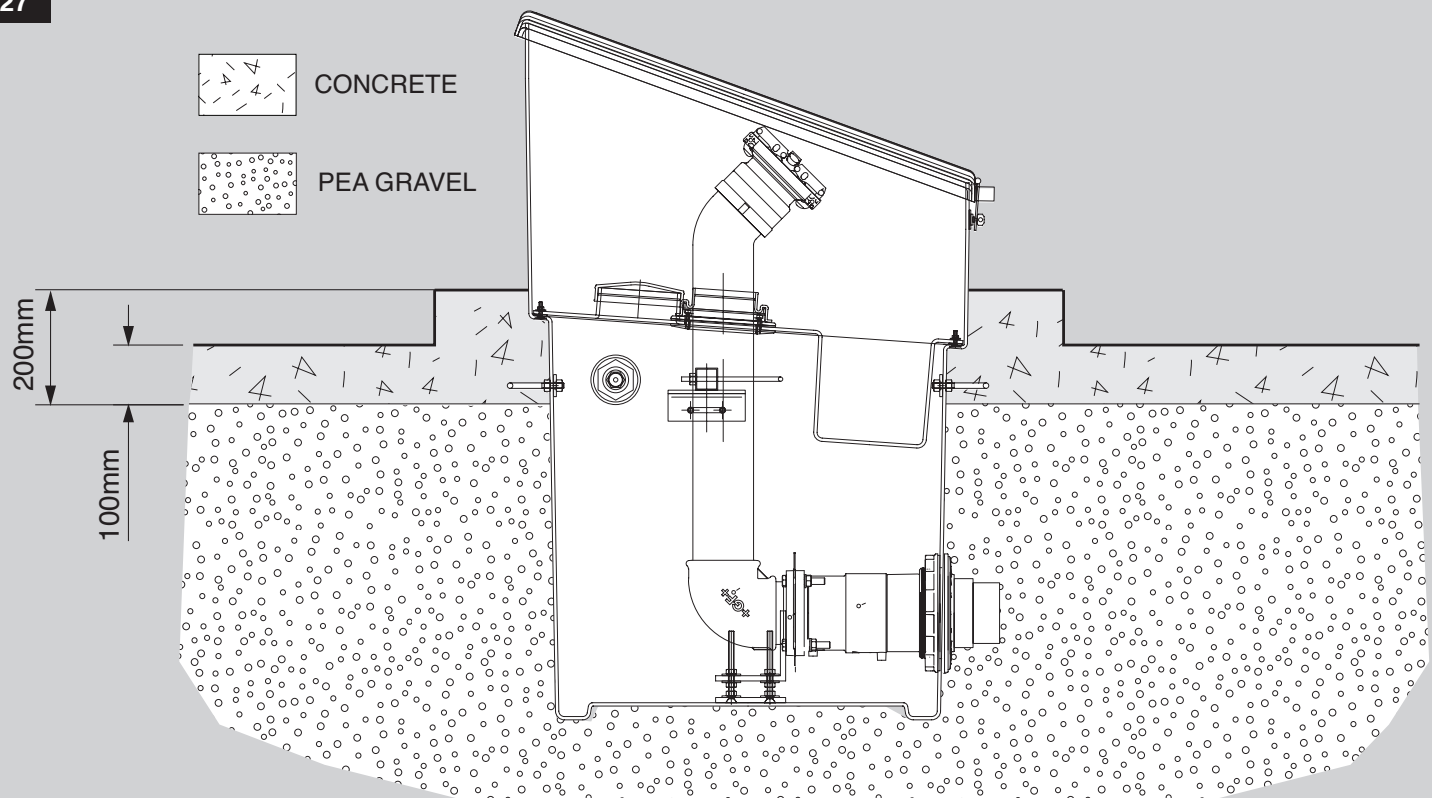
Remove the test cap and replace the inspection cap.

26



Carefully backfill the area around the sump with peag gravel or sand. Backfill equally around the sump in layers to prevent damage or deformation.

27



Lay concrete to the required specifications with 100mm step up from forecourt level.

