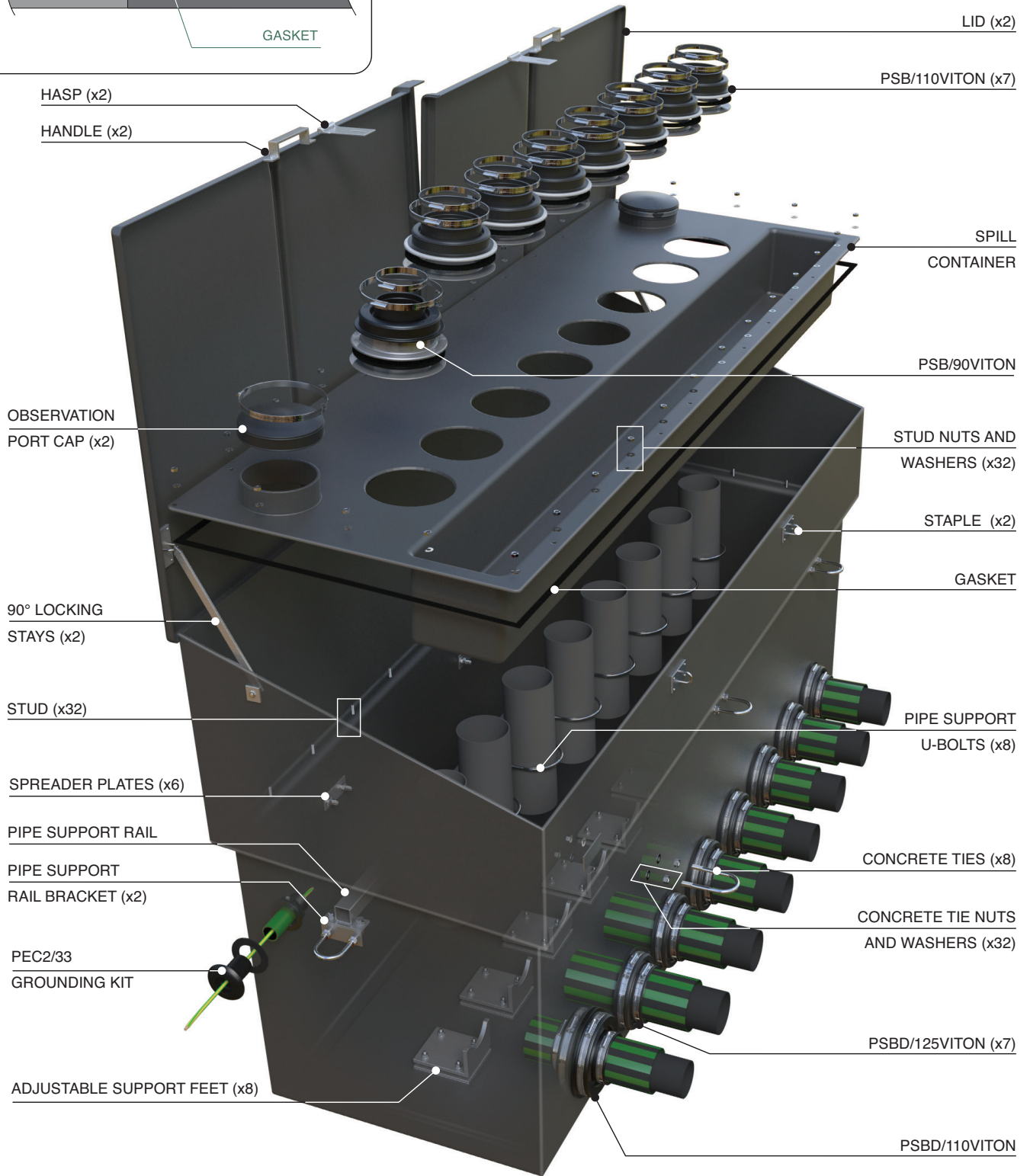
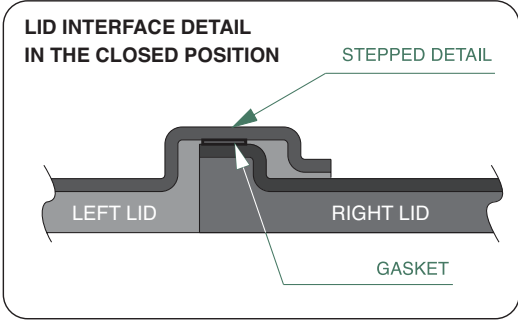


2237 mm x 686 mm x 1257 mm deep GRP above ground fill sump with hinged double door to fit up to 7 fill lines and 1 VR1b line. System includes internal spill tray, pipework support rail and concrete tie fixings. Designed to fit UPP pipework.

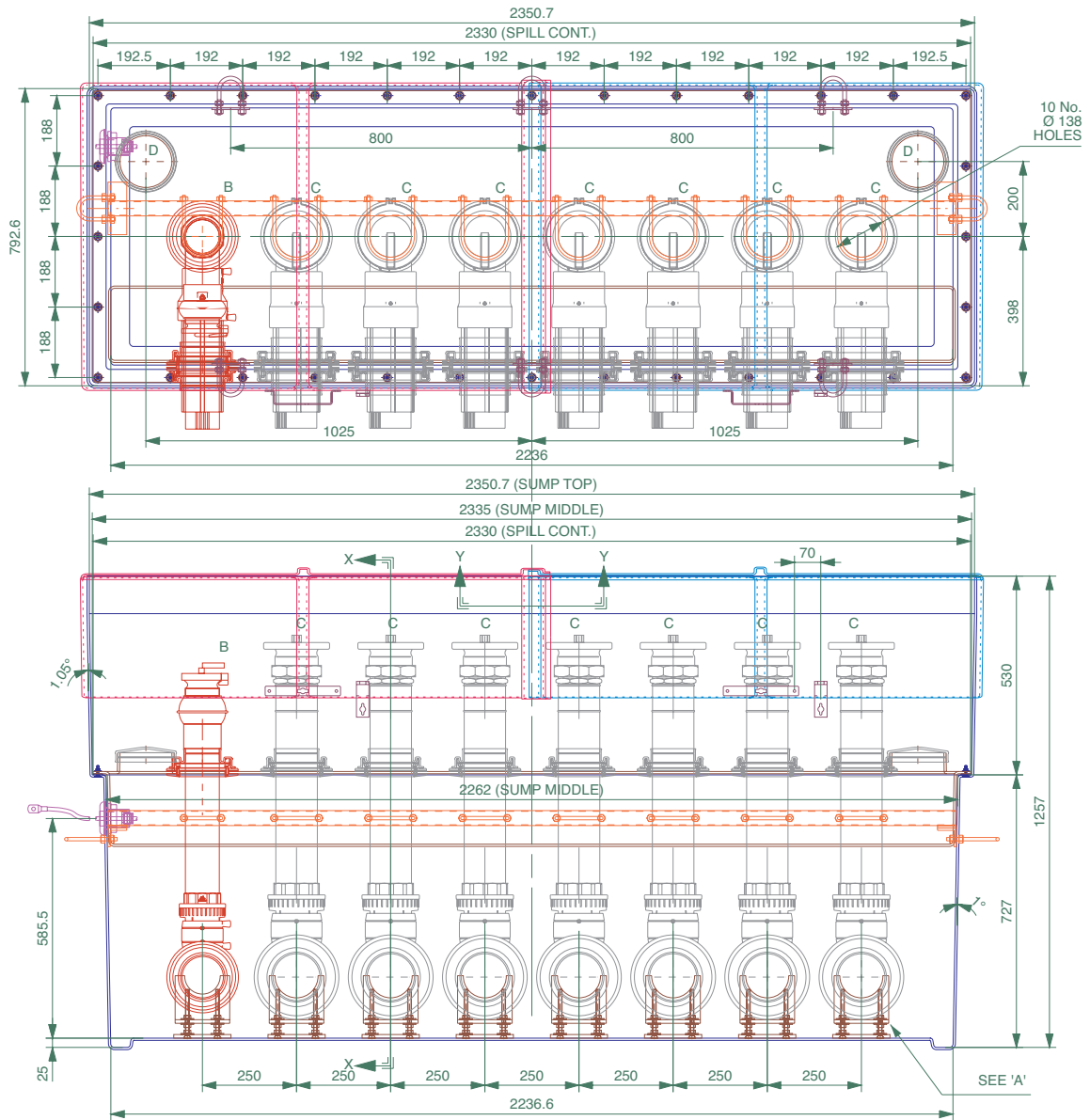
For reference purposes only. This drawing is not a specification. Order against product code only. To enable continuous improvement of our products, the designs and specifications are subject to change without notice.

FIBRELITE 
PART OF OPW A DOVER COMPANY



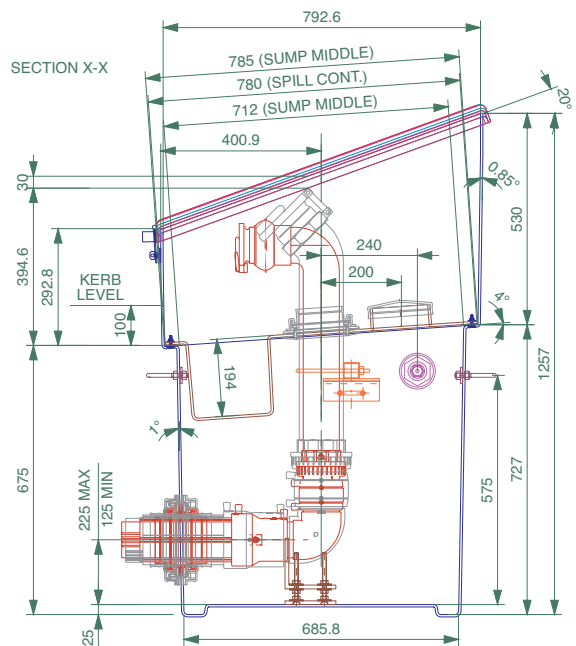
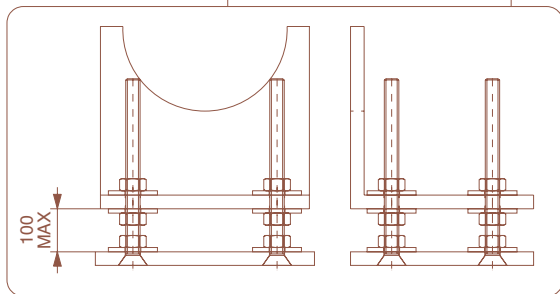
2237 mm x 686 mm x 1257 mm deep GRP above ground fill sump with hinged double door to fit up to 7 fill lines and 1 VR1b line. System includes internal spill tray, pipework support rail and concrete tie fixings. Designed to fit UPP pipework.

For reference purposes only. This drawing is not a specification. Order against product code only. To enable continuous improvement of our products, the designs and specifications are subject to change without notice.



B = Ø90/Ø110 VR1b
 C = Ø110/Ø125 FILL LINE (x7)
 D = OBSERVATION PORT (x2)

DETAIL 'A'
 ADJUSTABLE SUPPORT FEET
 SCALE 1:5



2237 mm x 686 mm x 1257 mm deep GRP above ground fill sump with hinged double door to fit up to 7 fill lines and 1 VR1b line. System includes internal spill tray, pipework support rail and concrete tie fixings. Designed to fit UPP pipework.

For reference purposes only. This drawing is not a specification. Order against product code only. To enable continuous improvement of our products, the designs and specifications are subject to change without notice.

FIBRELITE
 PART OF OPW A DOVER COMPANY

CONCRETE

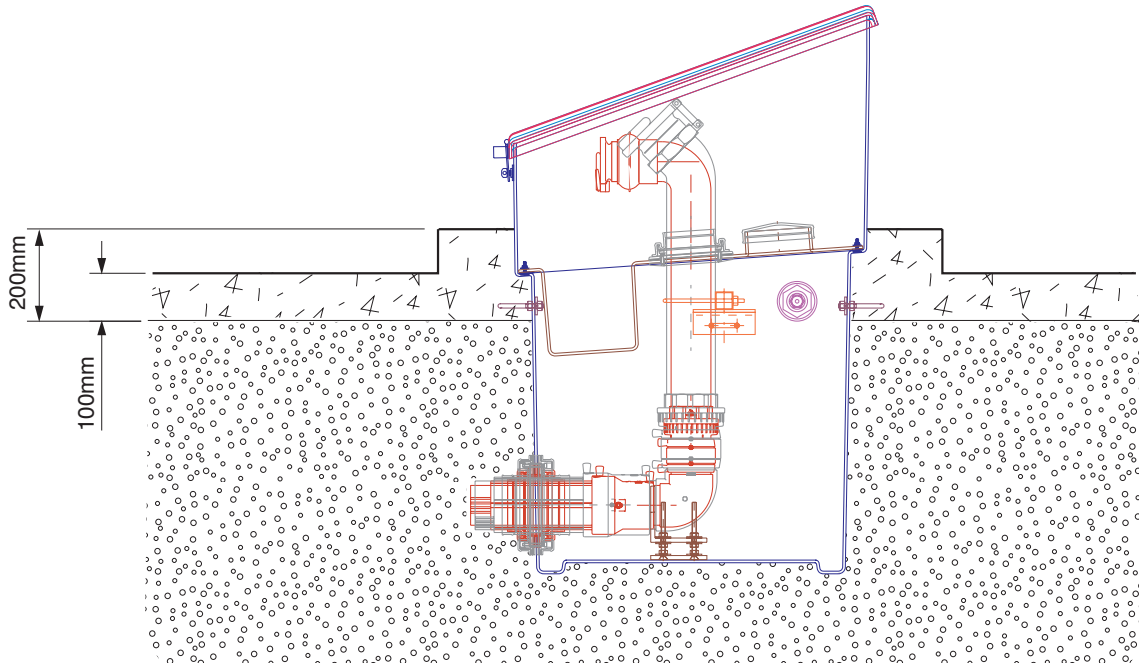
TYPICAL INSTALLATION



PEA GRAVEL



CONCRETE



2237 mm x 686 mm x 1257 mm deep GRP above ground fill sump with hinged double door to fit up to 7 fill lines and 1 VR1b line. System includes internal spill tray, pipework support rail and concrete tie fixings. Designed to fit UPP pipework.

For reference purposes only. This drawing is not a specification. Order against product code only. To enable continuous improvement of our products, the designs and specifications are subject to change without notice.