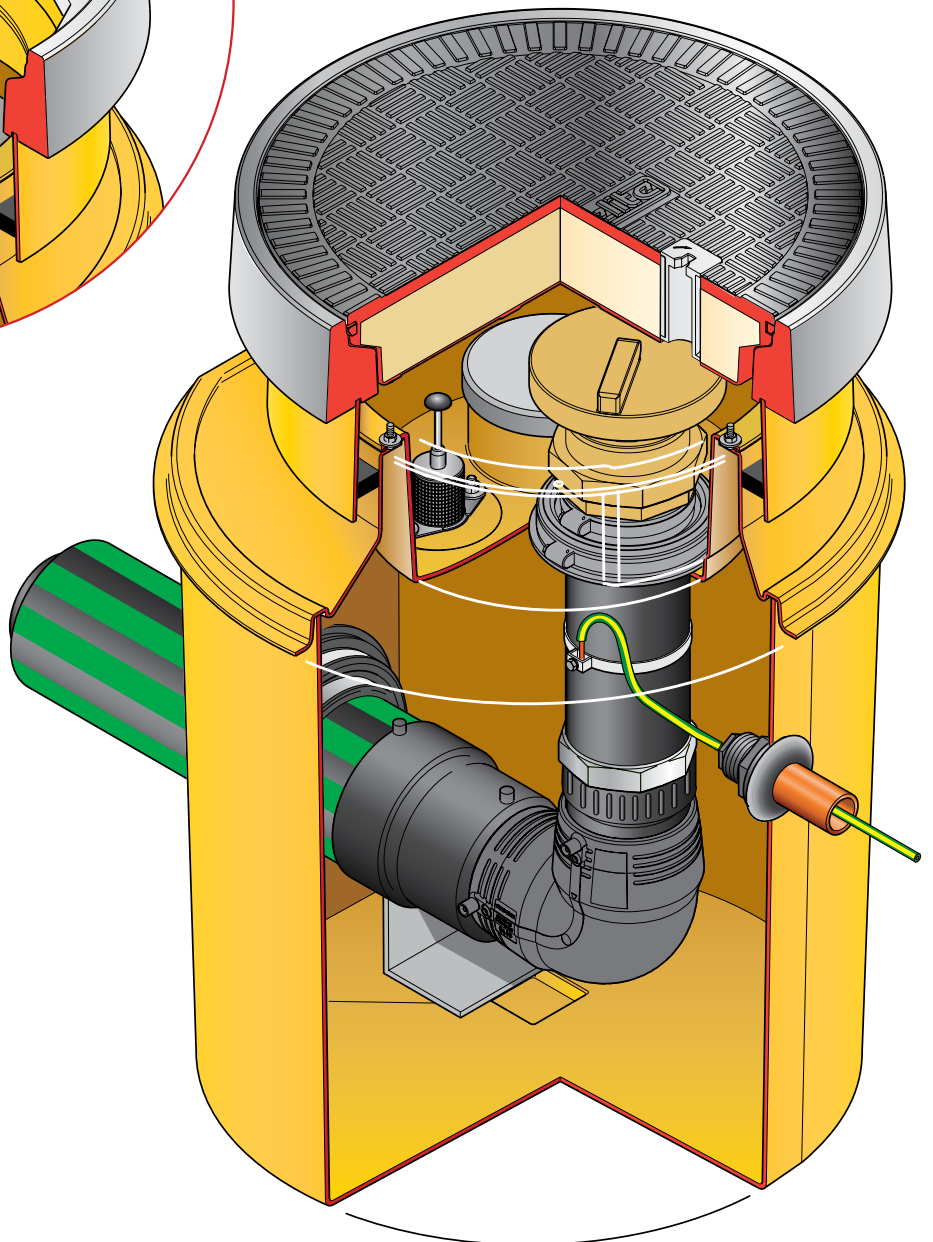


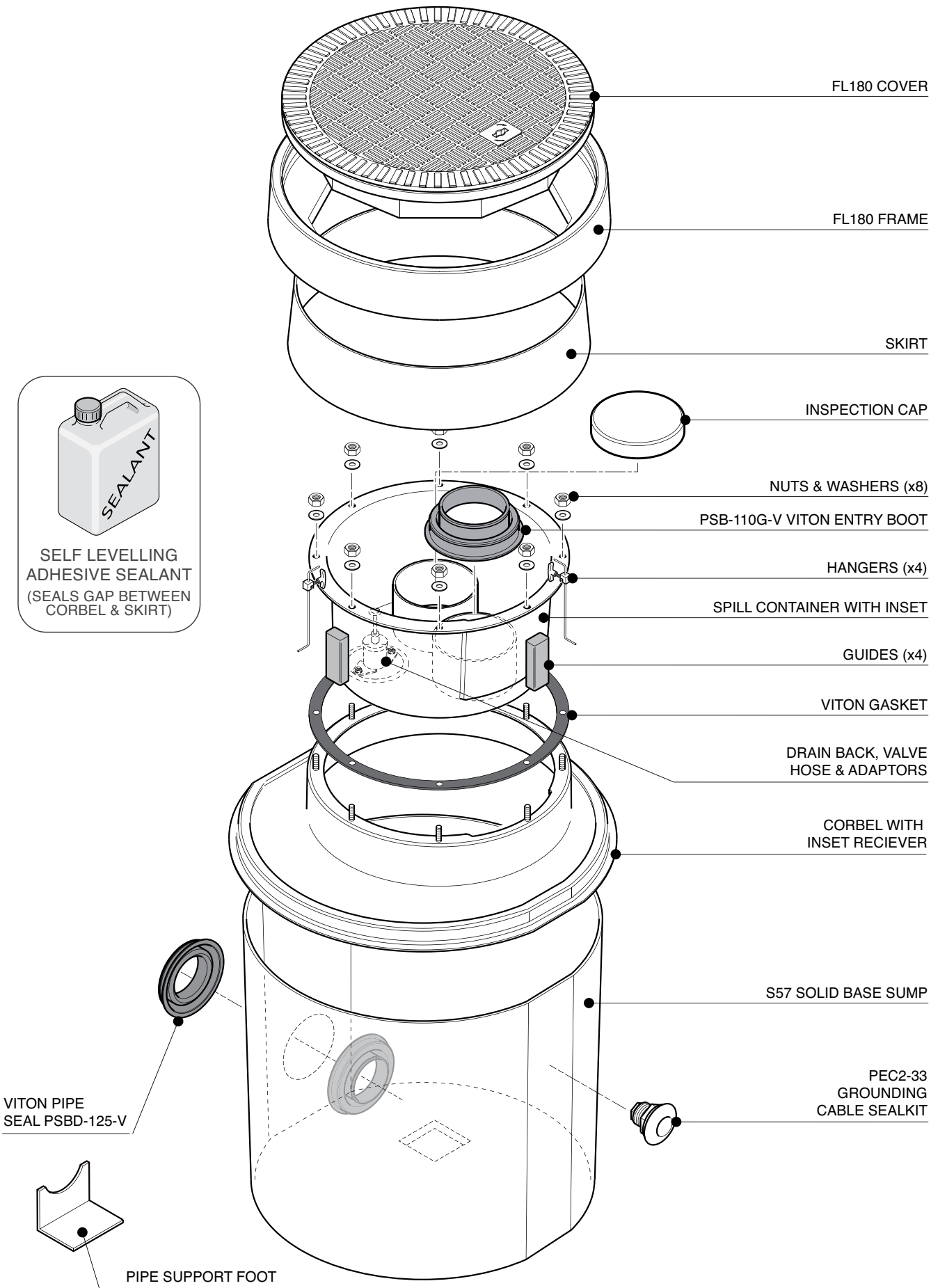
THE SPILL CONTAINER AND AND CORBEL CONTAIN
A SPECIAL INSET SECTION TO ALLOW FOR EASY
ACCESS OF GOOSENECK DELIVERY HOSES



Secondary contained remote fill sump. 583mm dia. x 635mm deep solid base sump with a sealed secondary spill container with integrated drainback system. 450mm dia flat sealed cover and frame. Sealkits included.

For reference purposes only. This drawing is not a specification. Order against product code only. To enable continuous improvement of our products, the designs and specifications are subject to change without notice.

FIBRELITE 
PART OF OPW A DOVER COMPANY



Secondary contained remote fill sump. 583mm dia. x 635mm deep solid base sump with a sealed secondary spill container with integrated drainback system. 450mm dia flat sealed cover and frame. Sealkits included.

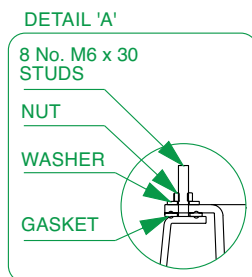
For reference purposes only. This drawing is not a specification. Order against product code only. To enable continuous improvement of our products, the designs and specifications are subject to change without notice.

FIBRELITE 
PART OF OPW A DOVER COMPANY

ITEM	DESCRIPTION	CODE	QTY
1	Fibrelite FL180 Cover	FL180	1
2	Fibrelite FL180 Frame	FL180F	1
3	Fibrelite 130mm Deep Skirt	FL180-SK130	1
4	Spill Container Gasket	--	1
5	Fibrelite Self levelling Seal	S-CS-SEALANT	1
6	Fibrelite Corbel	S57-3180-CORBEL	1
7	Fibrelite Spill Container	S57-3180-OF-SC	1
8	Fibrelite Inspection Cap	--	1
9	Fibrelite Grounding Cable Seal	PEC2-33	1
10	Fibrelite Grounding Cable Strap	--	1
11	Fibrelite 570 x 635mm deep Sump	S57	1
12	Fibrelite Pipe Support Foot	PSF-110	1

ITEM	4" FILL	CODE	QTY
13	Fibrelite Viton Ø125mm Double Sided Pipe Entry Seal	PSBD-125-V	1
14	Riser Pipe 4"	001-110-XXX-E	1
15	EN Pipe - 125mm Secondary	000-125-XXX-SC-E	1
16	Primary 90° Elbow	03-110-EIF	1
17	REDUCER	49-125-110-TP	1
18	110mm 4" Female	92-110-BSPT	1
19	CAP,ANTI-STATIC,12	ESI-CAP-012	6
20	PSB-110G Viton Entry Boot	PSB-110G-V	1

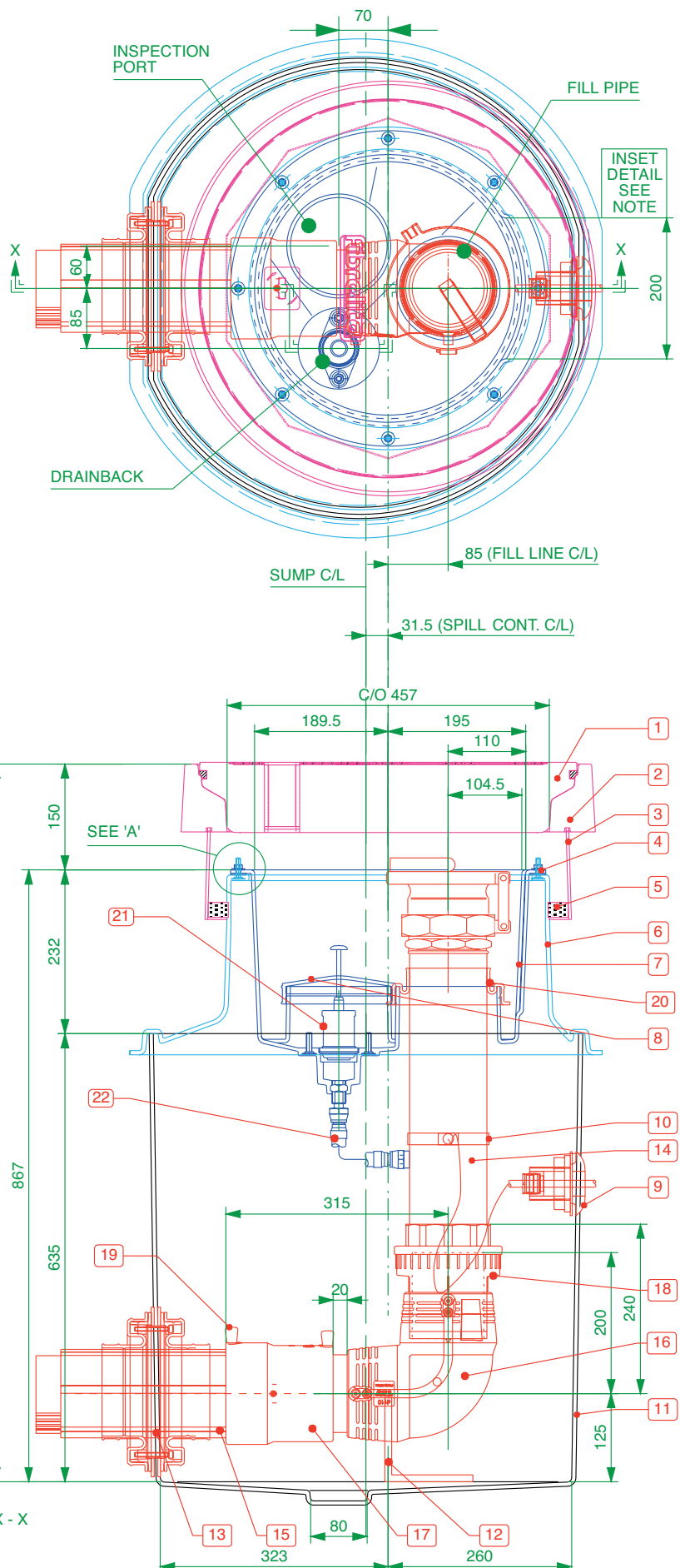
No.	DRAIN BACK	QTY
21	Draw Back valve	1
22	Drainback hose kit, consisting of; flexible drain back hose, 1/2" BSPT male x male cone faced adaptor, 1/2" BSP 1/2 socket	1



**Spill Containment
Capacity = 22 Litres**

NOTE:

THE SPILL CONTAINER AND CORBEL CONTAIN A SPECIAL INSET SECTION TO ALLOW FOR EASY ACCESS OF GOOSENECK DELIVERY HOSES

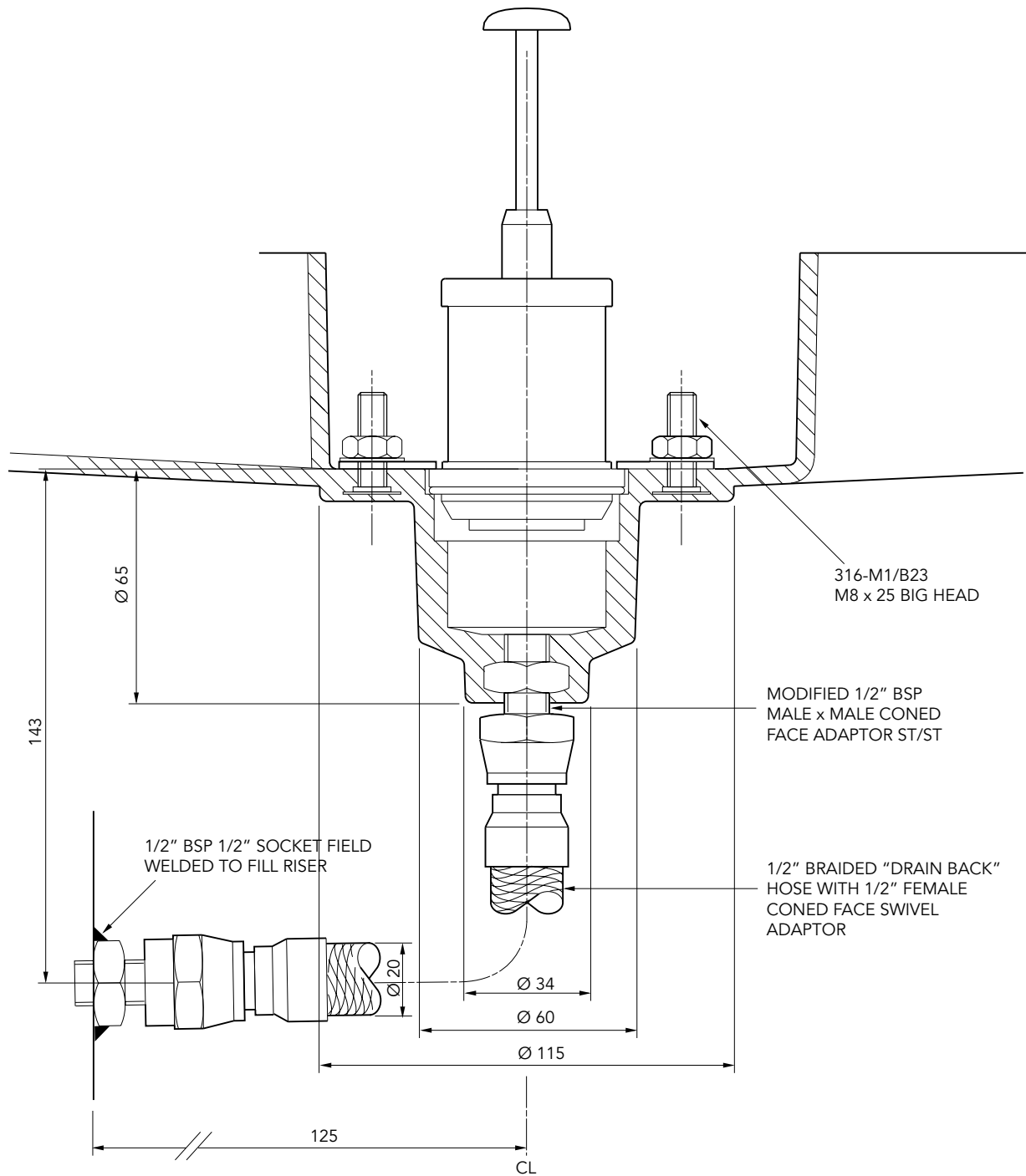


Secondary contained remote fill sump. 583mm dia. x 635mm deep solid base sump with a sealed secondary spill container with integrated drainback system. 450mm dia flat sealed cover and frame. Sealkits included.

For reference purposes only. This drawing is not a specification. Order against product code only. To enable continuous improvement of our products, the designs and specifications are subject to change without notice.

FIBRELITE 
PART OF OPW A DOVER COMPANY

Drainback Detail




Secondary contained remote fill sump. 583mm dia. x 635mm deep solid base sump with a sealed secondary spill container with integrated drainback system. 450mm dia flat sealed cover and frame. Sealkits included.

For reference purposes only. This drawing is not a specification. Order against product code only. To enable continuous improvement of our products, the designs and specifications are subject to change without notice.

FIBRELITE 
PART OF OPW A DOVER COMPANY

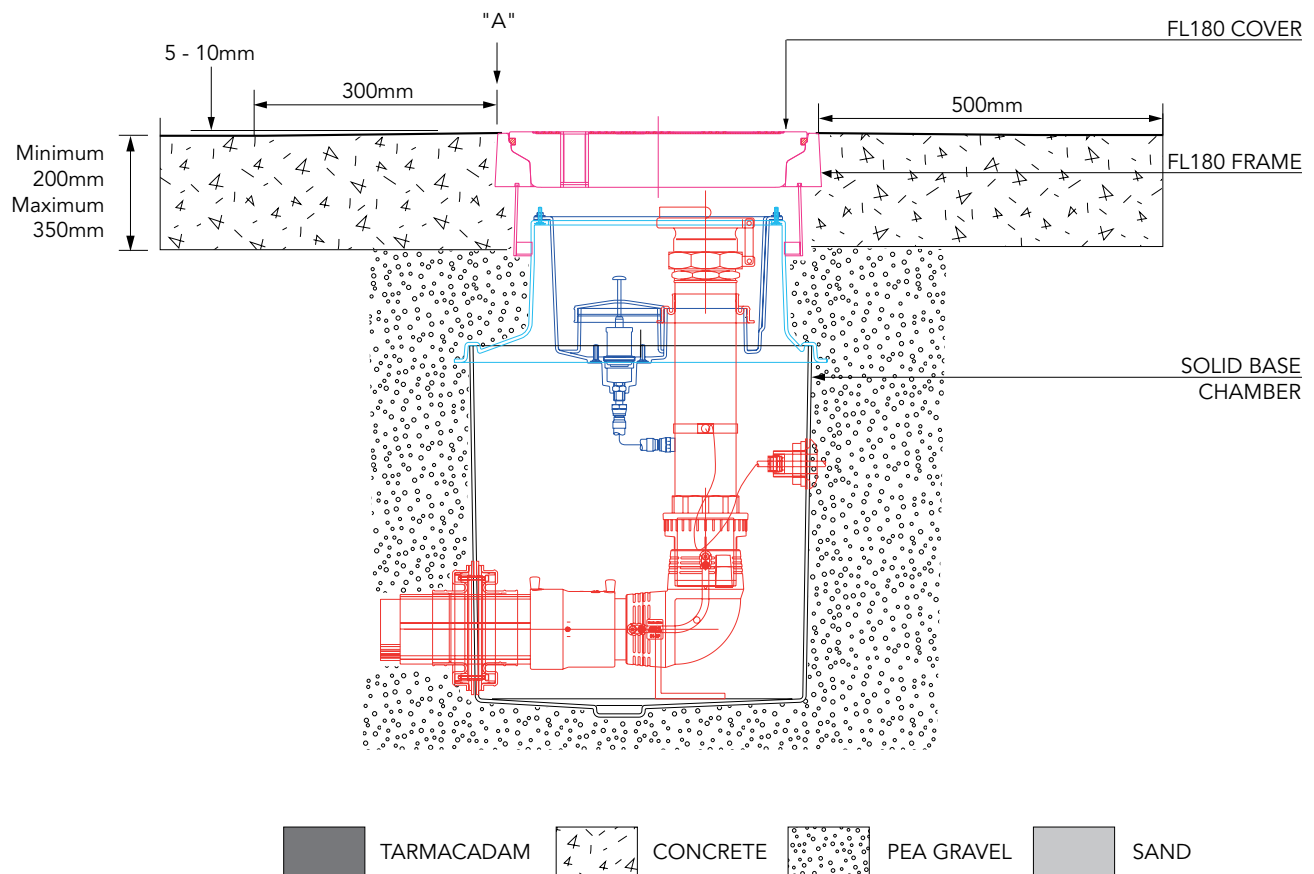


VERY IMPORTANT
OUTER EDGE "A" OF FRAME SET 5 - 10MM
ABOVE GENERAL FORECOURT AREA WITH
CONCRETE RAMPED AWAY OVER 300MM.



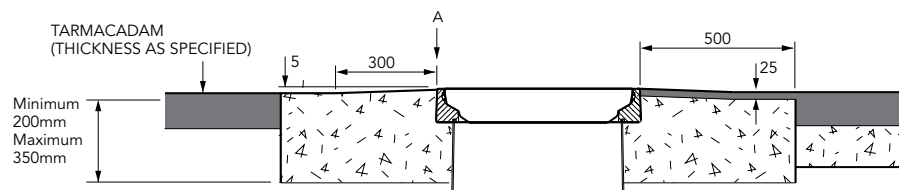
TYPICAL INSTALLATION

CONCRETE

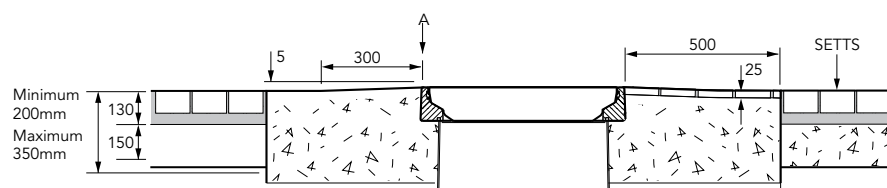


ALTERNATIVE INSTALLATION ADVICE

TARMACADAM



SETTS



Secondary contained remote fill sump. 583mm dia. x 635mm deep solid base sump with a sealed secondary spill container with integrated drainback system. 450mm dia flat sealed cover and frame. Sealkits included.

For reference purposes only. This drawing is not a specification. Order against product code only. To enable continuous improvement of our products, the designs and specifications are subject to change without notice.

FIBRELITE 
PART OF OPW A DOVER COMPANY