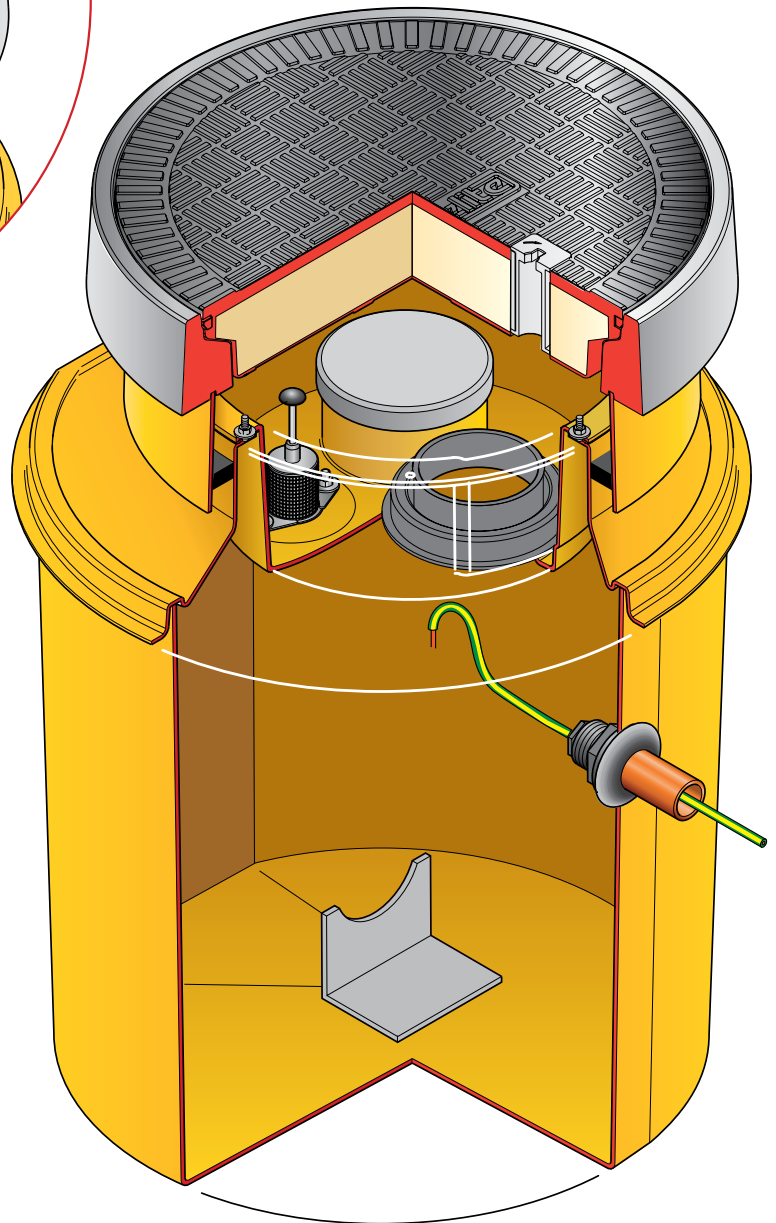
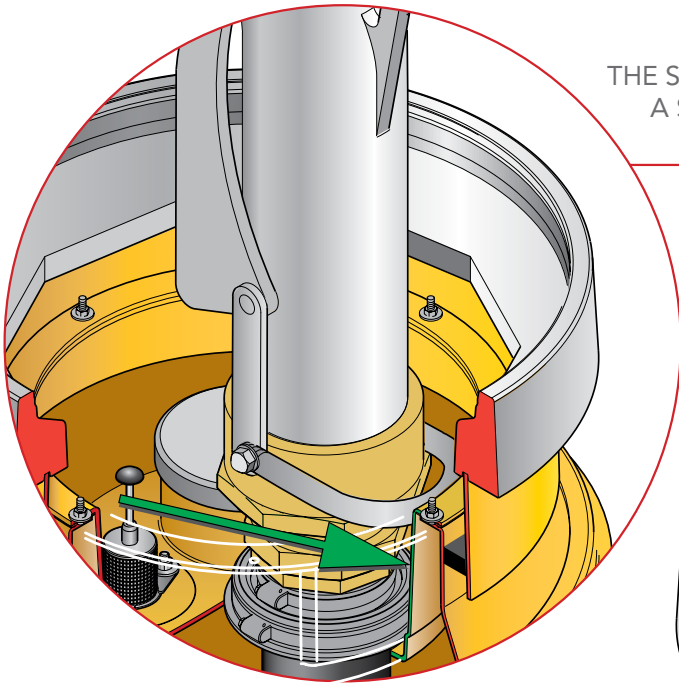


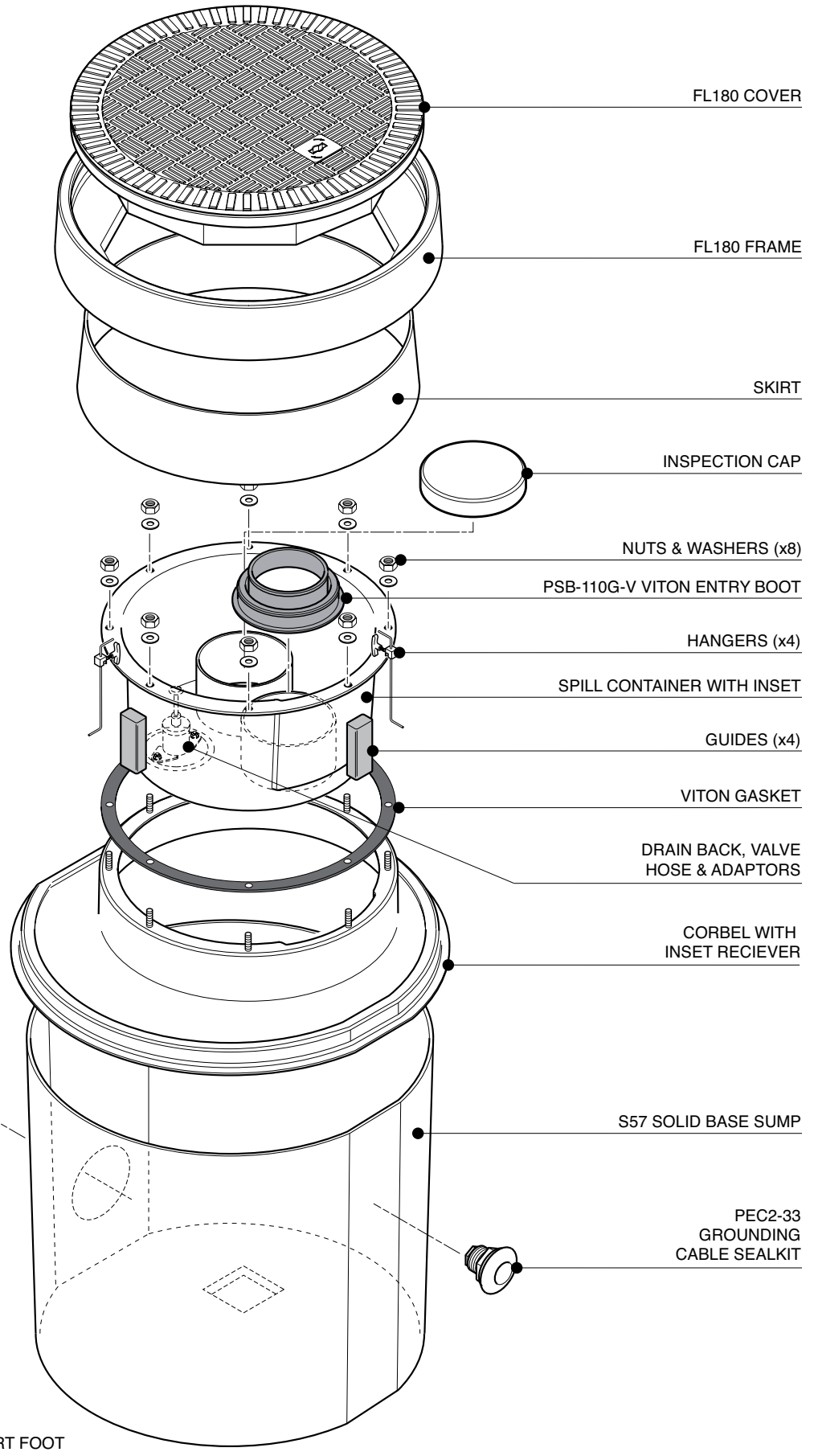
THE SPILL CONTAINER AND AND CORBEL CONTAIN  
A SPECIAL INSET SECTION TO ALLOW FOR EASY  
ACCESS OF GOOSENECK DELIVERY HOSES



Secondary contained remote fill sump. 583mm dia. x 635mm deep solid base sump and a sealed secondary spill container. 450mm dia flat sealed cover and frame. Includes PSB-110-PS 110mm dia. spill tray fill riser sealkit and grounding cable sealkit.

For reference purposes only. This drawing is not a specification. Order against product code only. To enable continuous improvement of our products, the designs and specifications are subject to change without notice.

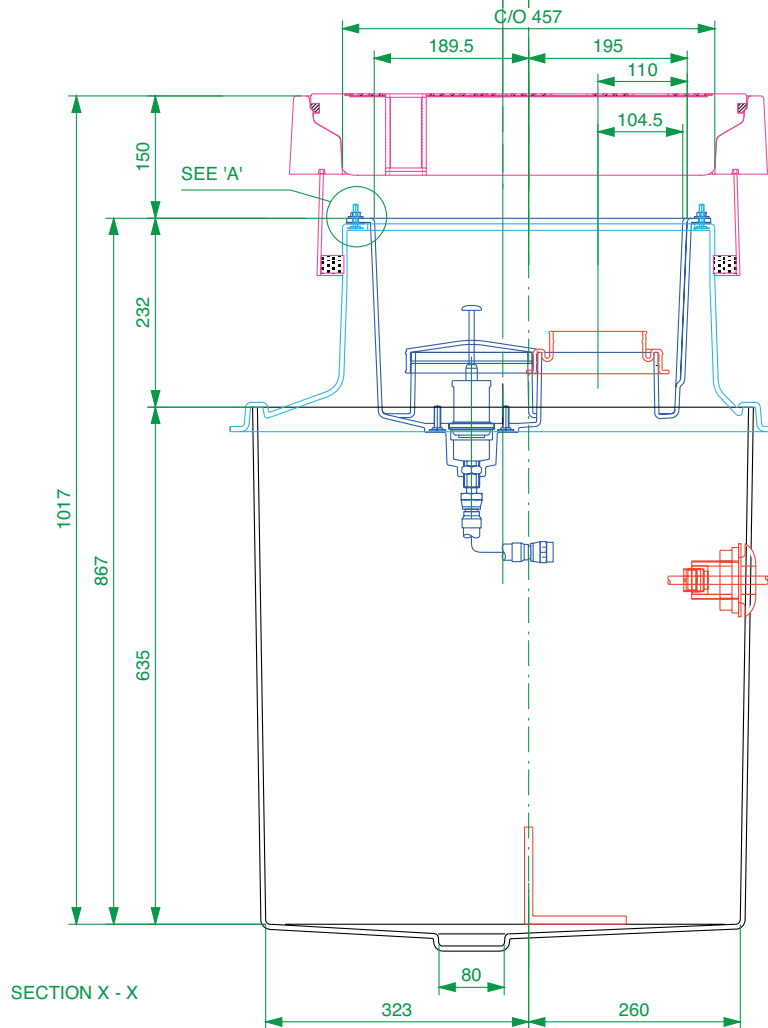
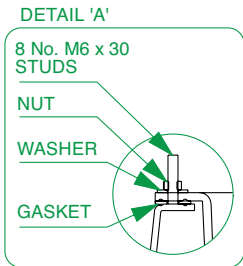
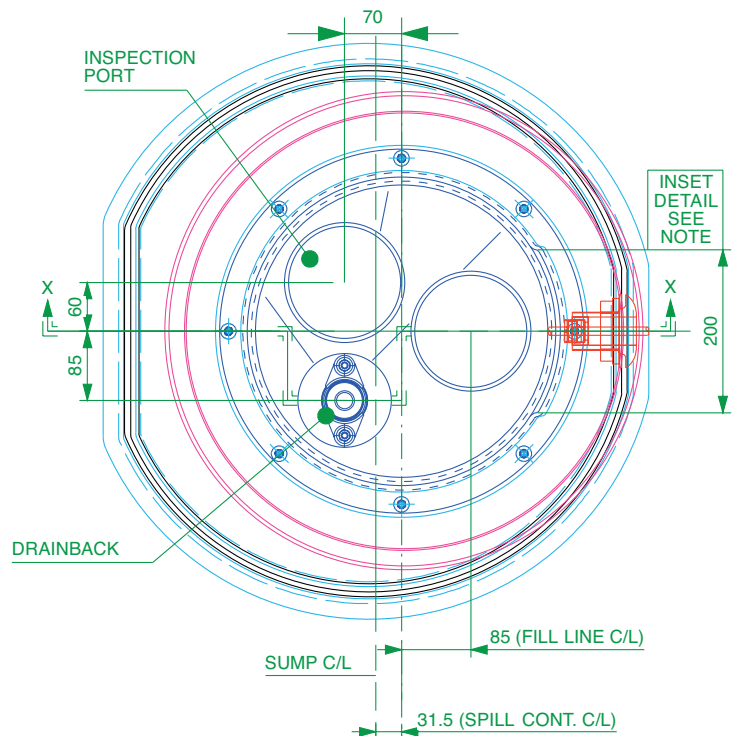
**FIBRELITE**   
PART OF OPW A DOVER COMPANY



Secondary contained remote fill sump. 583mm dia. x 635mm deep solid base sump and a sealed secondary spill container. 450mm dia flat sealed cover and frame. Includes PSB-110-PS 110mm dia. spill tray fill riser sealkit and grounding cable sealkit.

For reference purposes only. This drawing is not a specification. Order against product code only. To enable continuous improvement of our products, the designs and specifications are subject to change without notice.

**FIBRELITE**   
PART OF OPW A DOVER COMPANY



**NOTE:**

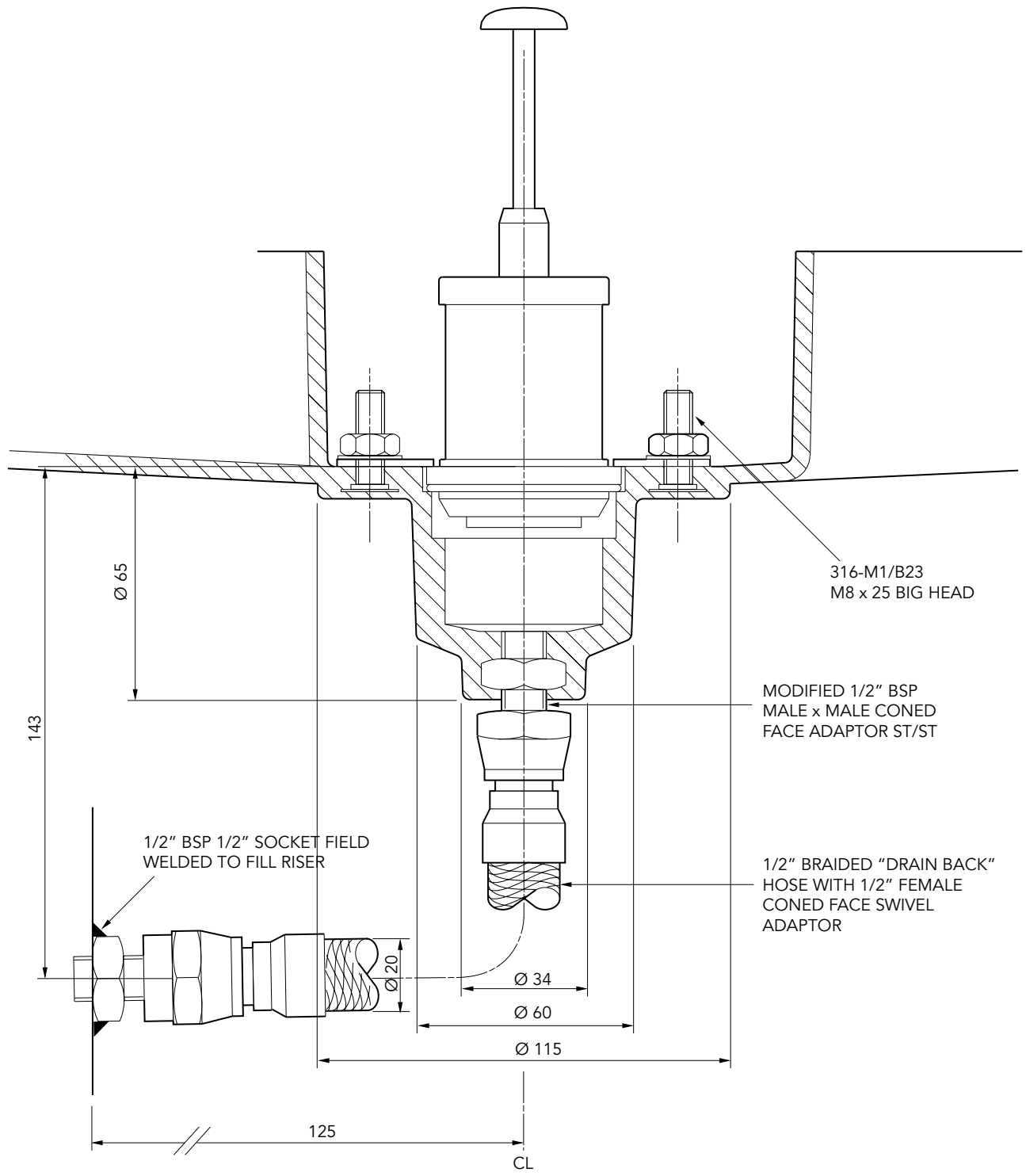
THE SPILL CONTAINER AND CORBEL CONTAIN A SPECIAL INSET SECTION TO ALLOW FOR EASY ACCESS OF GOOSENECK DELIVERY HOSES

**Spill Containment Capacity = 22 Litres**

Secondary contained remote fill sump. 583mm dia. x 635mm deep solid base sump and a sealed secondary spill container. 450mm dia flat sealed cover and frame. Includes PSB-110-PS 110mm dia. spill tray fill riser sealkit and grounding cable sealkit.

For reference purposes only. This drawing is not a specification. Order against product code only. To enable continuous improvement of our products, the designs and specifications are subject to change without notice.

**FIBRELITE**   
PART OF OPW A DOWDER COMPANY



316-M1/B23  
M8 x 25 BIG HEAD

MODIFIED 1/2" BSP  
MALE x MALE CONED  
FACE ADAPTOR ST/ST

1/2" BRAIDED "DRAIN BACK"  
HOSE WITH 1/2" FEMALE  
CONED FACE SWIVEL  
ADAPTOR

1/2" BSP 1/2" SOCKET FIELD  
WELDED TO FILL RISER

Secondary contained remote fill sump. 583mm dia. x 635mm deep solid base sump and a sealed secondary spill container. 450mm dia flat sealed cover and frame. Includes PSB-110-PS 110mm dia. spill tray fill riser sealkit and grounding cable sealkit.

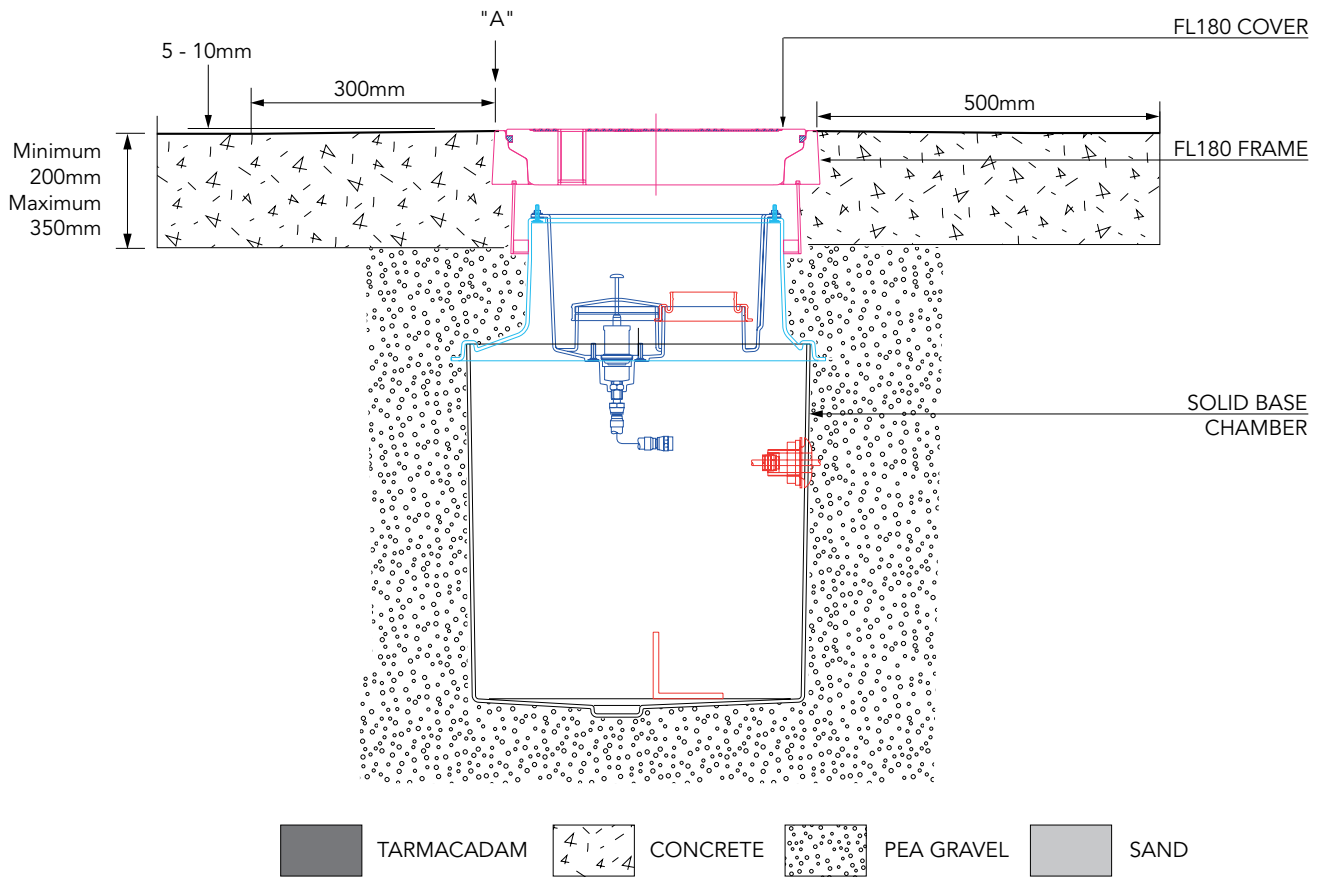
For reference purposes only. This drawing is not a specification. Order against product code only. To enable continuous improvement of our products, the designs and specifications are subject to change without notice.



**VERY IMPORTANT**  
 OUTER EDGE "A" OF FRAME SET 5 - 10MM  
 ABOVE GENERAL FORECOURT AREA WITH  
 CONCRETE RAMPED AWAY OVER 300MM.

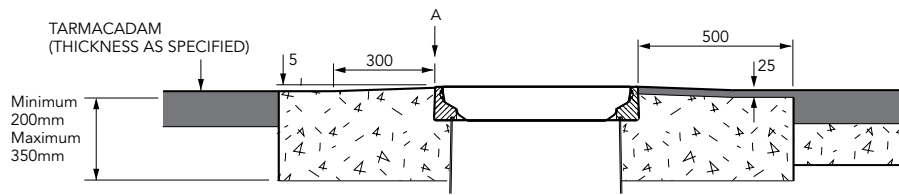
**TYPICAL INSTALLATION**

**CONCRETE**

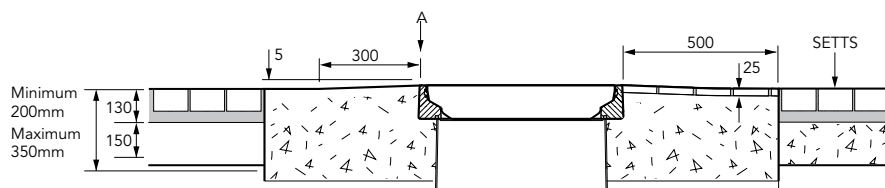


**ALTERNATIVE INSTALLATION ADVICE**

**TARMACADAM**



**SETTS**



Secondary contained remote fill sump. 583mm dia. x 635mm deep solid base sump and a sealed secondary spill container. 450mm dia flat sealed cover and frame. Includes PSB-110-PS 110mm dia. spill tray fill riser sealkit and grounding cable sealkit.

For reference purposes only. This drawing is not a specification. Order against product code only. To enable continuous improvement of our products, the designs and specifications are subject to change without notice.

