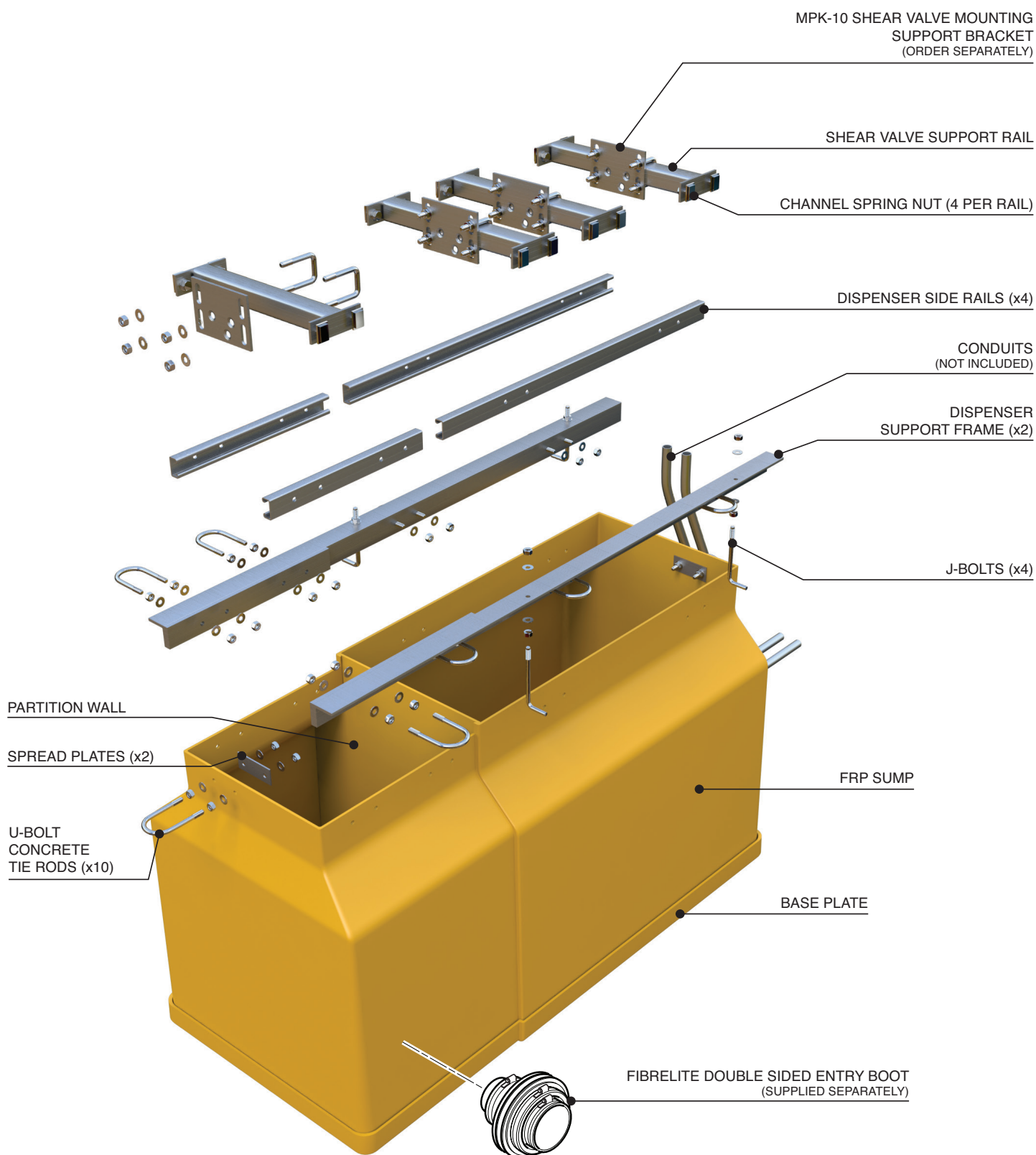


INSTALLATION INSTRUCTIONS

EL-G-E-DEF Encore Dispenser

FIBRELITE 
PART OF OPW A DOVER COMPANY



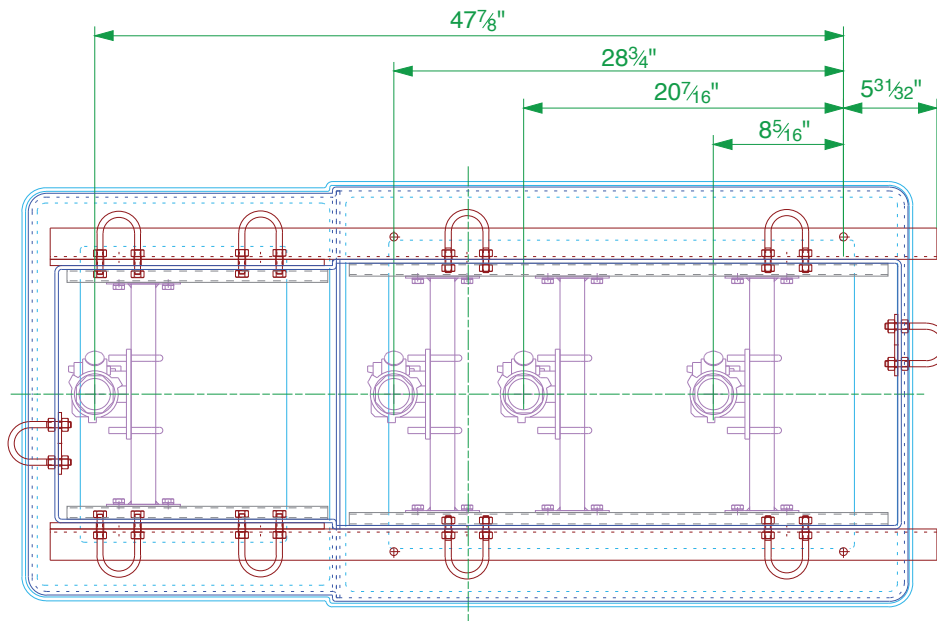
INSTALLATION INSTRUCTIONS

EL-G-E-DEF Encore Dispenser

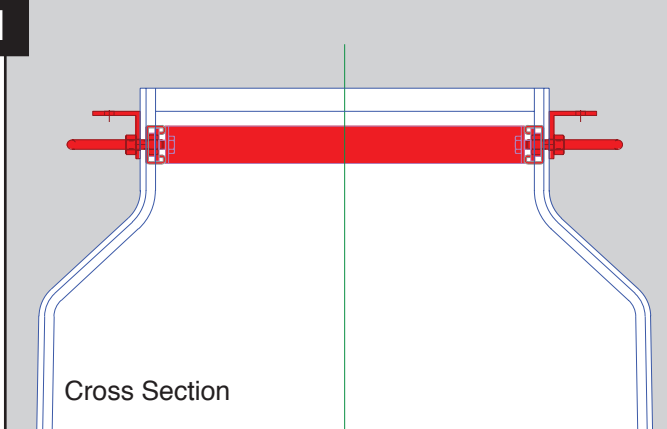
FIBRELITE

PART OF OPW A DOVER COMPANY

Shear Valve
Arrangement in
Plan



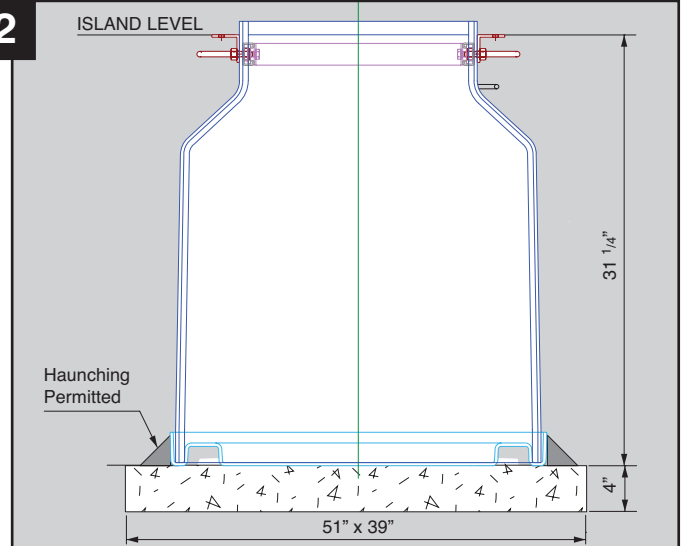
1



Cross Section

Dispenser sump will be supplied preassembled with metalwork.

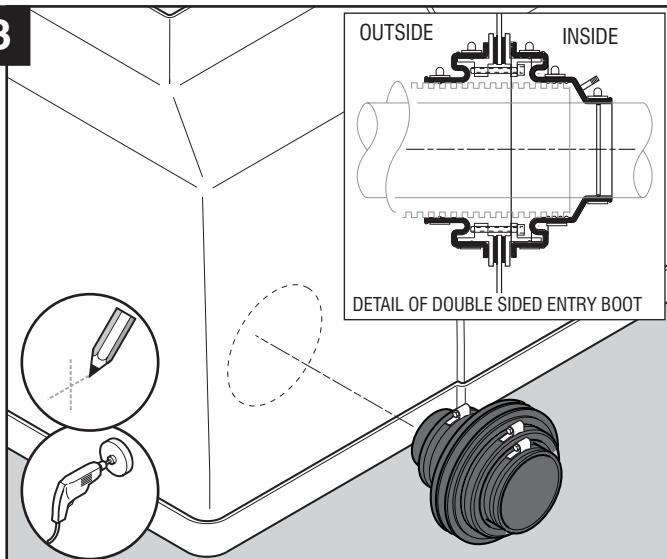
2



Dry fit the sump to ensure it sits level and prepare an adequate support base.

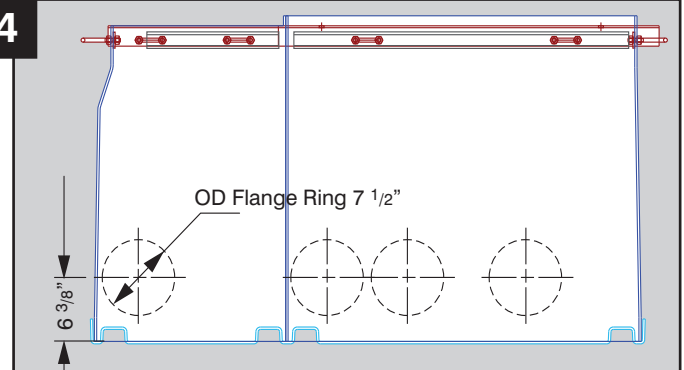
NB:- Sump should be embedded into the support base when installed.

3



If Fibrelite penetration fittings are to be used (PSB 50 to 110, PSBD 50 to 110 and PDBD pipe entry kit models a Ø 6" hole should be drilled). Mark up the hole positions.

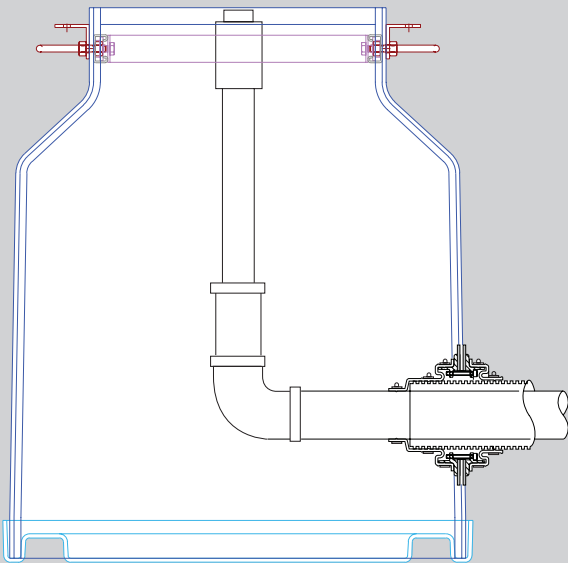
4



The minimum height of the exit pipe holes is 6 3/8" from the sump base to the holes centreline.

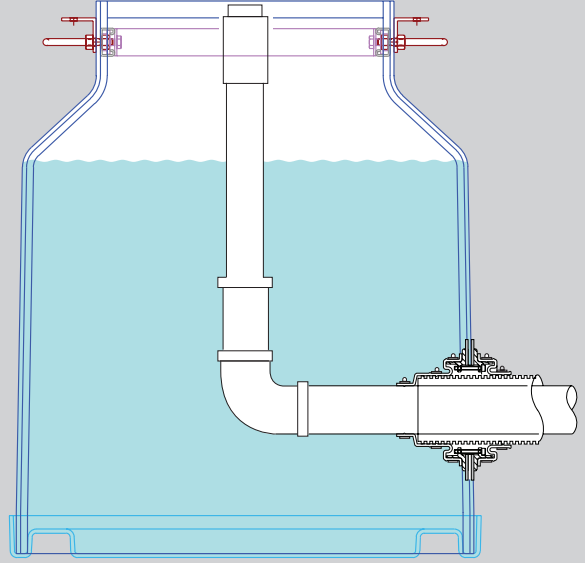
NB: Hole size drilled is Ø 6", OD of flange is Ø 7 1/2".

5



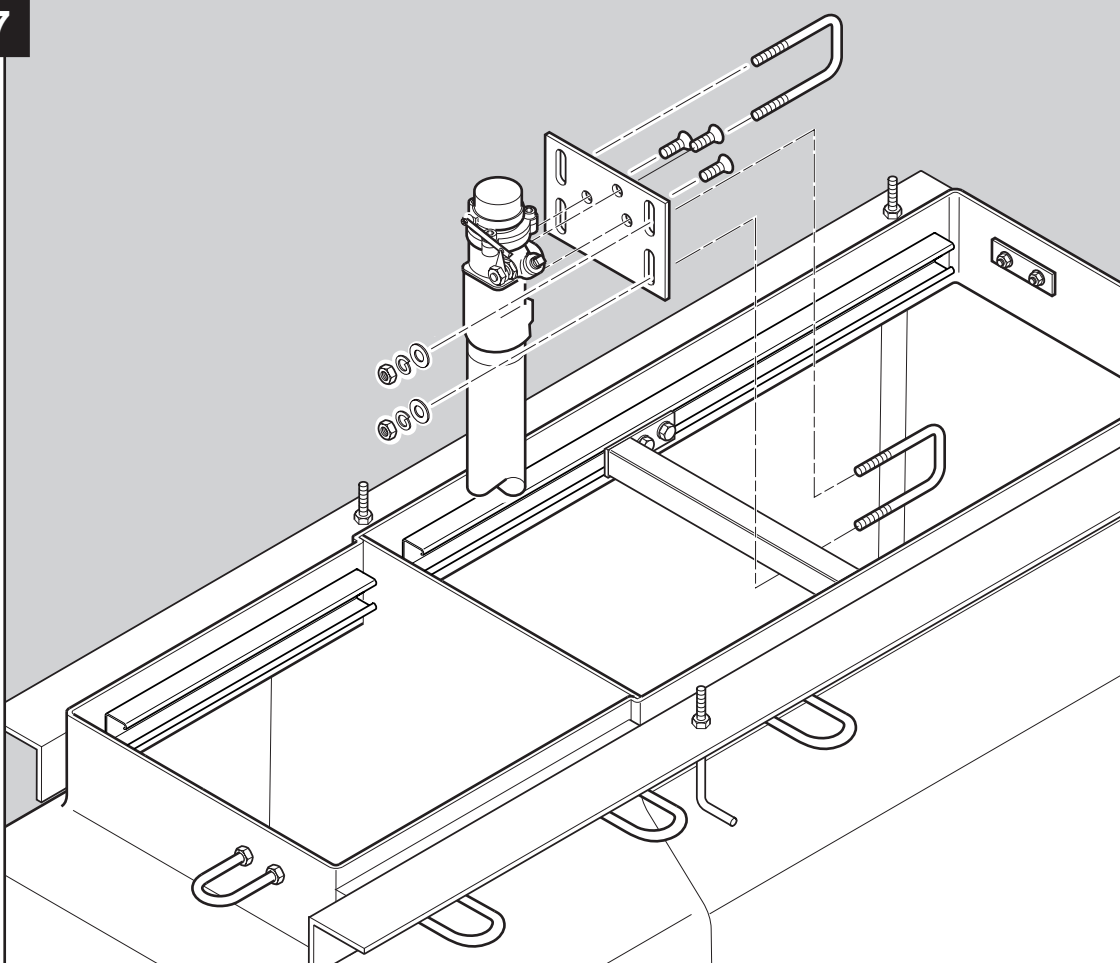
Run pipework through side wall, connect to upward riser.

6



Hydrostatic test is mandatory as per customer requirements.

7



Complete pipework and secure to shear valve rails with the MPK-10 mounting kit.

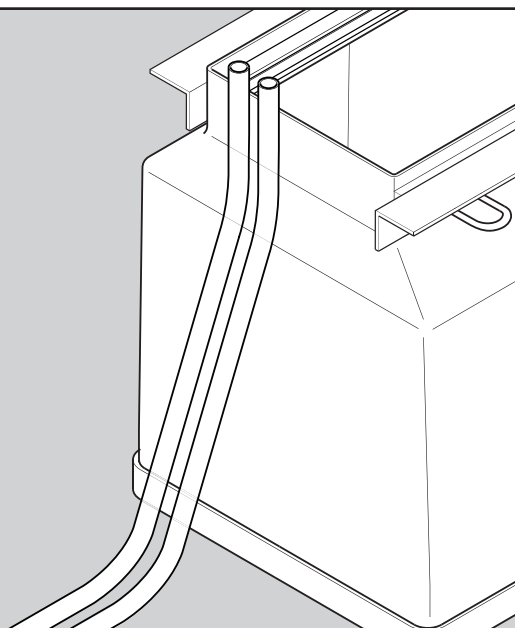
INSTALLATION INSTRUCTIONS

EL-G-E-DEF Encore Dispenser

FIBRELITE

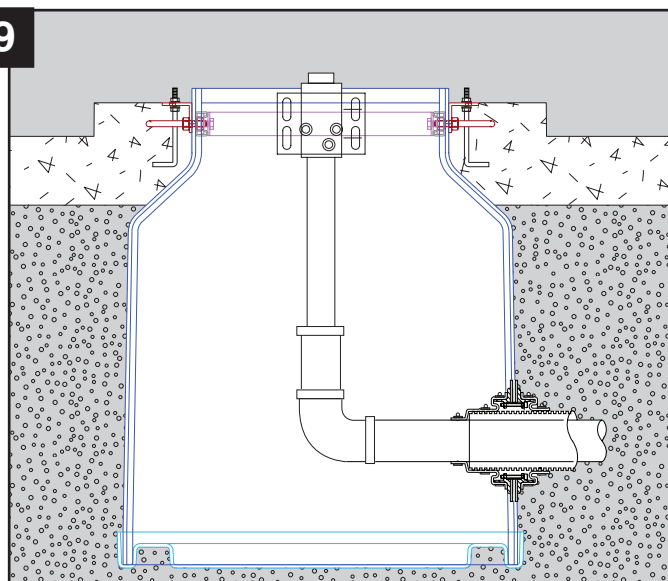
PART OF OPW A DOVER COMPANY

8



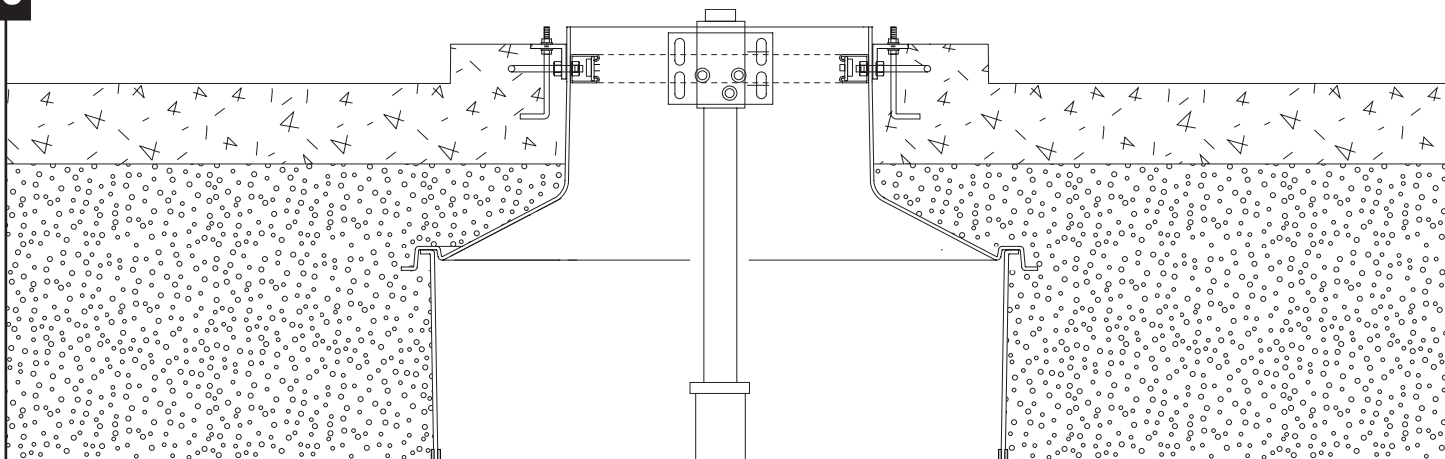
Run conduit at the end of the sump between the dispenser framework.

9



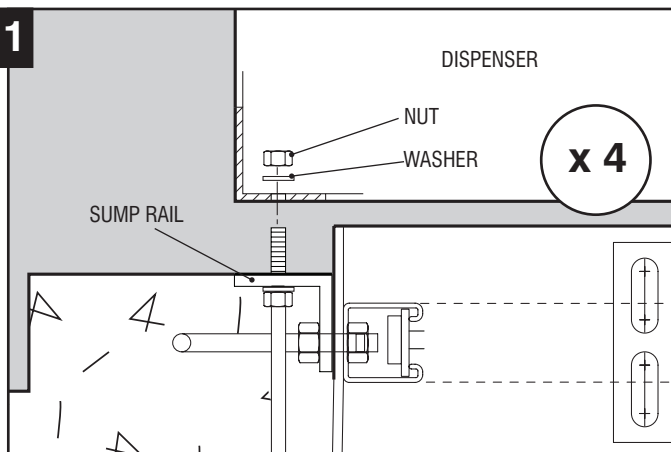
Backfill around the sump equally in levels to prevent uneven load against the sump wall.

10



Concrete island depth fixed as per architect drawing.
Allow concrete to cure

11



Remove upper nut & washer on the 4 anchor bolts
Install & connect the dispenser to the sump frame &
anchor bolt. Fit & tighten nut & washer.