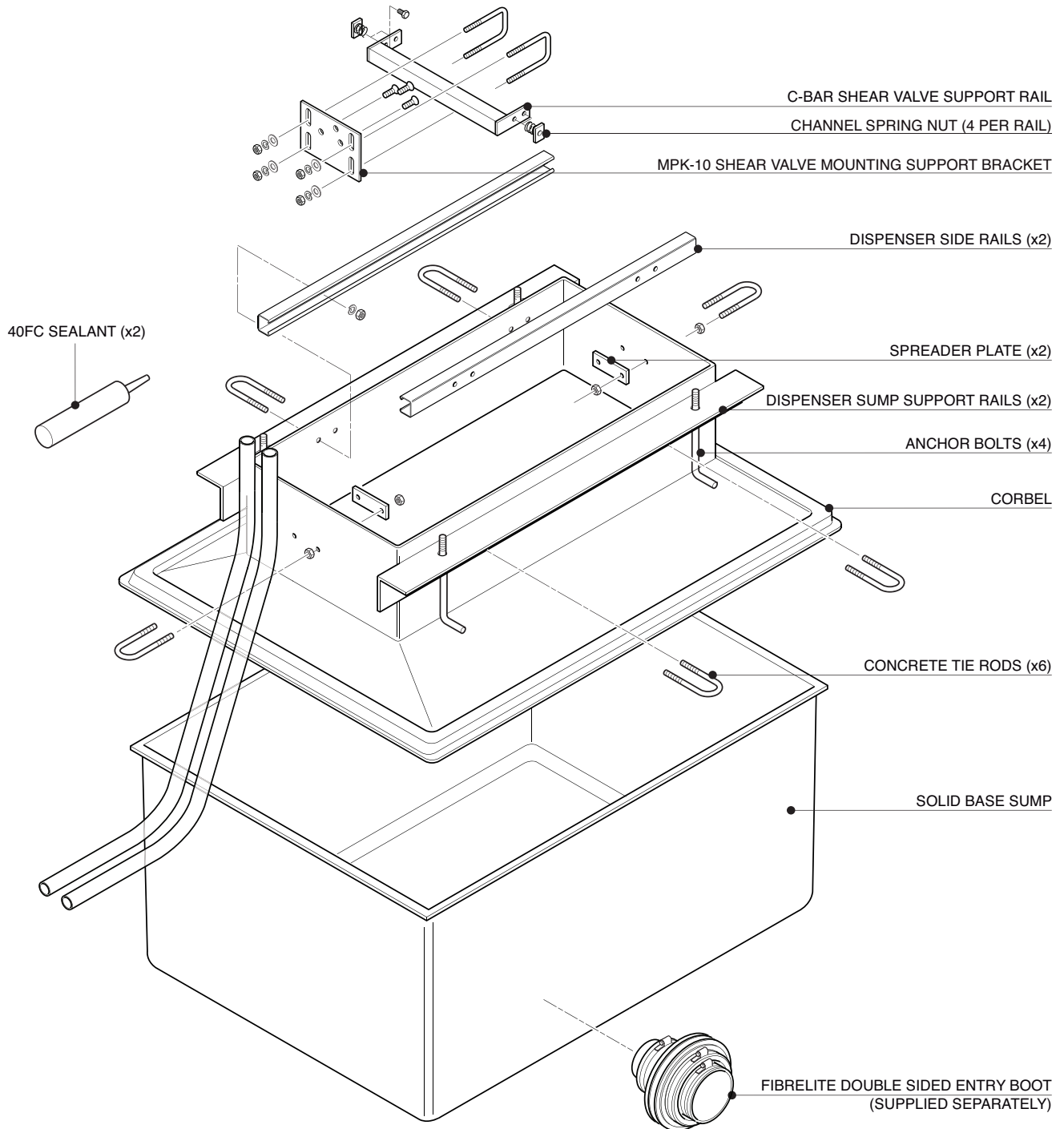


INSTALLATION INSTRUCTIONS

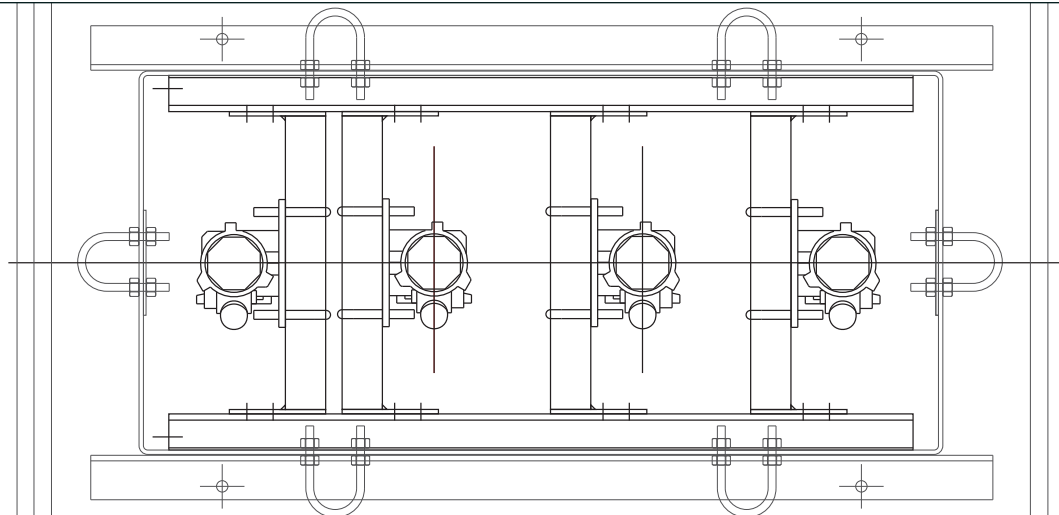
EL-G-E500 Encore Dispenser

FIBRELITE 

PART OF OPW A DOVER COMPANY



Shear Valve
Arrangement in
Plan



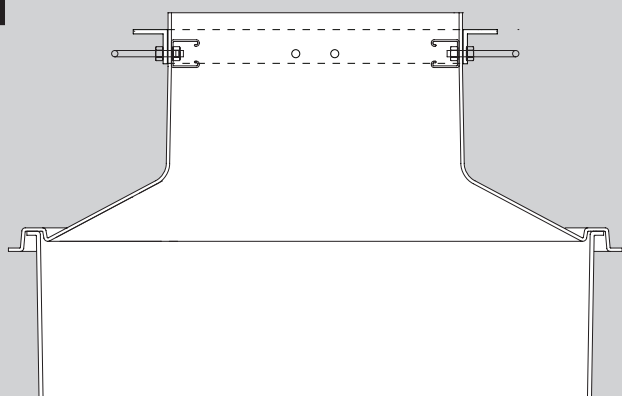
INSTALLATION INSTRUCTIONS

EL-G-E500 Encore Dispenser

FIBRELITE

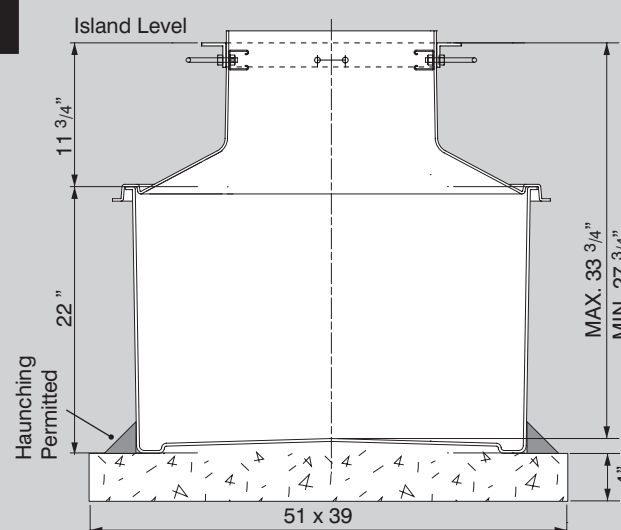
PART OF OPW A DOVER COMPANY

1



Dispenser top has been supplied preassembled with metalwork.

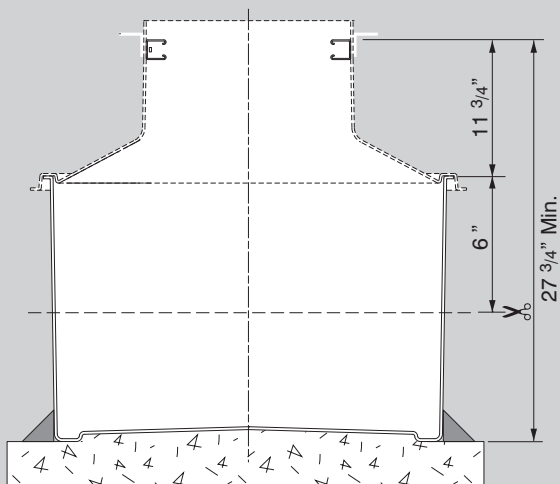
2



Dry fit the corbel on top of the sump to check level and prepare a adequate support base.

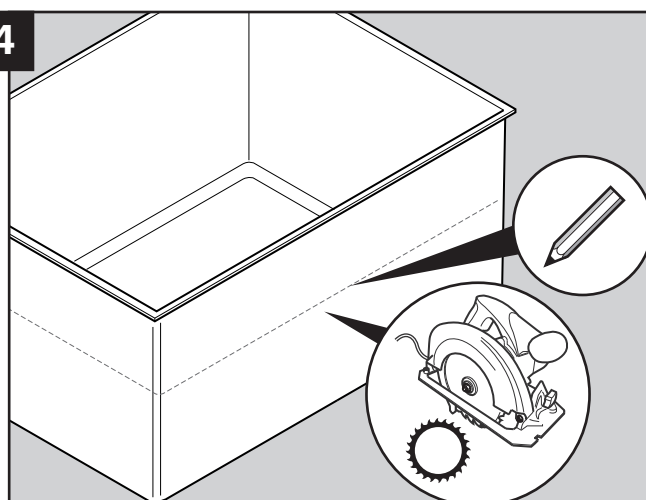
NB:- Sump should be embedded into the support base when installed.

3



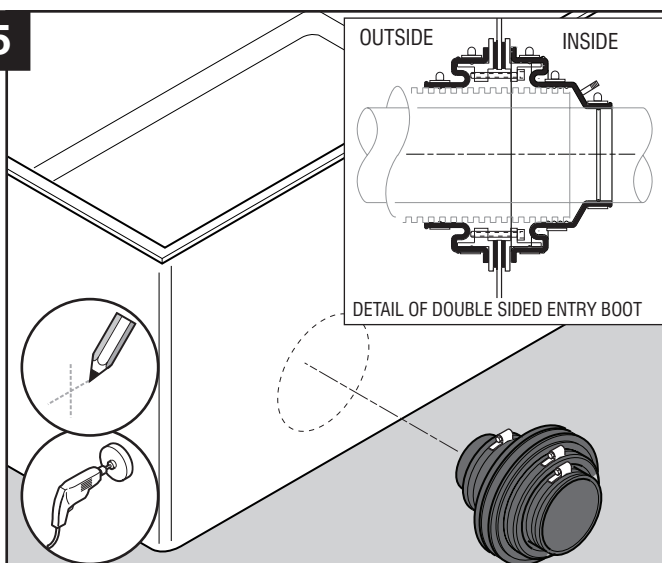
6" may be trimmed from the sump to reduce the overall height of the sump system from 33 3/4" to 27 3/4"

4



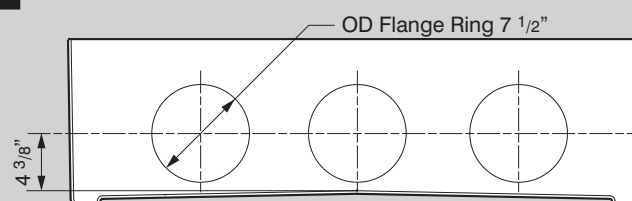
Mark trim point around the sump. Check position of pipe entry sealkits before trimming with a circular saw. Refer to 5 and 6 for pipework positions with and without trimming.

5



If Fibrelite penetration fittings are to be used (PSB 50 to 110, PSBD 50 to 110 and PDBD pipe entry kit models a Ø 6" hole should be drilled). Mark up hole positions as illustrated.

6



If sump is trimmed to minimum height centrepont of hole is 4 3/8" from base internally.

NB: Hole size drilled is Ø 6". OD of flange is Ø 7 1/2"

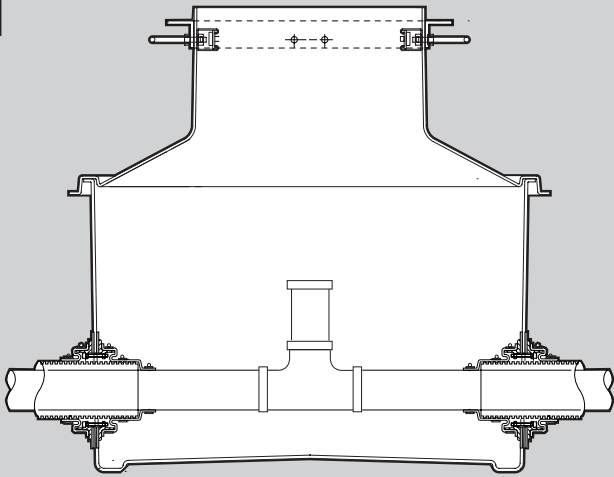
INSTALLATION INSTRUCTIONS

EL-G-E500 Encore Dispenser

FIBRELITE 

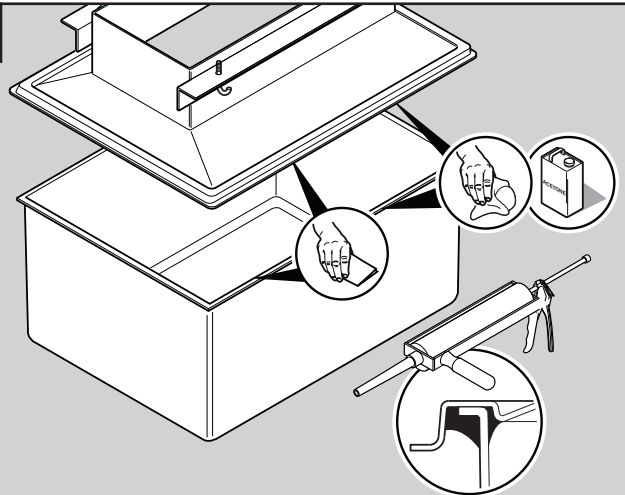
PART OF OPW A DOVER COMPANY

7



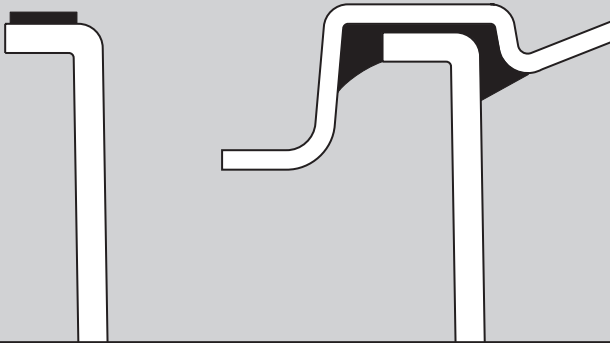
Run pipework through side wall, connect to upward riser. Cap off pipework to allow vacuum testing in Stage 8.

8



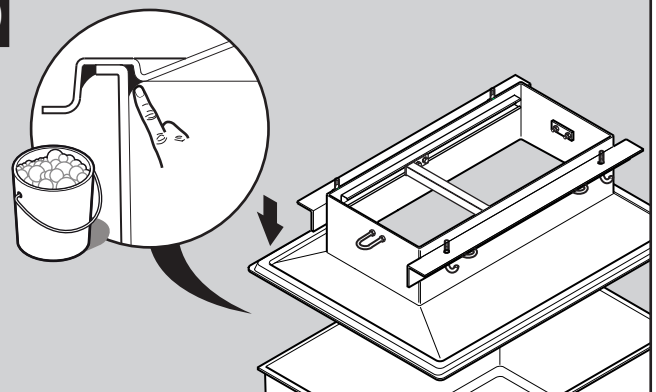
Abrade internal groove of corbel and top edge of the sump (inside & outside) with sandpaper. Degrease with acetone.

9



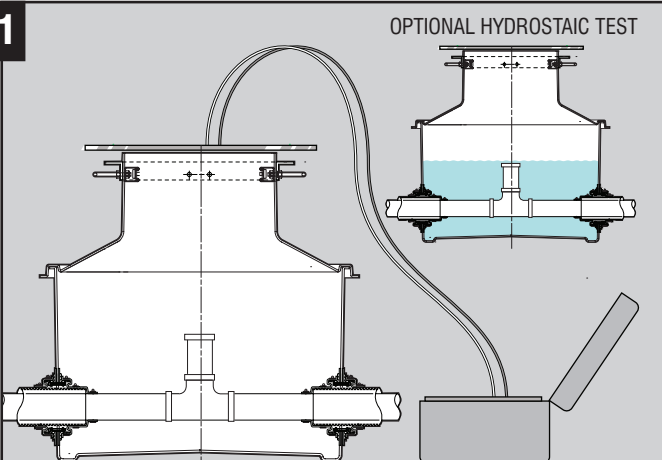
Apply a bead of sealant to the top of the sump flange. If this has been removed during trimming, apply sealant inside the groove of the corbel. Position the corbel onto the sump and push down firmly.

10



Apply sealant to BOTH the internal and external joint between the sump and corbel. Smooth off and press into the joint with soapy water to remove trapped air. Allow 12 hours for the sealant to set.

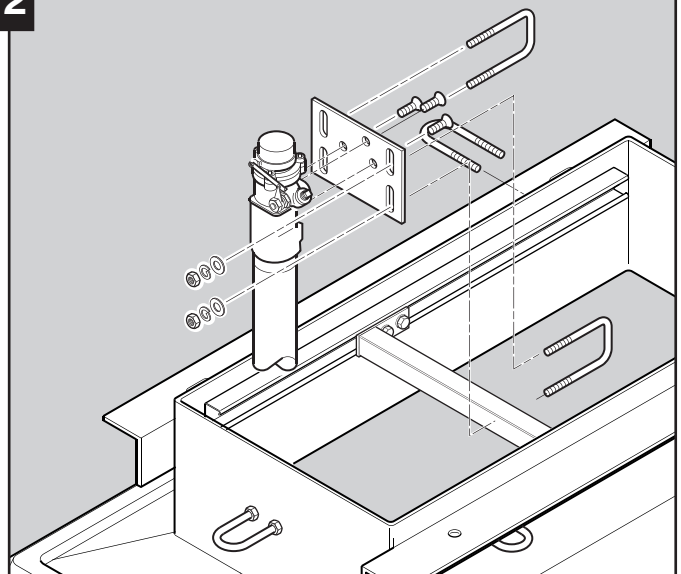
11



OPTIONAL HYDROSTAIC TEST

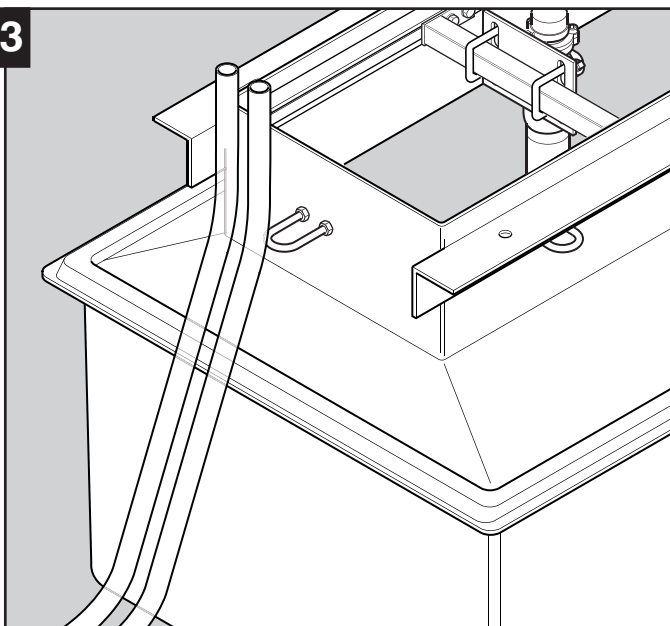
Optional vacuum water or hydrostatic test. Ensure pipework is capped off below the upward riser. Tighten clips on pipe entry sealkits against the pipe. Tighten nuts on upper support frame metalwork. Vacuum test at 24" depth setting only.

12



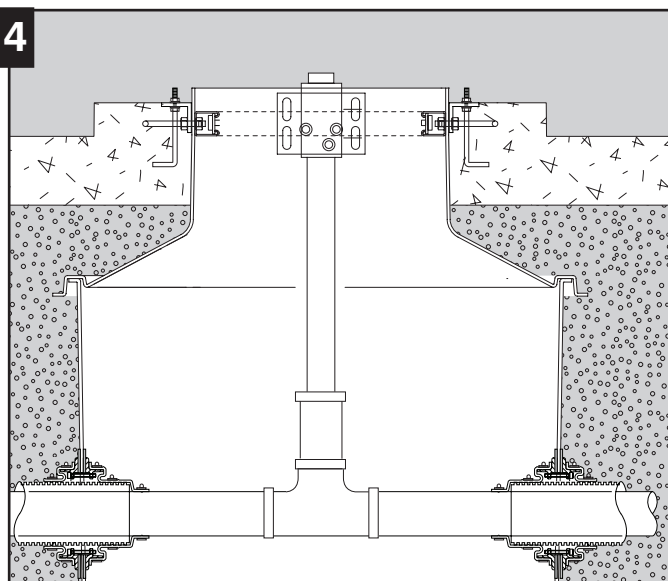
Complete pipework and secure to shear valve rails with the MPK-10 mounting kit.

13



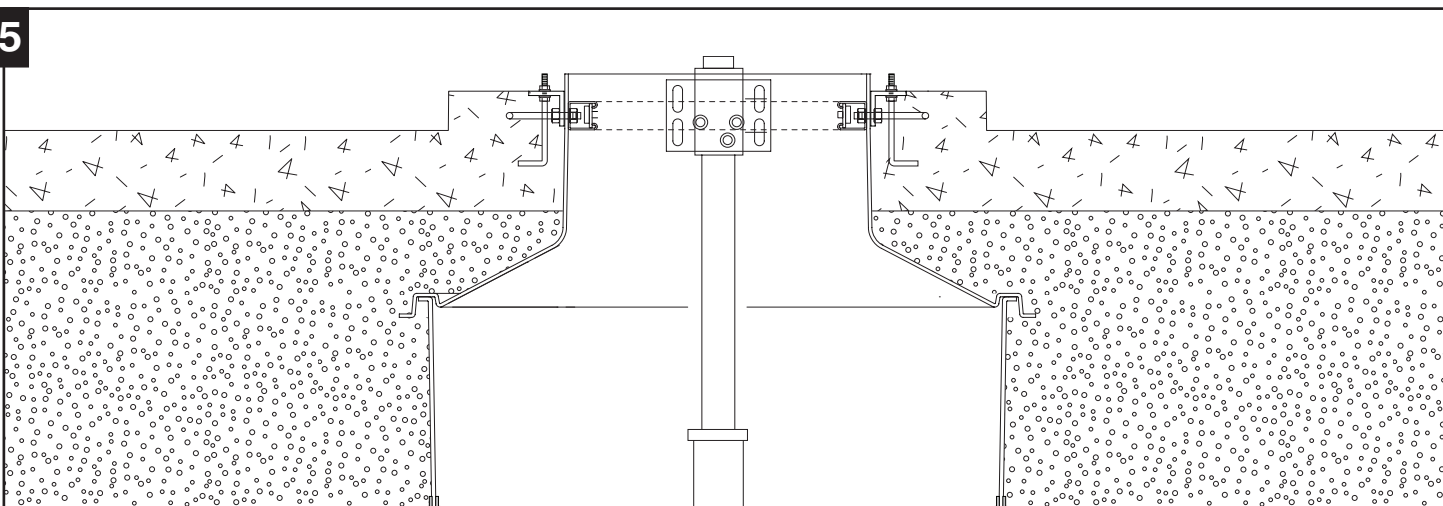
Run conduit at the end of the sump between the dispenser framework.

14



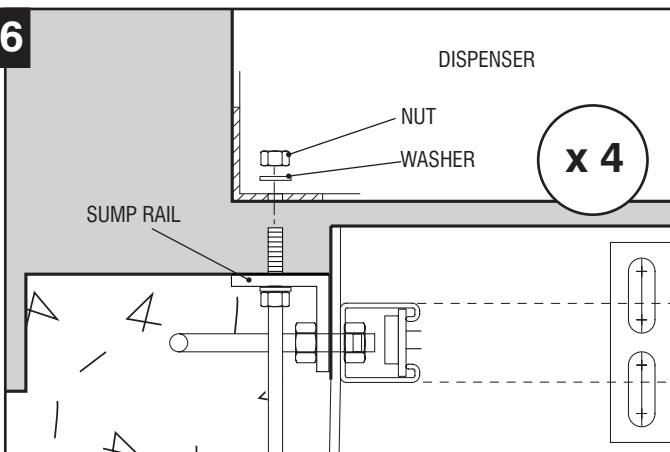
Backfill around the sump equally in levels to prevent uneven load against the sump wall.

15



Concrete island depth fixed as per architect drawing.
Allow concrete to cure

16



Remove upper nut & washer on the 4 anchor bolts
Install & connect the dispenser to the sump frame &
anchor bolt. Fit & tighten nut & washer.