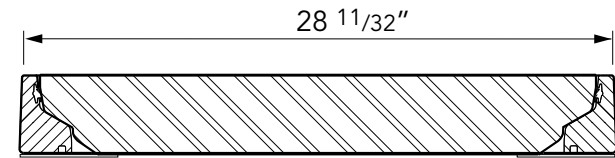
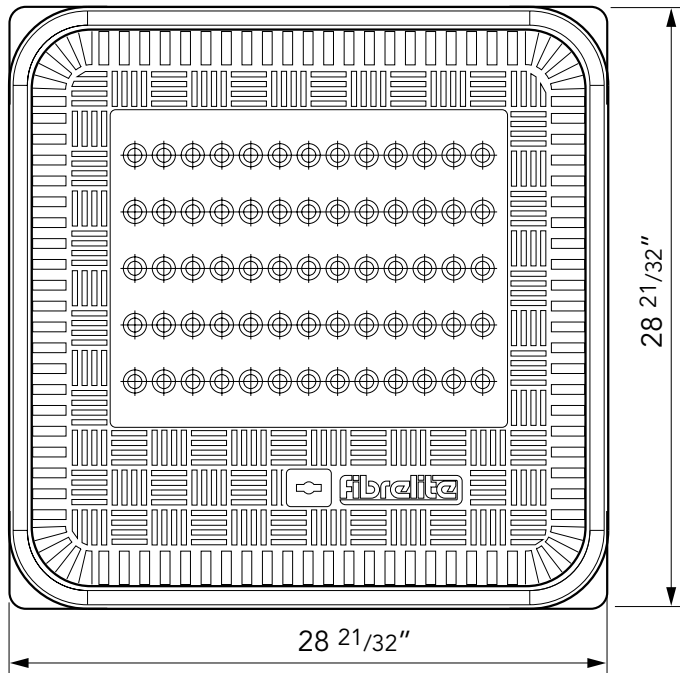
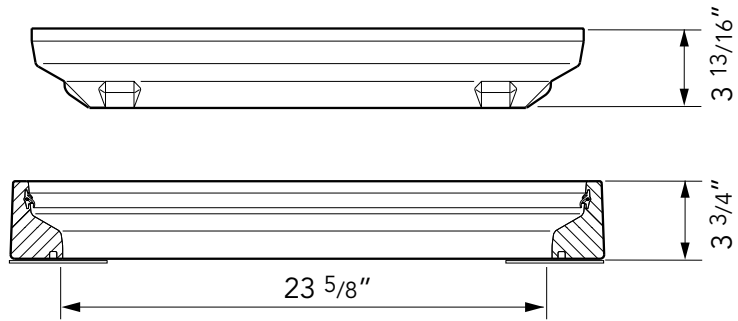


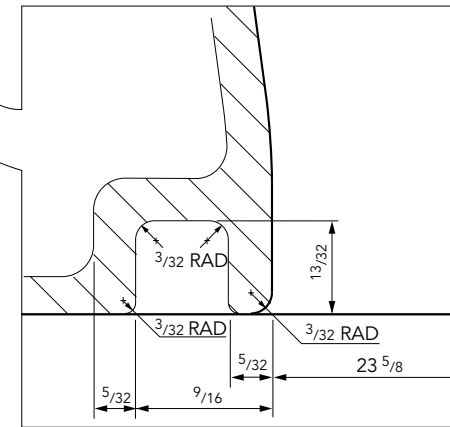
24" x 24" flat, vented composite cover with an aluminum frame. Temperature & chemical resistant. Designed for steam applications.

For reference purposes only. This drawing is not a specification. Order against product code only. To enable continuous improvement of our products, the designs and specifications are subject to change without notice.

**FIBRELITE**   
PART OF OPW A DOVER COMPANY



GROOVE DETAIL



24" x 24" flat, vented composite cover with an aluminum frame. Temperature & chemical resistant. Designed for steam applications.

For reference purposes only. This drawing is not a specification. Order against product code only. To enable continuous improvement of our products, the designs and specifications are subject to change without notice.



# CONCRETE

## VERY IMPORTANT

□□A□□□□□□□□ □□□□□□A□□□□□□□□□□  
 □□□□□□□□□□□□□□A□□□□□□□□□□□□□□  
 □□□□□□□□□□□□□□□□□□□□□□□□□□□□  
 □□□□□□□□□□□□□□□□□□□□□□□□□□□□

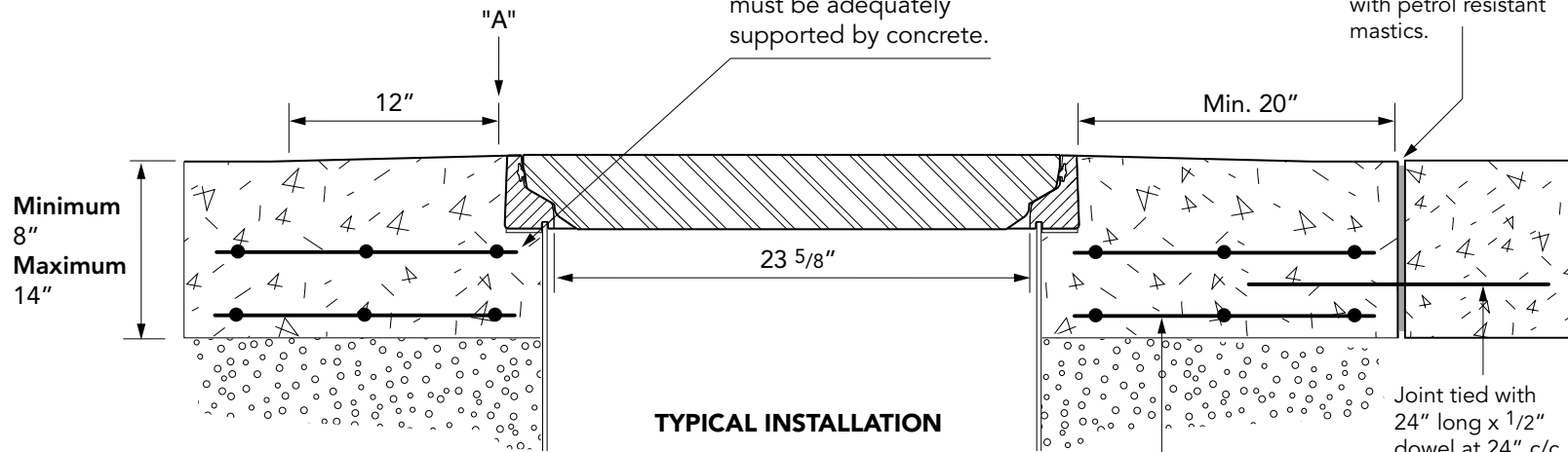
**VERY IMPORTANT**

! To allow for drainage, Fibrelite recommends that the concrete be sloped away from the top outer edge of the frame (A) a minimum of 1/2" over a 12" distance. Do not expose the top outer edge of the frame (A) – the concrete pad must be flush with the top outer edge of the frame. !

## VERY IMPORTANT

The underside of the frame must be adequately supported by concrete.

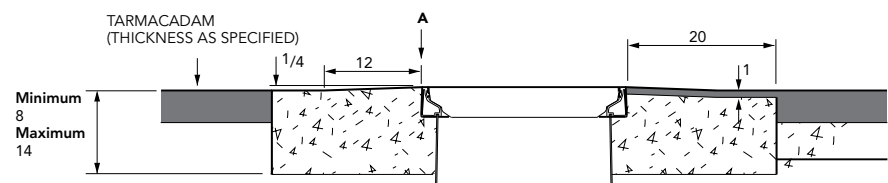
Expansion joint filled with petrol resistant mastics.



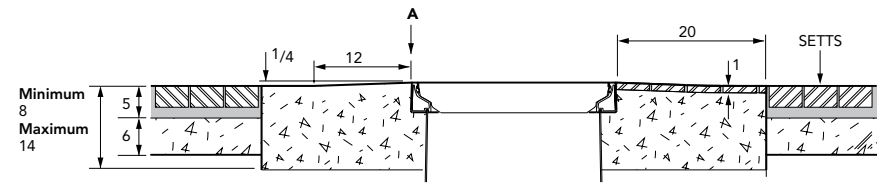
**TYPICAL INSTALLATION**

TARMACADAM   
  PEA GRAVEL   
  CONCRETE   
  SAND

## TARMACADAM



## SETTS



24" x 24" flat, vented composite cover with an aluminum frame. Temperature & chemical resistant. Designed for steam applications.

For reference purposes only. This drawing is not a specification. Order against product code only. To enable continuous improvement of our products, the designs and specifications are subject to change without notice.

