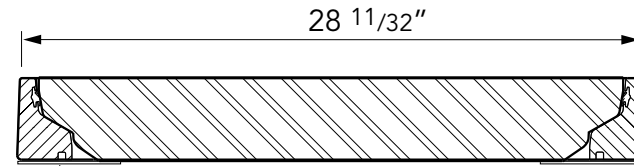
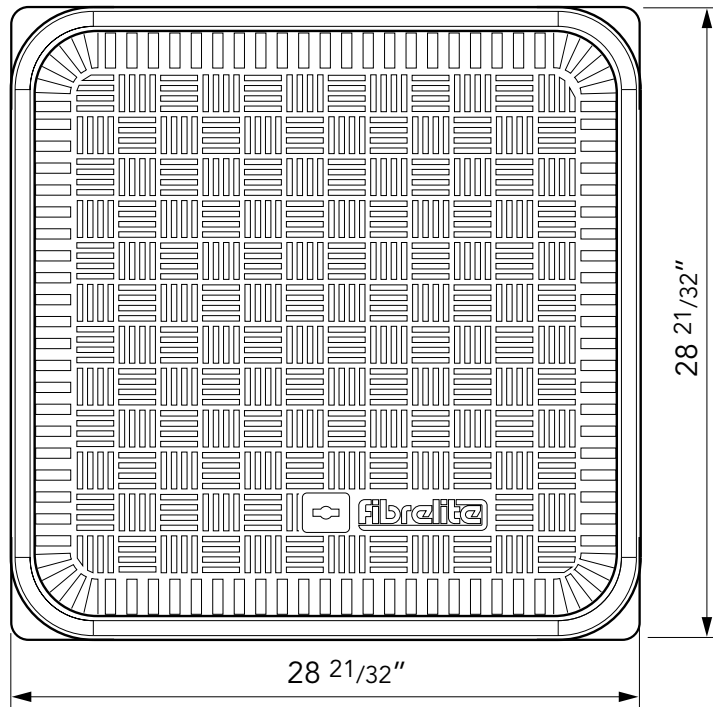
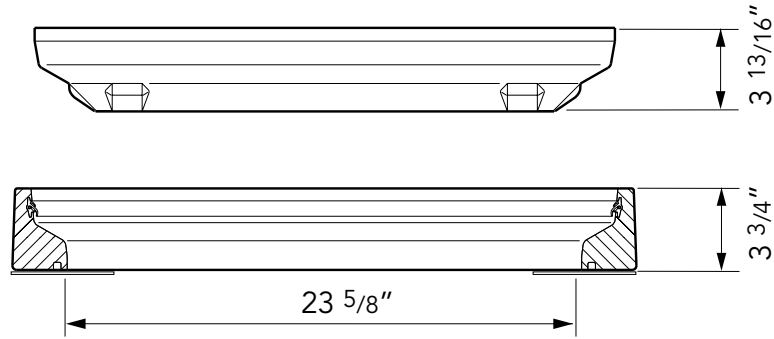




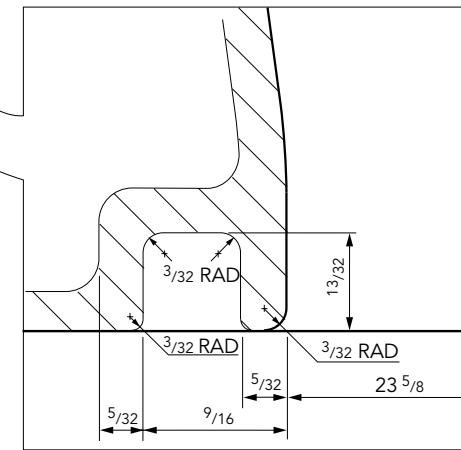
24" x 24" flat sealed composite cover with an aluminum frame. Temperature & chemical resistant. Designed for steam applications.

For reference purposes only. This drawing is not a specification. Order against product code only. To enable continuous improvement of our products, the designs and specifications are subject to change without notice.

FIBRELITE 
PART OF OPW A DOVER COMPANY



GROOVE DETAIL



Load Rating	Cover Weight	Frame Weight
SD	44 lbs	24.2 lbs

24" x 24" flat sealed composite cover with an aluminum frame. Temperature & chemical resistant. Designed for steam applications.

For reference purposes only. This drawing is not a specification. Order against product code only. To enable continuous improvement of our products, the designs and specifications are subject to change without notice.



CONCRETE

VERY IMPORTANT

□□A□□□□□□□□ □□□□□□A□□□□□□□□□□
 □□□□□□□□□□□□□□A□□□□□□□□□□□□□□
 □□□□□□□□□□□□□□□□□□□□□□□□□□□□
 □□□□□□□□□□□□□□□□□□□□□□□□□□□□

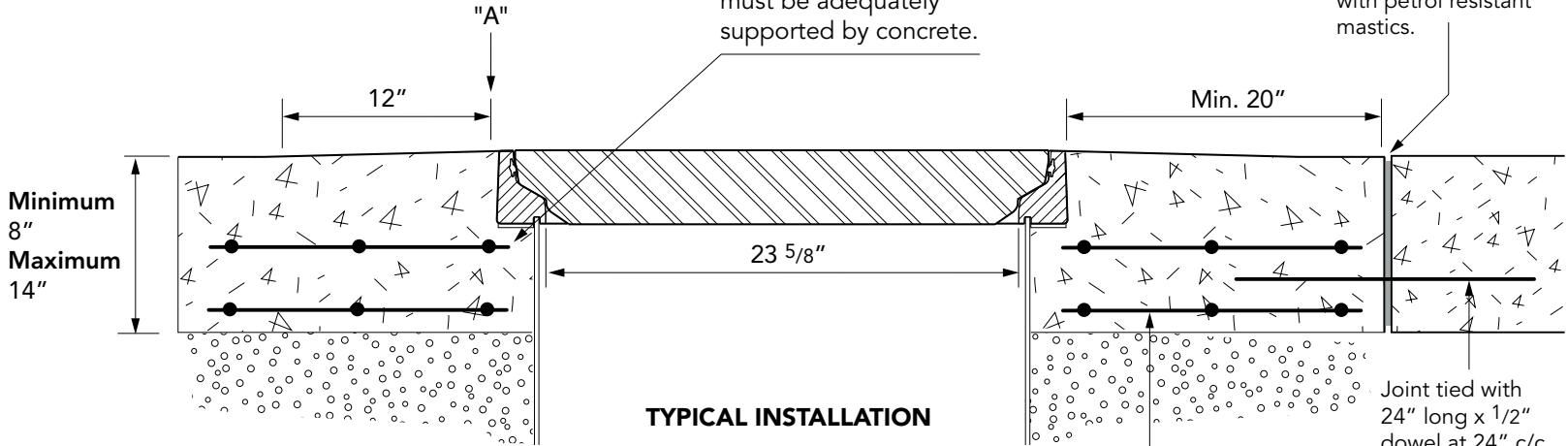
VERY IMPORTANT

! To allow for drainage, Fibrelite recommends that the concrete be sloped away from the top outer edge of the frame (A) a minimum of 1/2" over a 12" distance. Do not expose the top outer edge of the frame (A) – the concrete pad must be flush with the top outer edge of the frame. !

VERY IMPORTANT

The underside of the frame must be adequately supported by concrete.

Expansion joint filled with petrol resistant mastics.



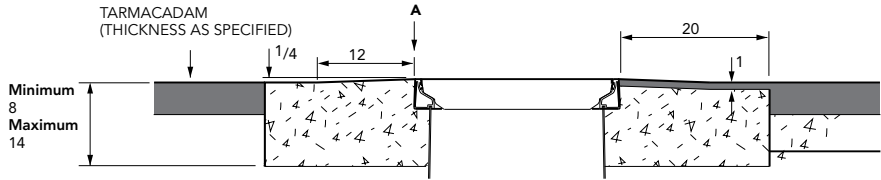
TYPICAL INSTALLATION

TARMACADAM
 PEA GRAVEL
 CONCRETE
 SAND

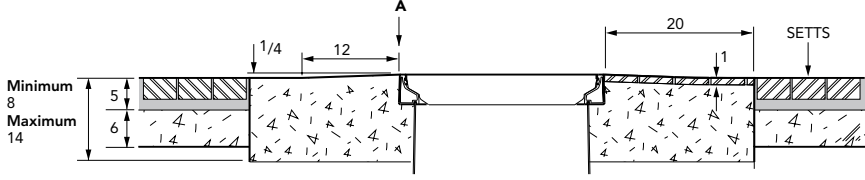
Concrete reinforced with 2 layers of reinforcement mesh.

Joint tied with 24" long x 1/2" dowel at 24" c/c. Half bonded.

TARMACADAM



SETTS



24" x 24" flat sealed composite cover with an aluminum frame. Temperature & chemical resistant. Designed for steam applications.

For reference purposes only. This drawing is not a specification. Order against product code only. To enable continuous improvement of our products, the designs and specifications are subject to change without notice.

