

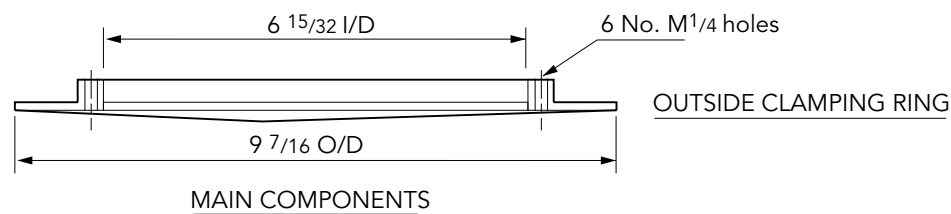
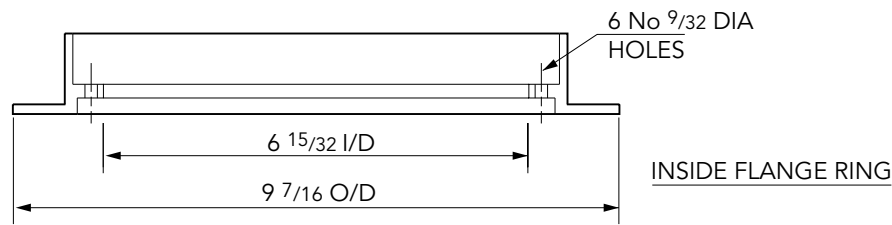
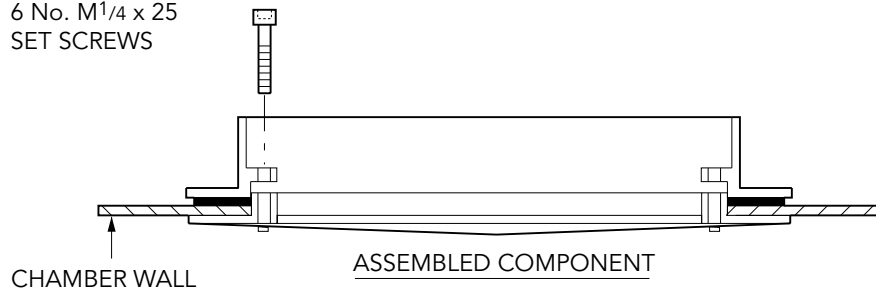
CLAMPING RANGE O/D OF PIPE		
PRODUCT CODE	MIN.	MAX.
PSB/140	4 31/32	5 1/2

Large clearance entry pipe kits to fit 5 1/2 " pipe.

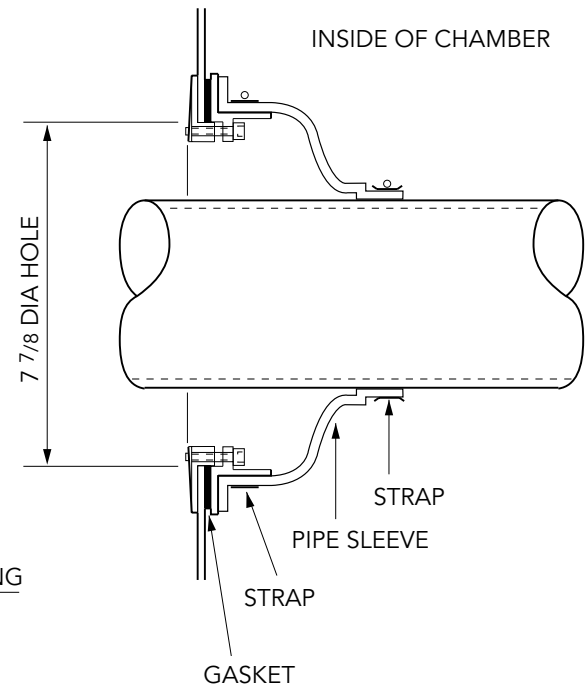
For reference purposes only. This drawing is not a specification. Order against product code only. To enable continuous improvement of our products, the designs and specifications are subject to change without notice.



6 No. M1/4 x 25
SET SCREWS



ASSEMBLY OF PIPEWORK
SIZE 5 1/2" O/D



Large clearance entry pipe kits to fit 5 1/2 " pipe.

For reference purposes only. This drawing is not a specification. Order against product code only. To enable continuous improvement of our products, the designs and specifications are subject to change without notice.

