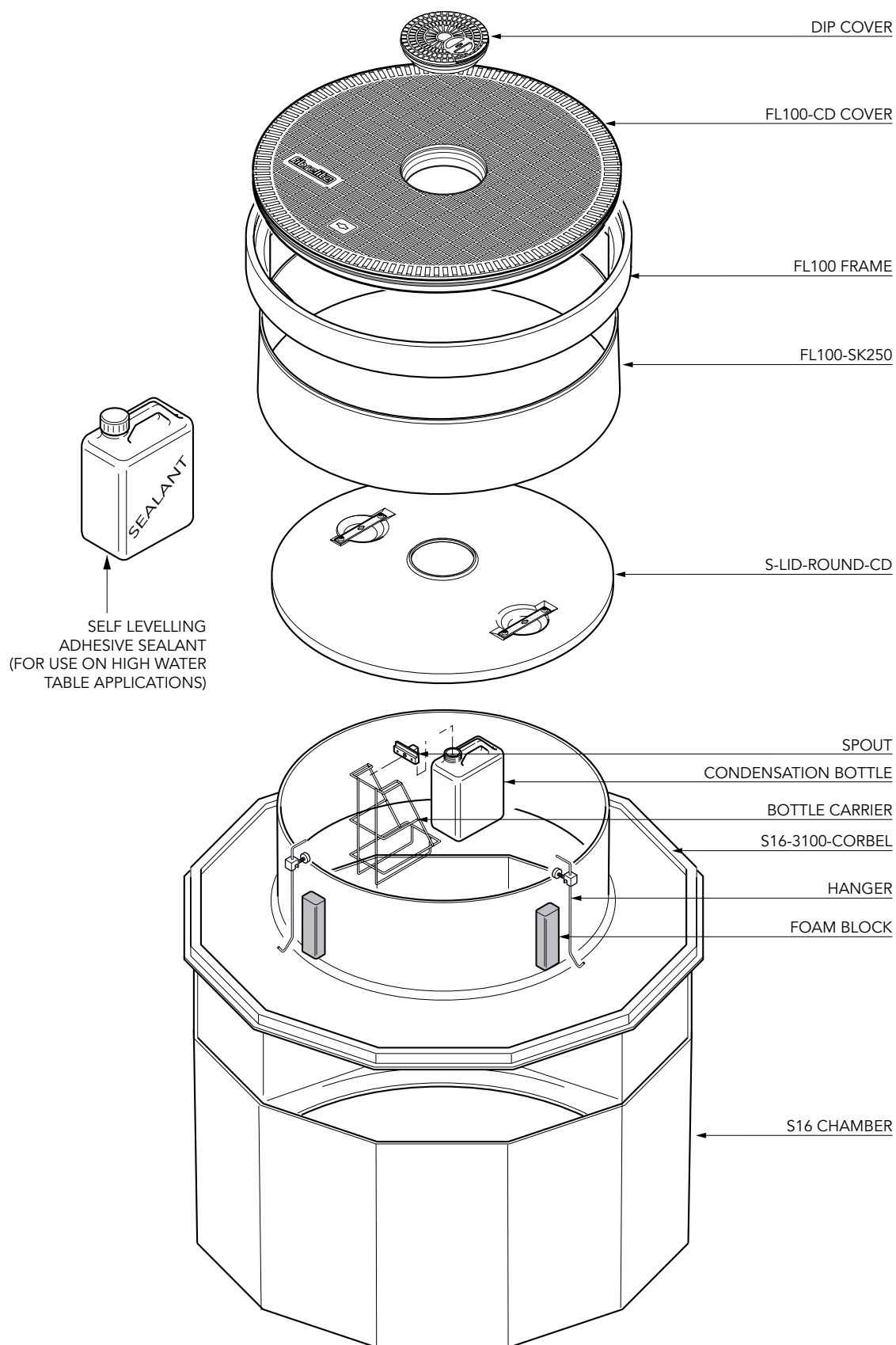


59" diameter 12 sided sump with reverse flange, corbel, adjustable height skirt, internal lid with dip tube hole, round 40" flat sealed cover and frame with central dip cover.

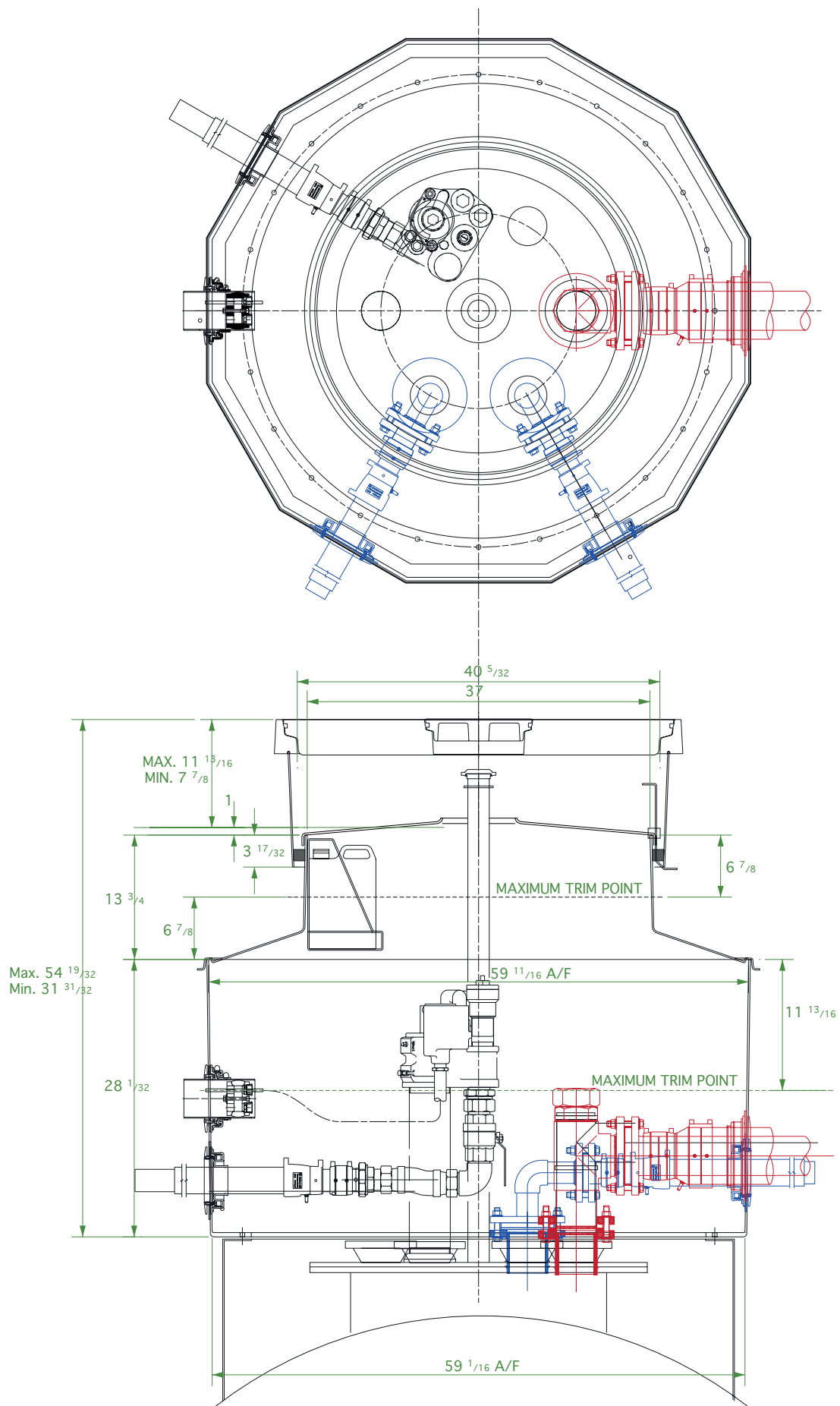
For reference purposes only. This drawing is not a specification. Order against product code only. To enable continuous improvement of our products, the designs and specifications are subject to change without notice.



59" diameter 12 sided sump with reverse flange, corbel, adjustable height skirt, internal lid with dip tube hole, round 40" flat sealed cover and frame with central dip cover.

For reference purposes only. This drawing is not a specification. Order against product code only. To enable continuous improvement of our products, the designs and specifications are subject to change without notice.

FIBRELITE 
PART OF OPW A DOVER COMPANY



59" diameter 12 sided sump with reverse flange, corbel, adjustable height skirt, internal lid with dip tube hole, round 40" flat sealed cover and frame with central dip cover.

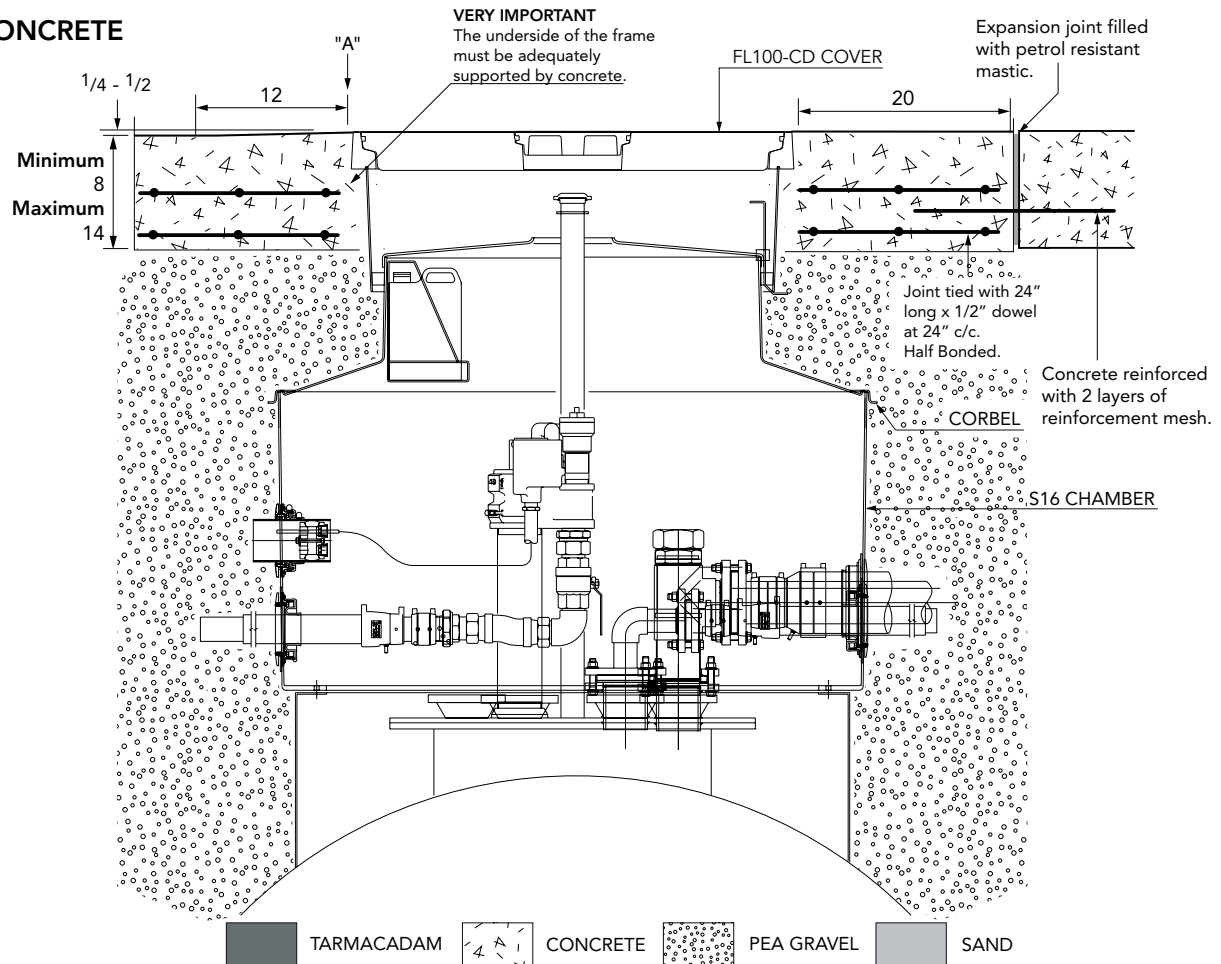
For reference purposes only. This drawing is not a specification. Order against product code only. To enable continuous improvement of our products, the designs and specifications are subject to change without notice.

FIBRELITE 
PART OF OPW A DOVER COMPANY

VERY IMPORTANT
 OUTER EDGE "A" OF FRAME SET $\frac{1}{4}$ - $\frac{1}{2}$ "
 ABOVE GENERAL GRADE AREA WITH
 CONCRETE RAMPED AWAY OVER 12".

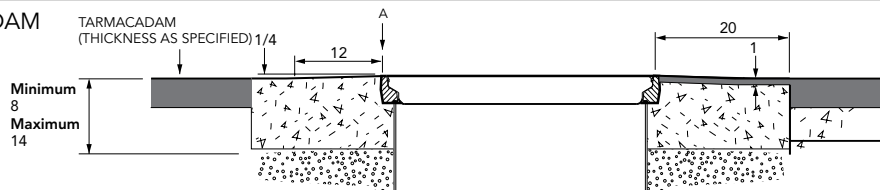
TYPICAL INSTALLATION

CONCRETE

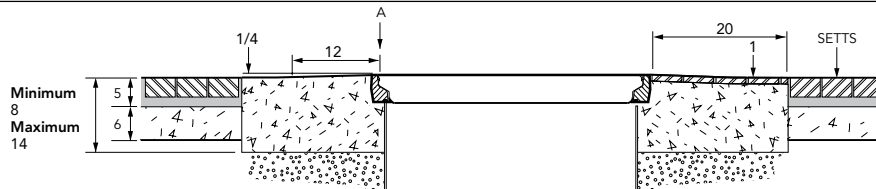


ALTERNATIVE INSTALLATION ADVICE

TARMACADAM



SETTS



59" diameter 12 sided sump with reverse flange, corbel, adjustable height skirt, internal lid with dip tube hole, round 40" flat sealed cover and frame with central dip cover.

For reference purposes only. This drawing is not a specification. Order against product code only. To enable continuous improvement of our products, the designs and specifications are subject to change without notice.

FIBRELITE

PART OF OPW A DOVER COMPANY