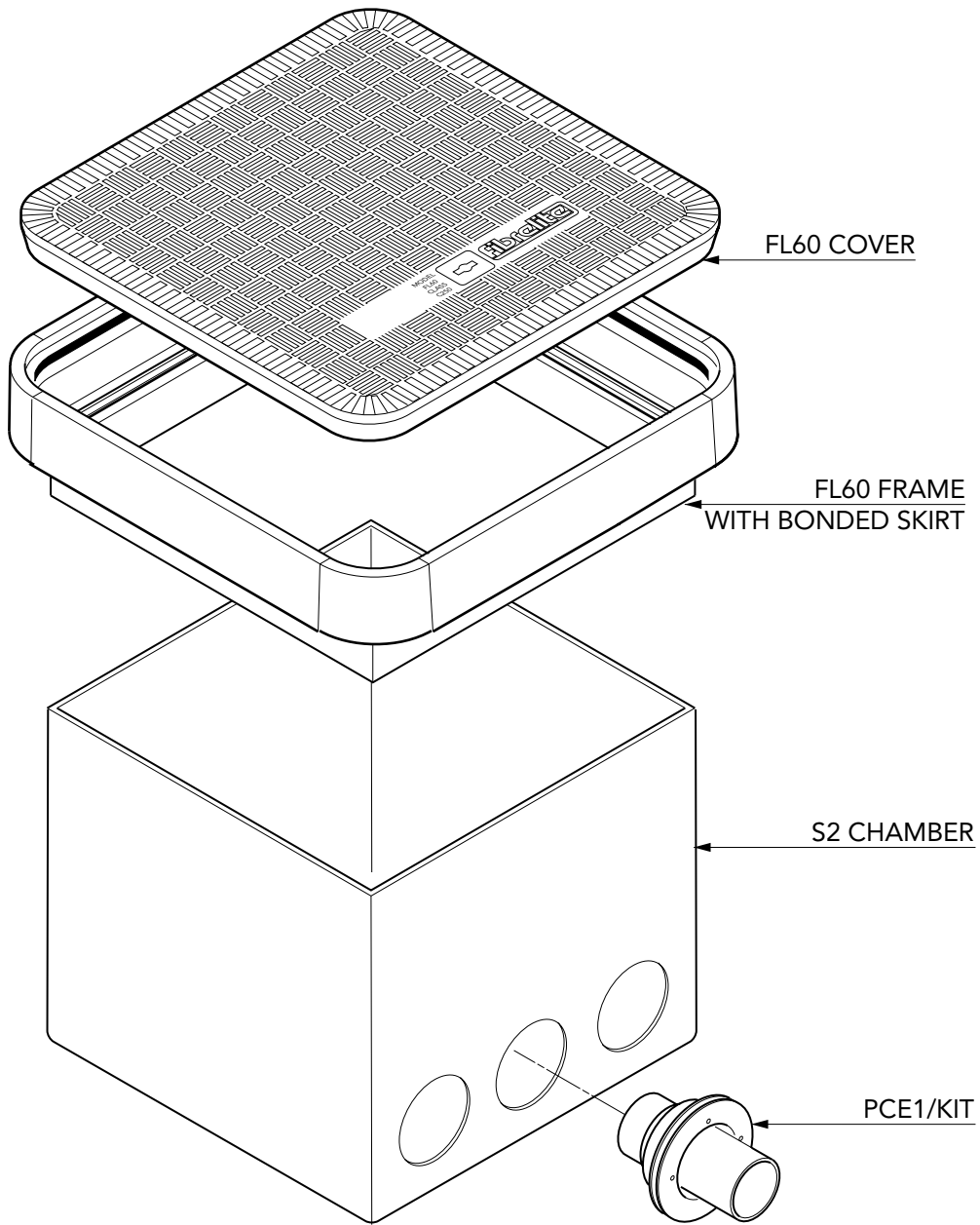


Electrical Drawpit - 23 5/8" cubed GRP chamber with a 4 11/32" deep GRP skirt and 23 5/8" square flat sealed cover.

For reference purposes only. This drawing is not a specification. Order against product code only. To enable continuous improvement of our products, the designs and specifications are subject to change without notice.

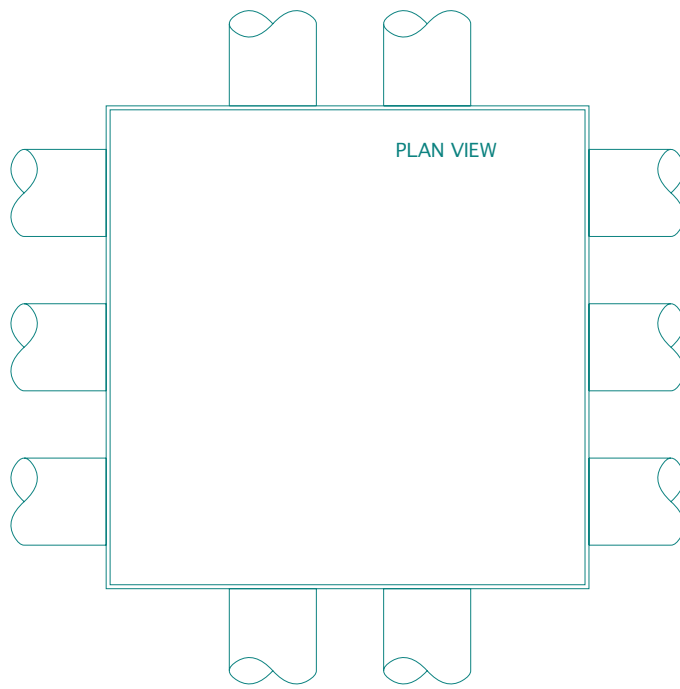
**FIBRELITE**   
PART OF OPW A DOVER COMPANY



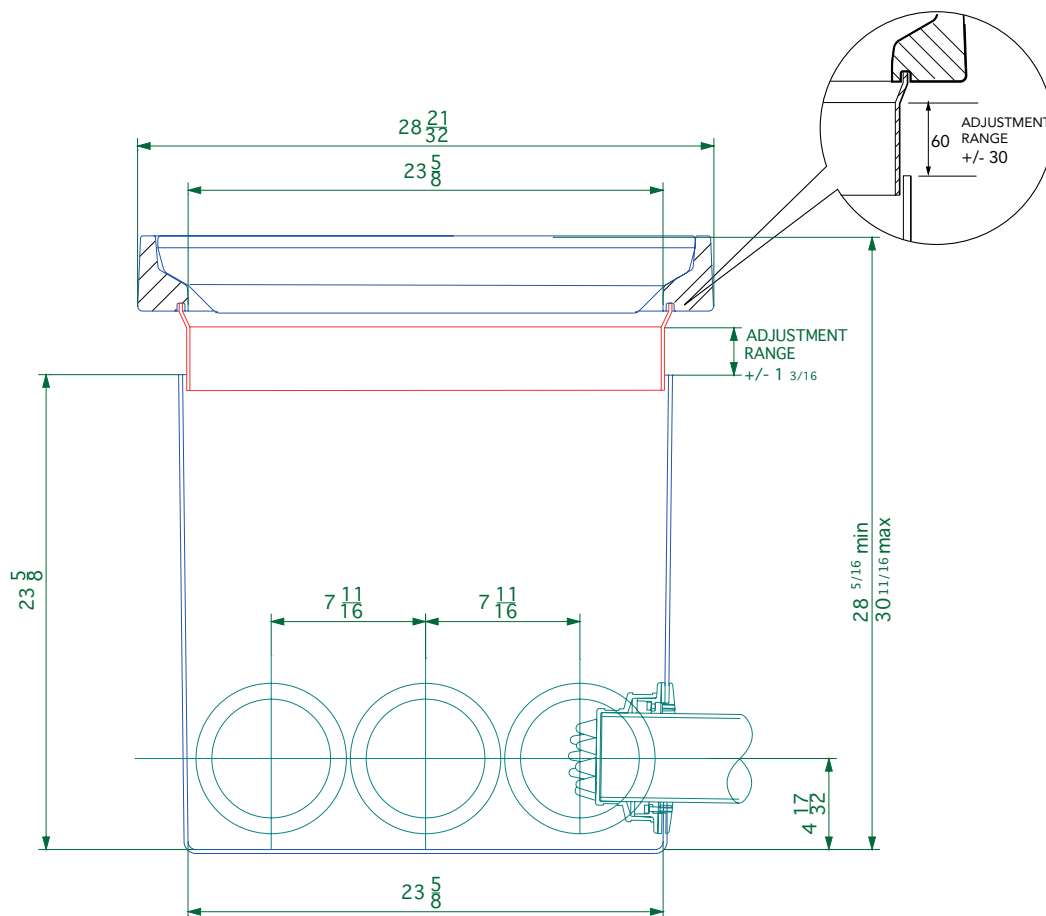
Electrical Drawpit - 23 5/8" cubed GRP chamber with a 4 11/32" deep GRP skirt and 23 5/8" square flat sealed cover.

For reference purposes only. This drawing is not a specification. Order against product code only. To enable continuous improvement of our products, the designs and specifications are subject to change without notice.

**FIBRELITE**   
PART OF OPW A DOVER COMPANY



MAX. 3 15/16" Ducts  
 Single bank of 3 ducts in two  
 opposing sides and single bank  
 of 2 ducts in adjacent sides.



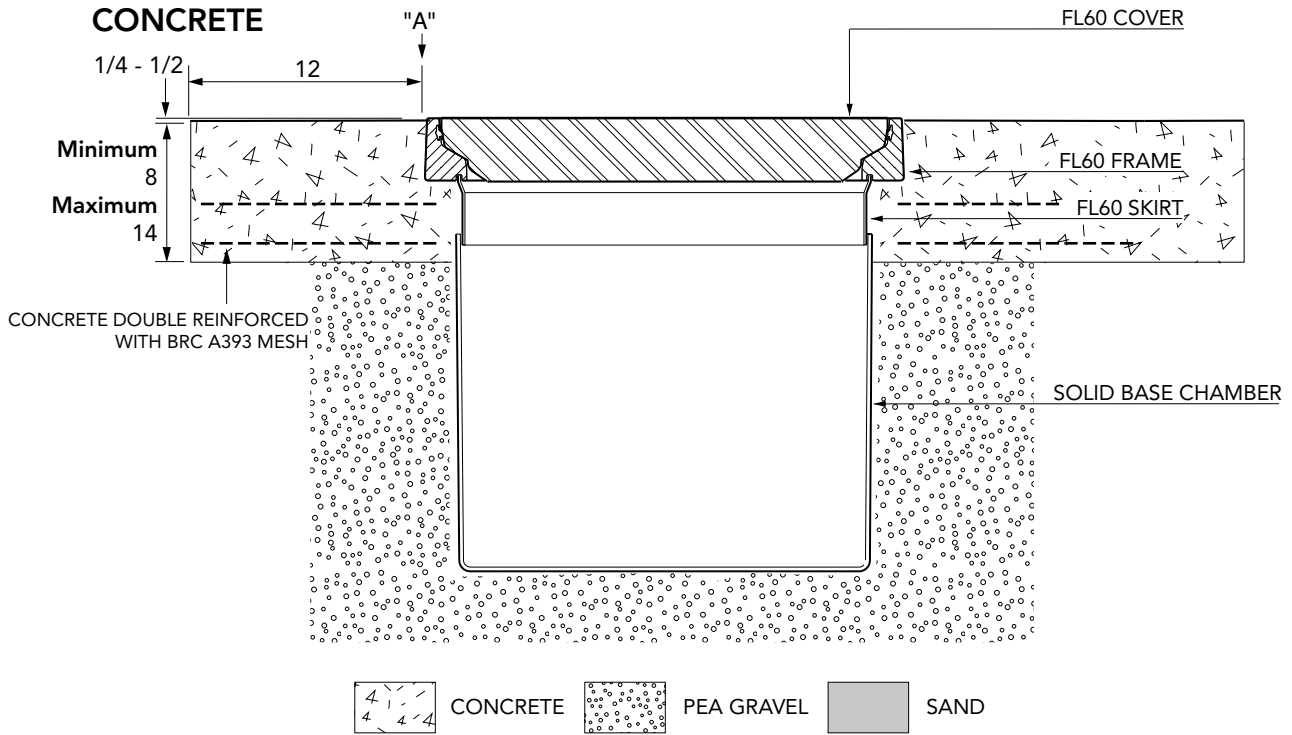
Electrical Drawpit - 23 5/8" cubed GRP chamber with a 4 11/32" deep GRP skirt and 23 5/8" square flat sealed cover.

For reference purposes only. This drawing is not a specification. Order against product code only. To enable continuous improvement of our products, the designs and specifications are subject to change without notice.

**FIBRELITE**   
 PART OF OPW A DOVER COMPANY

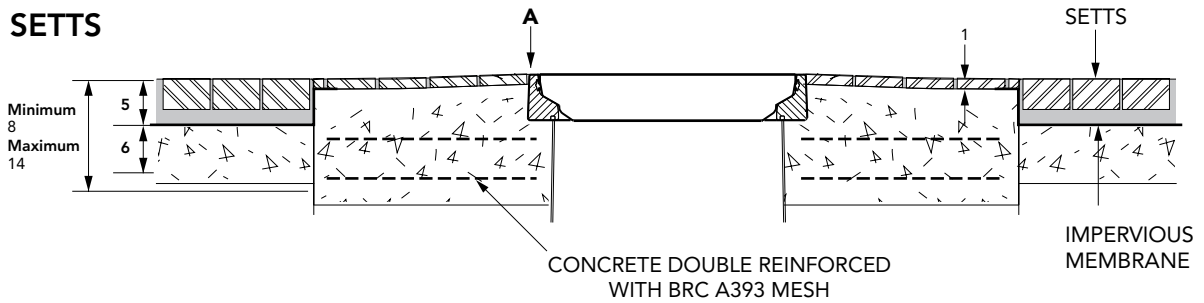
**VERY IMPORTANT**  
 OUTER EDGE "A" OF FRAME SET 1/4 - 1/2"  
 ABOVE GENERAL FORECOURT AREA WITH  
 CONCRETE RAMPED AWAY OVER 12"

**TYPICAL INSTALLATION**



**ALTERNATIVE INSTALLATION ADVICE**

**SETTS**



**TARMACADAM**

