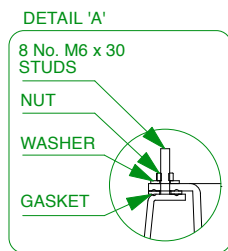


ITEM	DESCRIPTION	CODE	QTY
1	Fibrelite FL180 Cover	FL180	1
2	Fibrelite FL180 Frame	FL180F	1
3	Fibrelite 5 1/8" Deep Skirt	FL180-SK130	1
4	Spill Container Gasket	--	1
5	Fibrelite Self levelling Seal	S-CS-SEALANT	1
6	Fibrelite Corbel	S57-3180-CORBEL	1
7	Fibrelite Spill Container	S57-3180-OF-SC	1
8	Fibrelite Inspection Cap	--	1
9	Fibrelite Grounding Cable Seal	PEC2-33	1
10	Fibrelite Grounding Cable Strap	--	1
11	Fibrelite 23" x 25" deep Sump	S57	1
12	Fibrelite Pipe Support Foot	PSF-110	1

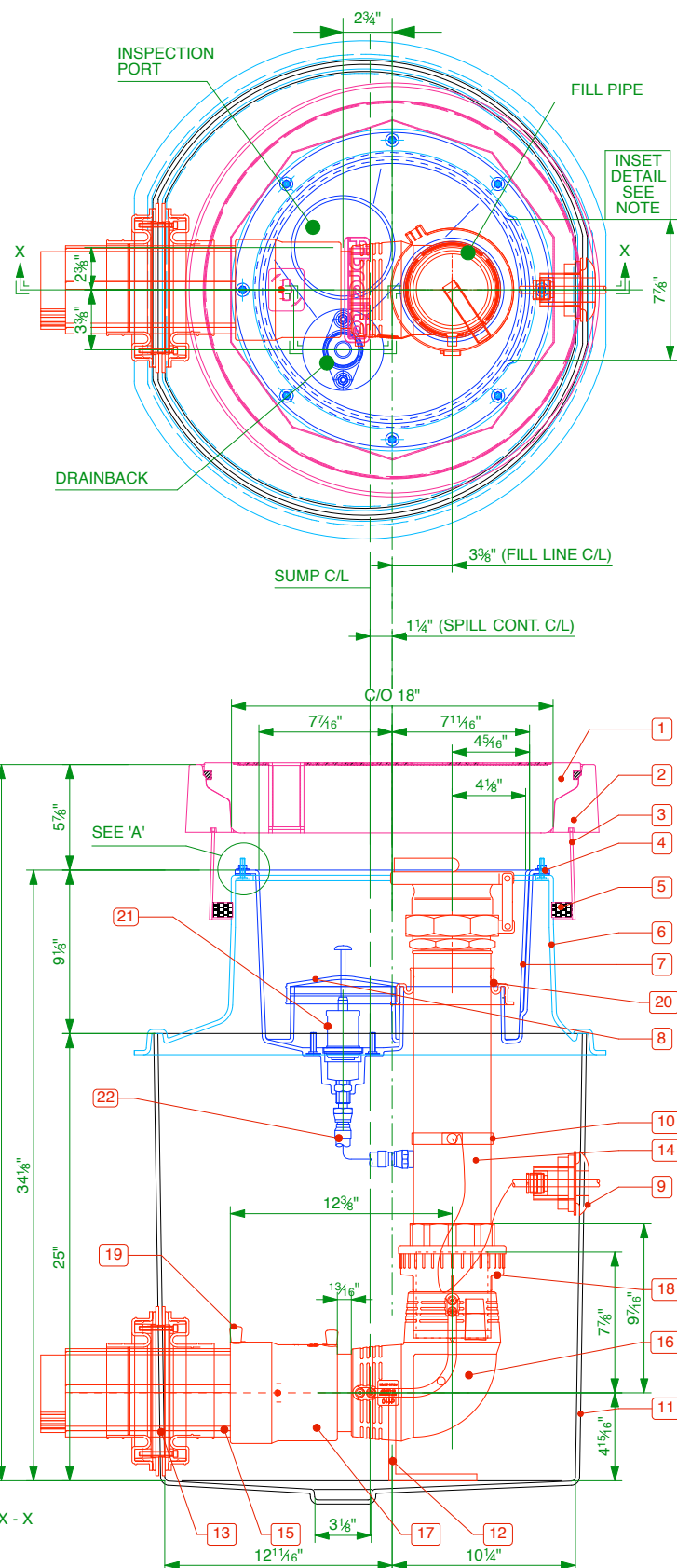
ITEM	4" FILL	CODE	QTY
13	Fibrelite Viton Ø4 15/16" Double Sided Pipe Entry Seal	PSBD-125-V	1
14	Riser Pipe 4"	001-110-XXX-E	1
15	EN Pipe - 4 15/16" Secondary	000-125-XXX-SC-E	1
16	Primary 90° Elbow	03-110-EIF	1
17	REDUCER	49-125-110-TP	1
18	4 5/16", 4" Female	92-110-BSPT	1
19	CAP,ANTI-STATIC,12	ESI-CAP-012	6
20	PSB-110G Viton Entry Boot	PSB-110G-V	1

No.	DRAIN BACK	QTY
21	Draw Back valve	1
22	Drainback hose kit, consisting of: flexible drain back hose, 1/2" BSPT male x male cone faced adaptor, 1/2" BSP 1/2 socket	1



NOTE:

THE SPILL CONTAINER AND CORBEL CONTAIN A SPECIAL INSET SECTION TO ALLOW FOR EASY ACCESS OF GOOSENECK DELIVERY HOSES



Drawing Code: S57-3180-OFD-U1

Scale: 1:10 (Do not scale)

Copyright by Fibrelite. Illegal use is prohibited, reproductions only with permission of Fibrelite.

Description: Secondary contained remote fill sump. 23" dia. x 25" deep solid base sump with a sealed secondary spill container with integrated drainback system. 18" dia flat sealed cover and frame. Sealkits included.

Issue: A

Date: 28/04/2019

Drawn: DH/MW

Snaygill Industrial Estate, Keighley Road  
Skipton, North Yorkshire, BD23 2QR

fibrelite.com enquiries@fibrelite.com

FIBRELITE

PART OF OPW A OILWELL SERVICES