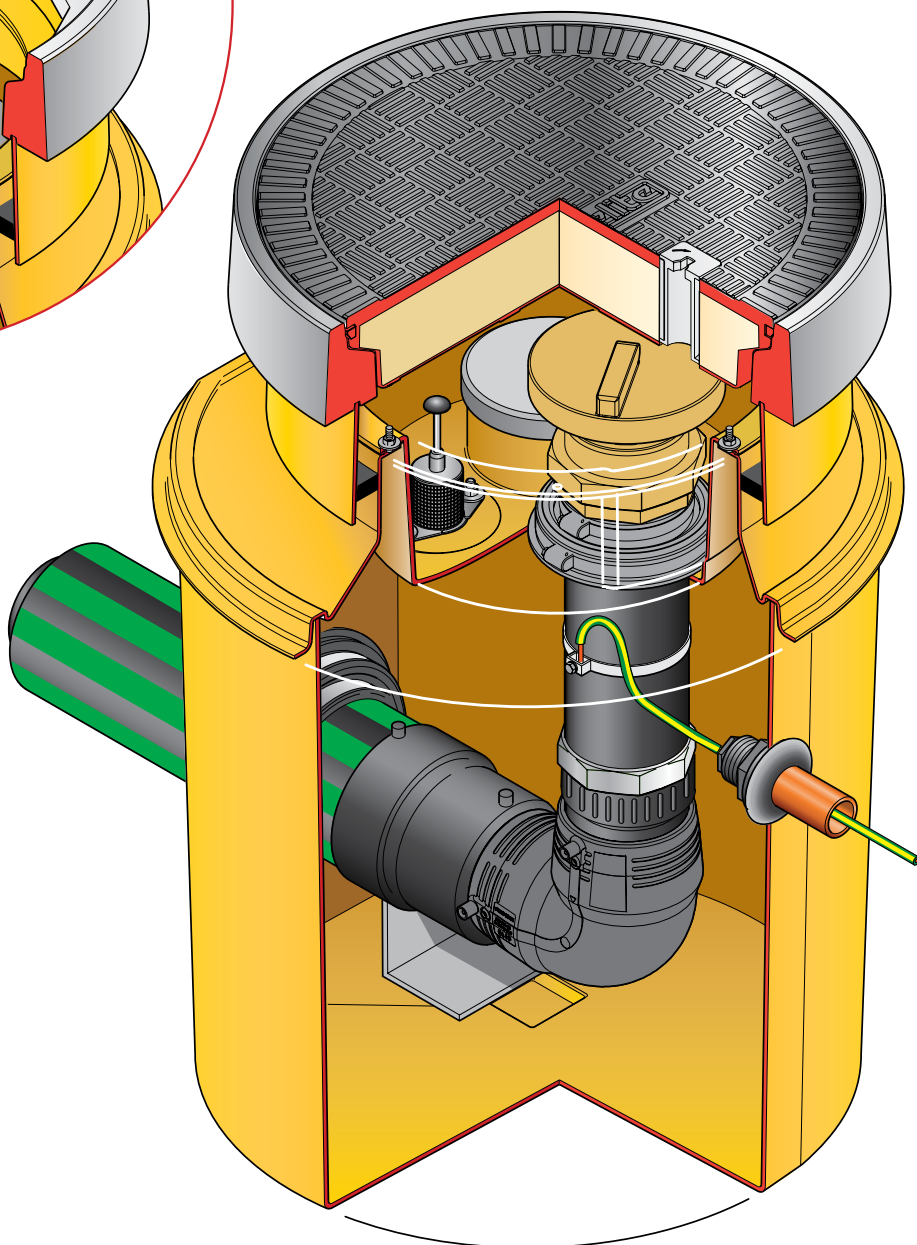


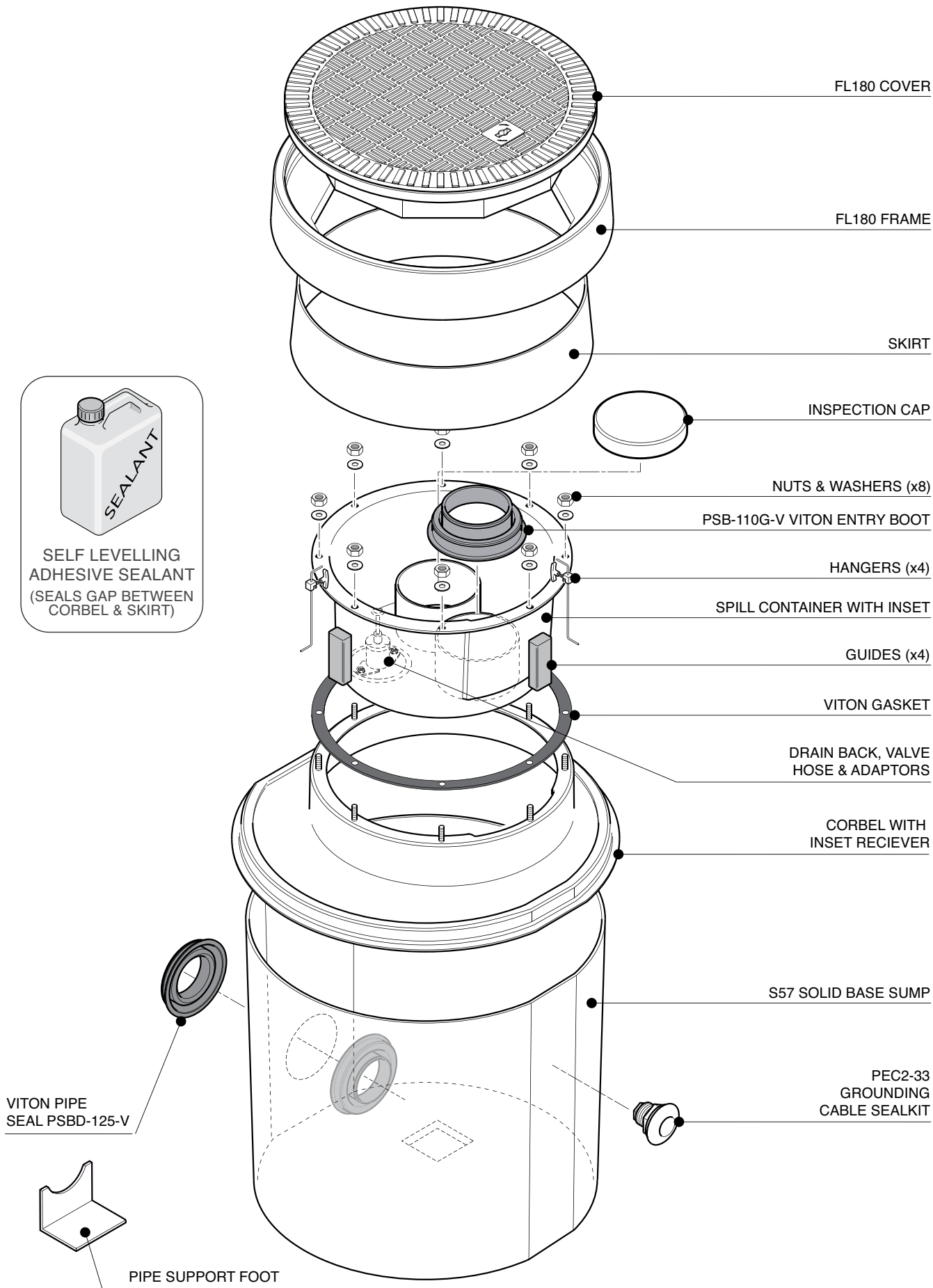
THE SPILL CONTAINER AND AND CORBEL CONTAIN  
A SPECIAL INSET SECTION TO ALLOW FOR EASY  
ACCESS OF GOOSENECK DELIVERY HOSES



Secondary contained remote fill sump. 23" dia. x 25" deep solid base sump with a sealed secondary spill container with integrated drainback system. 18" dia flat sealed cover and frame. Sealkits included.

For reference purposes only. This drawing is not a specification. Order against product code only. To enable continuous improvement of our products, the designs and specifications are subject to change without notice.

**FIBRELITE**   
PART OF OPW A DOVER COMPANY



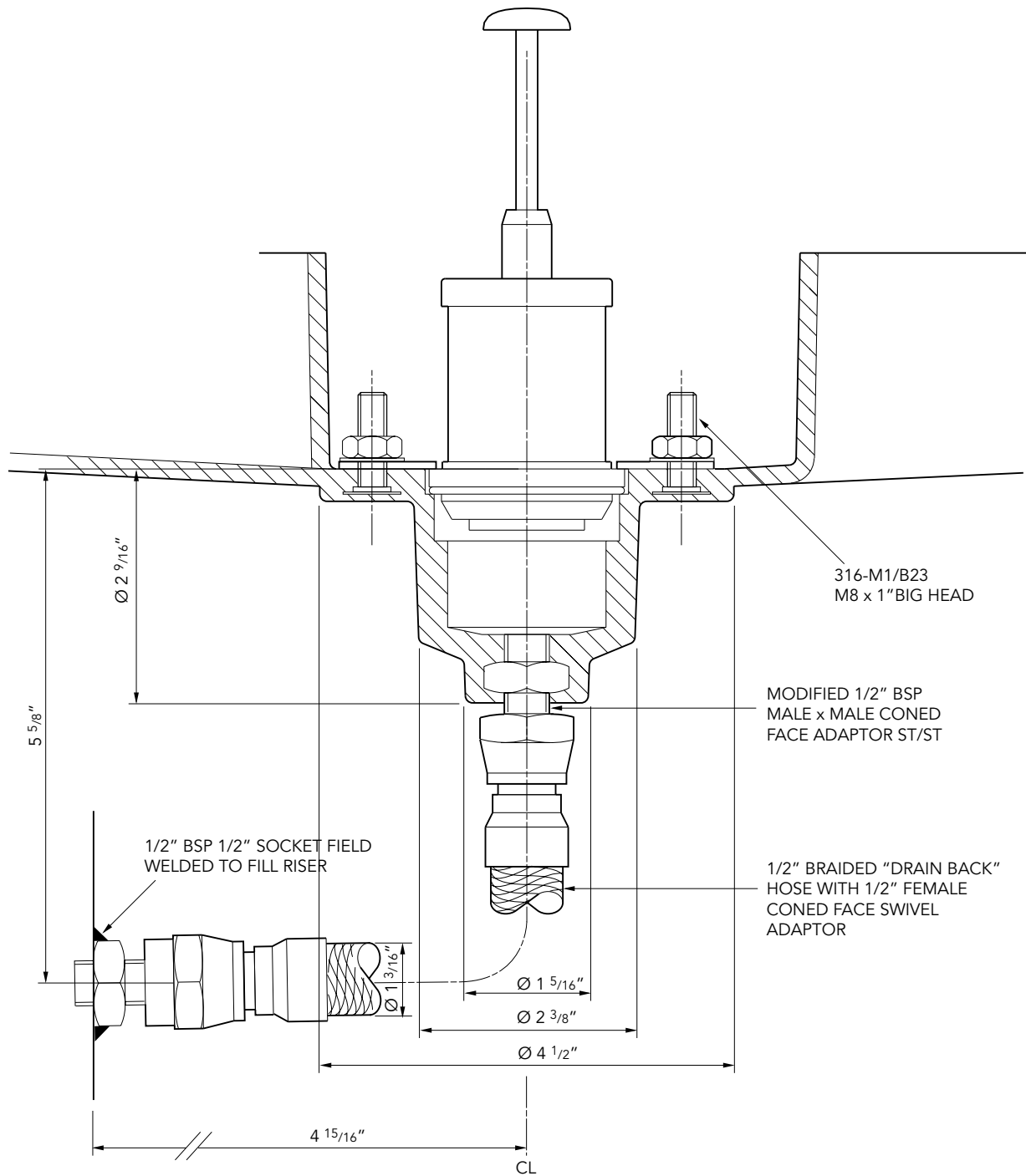
Secondary contained remote fill sump. 23" dia. x 25" deep solid base sump with a sealed secondary spill container with integrated drainback system. 18" dia flat sealed cover and frame. Sealkits included.

For reference purposes only. This drawing is not a specification. Order against product code only. To enable continuous improvement of our products, the designs and specifications are subject to change without notice.

**FIBRELITE**   
PART OF OPW A DOVER COMPANY



## Drainback Detail



Secondary contained remote fill sump. 23" dia. x 25" deep solid base sump with a sealed secondary spill container with integrated drainback system. 18" dia flat sealed cover and frame. Sealkits included.

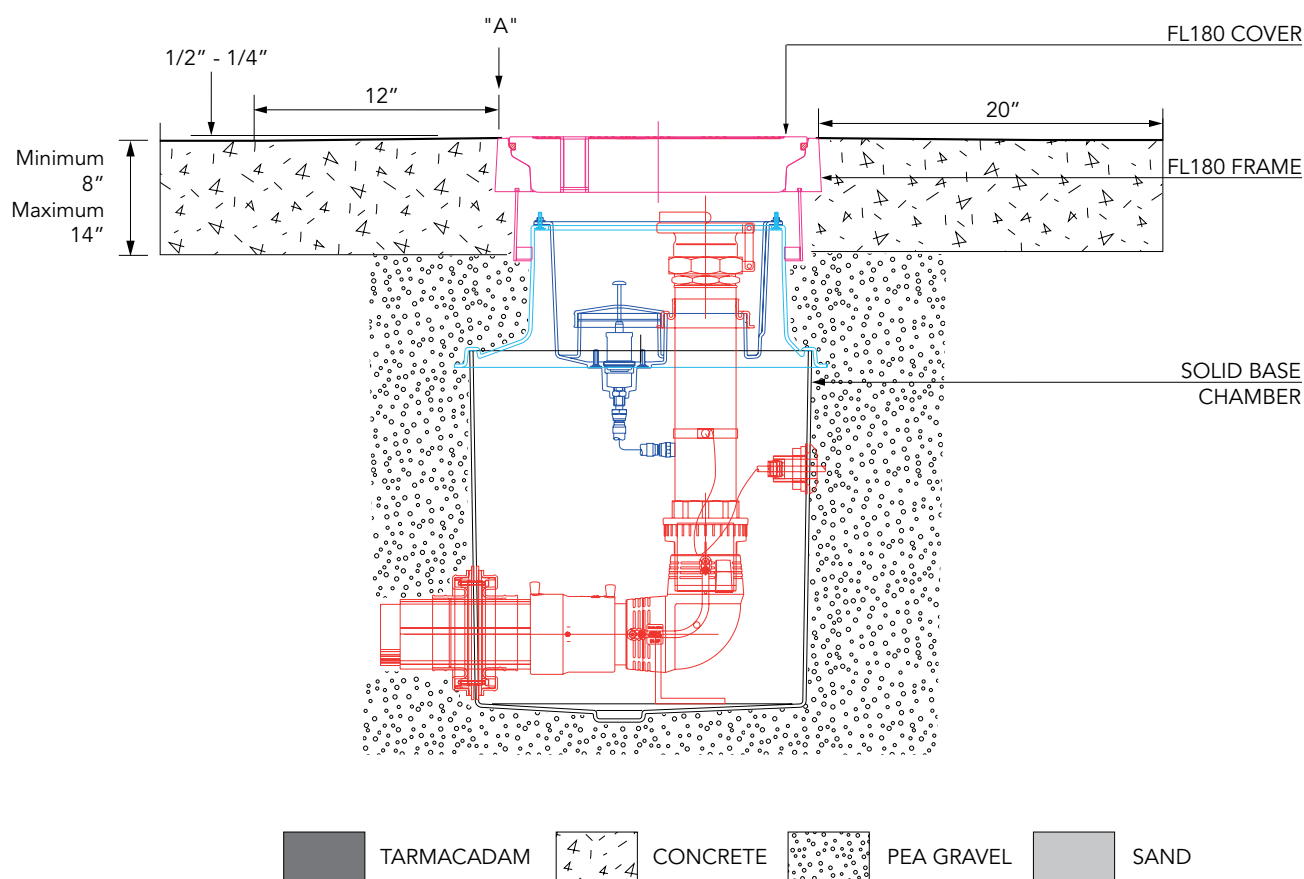
For reference purposes only. This drawing is not a specification. Order against product code only. To enable continuous improvement of our products, the designs and specifications are subject to change without notice.

**FIBRELITE**   
PART OF OPW A DOVER COMPANY

**VERY IMPORTANT**  
 OUTER EDGE "A" OF FRAME SET 1/2" - 1/4"  
 ABOVE GENERAL FORECOURT AREA WITH  
 CONCRETE RAMPED AWAY OVER 12".

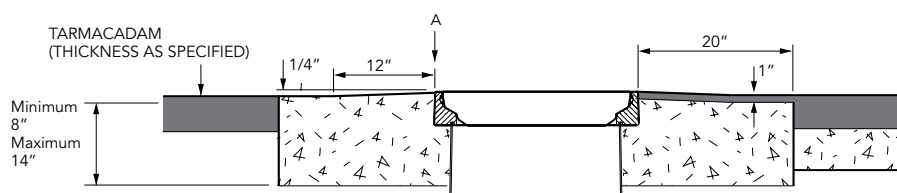
## TYPICAL INSTALLATION

### CONCRETE

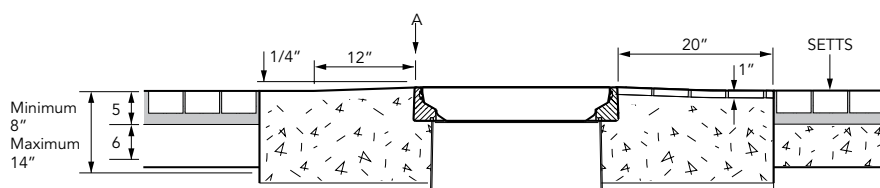


## ALTERNATIVE INSTALLATION ADVICE

### TARMACADAM



### SETTS



Secondary contained remote fill sump. 23" dia. x 25" deep solid base sump with a sealed secondary spill container with integrated drainback system. 18" dia flat sealed cover and frame. Sealkits included.

For reference purposes only. This drawing is not a specification. Order against product code only. To enable continuous improvement of our products, the designs and specifications are subject to change without notice.

**FIBRELITE**  
 PART OF OPW A DOVER COMPANY