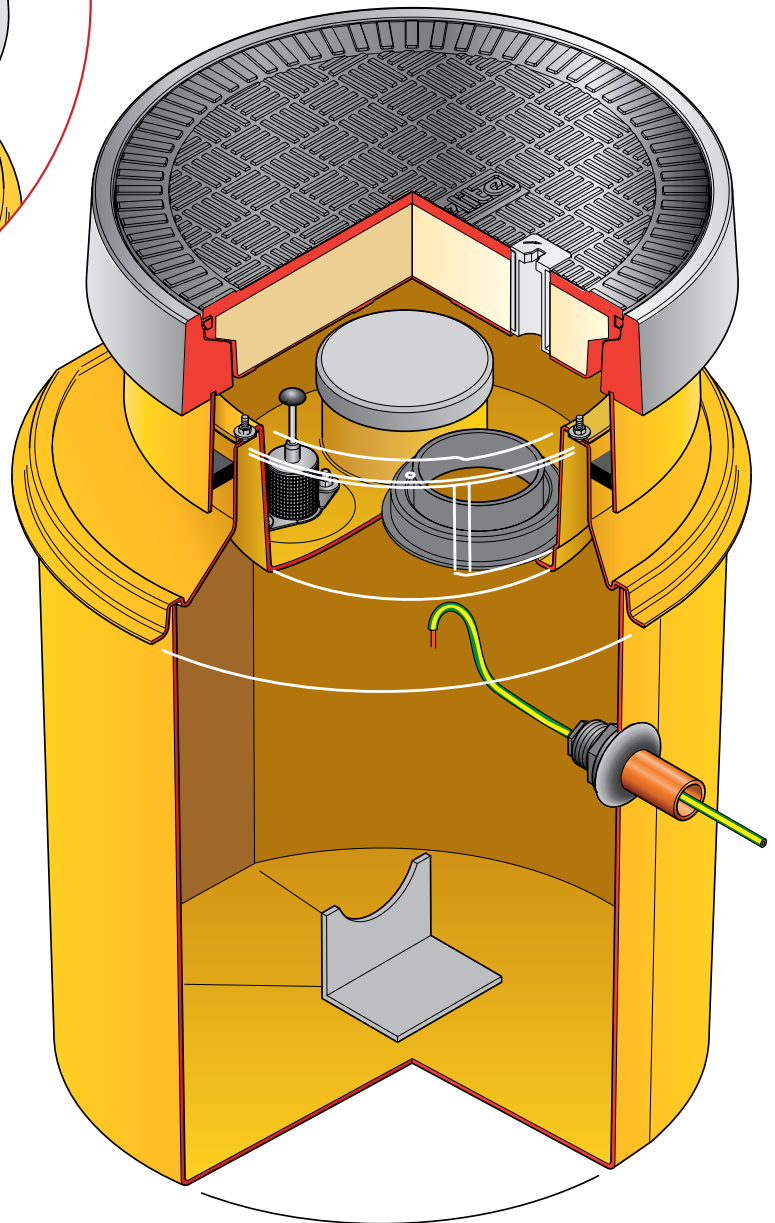
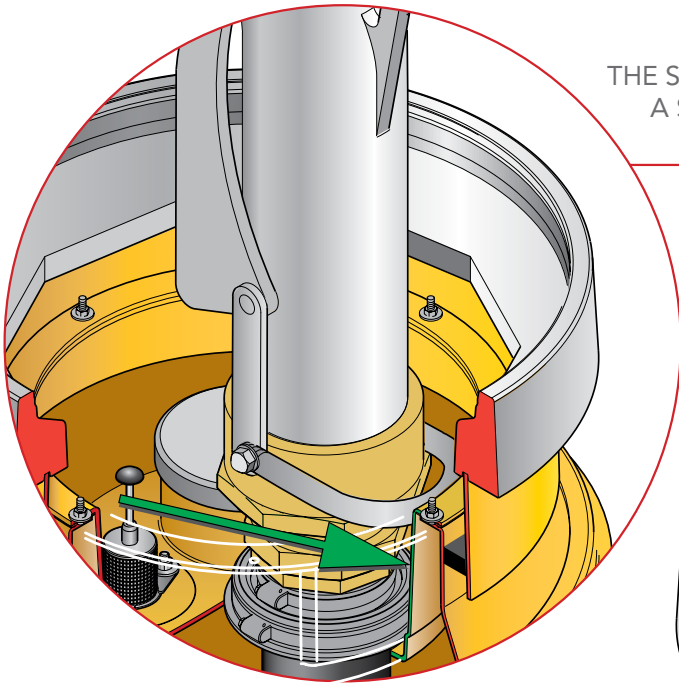


THE SPILL CONTAINER AND AND CORBEL CONTAIN
A SPECIAL INSET SECTION TO ALLOW FOR EASY
ACCESS OF GOOSENECK DELIVERY HOSES



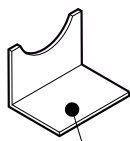
Secondary contained remote fill sump. 23" dia. x 25" deep solid base sump and a sealed secondary spill container. 18" dia flat sealed cover and frame. Includes PSB-110-PS 4 5/16" dia. spill tray fill riser sealkit and grounding cable sealkit.

For reference purposes only. This drawing is not a specification. Order against product code only. To enable continuous improvement of our products, the designs and specifications are subject to change without notice.

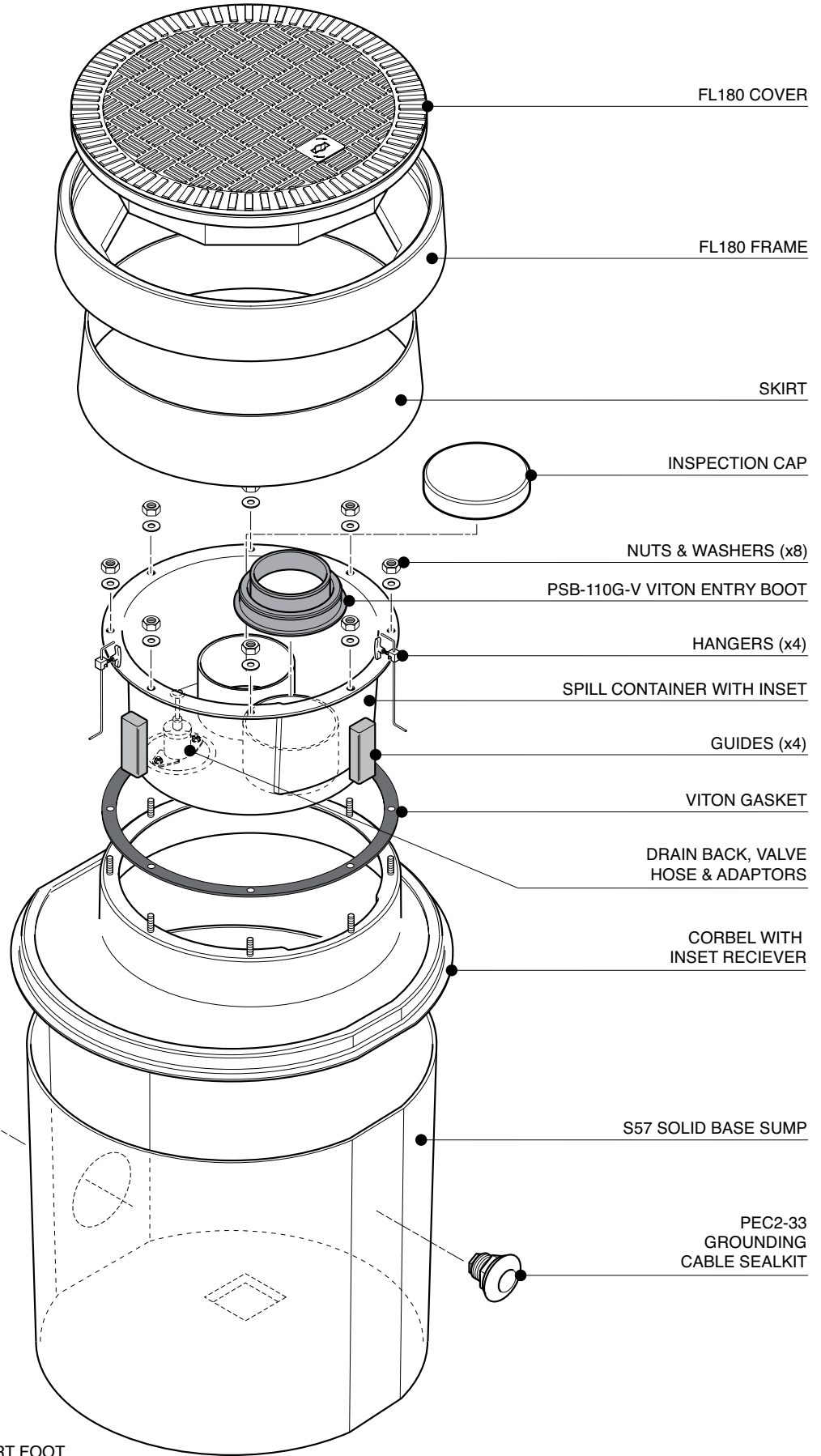
FIBRELITE 
PART OF OPW A DOVER COMPANY



SELF LEVELLING
ADHESIVE SEALANT
(SEALS GAP BETWEEN
CORBEL & SKIRT)

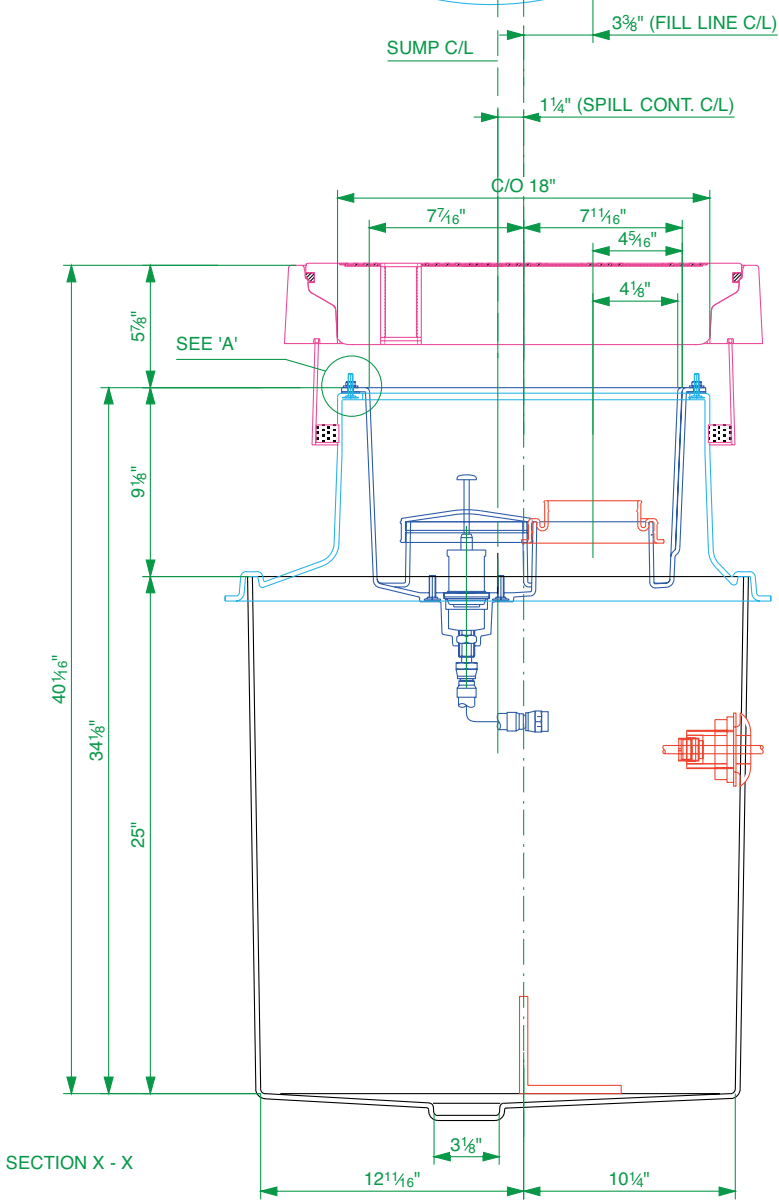
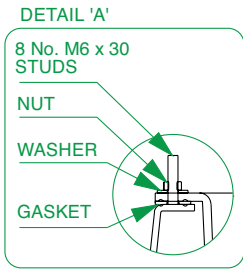
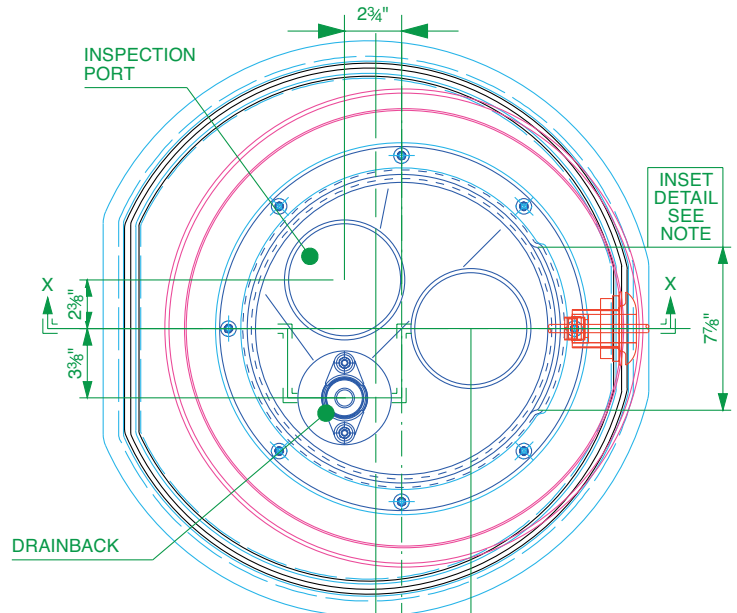


PIPE SUPPORT FOOT



Secondary contained remote fill sump. 23" dia. x 25" deep solid base sump and a sealed secondary spill container. 18" dia flat sealed cover and frame. Includes PSB-110-PS 4 5/16" dia. spill tray fill riser sealkit and grounding cable sealkit.

For reference purposes only. This drawing is not a specification. Order against product code only. To enable continuous improvement of our products, the designs and specifications are subject to change without notice.



NOTE:

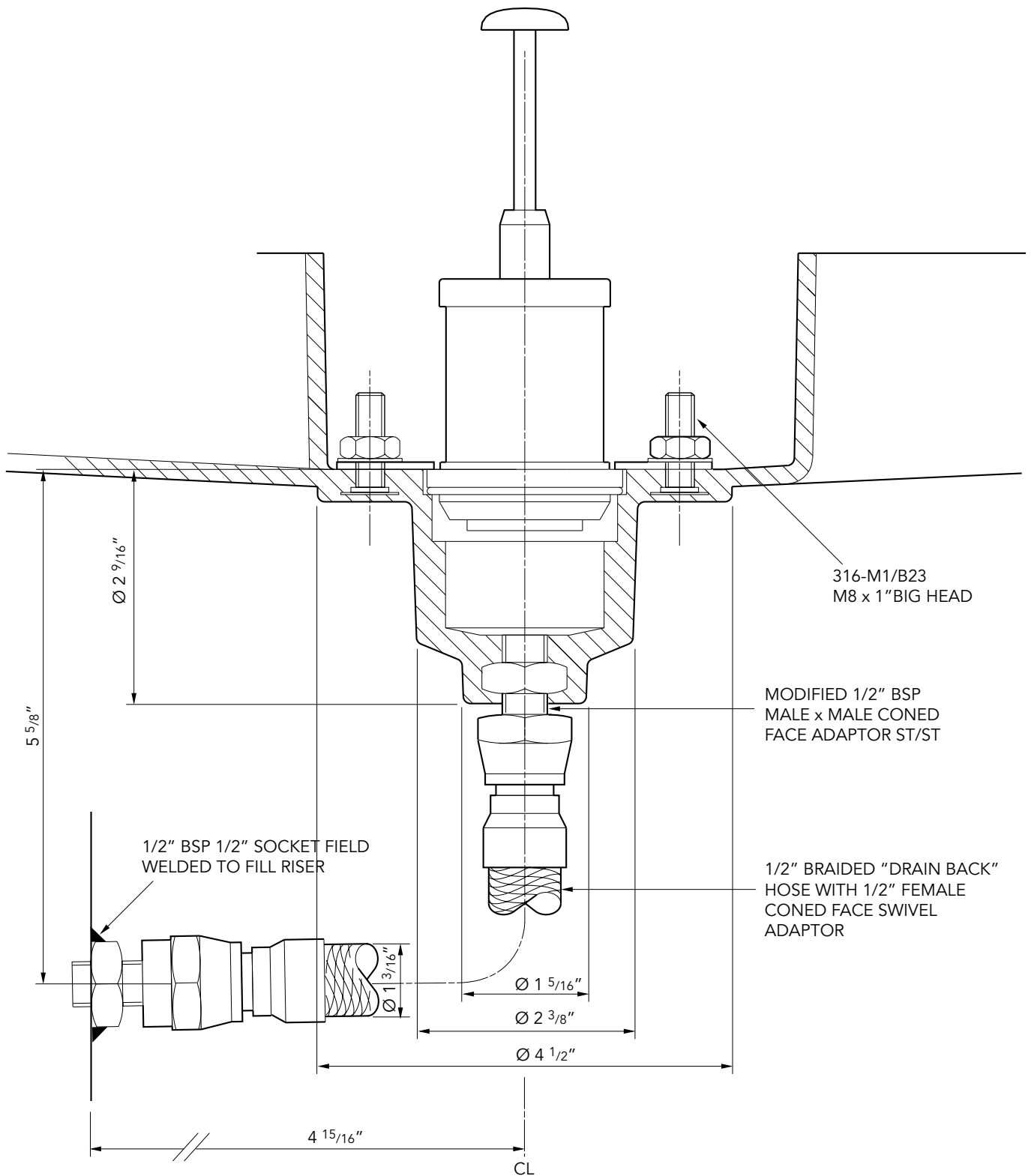
THE SPILL CONTAINER AND CORBEL CONTAIN A SPECIAL INSET SECTION TO ALLOW FOR EASY ACCESS OF GOOSENECK DELIVERY HOSES

Spill Containment Capacity = 5.8 US Gal.

Secondary contained remote fill sump. 23" dia. x 25" deep solid base sump and a sealed secondary spill container. 18" dia flat sealed cover and frame. Includes PSB-110-PS 4 5/16" dia. spill tray fill riser sealkit and grounding cable sealkit.

For reference purposes only. This drawing is not a specification. Order against product code only. To enable continuous improvement of our products, the designs and specifications are subject to change without notice.





316-M1/B23
M8 x 1" BIG HEAD

MODIFIED 1/2" BSP
MALE x MALE CONED
FACE ADAPTOR ST/ST

1/2" BRAIDED "DRAIN BACK"
HOSE WITH 1/2" FEMALE
CONED FACE SWIVEL
ADAPTOR

1/2" BSP 1/2" SOCKET FIELD
WELDED TO FILL RISER

Secondary contained remote fill sump. 23" dia. x 25" deep solid base sump and a sealed secondary spill container. 18" dia flat sealed cover and frame. Includes PSB-110-PS 4 5/16" dia. spill tray fill riser sealkit and grounding cable sealkit.

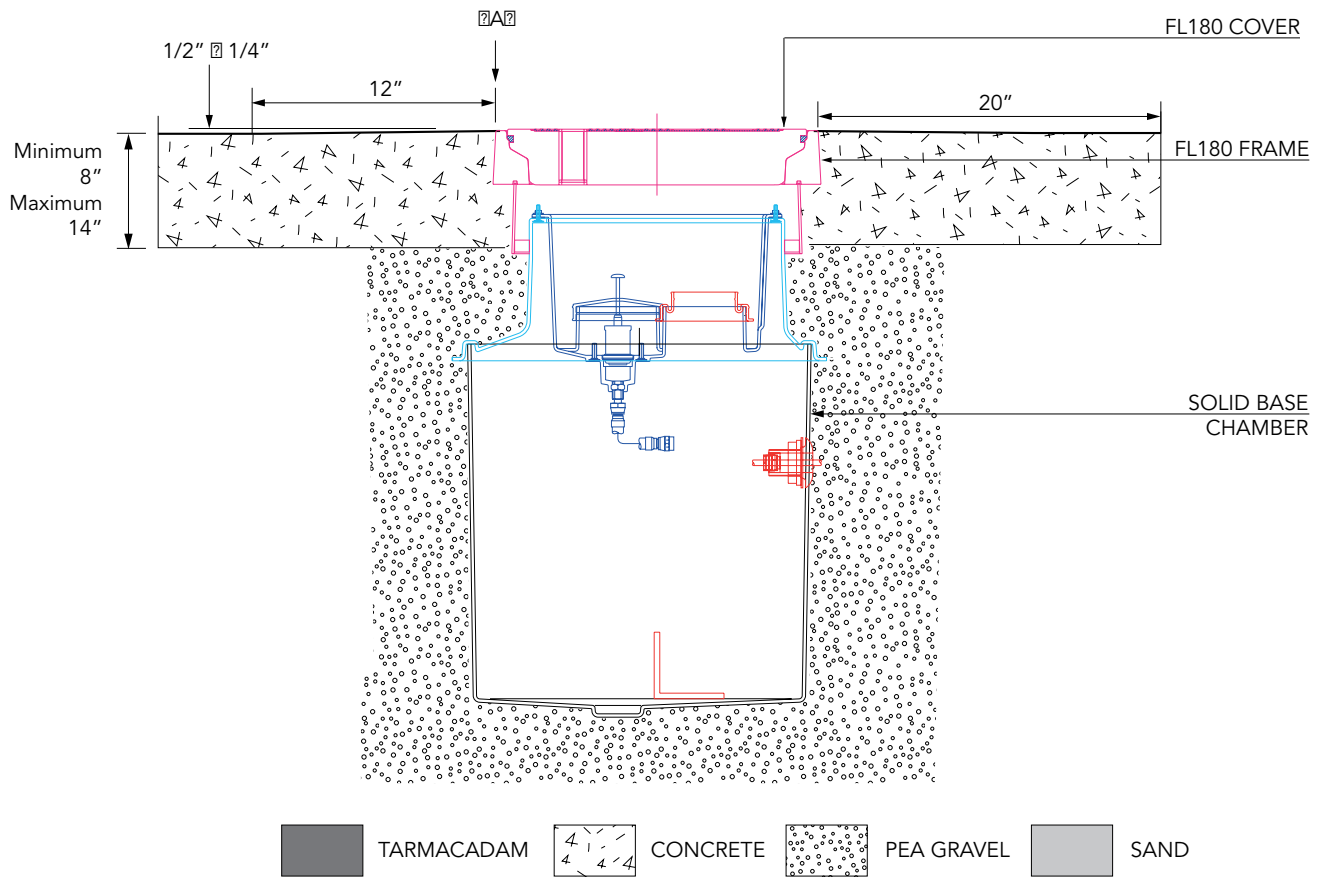
For reference purposes only. This drawing is not a specification. Order against product code only. To enable continuous improvement of our products, the designs and specifications are subject to change without notice.

FIBRELITE 
PART OF OPW A DOVER COMPANY

VERY IMPORTANT
 OUTER EDGE OF FRAME SET 1/2" ± 1/4"
 ABOVE GENERAL FORECAST AREA WITH
 CONCRETE RAMPED AT 1:1 OVER 12"

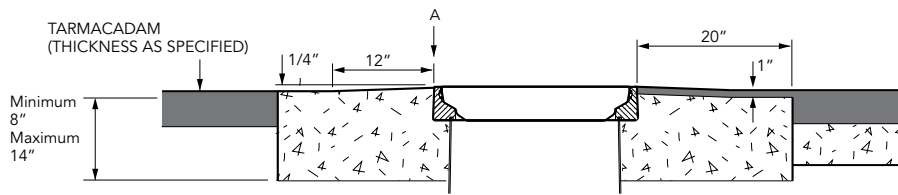
TYPICAL INSTALLATION

CONCRETE

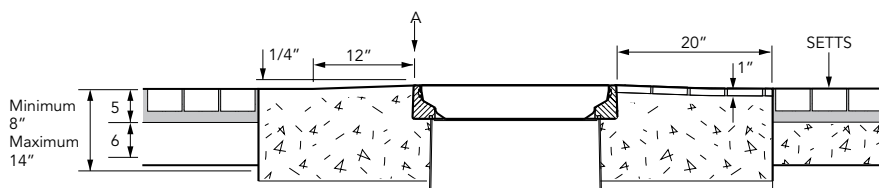


ALTERNATIVE INSTALLATION ADVICE

TARMACADAM



SETTS



Secondary contained remote fill sump. 23" dia. x 25" deep solid base sump and a sealed secondary spill container. 18" dia flat sealed cover and frame. Includes PSB-110-PS 4 5/16" dia. spill tray fill riser sealkit and grounding cable sealkit.

For reference purposes only. This drawing is not a specification. Order against product code only. To enable continuous improvement of our products, the designs and specifications are subject to change without notice.

