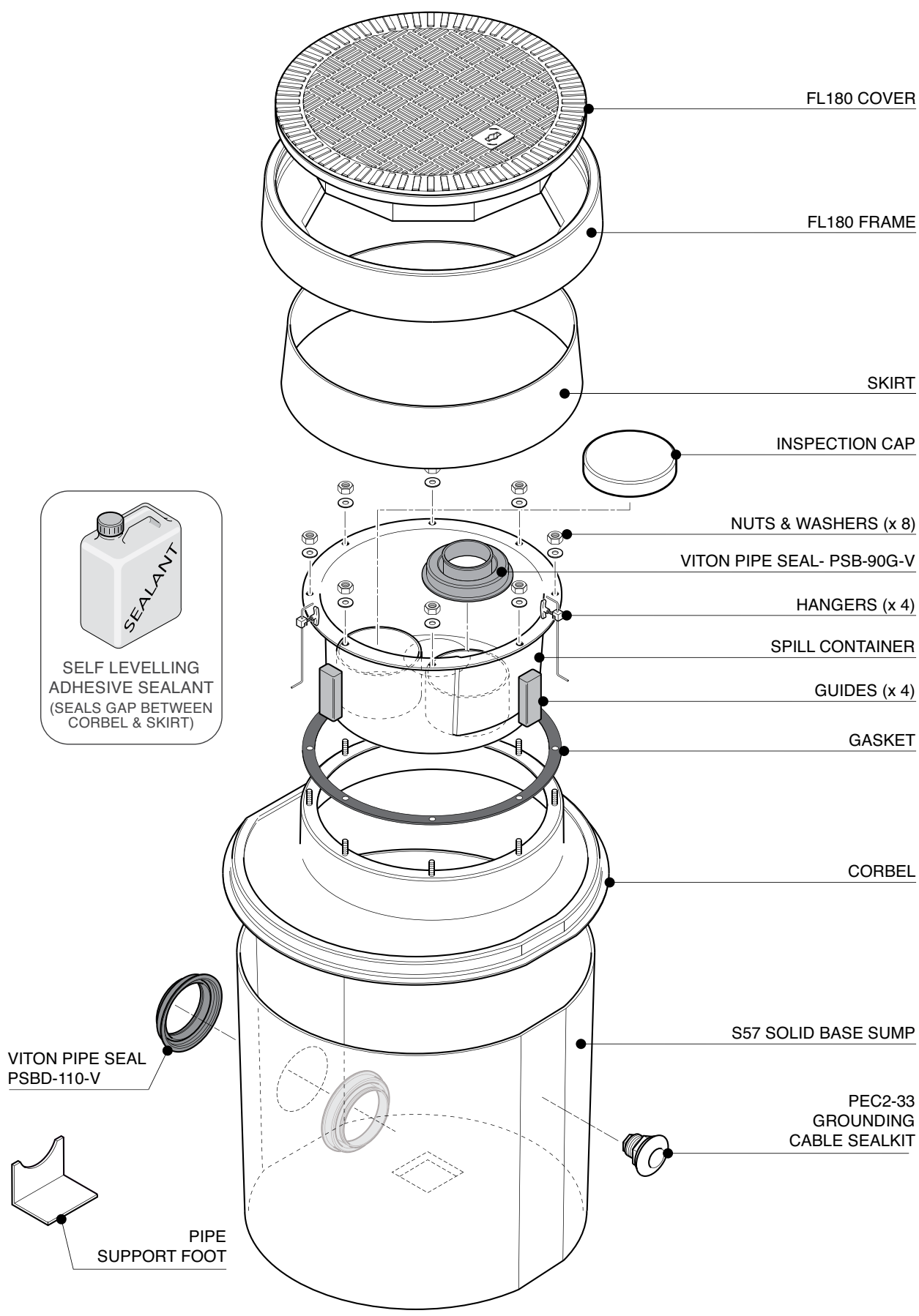


Secondary contained vapour recovery sump. 23" dia. x 25" deep solid base sump with a sealed secondary spill container. 18" dia flat sealed cover and frame. Sealkits included.

For reference purposes only. This drawing is not a specification. Order against product code only. To enable continuous improvement of our products, the designs and specifications are subject to change without notice.

FIBRELITE 
PART OF OPW A DOVER COMPANY



FL180 COVER

FL180 FRAME

SKIRT

INSPECTION CAP

NUTS & WASHERS (x 8)

VITON PIPE SEAL- PSB-90G-V

HANGERS (x 4)

SPILL CONTAINER

GUIDES (x 4)

GASKET

CORBEL

S57 SOLID BASE SUMP

PEC2-33
GROUNDING
CABLE SEALKIT

SEALANT

SELF LEVELLING
ADHESIVE SEALANT
(SEALS GAP BETWEEN
CORBEL & SKIRT)

VITON PIPE SEAL
PSBD-110-V

PIPE
SUPPORT FOOT

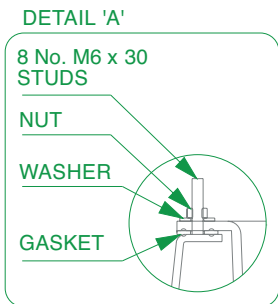
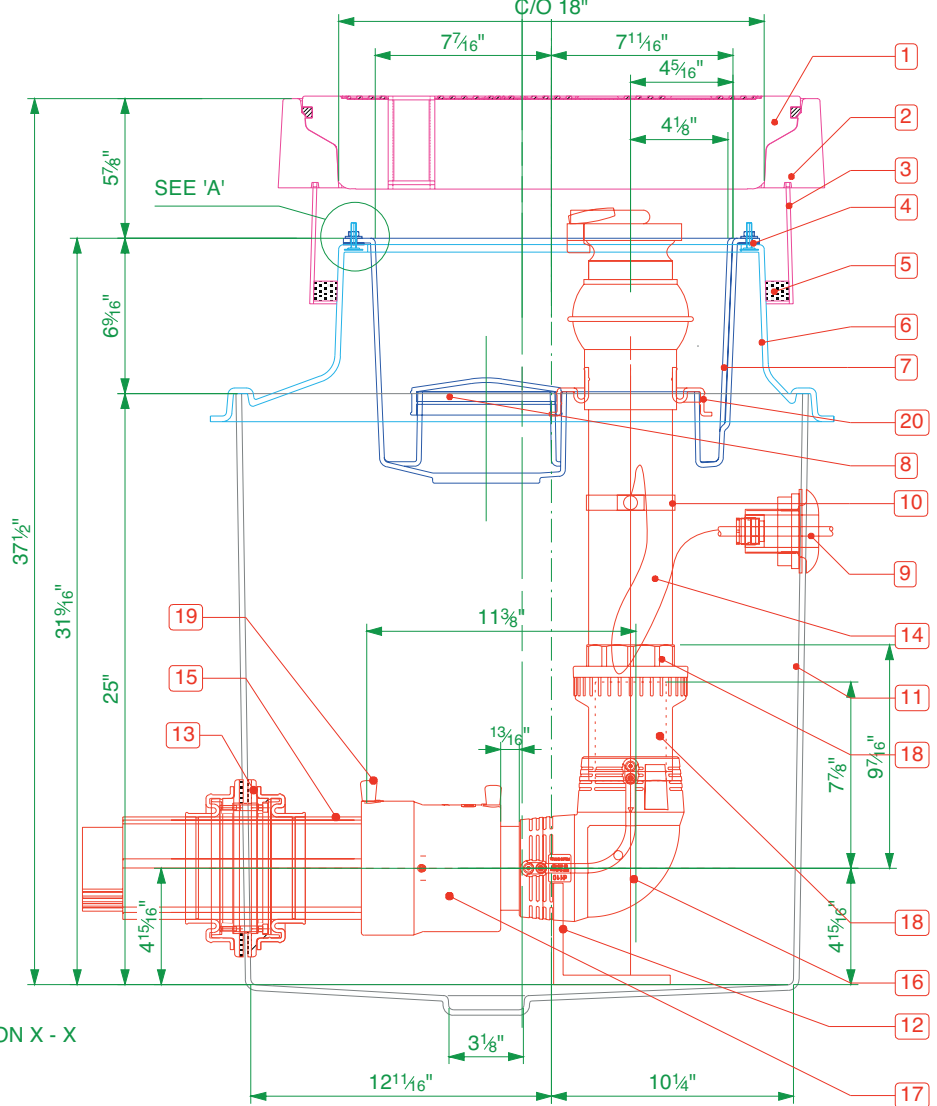
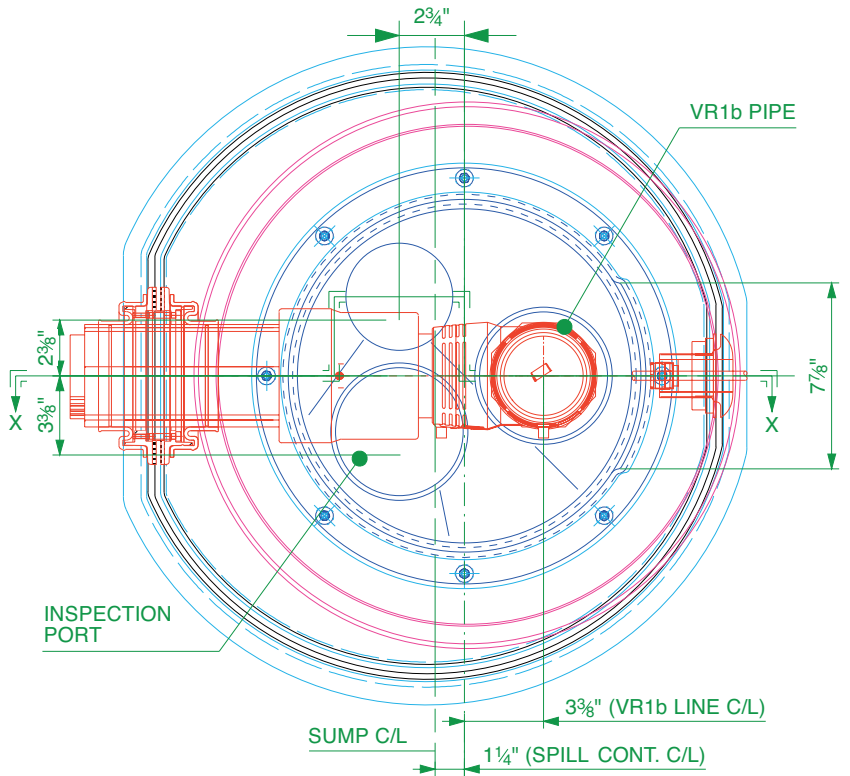
Secondary contained vapour recovery sump. 23" dia. x 25" deep solid base sump with a sealed secondary spill container. 18" dia flat sealed cover and frame. Sealkits included.

For reference purposes only. This drawing is not a specification. Order against product code only. To enable continuous improvement of our products, the designs and specifications are subject to change without notice.



ITEM	DESCRIPTION	CODE	QTY
1	Fibrelite FL180 Cover	FL180	1
2	Fibrelite FL180 Frame	FL180F	1
3	Fibrelite 5 1/8" Deep Skirt	FL180-SK130	1
4	Spill Container Gasket	--	1
5	Fibrelite Self levelling Seal	S-CS-SEALANT	1
6	Fibrelite Corbel	S57-3180-CORBEL	1
7	Fibrelite Spill Container	S57-3180-OF-SC	1
8	Fibrelite Inspection Cap	--	1
9	Fibrelite Grounding Cable Seal	PEC2-33	1
10	Fibrelite Grounding Cable Strap	--	1
11	Fibrelite 23" x 25" deep Sump	S57	1
12	Fibrelite Pipe Support Foot	PSF-110	1

ITEM	VR1b	CODE	QTY
13	Fibrelite Viton Ø4 5/16" Double Sided Pipe Entry Seal	PSBD-110-V	1
14	Riser Pipe 3"	001-90-XXX-E	1
15	EN Pipe - 4 5/16" Secondary	000-110-XXX-SC-E	1
16	Primary 90° Elbow	03-090-EIF	1
17	REDUCER	49-110-090-TP	1
18	UPP Fusion Coupler 3 9/16"	02.90	1
19	Cap, Anti-Static, 12	ESI-CAP-012	6
20	PSB-90G Viton Entry Boot	PSB-90G-V	1



Spill Containment Capacity = 5.8 US Gal.

Secondary contained vapour recovery sump. 23" dia. x 25" deep solid base sump with a sealed secondary spill container. 18" dia flat sealed cover and frame. Sealkits included.

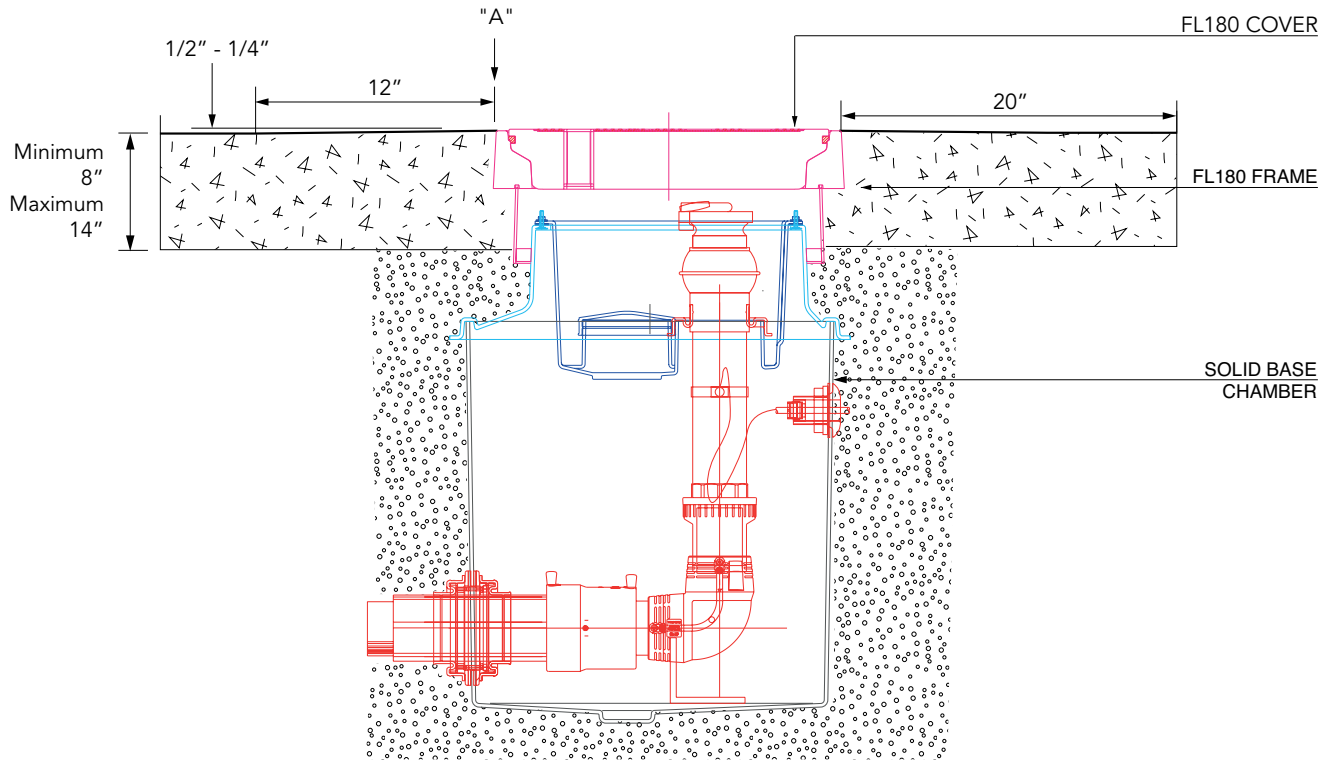
For reference purposes only. This drawing is not a specification. Order against product code only. To enable continuous improvement of our products, the designs and specifications are subject to change without notice.



VERY IMPORTANT
 OUTER EDGE "A" OF FRAME SET 1/2" - 1/4"
 ABOVE GENERAL FORECOURT AREA WITH
 CONCRETE RAMPED AWAY OVER 12".

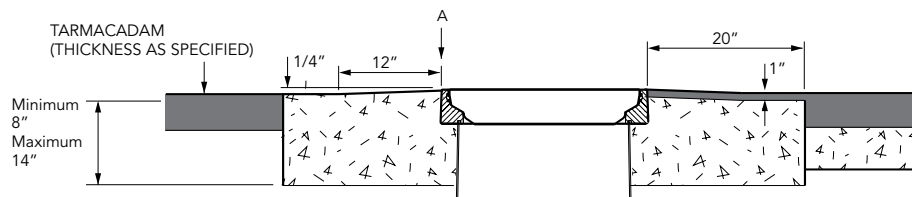
TYPICAL INSTALLATION

CONCRETE

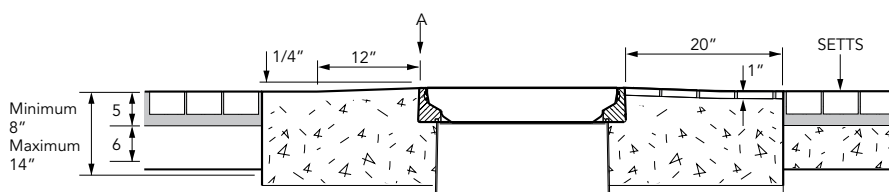


ALTERNATIVE INSTALLATION ADVICE

TARMACADAM



SETTS



Secondary contained vapour recovery sump. 23" dia. x 25" deep solid base sump with a sealed secondary spill container. 18" dia flat sealed cover and frame. Sealkits included.

For reference purposes only. This drawing is not a specification. Order against product code only. To enable continuous improvement of our products, the designs and specifications are subject to change without notice.

