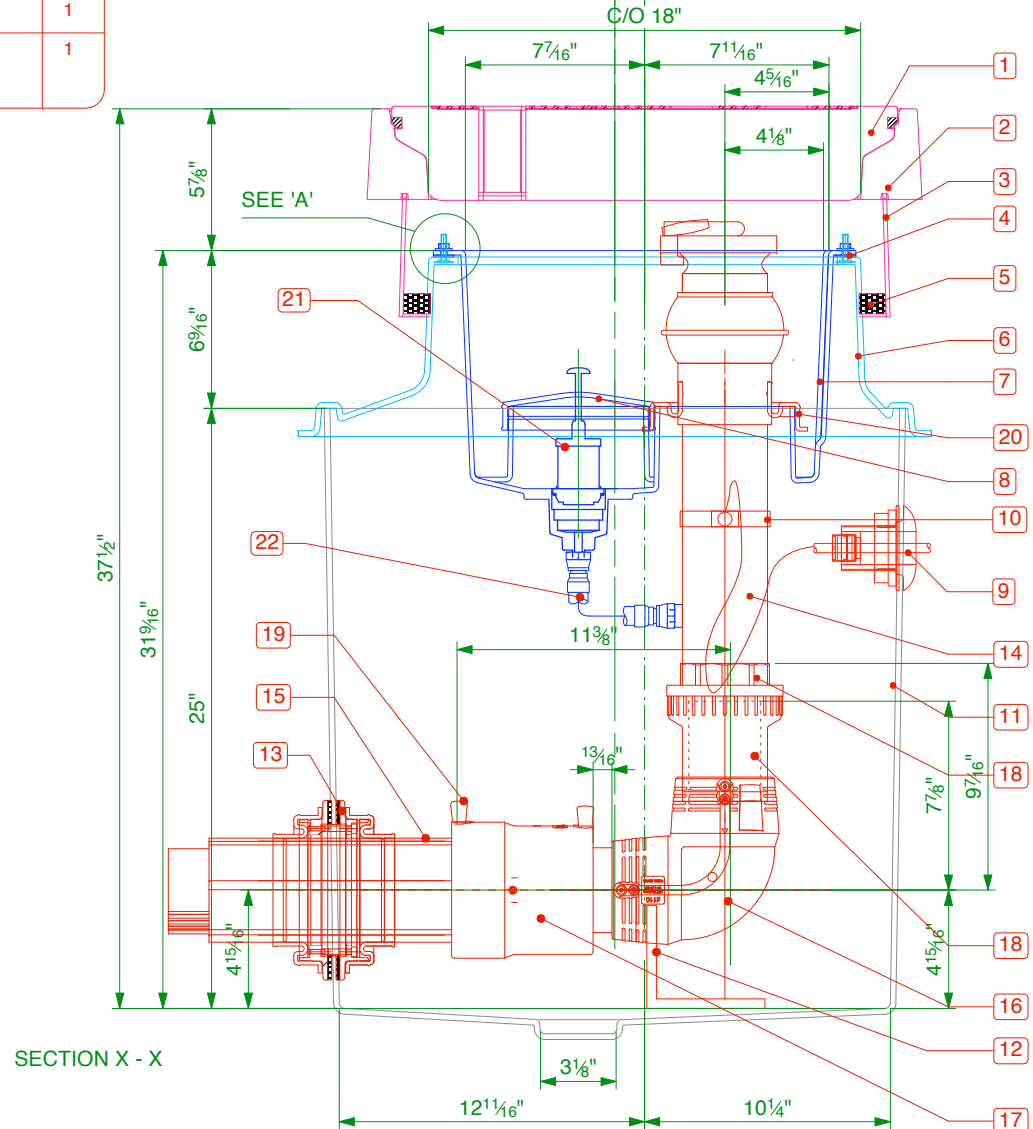
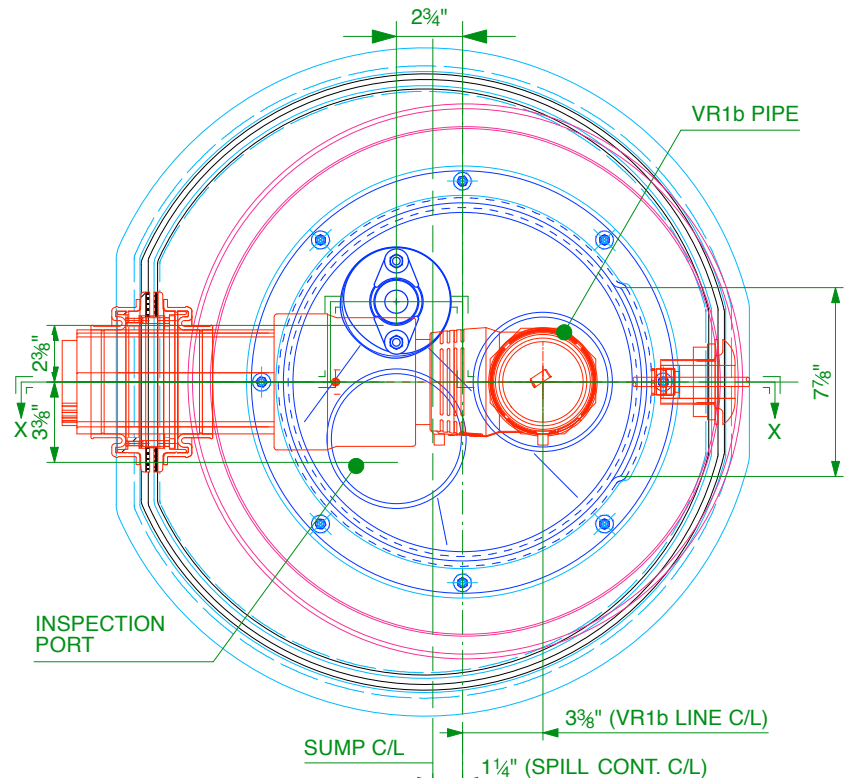
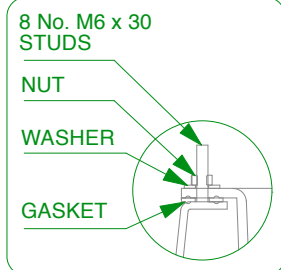


ITEM	DESCRIPTION	CODE	QTY
1	Fibrelite FL180 Cover	FL180	1
2	Fibrelite FL180 Frame	FL180F	1
3	Fibrelite 5 1/8" Deep Skirt	FL180-SK130	1
4	Spill Container Gasket	--	1
5	Fibrelite Self levelling Seal	S-CS-SEALANT	1
6	Fibrelite Corbel	S57-3180-CORBEL	1
7	Fibrelite Spill Container	S57-3180-OF-SC	1
8	Fibrelite Inspection Cap	--	1
9	Fibrelite Grounding Cable Seal	PEC2-33	1
10	Fibrelite Grounding Cable Strap	--	1
11	Fibrelite 23" x 25" deep Sump	S57	1
12	Fibrelite Pipe Support Foot	PSF-110	1

ITEM	VR1b	CODE	QTY
13	Fibrelite Viton Ø4 5/16" Double Sided Pipe Entry Seal	PSBD-110-V	1
14	Riser Pipe 3"	001-90-XXX-E	1
15	EN Pipe - 4 5/16" Secondary	000-110-XXX-SC-E	1
16	Primary 90° Elbow	03-090-EIF	1
17	REDUCER	49-110-090-TP	1
18	UPP Fusion Coupler 3 9/16"	02.90	1
19	Cap, Anti-Static, 12	ESI-CAP-012	6
20	PSB-90G Viton Entry Boot	PSB-90G-V	1

No.	DRAIN BACK	QTY
21	Draw Back valve	1
22	Drainback hose kit, consisting of; flexible drain back hose, 1/2" BSPT male x male cone faced adaptor, 1/2" BSP 1/2 socket	1

DETAIL 'A'



Drawing Code: S57-3180-UVR1BD

Scale: 1:8 (Do not scale)

Copyright by Fibrelite. Illegal use is prohibited, reproductions only with permission of Fibrelite.

Description: Secondary contained vapour recovery sump, 23" dia. x 25" deep solid base sump with a sealed secondary spill container and integrated drainback system. 18" dia flat sealed cover and frame. Pipework included.

Issue: A

Date: 28/04/2019

Drawn: DH/MW

Snaygill Industrial Estate, Keighley Road
Skipton, North Yorkshire, BD23 2QR
fibrelite.com enquiries@fibrelite.com

FIBRELITE

PART OF CPW & COVER 03060207