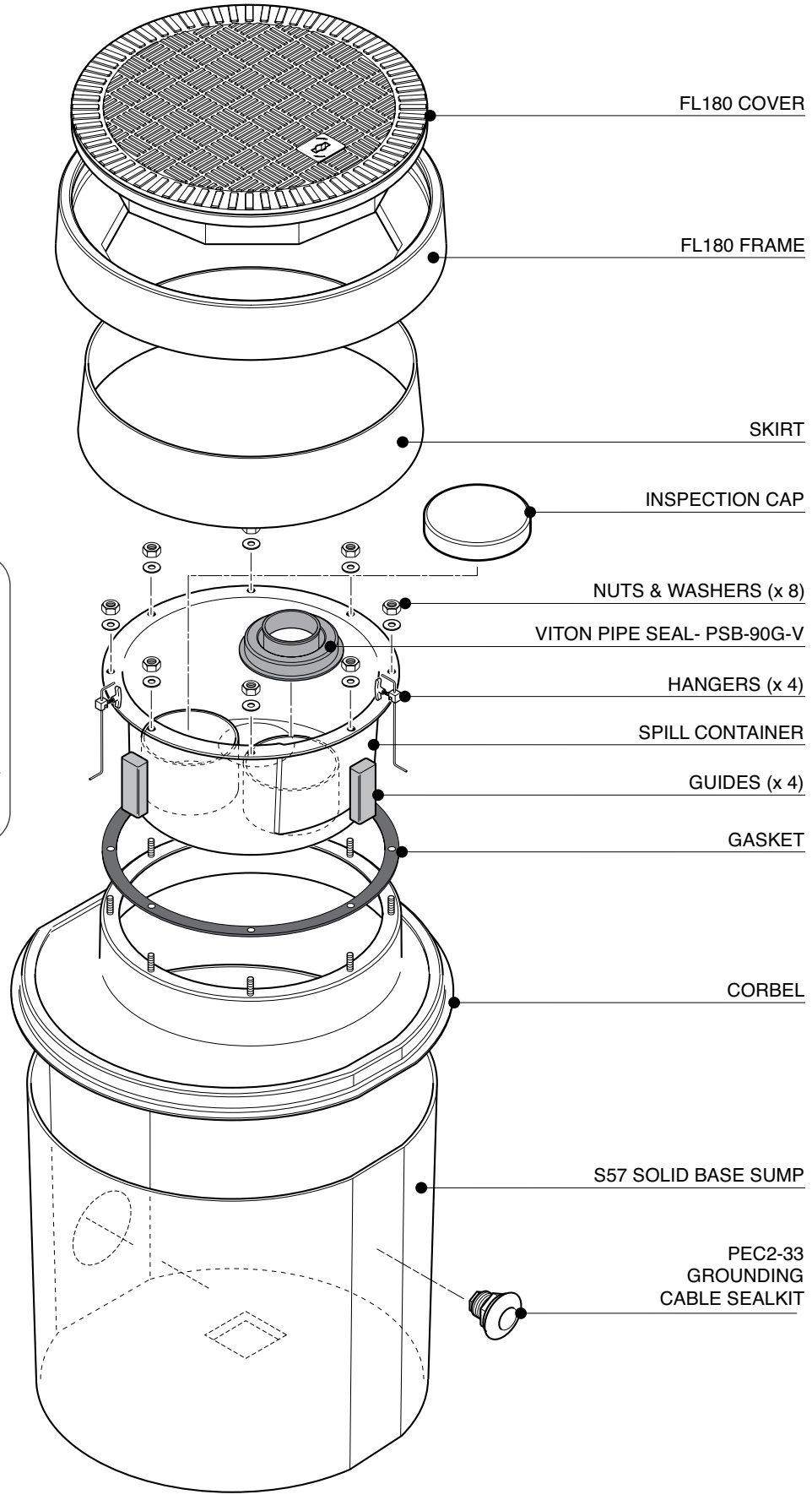


Secondary contained remote fill sump. 23" dia. x 25" deep solid base sump with a sealed secondary spill container and integrated drainback system. 18" dia flat sealed cover and frame. Includes PSB-90-PS 3 9/16" dia. spill tray fill riser sealkit and grounding cable sealkit.

For reference purposes only. This drawing is not a specification. Order against product code only. To enable continuous improvement of our products, the designs and specifications are subject to change without notice.

FIBRELITE 
PART OF OPW A DOVER COMPANY



FL180 COVER

FL180 FRAME

SKIRT

INSPECTION CAP

NUTS & WASHERS (x 8)

VITON PIPE SEAL- PSB-90G-V

HANGERS (x 4)

SPILL CONTAINER

GUIDES (x 4)

GASKET

CORBEL

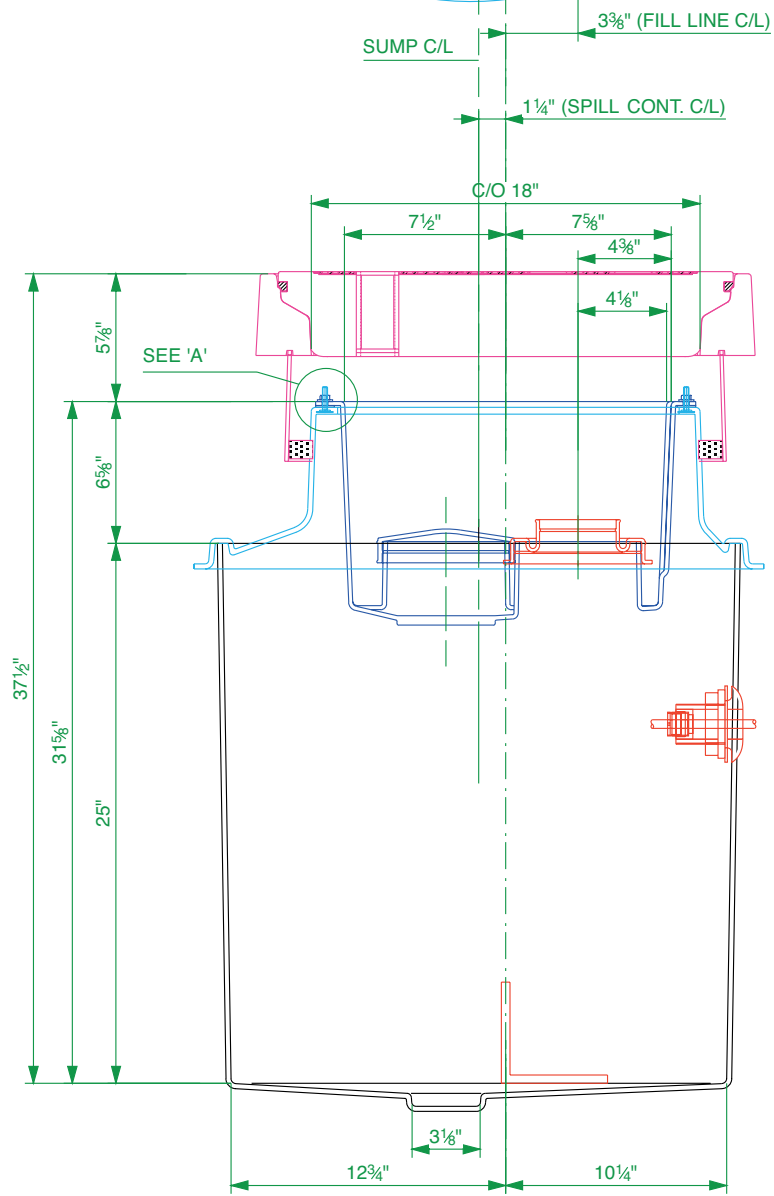
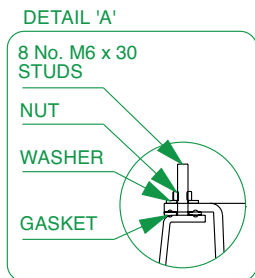
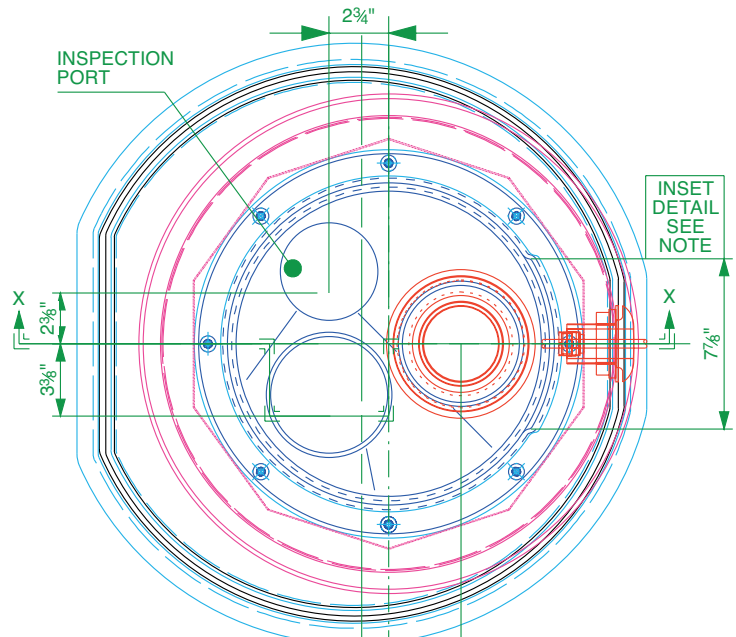
S57 SOLID BASE SUMP

PEC2-33
GROUNDING
CABLE SEALKIT

Secondary contained remote fill sump. 23" dia. x 25" deep solid base sump with a sealed secondary spill container and integrated drainback system. 18" dia flat sealed cover and frame. Includes PSB-90-PS 3 9/16" dia. spill tray fill riser sealkit and grounding cable sealkit.

For reference purposes only. This drawing is not a specification. Order against product code only. To enable continuous improvement of our products, the designs and specifications are subject to change without notice.





Spill Containment Capacity = 5.8 US Gal.

SECTION X - X

Secondary contained remote fill sump. 23" dia. x 25" deep solid base sump with a sealed secondary spill container and integrated drainback system. 18" dia flat sealed cover and frame. Includes PSB-90-PS 3 9/16" dia. spill tray fill riser sealkit and grounding cable sealkit.

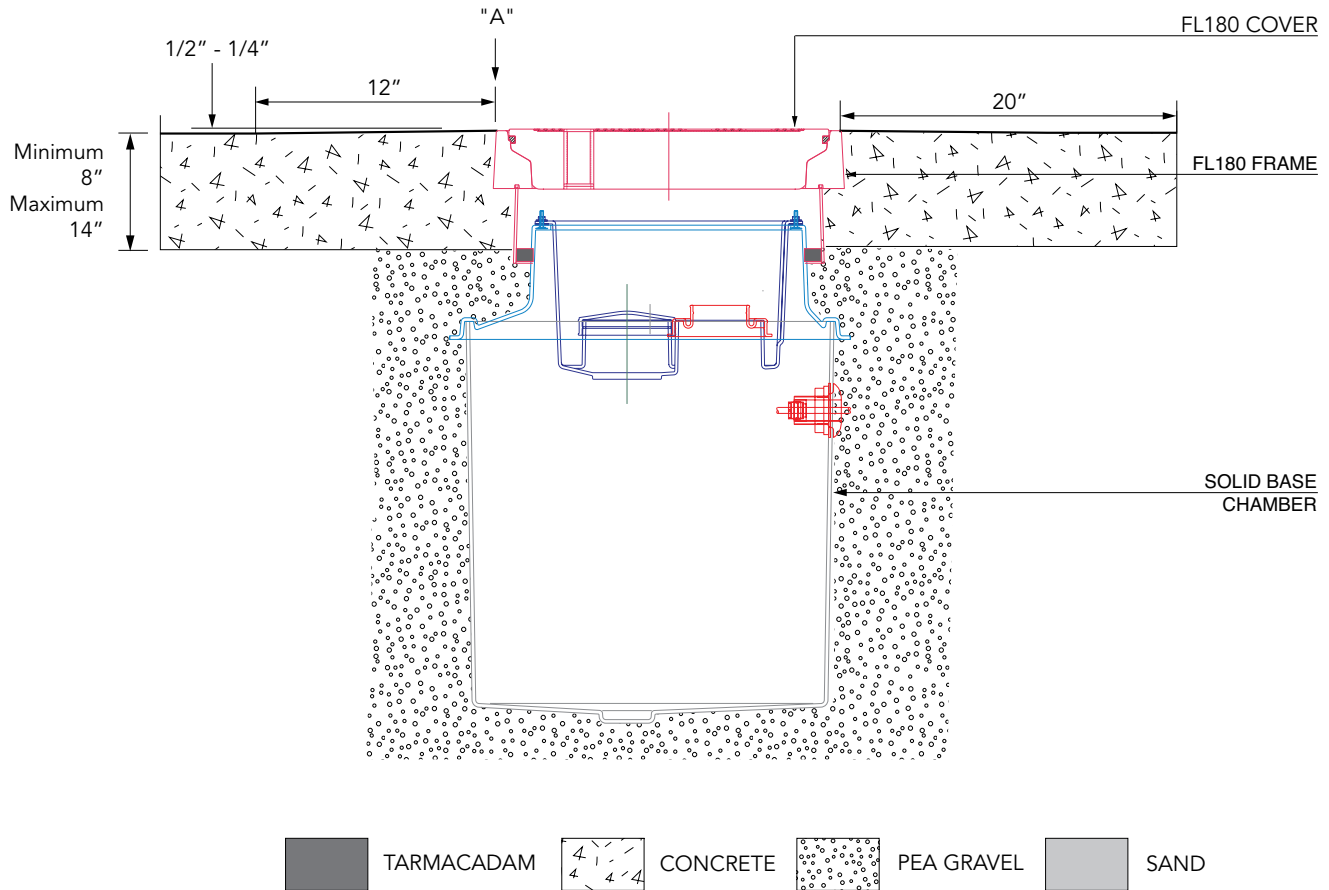
For reference purposes only. This drawing is not a specification. Order against product code only. To enable continuous improvement of our products, the designs and specifications are subject to change without notice.



VERY IMPORTANT
 OUTER EDGE "A" OF FRAME SET 1/2" - 1/4"
 ABOVE GENERAL FORECOURT AREA WITH
 CONCRETE RAMPED AWAY OVER 12".

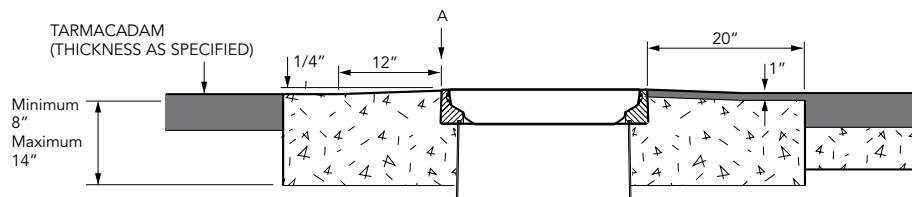
TYPICAL INSTALLATION

CONCRETE

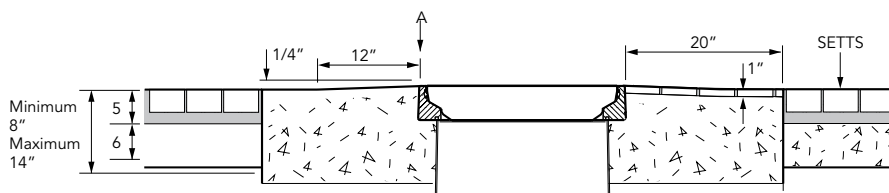


ALTERNATIVE INSTALLATION ADVICE

TARMACADAM



SETTS



Secondary contained remote fill sump. 23" dia. x 25" deep solid base sump with a sealed secondary spill container and integrated drainback system. 18" dia flat sealed cover and frame. Includes PSB-90-PS 3 9/16" dia. spill tray fill riser sealkit and grounding cable sealkit.

For reference purposes only. This drawing is not a specification. Order against product code only. To enable continuous improvement of our products, the designs and specifications are subject to change without notice.

