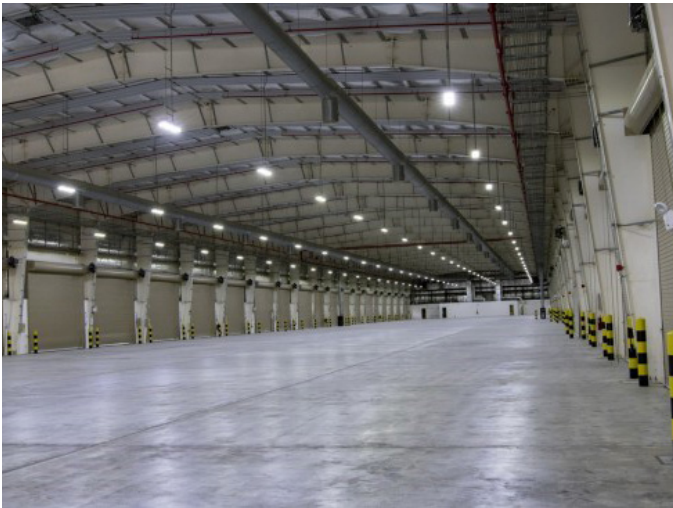


Support Facility, Bahrain

Fibrelite Supply Strong And Lightweight GRP Trench Covers To Bahrain Support Facility

FIBRELITE 



Fibrelite trench covers were specified for support site in Bahrain



Uneven trench recess depth

Project Overview

This client required trench access covers for two service ducts within their workshop. The previously installed steel covers had permanently deformed under heavy operational loads and sat in an uneven recess, resulting in the covers being unstable. A solution was required to support loads of up to 30 tonnes while being able to be safely and quickly removed by operatives to provide access to the duct for routine maintenance.



Previously installed steel covers



An uneven recess had destabilised previously installed covers

Problem

The challenge with this installation was twofold. Firstly, to maintain a low weight, the previously installed steel covers lacked the necessary reinforcement to resist the operational loads. This resulted in excessive deformation and failure. Secondly, the existing trench recess had an uneven depth resulting in excessive rocking of the covers.



The steel covers had buckled under the load



Previously installed covers had also begun to corrode

Solution

The specifying engineer found Fibrelite via an online search and provided a detailed brief of the project and design parameters.

Using these, Fibrelite provided a retrofit solution, custom engineering and manufacturing their GRP trench access covers to suit the client's requirements. The Fibrelite trench covers that were installed have a load rating of 30 tonnes (Fibrelite covers are available with load ratings up to 90 tonnes) and the GRP covers are corrosion resistant therefore will have a longer lifetime than the previously installed metal covers.

A custom aluminium frame was installed to improve the stability of the covers, providing an even surface on which to place the new trench covers. Fibrelite's trench access covers can be removed safely and easily by two people using their ergonomic FL7 lifting handles.



Fibrelite's trench access covers will not deform under heavy loads



A custom aluminium frame provides a stable base for the covers

Results

Covers were manufactured and delivered to the local contractor within the tight construction schedule specified, resulting in a maintenance-free (fit-and-forget) access solution, easily and safely removable by two people.

For more information on Fibrelite's product range please contact us:

UK Office:

Tel: +44 (0) 1756 799 773

Email: enquiries@fibrelite.com

US Office:

Tel: +1 919 209 2404

Email: enquiries@fibrelite.com

Malaysia Office (Asia Pacific):

Tel: + 44 (0) 1756 799 773

Email: enquiries@fibrelite.com