

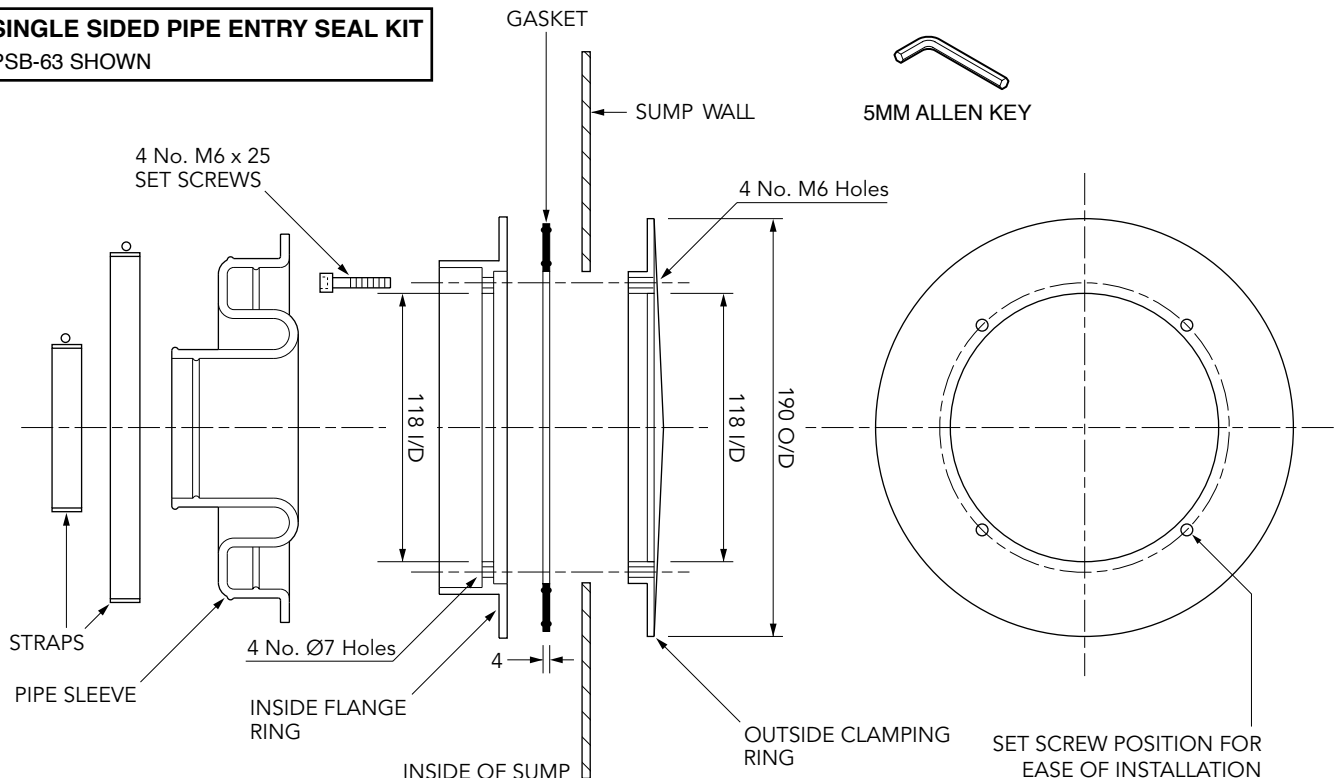
# INSTALLATION INSTRUCTIONS

Pipe Entry Seal Kits - Generic

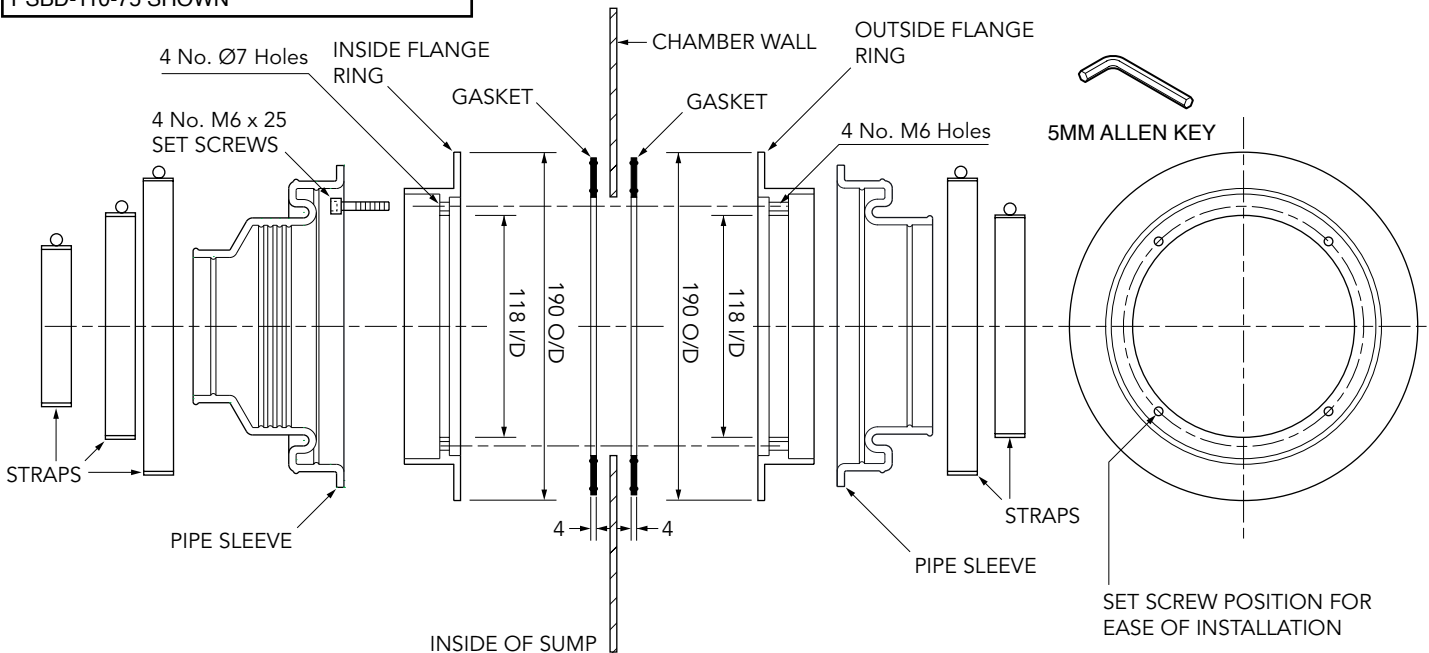
# FIBRELITE

PART OF OPW a DOVER company

## SINGLE SIDED PIPE ENTRY SEAL KIT PSB-63 SHOWN



## DOUBLE SIDED PIPE ENTRY SEAL KIT PSBD-110-75 SHOWN



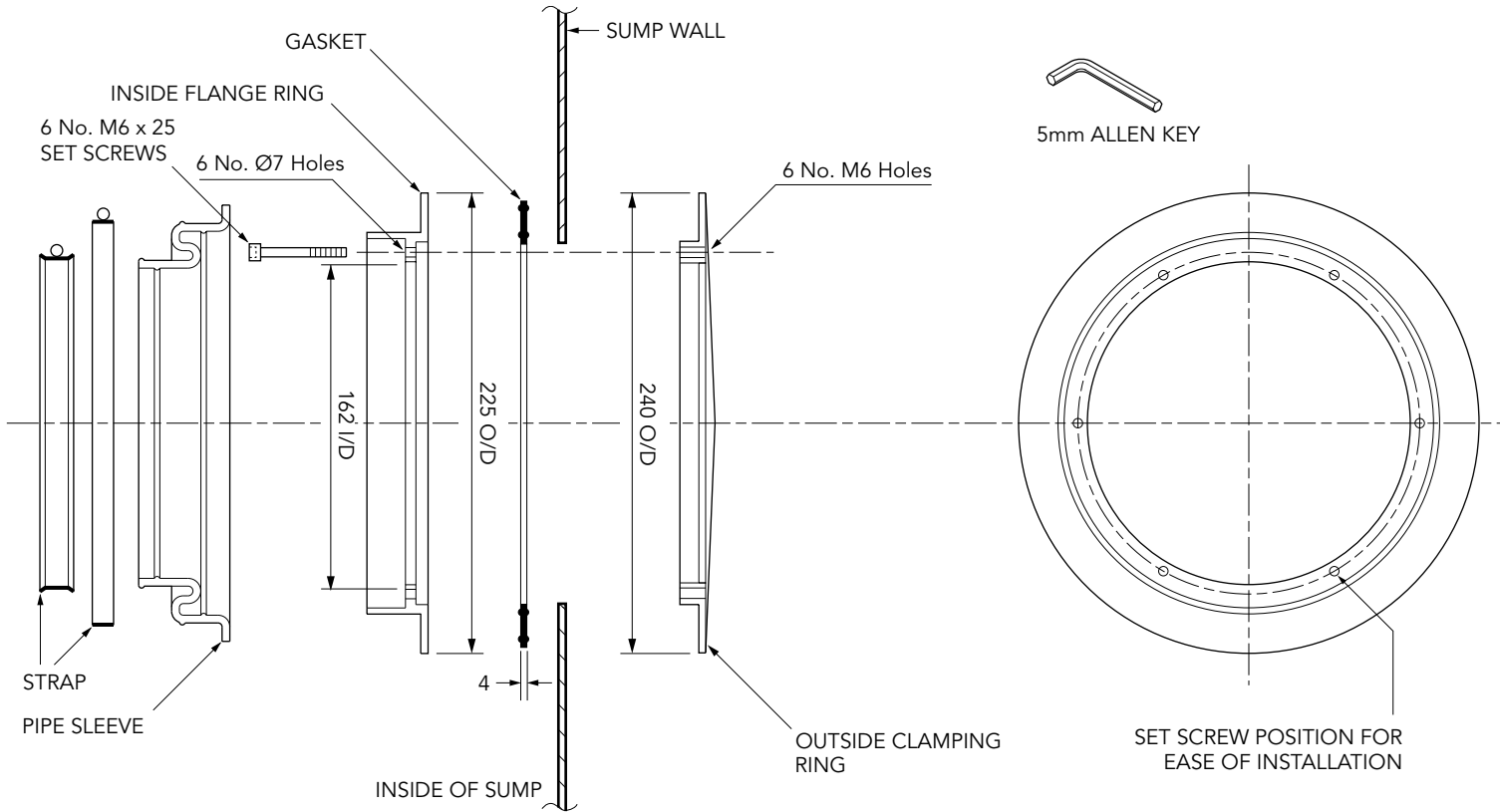
Pipe Seal Type	Methodology	Hole Size Required
PSB-50, PSB-63, PSB-75, PSB-90, PSB-110 PSBD-63, PSBD-75, PSBD-110-75	Bimetal Hole Saw & Arbor, 5mm Allen Key	Ø150 mm
PSB-125, PSB-160, PSB-168 PSBD-125, PSBD-160, PSBD-168	Jigsaw with Tungsten Carbide Tipped Blades OR Bimetal Hole Saw & Arbor, 5mm Allen Key	Ø190 mm

# INSTALLATION INSTRUCTIONS

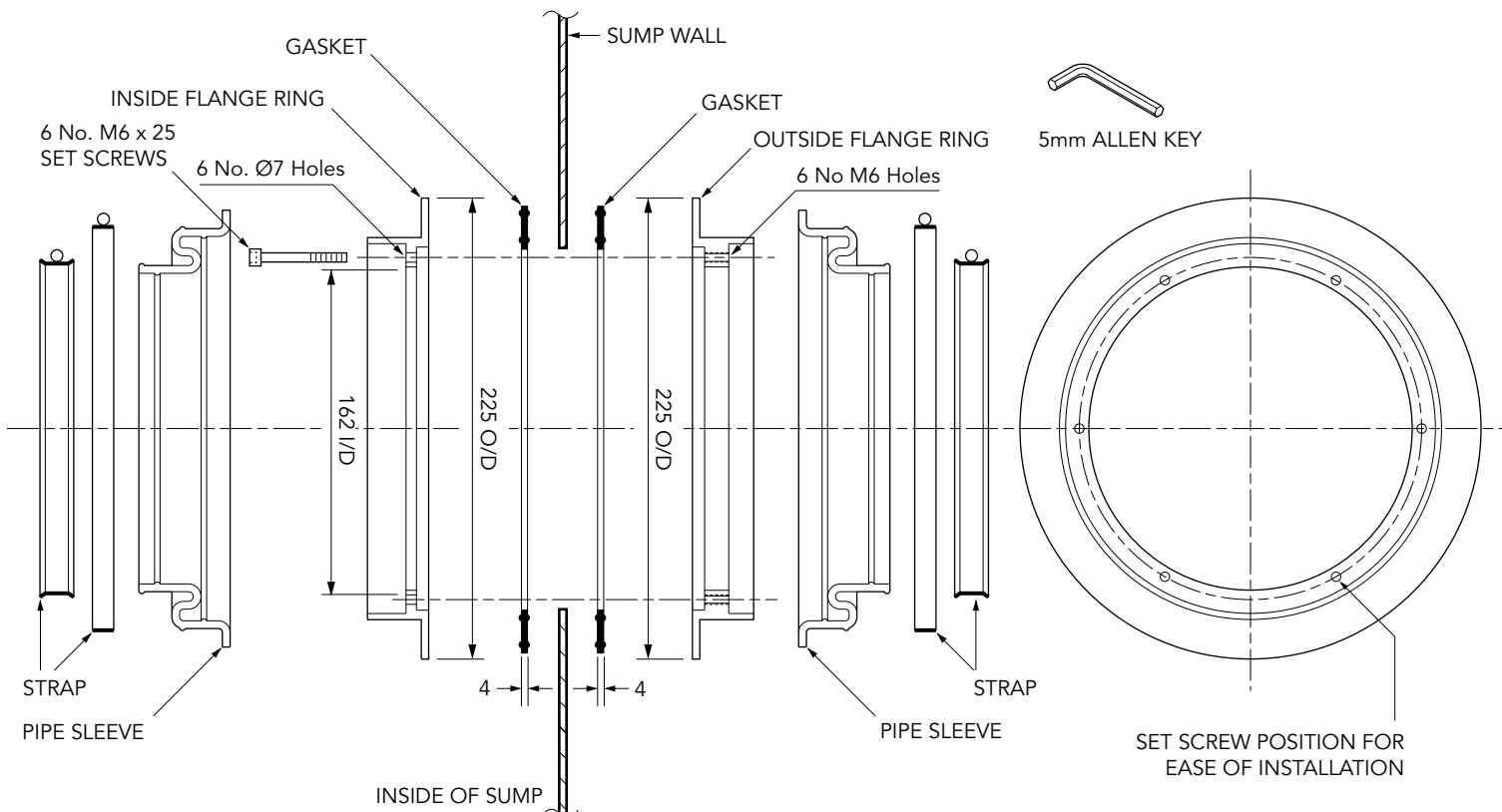
Pipe Entry Seal Kits - Generic



## SINGLE SIDED PIPE ENTRY SEAL KIT PSB-160 SHOWN



## DOUBLE SIDED PIPE ENTRY SEAL KIT PSBD-160 SHOWN

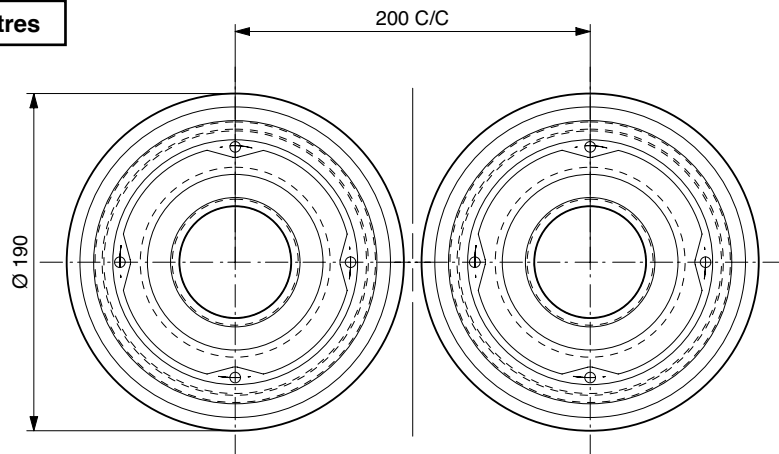


# INSTALLATION INSTRUCTIONS

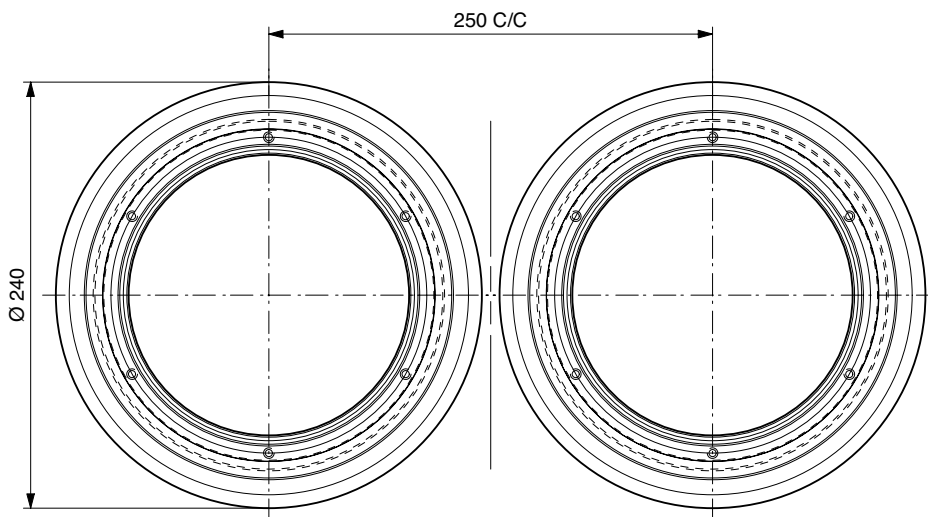
## Pipe Entry Seal Kits - Generic

### Pipe Seal Kits - Cross Centres

PSB-50 to PSB-110  
PSBD-50 to PSBD-110

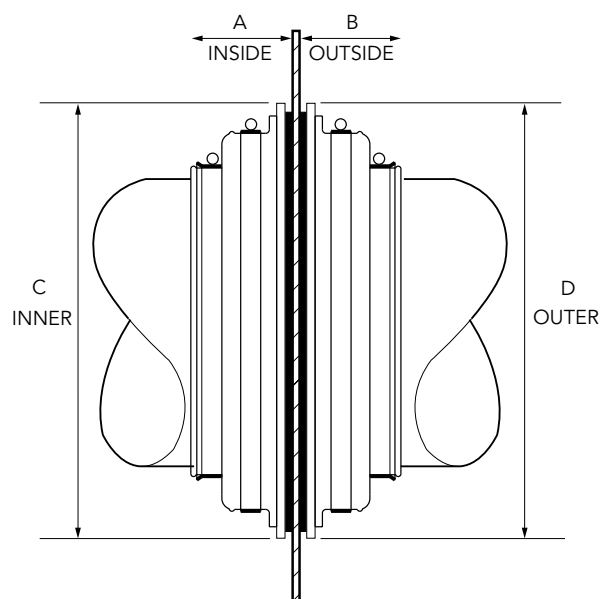


PSB-125 to PSB-168  
PSBD-125 to PSBD-168



### Pipe Seal Kits - Dimensions

PIPEKIT (SINGLE)	PIPE O/D CLAMPING RANGE (mm)	PIPEKIT DEPTH (mm)		FLANGE RING DIA. (mm)	
		DIM 'A'	DIM 'B'	DIM 'C'	DIM 'D'
PSB-50	45-53	56	-	190	190
PSB-63	57-66	63	-	190	190
PSB-75	68-79	54	-	190	190
PSB-90	81-95	62	-	190	190
PSB-110	99-115	62	-	190	190
PSB-125	112-131	54	-	225	240
PSB-160	153-162	57	-	225	240
PSB-168	161-169	57	-	225	240
PIPEKIT (DOUBLE)					
PSBD-63	57-66	63	63	190	190
PSBD-75	68-79	54	54	190	190
PSBD-110-75-110	99-115	91	62	190	190
PSBD-125	112-131	74	74	225	225
PSBD-160	153-162	57	57	225	225
PSBD-168	161-169	57	57	225	225



**N.B.**

The exit position of the pipework through the chamber wall must be as close as possible to 90°. The pipe kit should be fitted so that the pipework is centrally positioned to the seal. When backfilling ensure that the pipework is not disturbed from this central position.