

Premier Multi-Event Stadium, UK

Fibrelite Provide Lightweight Retrofit Trench Covering Solution For Premier Multi-Event Stadium



Bespoke Fibrelite GRP trench covers installed over electrical cabling trenches

Project Overview

Years in the making, this was one of Fibrelite's most complex projects yet. Hundreds of metres of custom trench access covers were custom engineered, and replaced failing covers around this prestigious stadium.



Existing covers had no tread pattern, potentially causing their surface to become slippery when wet



Previously installed covers were poorly fitting in their frames due to the covers being distorted.



Previously installed covers were unable to withstand heavy loads causing them to crack and deform

Problem

The previously installed trench access covers were worn, outdated and unfit for purpose. The primary issues were:

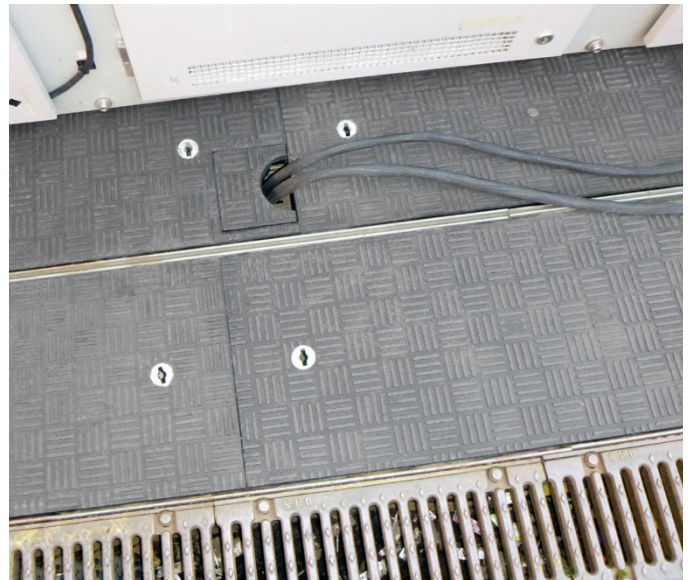
- They were unable to withstand heavy loads which had caused them to crack and deform
- They posed potential safety issues to pedestrian and service vehicular traffic due to the covers being distorted
- Covers had no surface tread pattern, potentially causing their surfaces to become slippery when wet
- The existing covers had to be repeatedly cut and replaced to accommodate cable runs for a variety of staged events



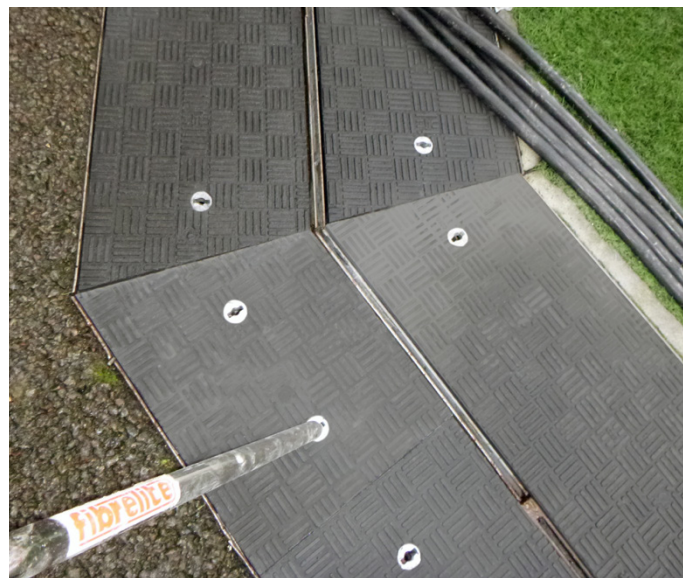
Fibrelite covers have an anti-skid surface, effective when wet or dry



Lightweight Fibrelite covers allow easy, safe removal by 2 people



Fibrelite provided a retrofit solution which could be installed directly into the existing framework and provide the necessary interchangeable cable outlet arrangement without having to modify the Fibrelite covers



All Fibrelite trench covers can be safely removed manually by 2 people using the FL7 lifting handles

Solution

Fibrelite custom designed, engineered and supplied retrofit trench access covers for the stadium, which could be installed directly into existing framework, minimising disruption. Fibrelite's technical team worked closely with the stadium's technical team to provide the best possible solution for both their immediate and long-term requirements, which, included an industry recognised fire rating.

Key features of the Fibrelite covers used in this project:

- Custom manufactured to fit existing 38mm deep frames
- C250 (BS EN124) load rated
- Bespoke cable ports which can be easily removed and replaced by hand. These also accommodate electrical cabling which exits from the trench to above ground networks
- Lightweight, allowing easy and safe removal by 2 people using Fibrelite's FL7 lifting handles
- A 'fit and forget' solution: corrosion-resistant, unaffected by water, underground gasses and most chemicals
- Fire resistance to BS 476-7, class 0 of the Fire Safety Building Regulations 2000
- Anti-slip/skid surface provides skid resistance in both wet and dry conditions that exceed the requirements of:
 - UK Slip Resistance Guidelines: issue 4:2011
 - EN124:1994/PAS26: 1998
 - HAA104\09: 2009
- Aesthetically pleasing



Fibrelite covers are chemically inert so will not corrode over time



Fibrelite covers provide a superior anti-slip surface in both wet or dry conditions

Results

This stadium now has a safe, lightweight long-term trench access solution which will last for years with minimal maintenance.

For more information on Fibrelite's product range please contact us:

UK Office:

Tel: +44 (0) 1756 799 773

Email: enquiries@fibrelite.com

US Office:

Tel: +1 919 209 2404

Email: enquiries@fibrelite.com

Malaysia Office (Asia Pacific):

Tel: + 44 (0) 1756 799 773

Email: enquiries@fibrelite.com



All Fibrelite trench covers can be safely and quickly removed by two people using the FL7 lifting handles (image used for illustration purposes and shows a different installation)